

LETTER OF AGREEMENT

between

London ACC (EGTT)
London TCC (EGTL)
Scottish ACC (EGPX)

Amsterdam FIR (EHAA)

and

IVAO XU Division

IVAO Netherlands

Effective: 25 March 2021

The purpose of this Letter of Agreement is to define the hand-over procedures between Amsterdam ACC and London ACC, London TCC and Scottish ACC of flights conducted along airways or entering controlled airspace across the respective sector boundaries.

1. General Procedures

Traffic shall be handed over with a minimum horizontal separation of 10 NM between aircraft, maintaining this distance or increasing (if necessary on parallel headings or by using speed control) or 1000 feet vertical separation (between RVSM approved aircraft and aircraft below FL290) and 2000 feet in other cases.

All aircraft entering EGTT, EGTL and EGPX airspace shall be assigned a discrete squawk for identification purposes (see section 4.1).

Unless coordinated via IVAN Chat or Aurora Intercom or released as specified in this LoA, the receiving ATC Unit shall not give aircraft a clearance or instruction to climb or descend until it has passed the Transfer of Control Point. Transferred aircraft are released for turns with a maximum of 45 degrees.

Unless indicated otherwise, the Transfer of Control Point is always the FIR boundary. The transfer of communications (frequency change to the next ATC Unit) shall be completed before passing the Transfer of Control Point.

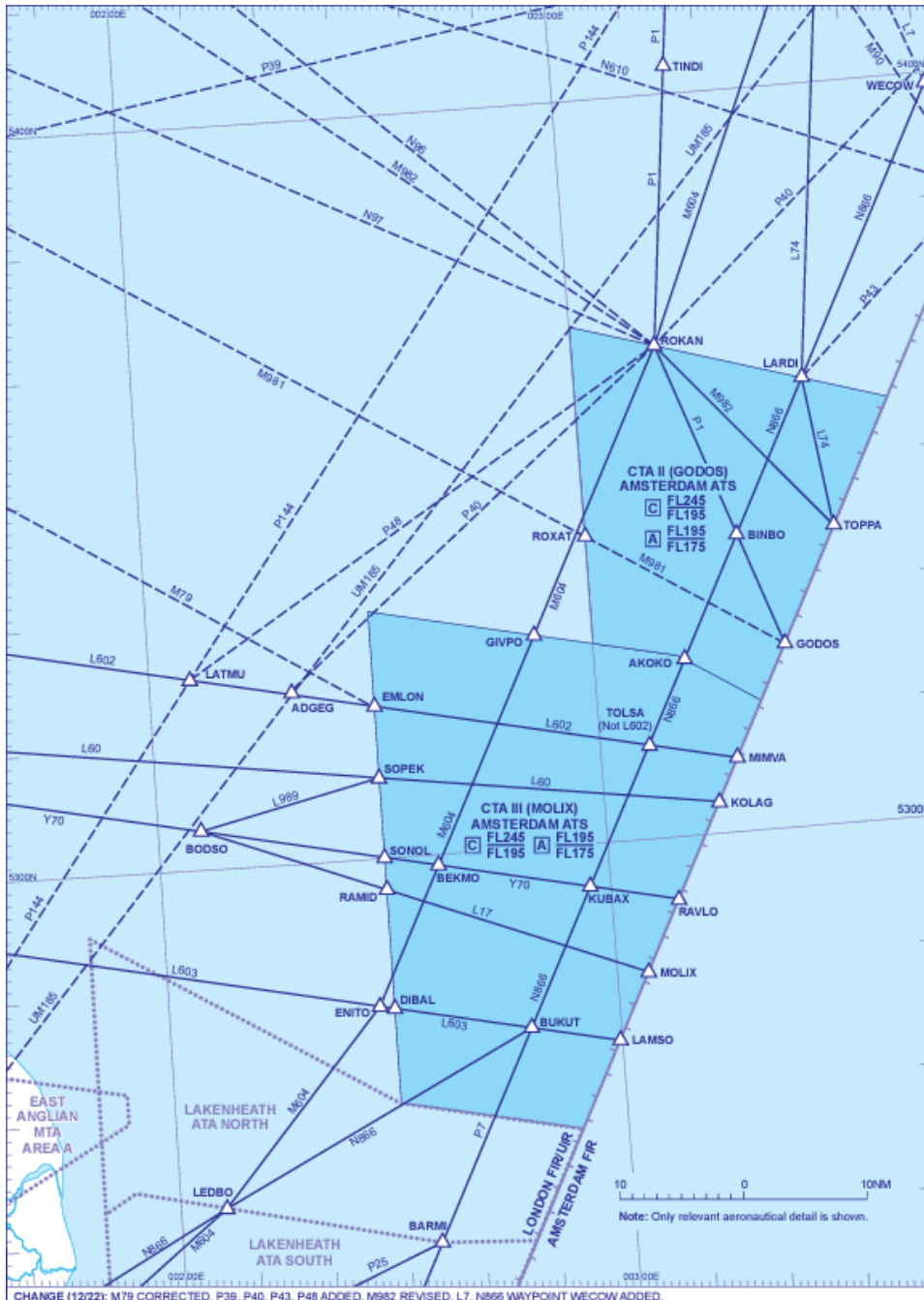
Cruising levels for flights crossing the FIR boundary shall be assigned to traffic according to the procedures specified in the AIP of the country in question, For cruising traffic the semi-circular airspace rules apply (Eastbound-Odd levels, Westbound-Even levels). Traffic in climb or descend shall be transferred clear of other traffic.

In the Amsterdam UTA, Maastricht Radar (EDYY) is responsible for the airspace above FL245. In case EDYY is not online, EHAA will take over its responsibilities above FL245 as per paragraph 4 of this document. Reference the EDYY LoA's for further details.

2. Areas for Cross Border Provision of ATS

2.1 Airspace delegated from EGTT/EGTL/EGPX to EHAA

2.1.1 GODOS and MOLIX Areas

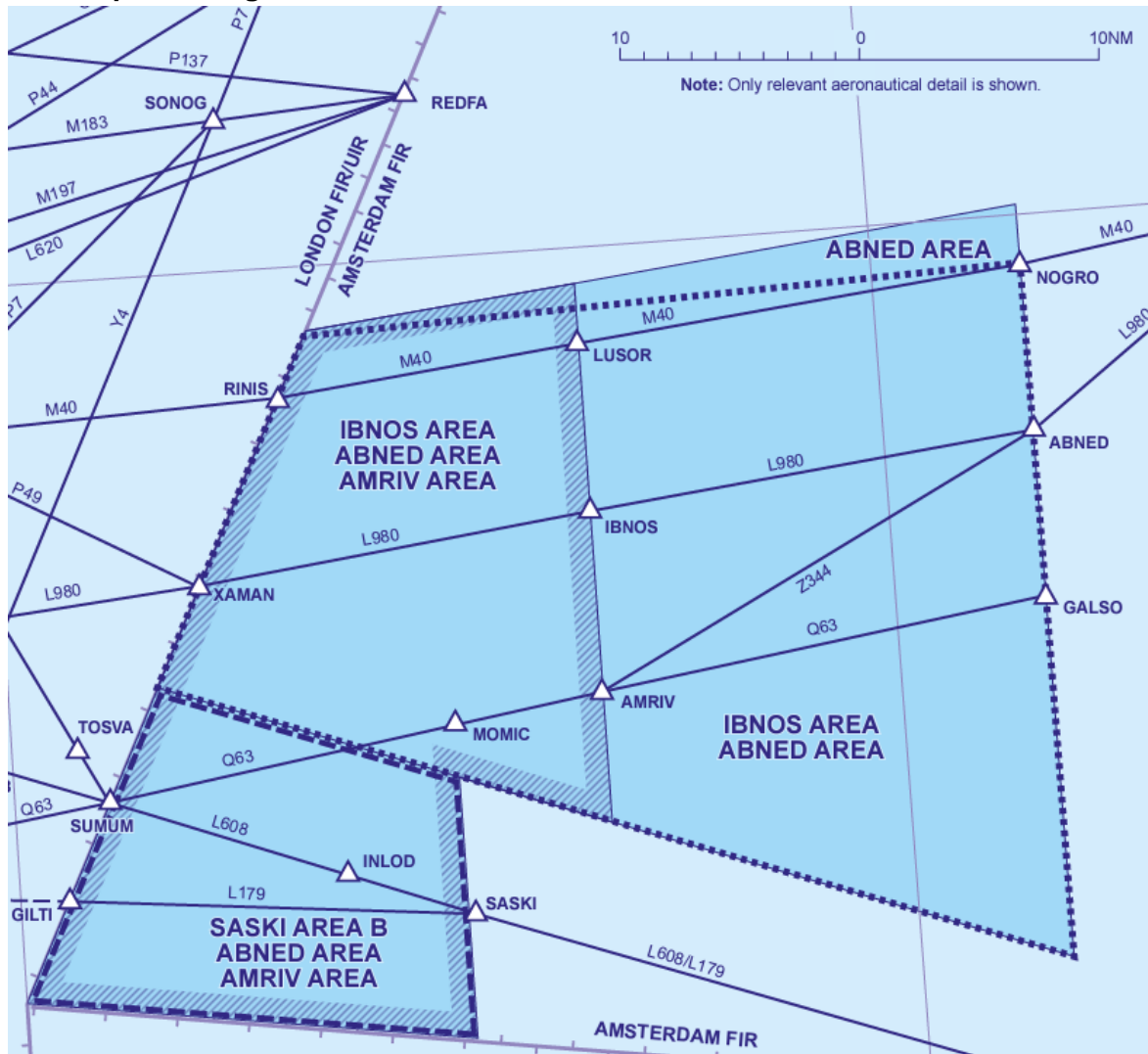


FL 195 - FL 245 — Class C Airspace.

FL 175 - FL 195 — Class A Airspace.

In these parts of the London/Scottish FIR Amsterdam ACC will provide Air Traffic Services to all aircraft between FL 175 and FL 245 (inclusive) operating on ATS routes L17, L60, L74, L602, L603, M604, M981, M982, N866, P1, Y70. Procedures and communications will be as if this airspace was an integral part of the Amsterdam FIR.

2.2 Airspace delegated from EHAA to EGTT/EGTL/EGPX



2.2.1 IBNOS and ABNED Areas

FL 215 - FL 660 — Class C Airspace

In these parts of the Amsterdam FIR London ACC will provide Air Traffic Services to all aircraft between FL 245 and FL 660. Procedures and communications will be as if this airspace was an integral part of the London FIR/UIR

2.2.2 AMRIV Area

FL 195 - FL 215 — Class C Airspace

FL 55 - FL 195 — Class A Airspace

In these parts of the Amsterdam FIR London TCC will provide Air Traffic Services to all aircraft between FL 55 and FL 215). Procedures and communications will be as if this airspace was an integral part of the London FIR/UIR.

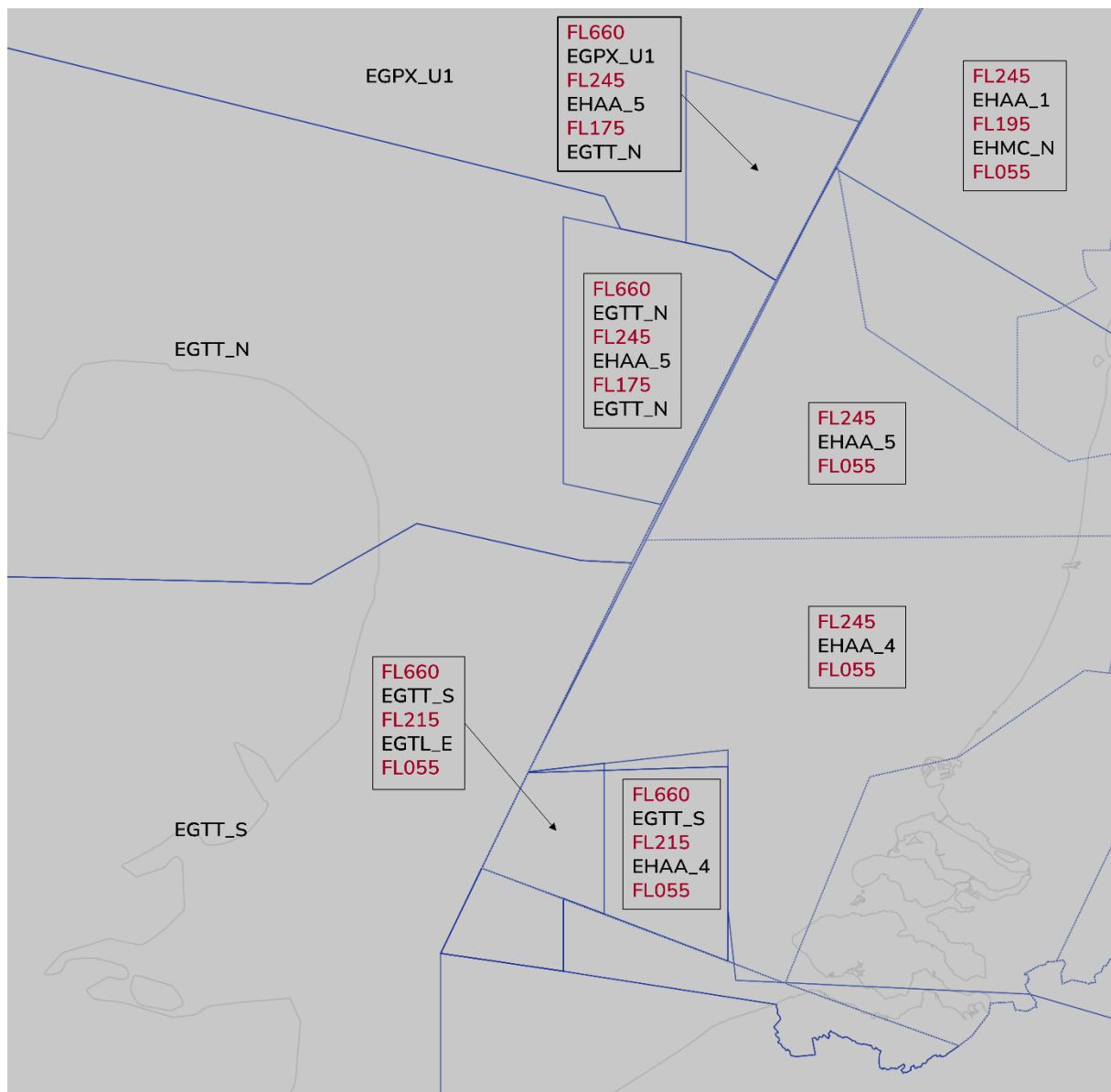
2.2.3 SASKI Area B

FL 245 - FL 660 — Class C Airspace

In these parts of the Amsterdam FIR London ACC will provide Air Traffic Services to all aircraft between FL 245 and FL 660. Procedures and communications will be as if this airspace was an integral part of the London FIR/UIR.

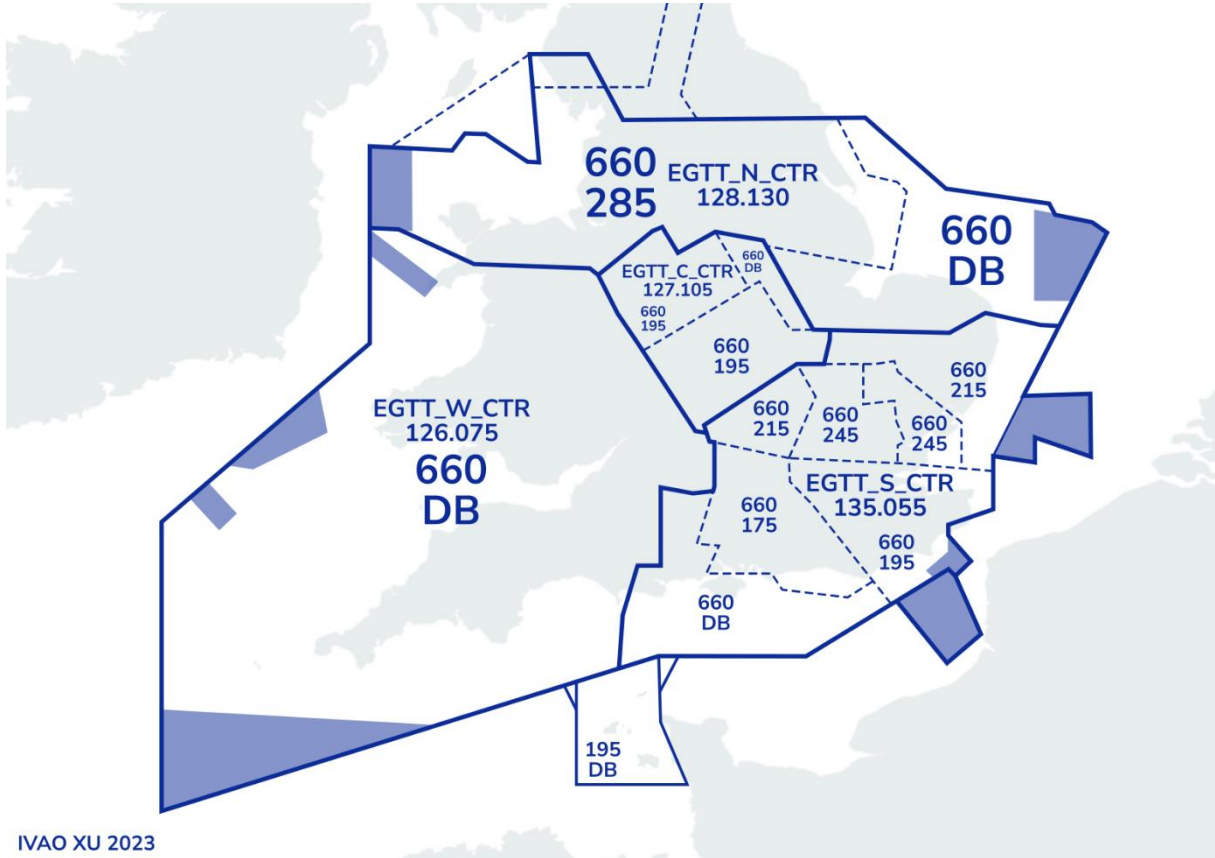
3. Sectorisation

3.1 Sectorisation Amsterdam ACC



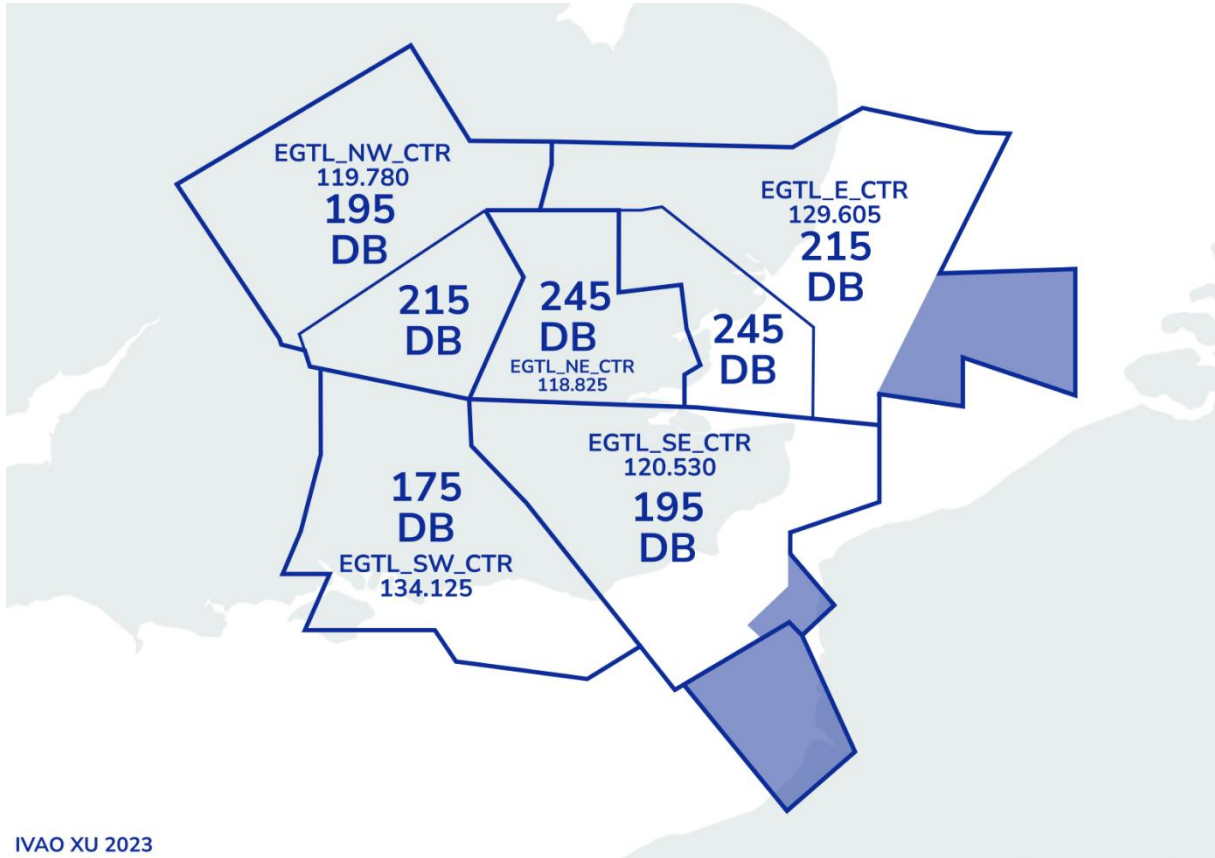
Id	RF Callsign	Logon Code	Frequency
ALL	Amsterdam Radar	EHA_CTR	125.750
Sector 4	Amsterdam Radar	EHA_4_CTR	136.650
Sector 5	Amsterdam Radar	EHA_5_CTR	119.175

3.2 Sectorisation of London ACC



Id	RF Callsign	Logon Code	Frequency
LAC-ALL	London Control	EGTT_CTR	132.605
LAC North	London Control	EGTT_N_CTR	128.130
LAC West	London Control	EGTT_W_CTR	126.075
LAC South	London Control	EGTT_S_CTR	135.055
LAC Center	London Control	EGTT_C_CTR	127.105

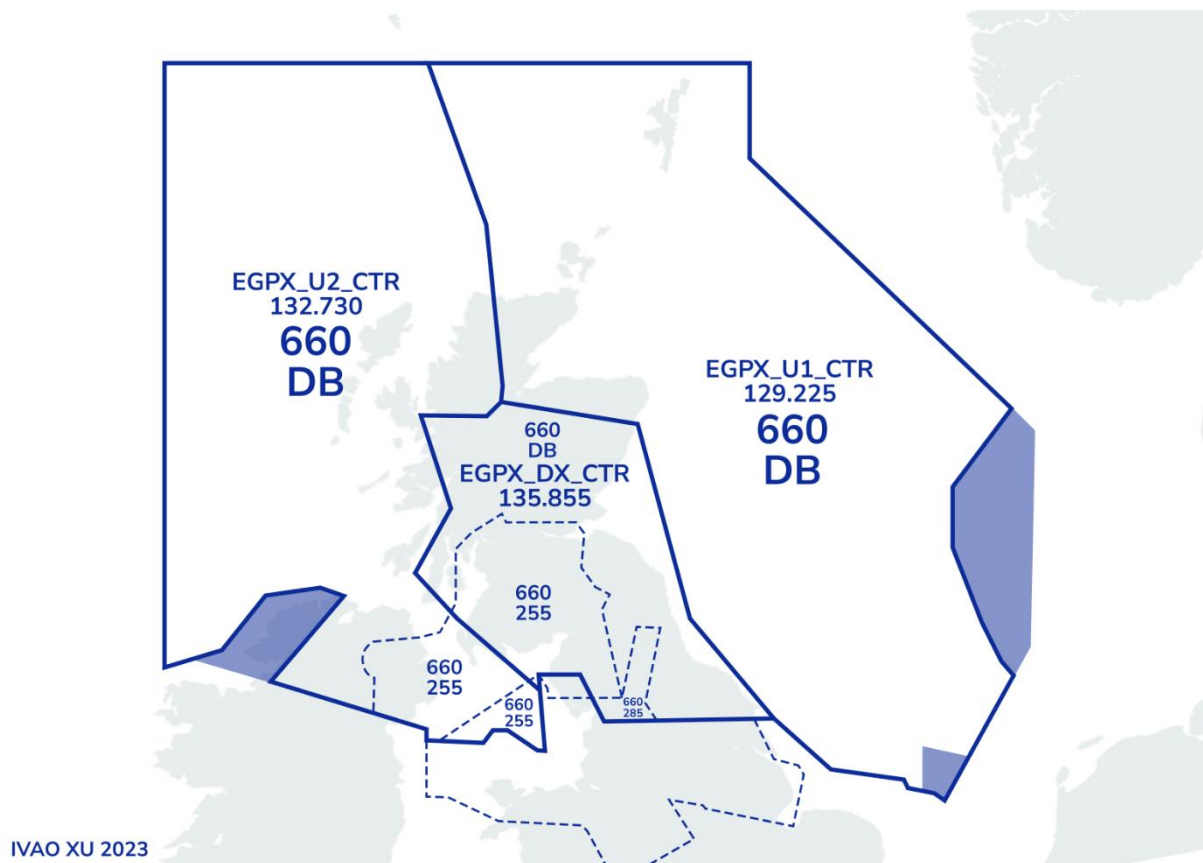
3.3 Sectorisation of London TCC



IVAO XU 2023

ID	RTF Callsign	Logon Code	Frequency
LTC-ALL	London Control	EGTL_CTR	124.930
London Terminal Control	London Control	EGTL_NE_CTR	118.825
London Terminal Control	London Control	EGTL_NW_CTR	119.780
London Terminal Control	London Control	EGTL_SE_CTR	120.530
London Terminal Control	London Control	EGTL_SW_CTR	134.125
London Terminal Control	London Control	EGTL_E_CTR	129.605

3.4 Sectorisation of Scottish ACC



ID	RTF Callsign	Logon Code	Frequency
SAC-ALL	Scottish Control	EGPX_CTR	124.500
Scottish U1	Scottish Control	EGPX_U1_CTR	129.225
Scottish U2	Scottish Control	EGPX_U2_CTR	132.730
Scottish DX	Scottish Control	EGPX_DX_CTR	132.855

4. Transfer of Control and Transfer of Communications

4.1 Transfer of Control

The transfer of control takes place at the AoR boundary, unless otherwise specified in paragraph 5.

All traffic entering EGTT, EGTL and EGPX airspace shall be assigned a discrete squawk code before transfer of control takes place. The squawk code 1000 should NOT be used for this traffic.

4.2 Transfer of communications

The transfer of communications shall take place not later than the transfer of control, unless otherwise coordinated.

4.2.1 Transfer of communications to Amsterdam ACC

Sector	Logon Code	Channel	Callsign
EHAA_4	EHAA_4_CTR	136.650	Amsterdam Radar
	EHAA_SW_CTR	123.850	Amsterdam Radar
	EHAA_CTR	125.750	Amsterdam Radar
EHAA_5	EHAA_5_CTR	119.175	Amsterdam Radar
	EHAA_SW_CTR	123.850	Amsterdam Radar
	EHAA_CTR	125.750	Amsterdam Radar
MDJ	EDYY_DJH_CTR	129.735	Maastricht Radar
	EDYY_DEC_CTR	135.510	Maastricht Radar
	EDYY_CTR	133.215	Maastricht Radar
	EHAA_NE_CTR	124.880	Amsterdam Radar
	EHAA_CTR	125.750	Amsterdam Radar
MDD	EDYY_DD_CTR	132.085	Maastricht Radar
	EDYY_DEC_CTR	135.510	Maastricht Radar
	EDYY_CTR	133.215	Maastricht Radar
	EHAA_SW_CTR	123.850	Amsterdam Radar
	EHAA_CTR	125.750	Amsterdam Radar

4.2.2 Transfer of communications to London ACC

Sector	Logon Code	Channel	Callsign
EGTT_N	EGTT_N_CTR	128.130	London Control
	EGTT_CTR	132.605	London Control
EGTT_S	EGTT_S_CTR	135.055	London Control
	EGTT_CTR	132.605	London Control

4.2.3 Transfer of communications to London TCC

Sector	Logon Code	Channel	Callsign
EGTL_E	EGTL_E_CTR	129.605	London Control
	EGTL_CTR	124.930	London Control

4.2.4 Transfer of communications to Scottish ACC

Sector	Logon Code	Channel	Callsign
EGPX_U1	EGPX_U1_CTR	129.225	Scottish Control
	EGPX_CTR	124.500	Scottish Control

5. Procedures

5.1 Flights from Amsterdam ACC to London ACC/TCC and Scottish ACC

5.1.1 Destination in London FIR.

From	To	Routing	COP	FLA	Special conditions	Receiving sector
EHAM, EHLE	EGSS, GW, SC and SH	M40	LUSOR	FL240 (or RFL, if lower.)	Note 1	<FL215 EGTL_E
	EGLC and EGMC	L980	IBNOS		Note 2	>FL215 EGTT_S
	Other					
	EGKK	Z344	AMRIV		Note 1	
	Other	L60	KOLAG			
L602		MIMVA				
EHRD, EHEH	EGSS, GW, SC and SH	L980	IBNOS	Note 1	<FL215 EGTL_E	
	EGLC, EGMC			Note 2	>FL215 EGTT_S	
	EGKK	Z344	AMRIV	Note 1		
Other	EGSS, GW, SC, SH, TC, UL, UN and YM	M40 / DCT	NOGRO	FL280 or FL270		EGTT_S
	EGKB, LC, MC, MD, TO and KK	DCT	GALSO	FL260		
	EGKK			FL290	Note 3	
	Other EGXX		NOGRO ABNED GALSO	FL290 to FL390	Note 4	

Note 1: Maximum RFL is FL240

Note 2: Maximum RFL is FL200

Note 3: If FL290 is not available, traffic to EGKK may be transferred at FL280, without coordination.

Note 4: Traffic inbound to any EGxx airfield except those mentioned above may be transferred at any level between FL290 and FL390, inclusive, without coordination.

5.1.2 Other destinations (EGTT)

From	To	Routing	COP	FLA	Receiving sector
Other	Other	L602 / DCT	MIMVA	Even	EGTT_N
		L60 / DCT	KOLAG		
		DCT	RAVLO		
		DCT	SOMVA		EGTT_S
		M40 / DCT	NOGRO		
		L980 / DCT	ABNED		
		DCT	GALSO		

5.1.3 Other destinations (EGPX)

From	To	Routing	COP	FLA	Special Conditions	Receiving Sector
Other	Other	P1 / DCT	GODOS	Even		EGPX_U1
EHAM, RD, LE		M90 / DCT	LONAM	FL300	Note 1	

Note 1: Amsterdam Group departures via LONAM will be transferred in the climb to FL300. This traffic is released for climb to FL330 and released for turns, subject to known traffic

5.2 Flights from London ACC/TCC and Scottish ACC to Amsterdam ACC

5.2.1 Destinations in Amsterdam FIR (from EGTT/EGTL)

From	To	Routing	COP	FLA	Receiving Sector
EGSS, GW, SC and SH	EHAM	L620, M183, M197, P137	REDFA	FL210	EHAA_4
Other	EHAM			FL220, FL230 or FL240	
	EHBD, EH, GR, MZ, RD, SE, VK and WO			FL190	
	Other			FL230	
		L603	DIBAL	FL250	EHAA_5
		L17	RAMID	FL230	

5.2.2 Destinations in Amsterdam FIR (from EGPX)

From	To	Routing	COP	FL	Receiving Sector
Other	EHxx	L74	LARDI	FL250	EHAA_5
		N96, N97, M982	ROKAN		

5.2.3 Other destinations (from EGTT)

From	To	Routing	COP	FL	Receiving Sector
Other	Other	L603 / DCT	LAMSO	Odd	MDD
		L620 / M183 / M197 / P137 / DCT	REDFA		MDD
		P155 / P44 / Q295 / DCT	SOMVA		

5.2.4 Other destinations (from EGPX)

From	To	Routing	COP	FL	Receiving Sector
Other	Other	L74 / M982	TOPPA	Odd	MDD
		L7 / M90 / N610	LONAM		