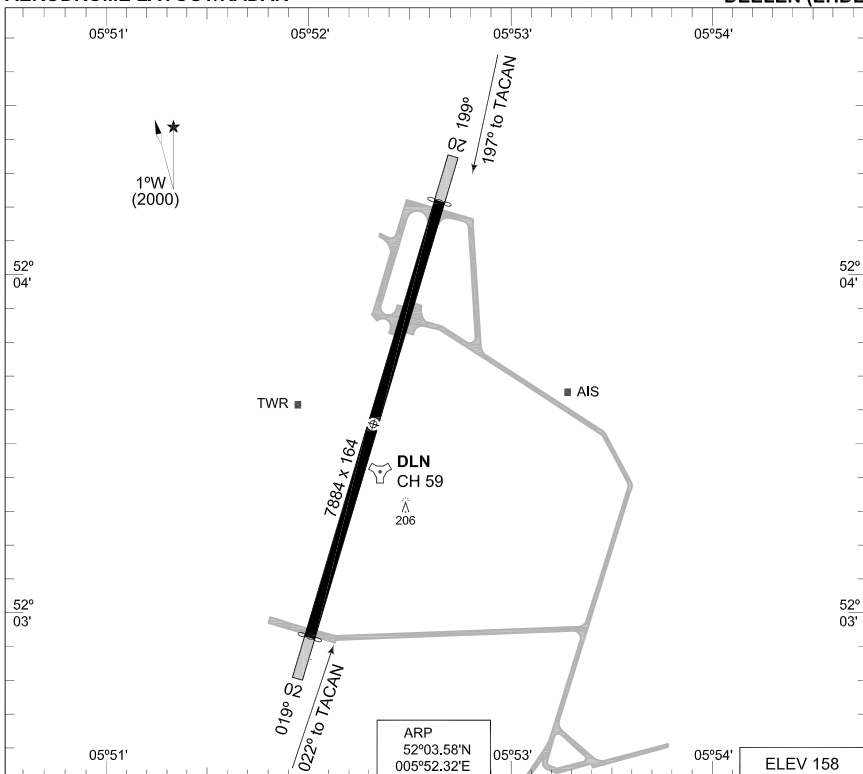


**TERPS
AERODROME LAYOUT/RADAR**

DEELEN (EHDL)



ARP
52°03.58'N
005°52.32'E

ELEV 158

RWY	LCN	TORA	ASDA	TODA	LDA					TDZE	THR PSN	
20	30	9678	9678	9678	8779					158	52°04.20'N	005°52.62'E
02	30	9678	9678	9678	8783					144	52°02.96'N	005°52.01'E

DEELEN TWR 371.475
RAPCON WEST 281.475 123.575

	RWY	GS	TCH	OTCH	RPI	CAT	MINIMA	
SRA	20					ABC	600	-1600 442 (500-1.6)
						DE	600	-2000 442 (500-2.0)
	02					COPTER	600	-400 442 (500-0.4)
						ABC	480	-1.6 336 (400-1.6)
						DE	480	-2.0 336 (400-2.0)
CIR	021					COPTER	480	-0.8 336 (400-0.8)
							NOT AUTHORIZED	

CHANGES; ALS; ASI; EDITORIAL

RNLAF 21 OCT 2010

AERODROME LAYOUT/RADAR

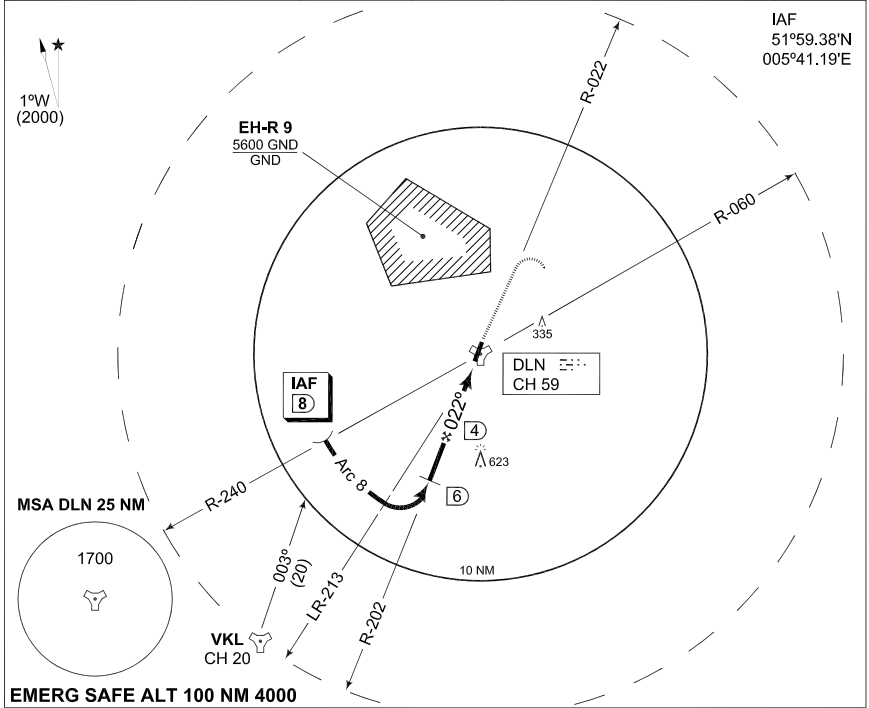
DEELEN (EHDL)

**TERPS
INSTRUMENT APPROACH CHART**

AD ELEV 158

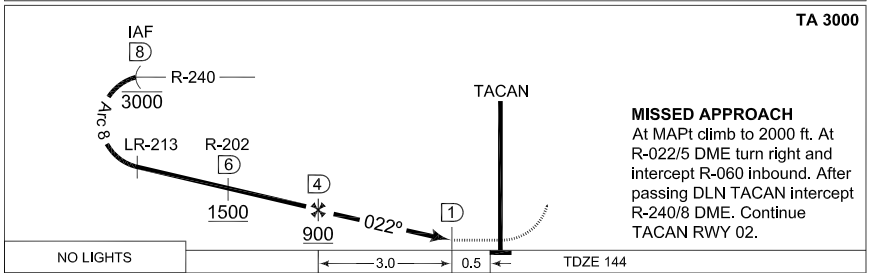
**TACAN RWY 02
DEELEN (EHDL)**

DUTCH MIL 264.325 132.350		RAPCON WEST 281.475 123.575		DEELEN TWR 371.475			
TACAN DLN CH 59	APP COURSE 022°	FAF ALT 900 FT	Descent GR	MDA 480	TDZE 144	ALS -	LDA 8783 FT



IAF
51°59.38'N
005°41.19'E

EMERG SAFE ALT 100 NM 4000



TA 3000

MISSED APPROACH
At MAPt climb to 2000 ft. At R-022/5 DME turn right and intercept R-060 inbound. After passing DLN TACAN intercept R-240/8 DME. Continue TACAN RWY 02.

NO LIGHTS TDZE 144

CATEGORY	COPTER	A	B	C	D	E
S-TACAN 02	480 -0.8 336 (400-0.8)		480 -1.6 336 (400-1.6)			480 -2.0 336 (400-2.0)
CIRCLING		NOT AUTHORIZED				

CHANGES: ALS

RNLAF 6 MAY 2010

TACAN RWY 02

52°03.58'N
005°52.33'E

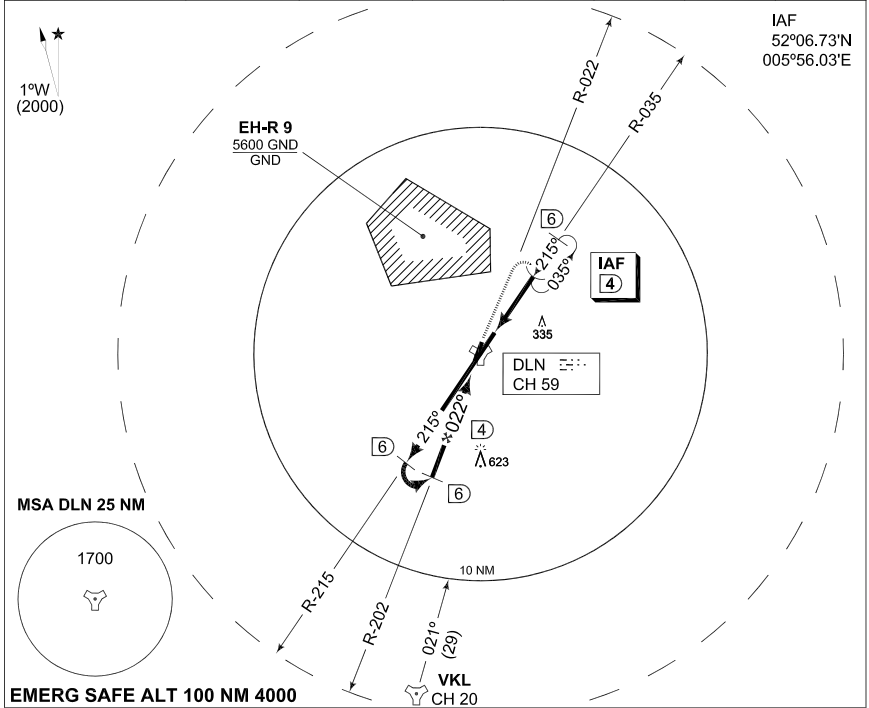
DEELEN (EHDL)

**TERPS
INSTRUMENT APPROACH CHART**

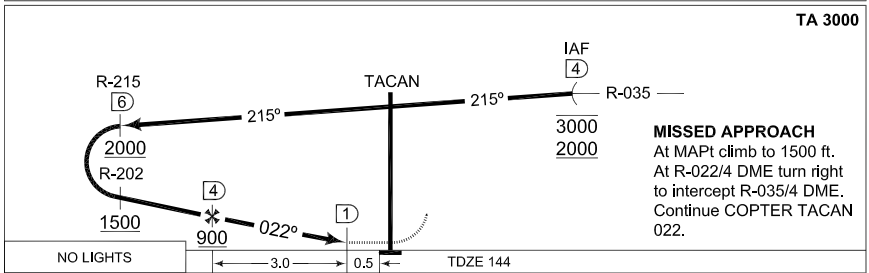
**COPTER TACAN 022
DEELEN (EHDL)**

AD ELEV 158

DUTCH MIL 264.325 132.350		RAPCON WEST 281.475 123.575		DEELEN TWR 371.475			
TACAN DLN CH 59	APP COURSE 022°	FAF ALT 900 FT	Descent GR	MDA 480	TDZE 144	ALS -	LDA 8783 FT



TA 3000



CATEGORY	COPTER
S-TACAN 022	480 -0.8 336 (400-0.8)
CIRCLING	NOT AUTHORIZED

CHANGES: ALS

RNLAF 6 MAY 2010

COPTER TACAN 022

52°03.58'N
005°52.33'E

DEELEN (EHDL)

**TERPS
INSTRUMENT APPROACH CHART**

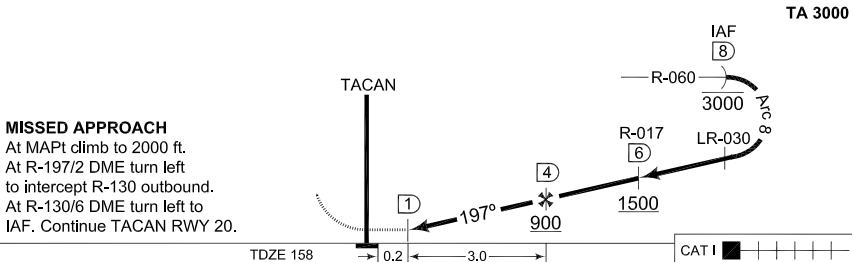
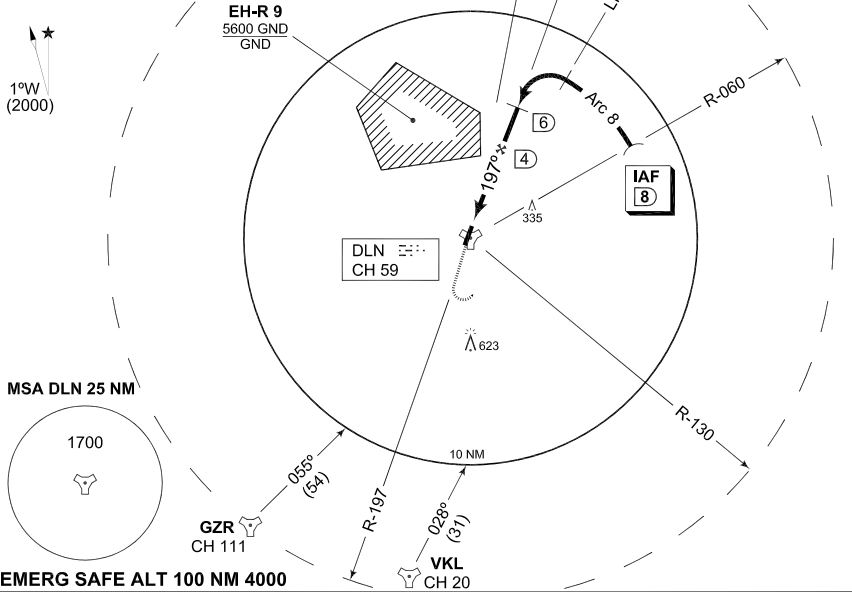
AD ELEV 158

**TACAN RWY 20
DEELEN (EHDL)**

DUTCH MIL 264.325 132.350		RAPCON WEST 281.475 123.575		DEELEN TWR 371.475			
TACAN DLN CH 59	APP COURSE 197°	FAF ALT 900	Descent GR	MDA 600	TDZE 158	ALS 2570 FT	LDA 8779 FT

NOTE:
 a) DO NOT CROSS WEST OF R-010
 b) RADAR MONITORING MANDATORY

IAF
 52°07.48'N
 006°03.54'E



CATEGORY	COPTER	A	B	C	D	E
S-TACAN 20	600-400 442 (500-0.4)	600 -1400 442 (500-1.4)			600 -1600 442 (500-1.6)	
CIRCLING	NOT AUTHORIZED					

TACAN RWY 20

52°03.58'N
005°52.33'E

DEELEN (EHDL)

CHANGES:ALS

RNLAF 6 MAY 2010

**TERPS
INSTRUMENT APPROACH CHART**

AD ELEV 158

**COPTER TACAN 197
DEELEN (EHDL)**

DUTCH MIL 264.325 132.350		RAPCON WEST 281.475 123.575		DEELEN TWR 371.475			
TACAN DLN CH 59	APP COURSE 197°	FAF ALT 900 FT	Descent GR	MDA 600	TDZE 158	ALS 2570 FT	LDA 8779 FT

NOTE:
 a) DO NOT CROSS WEST OF R-010
 b) RADAR MONITORING MANDATORY

IAF
 52°06.47'N
 006°00.73'E

1°W
 (2000)

EH-R 9
 5600 GND
 GND

DLN
 CH 59

623

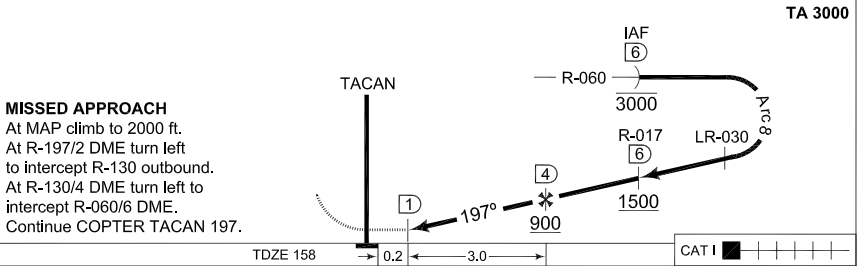
MSA DLN 25 NM

1700

EMERG SAFE ALT 100 NM 4000

VKLL
 CH 20

CHANGES:ALS



CATEGORY	COPTER
S-TACAN 197	600 -400 442 (500-0.4)
CIRCLING	NOT AUTHORIZED

COPTER TACAN 197

52°03.58'N
 005°52.33'E

DEELEN (EHDL)

RNLAF 6 MAY 2010