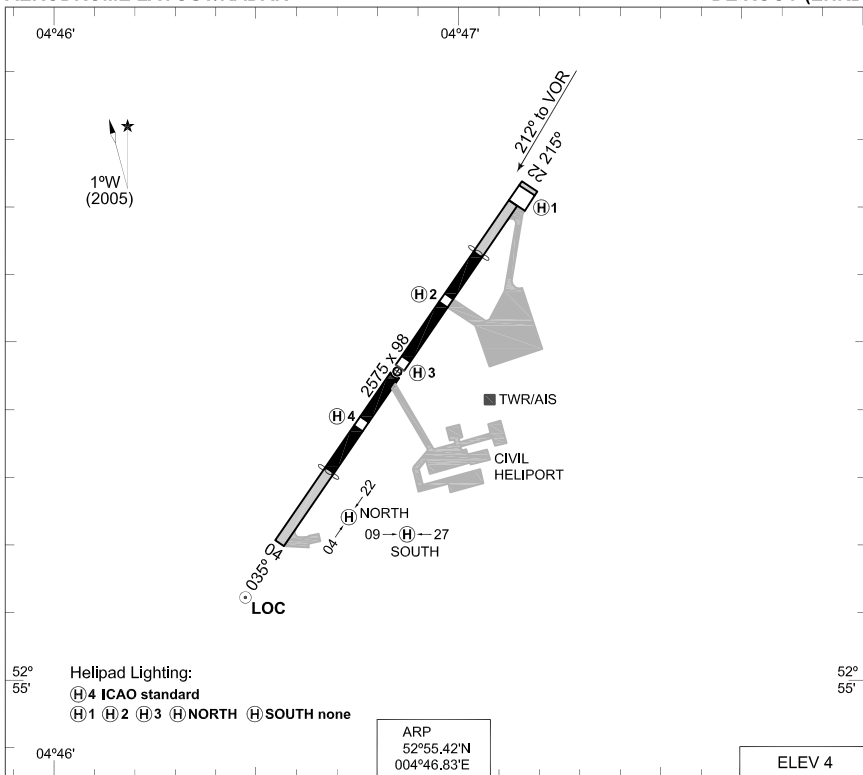


MIPS  
AERODROME LAYOUT/RADAR

DE KOOY (EHKD)



RWY	PCN	TORA	ASDA	TODA	LDA					TDZE	THR PSN	
22	37 R/C/W/T	3379	4183	3576	3379					4	52°55.58'N	004°47.03'E
04	37 R/C/W/T	3379	4183	3576	3379					3	52°55.23'N	004°46.64'E

DE KOOY TWR 234.800 120.125 121.725 or 234.800 (Ground Control)  
 DE KOOY RADAR-APPROACH 341.550 124.225

	RWY	GS	TCH	OTCH	RPI	CAT	MINIMA	
SRA	22					ABH	500 -2000 496 (500-2.0)	
	04					ABH	380 -2800 377 (400-2.8)	
CIR	22					A	510 -1900 506 (600-1.9)	
						B	550 -2800 546 (600-2.8)	
						H	510 -1900 506 (600-1.9)	
	04						A	510 -1900 506 (600-1.9)
							B	550 -2800 546 (600-2.8)
							H	510 -1900 506 (600-1.9)

CHANGES: ALS, EDITORIAL

RNLAF 21 OCT 2010

AERODROME LAYOUT/RADAR

DE KOOY (EHKD)



**MIPS**  
**INSTRUMENT APPROACH CHART**

**COPTER VOR/DME RWY 04**  
**DE KOOY (EHKD)**

AD ELEV 4

DUTCH MIL 264.325 132.350		DE KOOY APP 341.550 124.225		DE KOOY TWR 234.800 120.125		GND CTL 234.800 121.725		
VOR/DME HDR 115.550/CH 102Y		APP COURSE 011°	FAF ALT 2000 FT	Descent GR	MDA <b>SEE CAT</b>	TDZE 3	ALS -	LDA 3379 FT

**CAUTION:**  
a) FINAL TRACK 24 DEG  
OFFSET FROM RWY  
CENTERLINE

**NOTE:**  
① CIRCLING NOT  
AUTHORIZED NORTH-WEST  
OF RWY AND RWY CENTERLINE

1°W  
(2005)

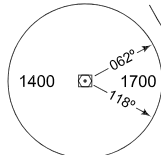
**EH-R 8**  
32800 MSL

**HDR**  
115.550  
CH 102Y

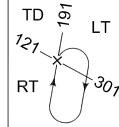
**IAF HDR**

**PETTEN**  
2000 AGL  
GND

**MSA HDR 25 NM**

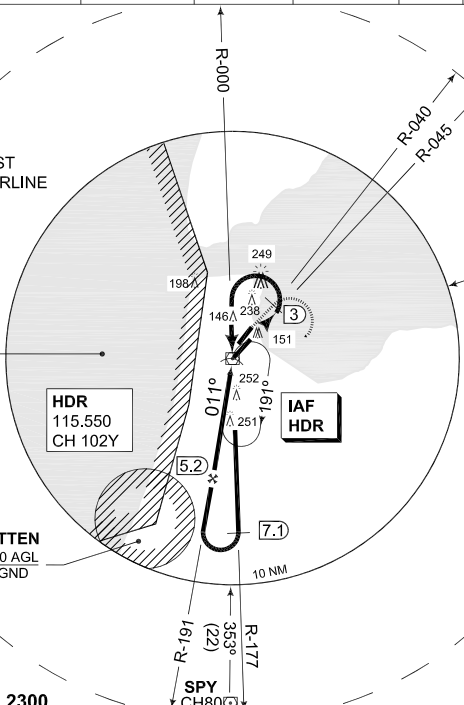


**EMERG SAFE ALT 100 NM 2300**

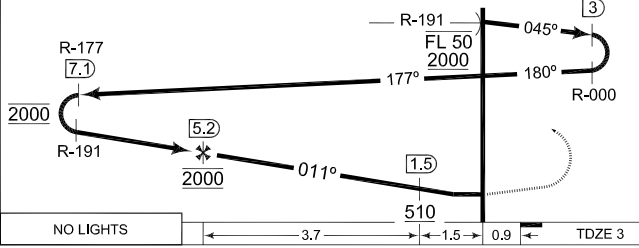


IAF  
52°54.41'N  
004°45.94'E

**LWD**  
CH 94  
(40)



**EMERG SAFE ALT 100 NM 2300** **TA 3000**



**MISSED APPROACH**  
At MAPt maintain final track 011° MAG and climb to 2000 ft AMSL. At 1000 ft AMSL turn right to intercept R-040 outbound. At R-040/3 DME turn right inbound HDR. Intercept the holding at 2000 ft AMSL. Inform ATC.

NO LIGHTS 3.7 1.5 0.9 TDZE 3

CATEGORY	H
S-VOR 04	<b>320</b> -1800 317 (400-1.8)
CIRCLING ①	<b>510</b> -1900 506 (600-1.9)
SRA 04	<b>380</b> -2800 377 (400-2.8)

CHANGES: ALS, EDITORIAL

RNLAF 6 MAY 2010

**COPTER VOR/DME RWY 04**

52°55.42'N  
004°46.83'E

**DE KOOY (EHKD)**

**MIPS  
INSTRUMENT APPROACH CHART**

**ILS RWY 22  
DE KOOY (EHKD)**

DUTCH MIL 264.325 132.350		DE KOOY APP 341.550 124.225		DE KOOY TWR 234.800 120.125		GND CTL 234.800 121.725	
LOCALIZER DK 109.700	APP COURSE 215°	GS INTCP ALT 2000 FT	GS 3°	DA 204	TDZE 4	ALS 2855 FT	LDA 3379 FT

AD ELEV 4

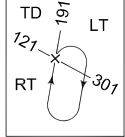
**CAUTION:**

- a) USE DME OF HDR VOR/DME
- b) DME NOT FREQ. PAIRED
- c) IF DME U/S, POSITION 5 HDR WILL BE SUBSTITUTED BY RADAR FIX

**NOTE:**

- d) CIRCLING NOT AUTHORIZED NORTH-WEST OF RWY AND RWY CENTERLINE
- e) OVERFLYING THE NATURAL GAS PLANT SITUATED APPROX. 1000 M EAST OF THE RWY MUST BE AVOIDED

**DME REQUIRED**



IAF  
52°54.41'N  
004°45.94'E

LWD  
CH 94  
(40)

1°W  
(2005)

EH-R 8  
32800 MSL

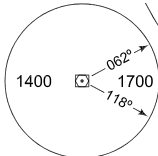
HDR  
115.550  
CH 102Y

FAF GP INOP  
7.5  
9.6

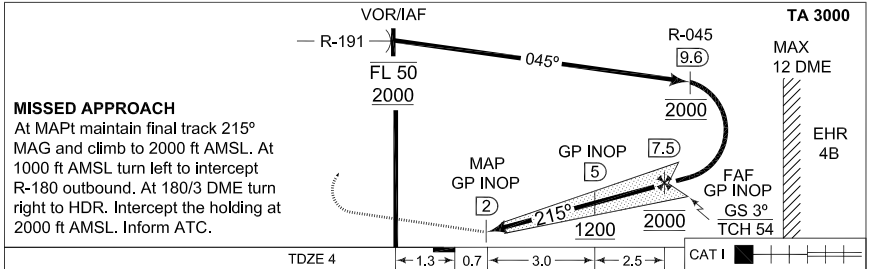
IAF HDR

PETTEN  
2000 AGL  
GND

MSA HDR 25 NM



EMERG SAFE ALT 100 NM 2300



**MISSED APPROACH**

At MAPt maintain final track 215°  
MAG and climb to 2000 ft AMSL. At 1000 ft AMSL turn left to intercept R-180 outbound. At 180/3 DME turn right to HDR. Intercept the holding at 2000 ft AMSL. Inform ATC.

CATEGORY	A	B	H
S-ILS 22	<b>204</b> -800 200 (200-0.8)		<b>204</b> -400 200 (200-0.4)
CIRCLING <b>d)</b>	<b>510</b> -1900 506 (600-1.9)	<b>550</b> -2800 546 (600-2.8)	<b>510</b> -1900 506 (600-1.9)
S-LOC 22	<b>330</b> -800 326 (400-0.8)		<b>330</b> -400 326 (400-0.4)

CHANGES: ALS

**ILS RWY 22**

52°55.42'N  
004°46.83'E

**DE KOOY (EHKD)**

RNLAF 6 MAY 2010

**MIPS**  
**INSTRUMENT APPROACH CHART**

**VOR/DME RWY 22**  
**DE KOOY (EHKD)**

AD ELEV 4

DUTCH MIL 264.325 132.350		DE KOOY APP 341.550 124.225		DE KOOY TWR 234.800 120.125		GND CTL 234.800 121.725	
VOR/DME HDR 115.550/CH 102Y		APP COURSE 212°	FAF ALT 2000 FT	Descent GR	MDA 510	TDZE 4	ALS LDA 2855 FT 3379 FT

**NOTE:**  
 a) CIRCLING NOT AUTHORIZED NORTH-WEST OF RWY AND RWY CENTERLINE  
 b) OVERFLYING THE NATURAL GAS PLANT SITUATED APPROX. 1000 M EAST OF THE RWY MUST BE AVOIDED

1°W (2005)

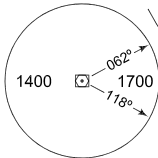
**EH-R 8**  
32800 MSL

**HDR**  
115.550  
CH 102Y

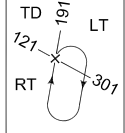
**IAF HDR**

**PETTEN**  
2000 AGL  
GND

**MSA HDR 25 NM**

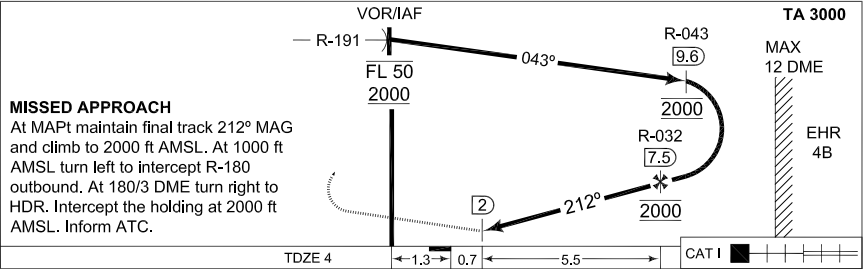
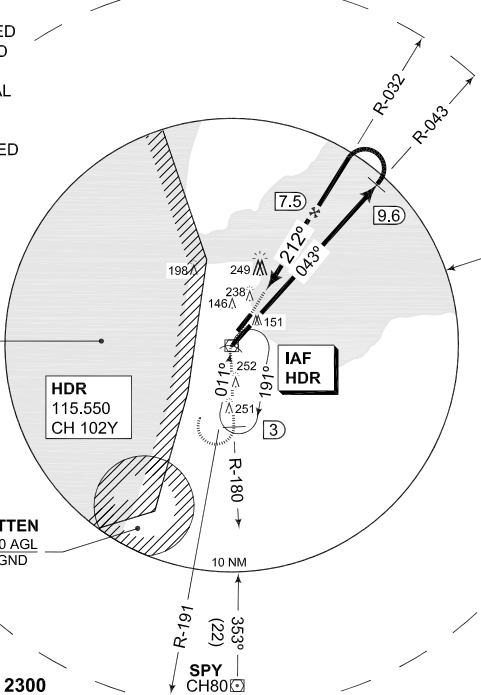


**EMERG SAFE ALT 100 NM 2300**



IAF  
52°54.41'N  
004°45.94'E

**LWD**  
CH 94  
(40)  
243°



**MISSED APPROACH**  
 At MAPt maintain final track 212° MAG and climb to 2000 ft AMSL. At 1000 ft AMSL turn left to intercept R-180 outbound. At 180/3 DME turn right to HDR. Intercept the holding at 2000 ft AMSL. Inform ATC.

	A		B		H	
CATEGORY	510 -800 506 (600-0.8)		510 -2800 546 (600-2.8)		510 -400 506 (600-0.4)	
S-VOR 22	510 -1900 506 (600-1.9)		550 -2800 546 (600-2.8)		510 -1900 506 (600-1.9)	
CIRCLING	510 -1900 506 (600-1.9)		550 -2800 546 (600-2.8)		510 -1900 506 (600-1.9)	
SRA 22	510 -1900 506 (600-1.9)		500 -2000 496 (500-2.0)		510 -1900 506 (600-1.9)	

CHANGES: ALS, EDITORIAL

RNLAF 6 MAY 2010

**VOR/DME RWY 22**

52°55.42'N  
004°46.83'E

**DE KOOY (EHKD)**