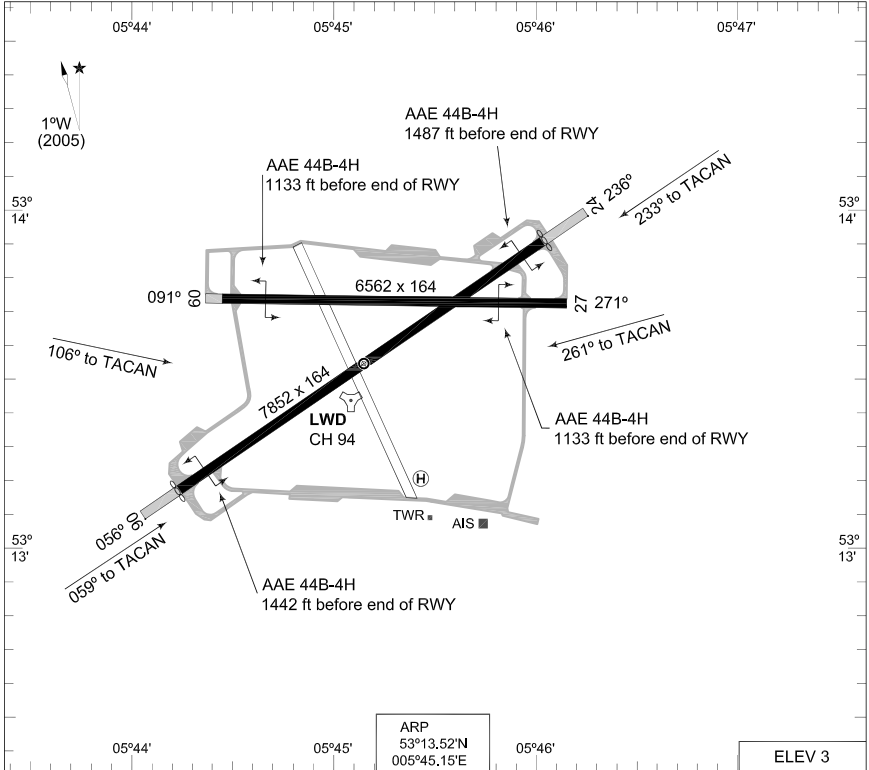


MIPS
AERODROME LAYOUT/RADAR

LEEWARDEN (EHLW)



RWY	PCN	TORA	ASDA	TODA	LDA	PAPI		TDZE	THR	PSN
24	75 F/B/W/T	9703	9703	9703	8646			4	53°13.88'N	005°46.04'E
06	75 F/B/W/T	9703	9703	9703	8907			4	53°13.15'N	005°44.27'E
27	52 F/B/W/T	6562	6562	6562	6562			3	53°13.71'N	005°46.18'E
09	52 F/B/W/T	6562	6562	6562	6361			3	53°13.71'N	005°44.44'E

LEEWARDEN TWR 247.675 120.700 (Ground Control) 281.550
 LEEWARDEN ARRIVAL 279.525
 RAPCON NORTH 337.000 122.100

SRA	RWY	GS	TCH	OTCH	RPI	CAT	MINIMA		
							1st	2nd	
24	06					ABC	360	-1200 356 (400-1.2)	
						DE	360	-1600 356 (400-1.6)	
						ABC	400	-1200 396 (400-1.2)	
						D	400	-1600 396 (400-1.6)	
						E	400	-2000 396 (400-2.0)	
						AB	420	-1.6 416 (500-1.6)	
	27						CD	420	-2.0 416 (500-2.0)
							E	420	-2.4 416 (500-2.4)
							AB	420	-1.6 416 (500-1.6)
							CD	420	-2.0 416 (500-2.0)
							E	420	-2.4 416 (500-2.4)
							AB	420	-1.6 416 (500-1.6)
09						CD	420	-2.0 416 (500-2.0)	
						E	420	-2.4 416 (500-2.4)	
						A	500	-1900 497 (500-1.9)	
						B	510	-2800 507 (600-2.8)	
						C	610	-3700 607 (700-3.7)	
						D	720	-4600 717 (800-4.6)	
CIR	06 / 24 09 / 27					E	820	-6500 817 (900-6.5)	
						H	500	-1900 497 (500-1.9)	

CHANGES: PAPI, ALS, EDITORIAL

RNLAF 21 OCT 2010

AERODROME LAYOUT/RADAR

LEEWARDEN (EHLW)

MIPS
INSTRUMENT APPROACH CHART

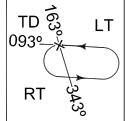
AD ELEV 3

HI-TACAN RWY 06
LEEWARDEN (EHLW)

DUTCH MIL 264.325 132.350		RAPCON NORTH 337.000 122.100		LEEWARDEN TWR 247.675 120.700		GND CTL 281.550	
TACAN LWD CH 94	APP COURSE 059°	FAF ALT 1200 FT	Descent GR	MDA 380	TDZE 4	ALS 2165 FT	LDA 8907 FT

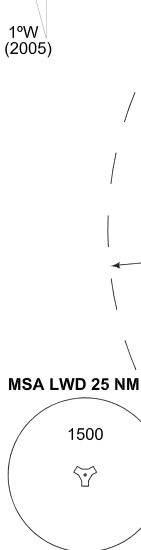
NOTE:
① CIRCLING NOT AUTHORIZED SOUTH OF RWY 06-24

1°W
(2005)

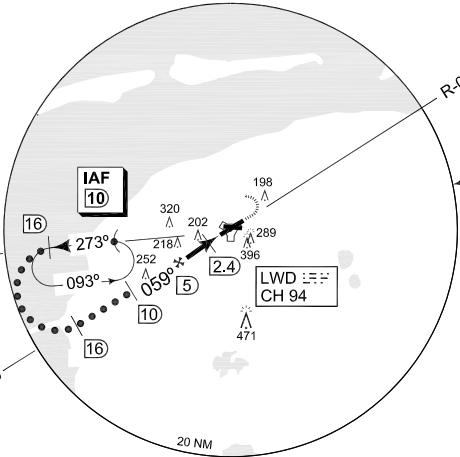


IAF
53°13.71'N
005°28.48'E

WTM
CH 82

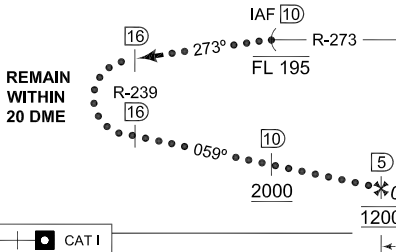


REMAIN WITHIN 20 DME



EMERG SAFE ALT 100 NM 2300

TA 3000



MISSED APPROACH
At MAPt climb to 1200 ft. Intercept R-059 outbound. At R-059/1 DME climb to 3000 ft. At 3000 ft turn left to IAF TACAN RWY 06 (R-275/10 DME).



CATEGORY	C	D	E
MINIMA ACCORDING TO PANS-OPS; NOT ACCORDING TO APATC-1			
S-TACAN 06	380 -1200 376 (400-1.2)	380 -1600 376 (400-1.6)	
CIRCLING ①	610 -3700 607 (700-3.7)	720 -4600 717 (800-4.6)	820 -6500 817 (900-6.5)

CHANGES: ALS

RNLAF 6 MAY 2010

HI-TACAN RWY 06

53°13.52'N
005°45.15'E

LEEWARDEN (EHLW)

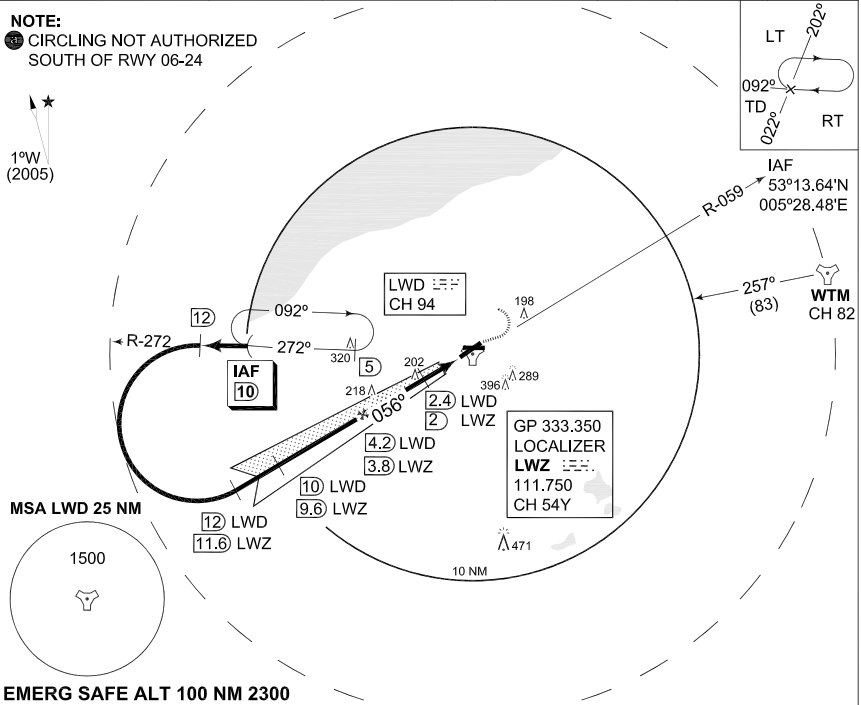
MIPS
INSTRUMENT APPROACH CHART

ILS/DME RWY 06
LEEUWARDEN (EHLW)

AD ELEV 3

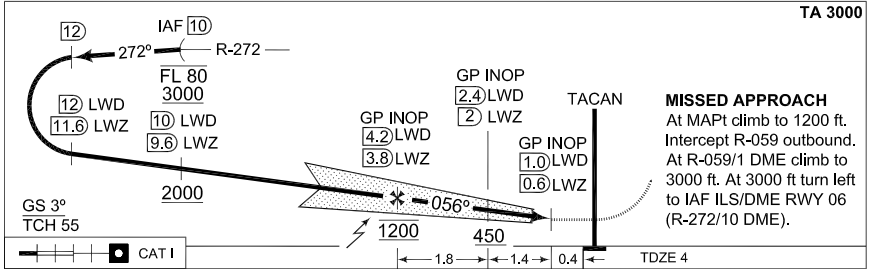
DUTCH MIL 264.325 132.350		RAPCON NORTH 337.000 122.100		LEEUWARDEN TWR 247.675 120.700		GND CTL 281.550	
LOCALIZER / DME LWZ 111.750 / CH 54Y		APP COURSE 056°	GS INTCEPT ALT 1200 FT	GS 3°	DA SEE CAT	TDZE 4	ALS LDA 2165 FT 8907 FT

NOTE:
CIRCLING NOT AUTHORIZED SOUTH OF RWY 06-24



EMERG SAFE ALT 100 NM 2300

TA 3000



MISSED APPROACH
At MAPt climb to 1200 ft. Intercept R-059 outbound. At R-059/1 DME climb to 3000 ft. At 3000 ft turn left to IAF ILS/DME RWY 06 (R-272/10 DME).

CATEGORY	MINIMA ACCORDING TO PANS-OPS; NOT ACCORDING TO APATC-1				
	A	B	C	D	E
S-ILS 06	204 -1200 200 (200-1.2)	204 -1200 200 (200-1.2)	212 -1200 208 (300-1.2)	223 -1200 219 (300-1.2)	241 -1200 237 (300-1.2)
S-LOC 06	340 -1200 336 (400-1.2)				340 -1600 336 (400-1.6)
CIRCLING	500 -1900 497 (500-1.9)	510 -2800 507 (600-2.8)	610 -3700 607 (700-3.7)	720 -4600 717 (800-4.6)	820 -6500 817 (900-6.5)

ILS/DME RWY 06

53°13.52'N
005°45.15'E

LEEUWARDEN (EHLW)

CHANGES: ALS

RNLAF 6 MAY 2010

**MIPS
INSTRUMENT APPROACH CHART**

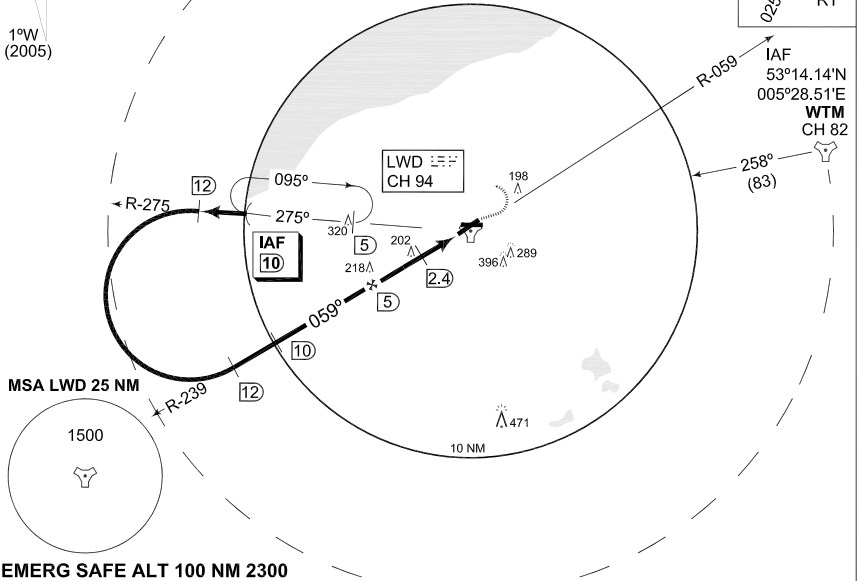
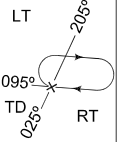
**TACAN RWY 06
LEEUWARDEN (EHLW)**

AD ELEV 3

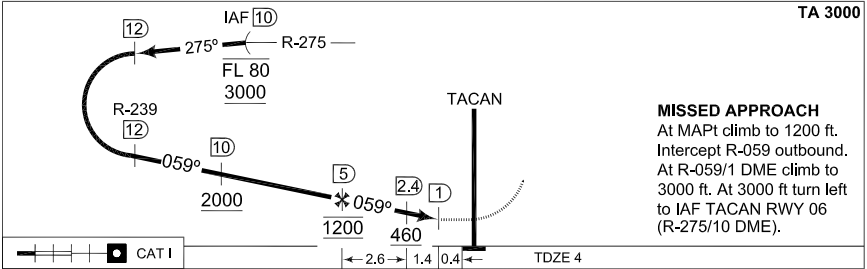
DUTCH MIL 264.325 132.350		RAPCON NORTH 337.000 122.100		LEEUWARDEN TWR 247.675 120.700		GND CTL 281.550	
TACAN LWD CH 94		APP COURSE 059°		FAF ALT 1200 FT		Descent GR	
				MDA 380		TDZE 4	
						ALS 2165 FT	
						LDA 8907 FT	

NOTE:
① CIRCLING NOT AUTHORIZED SOUTH OF RWY 06-24

1°W
(2005)



EMERG SAFE ALT 100 NM 2300



MISSED APPROACH
At MAPt climb to 1200 ft. Intercept R-059 outbound. At R-059/1 DME climb to 3000 ft. At 3000 ft turn left to IAF TACAN RWY 06 (R-275/10 DME).



CATEGORY	A	B	C	D	E
MINIMA ACCORDING TO PANS-OPS; NOT ACCORDING TO APATC-1					
S-TACAN 06	380 -1200 376 (400-1.2)			380 -1600 376 (400-1.6)	
CIRCLING ①	500 -1900 497 (500-1.9)	510 -2800 507 (600-2.8)	610 -3700 607 (700-3.7)	720 -4600 717 (800-4.6)	820 -6500 817 (900-6.5)

CHANGES: ALS

RNLAF 6 MAY 2010

TACAN RWY 06

53°13.52'N
005°45.15'E

LEEUWARDEN (EHLW)

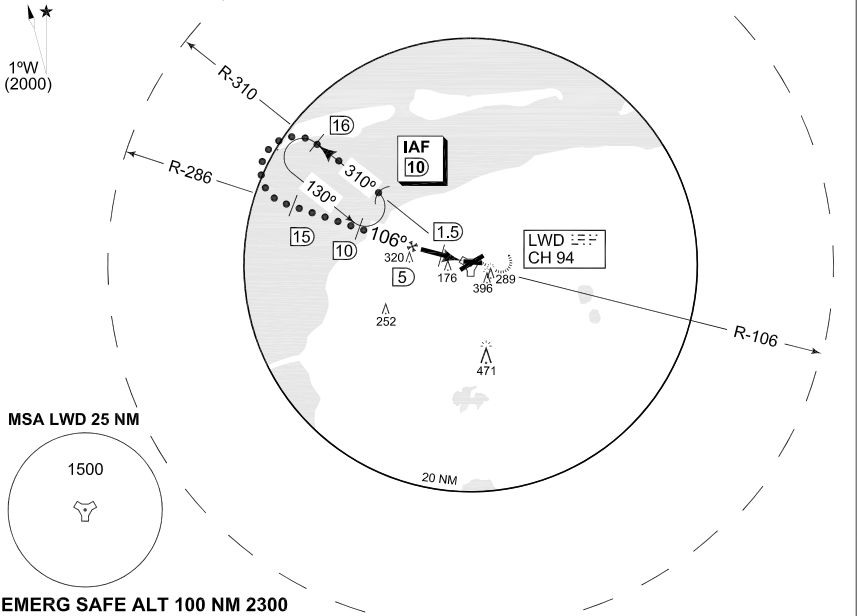
MIPS
INSTRUMENT APPROACH CHART

HI-TACAN RWY 09
LEEWARDEN (EHLW)

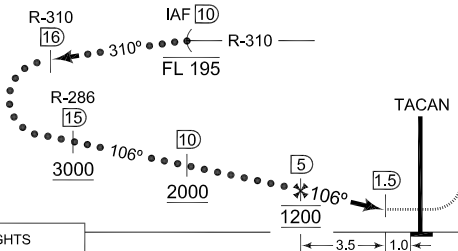
AD ELEV 3

DUTCH MIL 264.325 132.350		RAPCON NORTH 337.000 122.100		LEEWARDEN TWR 247.675 120.700		GND CTL 281.550	
TACAN LWD CH 94		APP COURSE 106°		FAF ALT 1200 FT		Descent GR MDA 420	
				TDZE 3		ALS -	
						LDA 6361 FT	

NOTE:
① CIRCLING NOT AUTHORIZED SOUTH OF RWY 06-24



TA 3000



MISSED APPROACH
At MAPt (R-286/1.5 DME) climb to 1200 ft. When passing R-106/1 DME climb to 3000 ft, then turn left towards IAF low RWY 09.

NO LIGHTS

CATEGORY	C	D	E
MINIMA ACCORDING TO PANS-OPS; NOT ACCORDING TO APATC-1			
S-TACAN 09	420 -2.0 416 (500-2.0)		420 -2.4 416 (500-2.4)
CIRCLING ①	620 -3700 617 (700-3.7)	720 -4600 717 (800-4.6)	820 -6500 817 (900-6.5)

CHANGES: ALS

RNLAF 6 MAY 2010

HI-TACAN RWY 09

53°13.52'N
005°45.15'E

LEEWARDEN (EHLW)

MIPS
INSTRUMENT APPROACH CHART

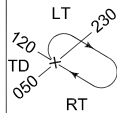
AD ELEV 3

ILS/DME RWY 09
LEEWARDEN (EHLW)

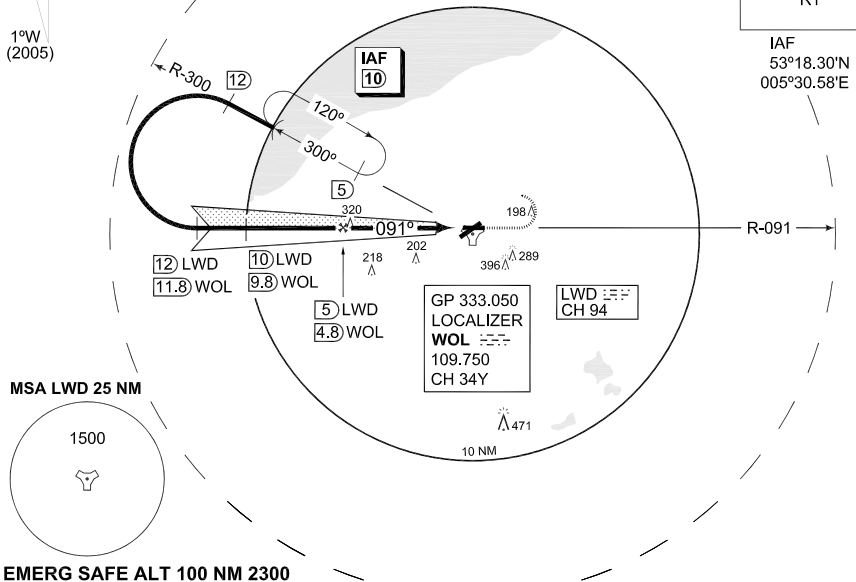
DUTCH MIL 264.325 132.350		RAPCON NORTH 337.000 122.100		LEEWARDEN TWR 247.675 120.700		GND CTL 281.550		
LOCALIZER / DME WOL 109.750 / CH 34Y		APP COURSE 091°	GS INTCEPT ALT 1200 FT	GS 3°	MDA SEE CAT	TDZE 3	ALS -	LDA 6361 FT

NOTE:
① CIRCLING NOT AUTHORIZED SOUTH OF RWY 06-24

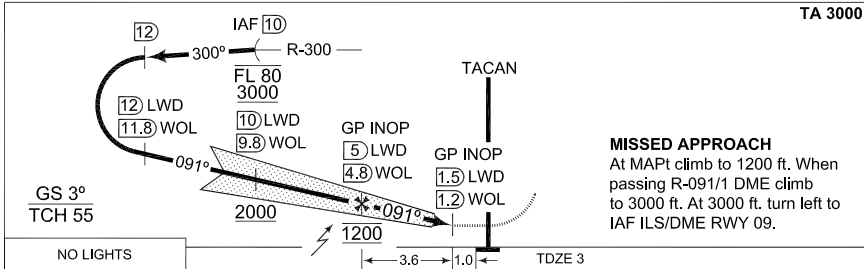
1°W
(2005)



IAF
53°18.30'N
005°30.58'E



TA 3000



MISSED APPROACH

At MAPt climb to 1200 ft. When passing R-091/1 DME climb to 3000 ft. At 3000 ft. turn left to IAF ILS/DME RWY 09.

CATEGORY	A	B	C	D	E	H
MINIMA ACCORDING TO PANS-OPS: NOT ACCORDING TO APATC-1						
S-ILS 09	209-1600 206 (300-1.6)	221-1600 218 (300-1.6)	229-1600 226 (300-1.6)	240-1600 237 (300-1.6)	258-1600 255 (300-1.6)	203-800 200 (200-0.8)
S-LOC 09	430-1600 427 (500-1.6)	430-2000 427 (500-2.0)	430-2000 427 (500-2.0)	430-2400 427 (500-2.4)	430-800 427 (500-0.8)	430-800 427 (500-0.8)
CIRCLING ①	500-1900 497 (500-1.9)	510-2800 507 (600-2.8)	610-3700 607 (700-3.7)	720-4600 717 (800-4.6)	820-6500 817 (900-6.5)	N.A.

ILS/DME RWY 09

53°13.52'N
005°45.15'E

LEEWARDEN (EHLW)

CHANGES: ALS

RNLAF 6 MAY 2010

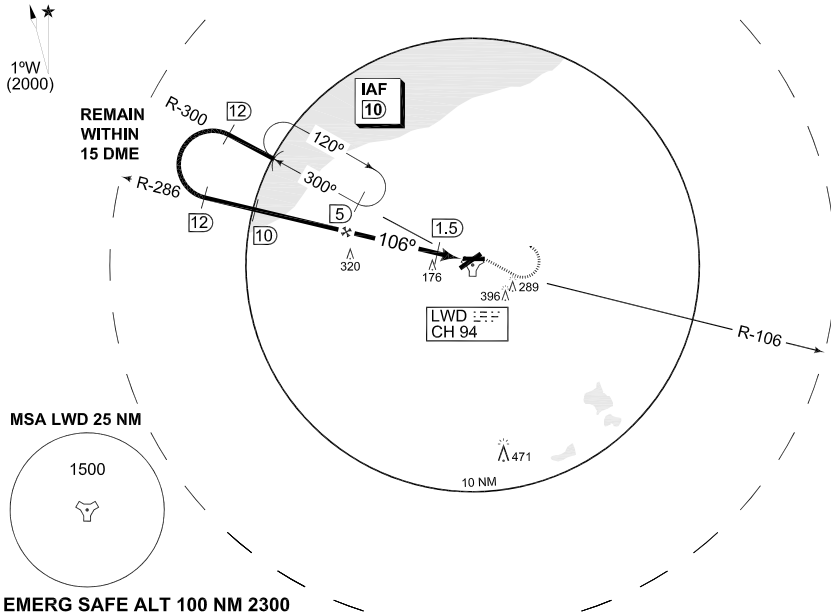
MIPS
INSTRUMENT APPROACH CHART

TACAN RWY 09
LEEWARDEN (EHLW)

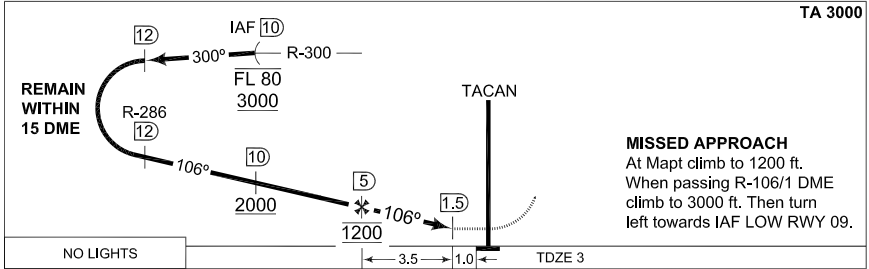
AD ELEV 3

DUTCH MIL 264.325 132.350		RAPCON NORTH 337.000 122.100		LEEWARDEN TWR 247.675 120.700		GND CTL 281.550	
TACAN LWD CH 94		APP COURSE 106°		FAF ALT 1200 FT		Descent GR MDA 420	
				TDZE 3		ALS -	
						LDA 6361 FT	

NOTE:
① CIRCLING NOT AUTHORIZED SOUTH OF RWY 06-24



TA 3000



MISSED APPROACH
At Mapt climb to 1200 ft.
When passing R-106/1 DME climb to 3000 ft. Then turn left towards IAF LOW RWY 09.

CATEGORY	A	B	C	D	E
MINIMA ACCORDING TO PANS-OPS; NOT ACCORDING TO APATC-1					
S-TACAN 09	420 -1.6 416 (500-1.6)		420 -2.0 416 (500-2.0)		420 -2.4 416 (500-2.4)
CIRCLING ①	500 -1900 497 (500-1.9)	510 -2800 507 (600-2.8)	620 -3700 617 (700-3.7)	720 -4600 717 (800-4.6)	820 -6500 817 (900-6.5)

CHANGES: ALS

RNLAF 6 MAY 2010

TACAN RWY 09

53°13.52'N
005°45.15'E

LEEWARDEN (EHLW)

MIPS
INSTRUMENT APPROACH CHART

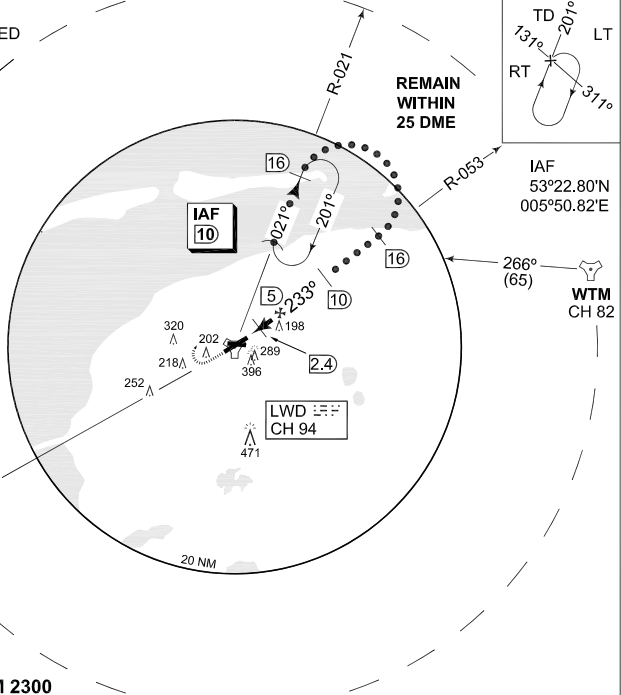
AD ELEV 3

HI-TACAN RWY 24
LEEWARDEN (EHLW)

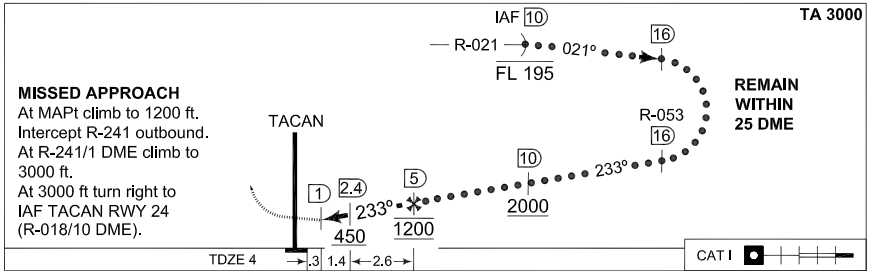
DUTCH MIL 264.325 132.350		RAPCON NORTH 337.000 122.100		LEEWARDEN TWR 247.675 120.700		GND CTL 281.550	
TACAN LWD CH 94		APP COURSE 233°		Descent GR 1200 FT		MDA 380	
				TDZE 4		ALS 2362 FT	
						LDA 8646 FT	

NOTE:
● CIRCLING NOT AUTHORIZED SOUTH OF RWY 06-24

1°W
(2005)



EMERG SAFE ALT 100 NM 2300



MISSED APPROACH
At MAPt climb to 1200 ft.
Intercept R-241 outbound.
At R-241/1 DME climb to 3000 ft.
At 3000 ft turn right to IAF TACAN RWY 24 (R-018/10 DME).

CATEGORY	C	D	E
MINIMA ACCORDING TO PANS-OPS; NOT ACCORDING TO APATC-1			
S-TACAN 24	380 -800 376 (400-0.8)	380 -1200 376 (400-1.2)	
CIRCLING ●	610 -3700 607 (700-3.7)	720 -4600 717 (800-4.6)	820 -6500 817 (900-6.5)

HI-TACAN RWY 24

53°13.52'N
005°45.15'E

LEEWARDEN (EHLW)

CHANGES: ALS

RNLAF 6 MAY 2010

MIPS
INSTRUMENT APPROACH CHART

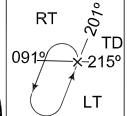
ILS/DME RWY 24
LEEUWARDEN (EHLW)

AD ELEV 3

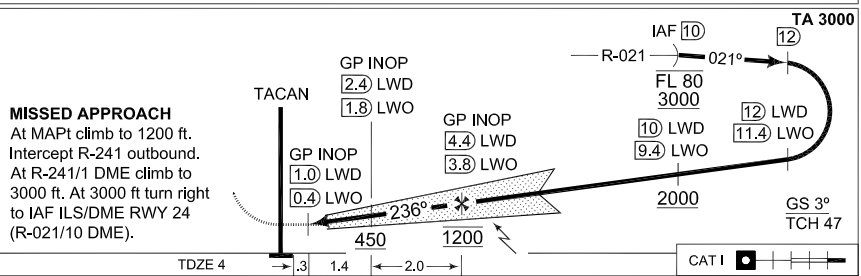
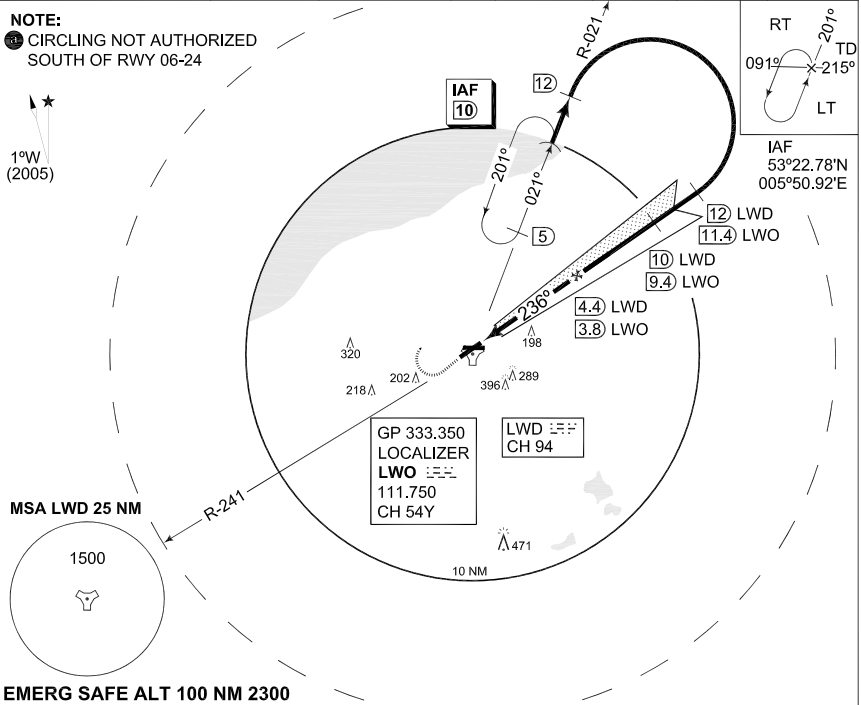
DUTCH MIL 264.325 132.350		RAPCON NORTH 337.000 122.100		LEEUWARDEN TWR 247.675 120.700		GND CTL 281.550		
LOCALIZER / DME LWO 111.750 / CH 54Y		APP COURSE 236°	GS INCEPT ALT 1200 FT	GS 3°	DA SEE CAT	TDZE 4	ALS 2362 FT	LDA 8646 FT

NOTE:
CIRCLING NOT AUTHORIZED SOUTH OF RWY 06-24

1°W
(2005)



IAF
53°22.78'N
005°50.92'E



CATEGORY	MINIMA ACCORDING TO PANS-OPS: NOT ACCORDING TO APATC-1				
	A	B	C	D	E
S-ILS 24	210-800 206 (300-0.8)	222-800 218 (300-0.8)	230-800 226 (300-0.8)	241-800 237 (300-0.8)	259-800 255 (300-0.8)
S-LOC 24	350-800 346 (400-0.8)			350-1200 346 (400-1.2)	
CIRCLING	500-1900 497 (500-1.9)	510-2800 507 (600-2.8)	610-3700 607 (700-3.7)	720-4600 717 (800-4.6)	820-6500 817 (900-6.5)

ILS/DME RWY 24

53°13.52'N
005°45.15'E

LEEUWARDEN (EHLW)

CHANGES: ALS

RNLAF 6 MAY 2010

MIPS
INSTRUMENT APPROACH CHART

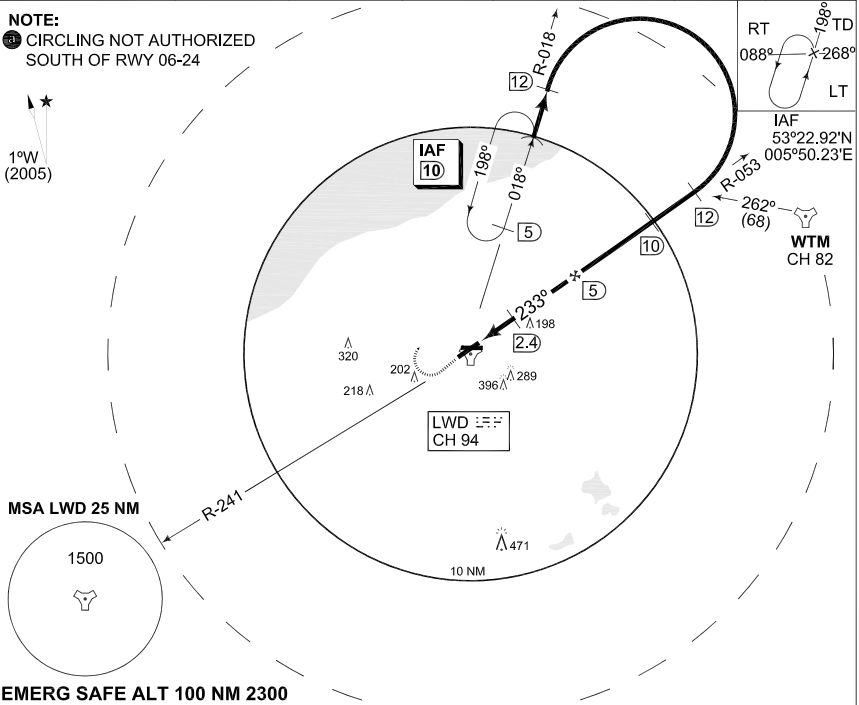
TACAN RWY 24
LEEUWARDEN (EHLW)

AD ELEV 3

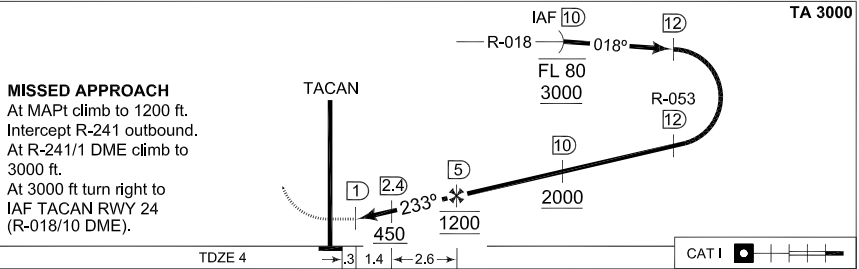
DUTCH MIL 264.325 132.350		RAPCON NORTH 337.000 122.100		LEEUWARDEN TWR 247.675 120.700		GND CTL 281.550	
TACAN LWD CH 94		APP COURSE 233°		Descent GR 1200 FT		MDA 380	
						TDZE 4	
						ALS 2362 FT	
						LDA 8646 FT	

NOTE:
CIRCLING NOT AUTHORIZED SOUTH OF RWY 06-24

1°W
(2005)



EMERG SAFE ALT 100 NM 2300



MISSED APPROACH
At MAPt climb to 1200 ft.
Intercept R-241 outbound.
At R-241/1 DME climb to 3000 ft.
At 3000 ft turn right to IAF TACAN RWY 24 (R-018/10 DME).

CATEGORY	MINIMA ACCORDING TO PANS-OPS; NOT ACCORDING TO APATC-1				
	A	B	C	D	E
S-TACAN 24	380 -800 376 (400-0.8)			380 -1200 376 (400-1.2)	
CIRCLING	500 -1900 497 (500-1.9)	510 -2800 507 (600-2.8)	610 -3700 607 (700-3.7)	720 -4600 717 (800-4.6)	820 -6500 817 (900-6.5)

CHANGES: ALS

RNLAF 6 MAY 2010

TACAN RWY 24

53°13.52'N
005°45.15'E

LEEUWARDEN (EHLW)

MIPS
INSTRUMENT APPROACH CHART

AD ELEV 3

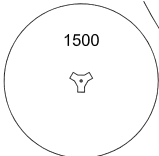
HI-TACAN RWY 27
LEEWARDEN (EHLW)

DUTCH MIL 264.325 132.350		RAPCON NORTH 337.000 122.100		LEEWARDEN TWR 247.675 120.700		GND CTL 281.550	
TACAN LWD CH 94		APP COURSE 261°		Descent GR 1200 FT		MDA 420	
				TDZE 4		ALS -	
						LDA 6562 FT	

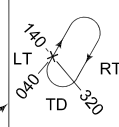
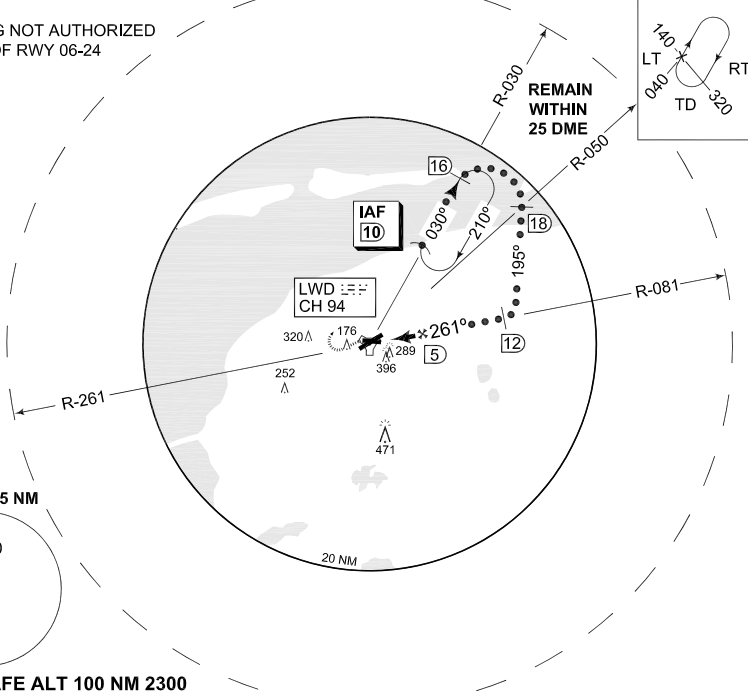
NOTE:
CIRCLING NOT AUTHORIZED
SOUTH OF RWY 06-24

1°W
(2000)

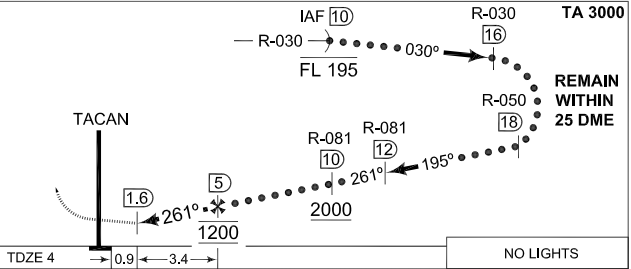
MSA LWD 25 NM



EMERG SAFE ALT 100 NM 2300



MISSED APPROACH
At Mapt climb to 1200 ft.
When passing R-261/1 DME
climb to 3000 ft, then turn
right to IAF low RWY 27.



	TDZE 4		NO LIGHTS	
CATEGORY	C		D	
	MINIMA ACCORDING TO PANS-OPS; NOT ACCORDING TO APATC-1			
S-TACAN 27	420 -2000 416 (500-2.0)		420 -2400 416 (500-2.4)	
CIRCLING	620 -3700 617 (700-3.7)		820 -6500 817 (900-6.5)	

CHANGES: ALS

RNLAF 6 MAY 2010

HI-TACAN RWY 27

53°13.52'N
005°45.15'E

LEEWARDEN (EHLW)

MIPS
INSTRUMENT APPROACH CHART

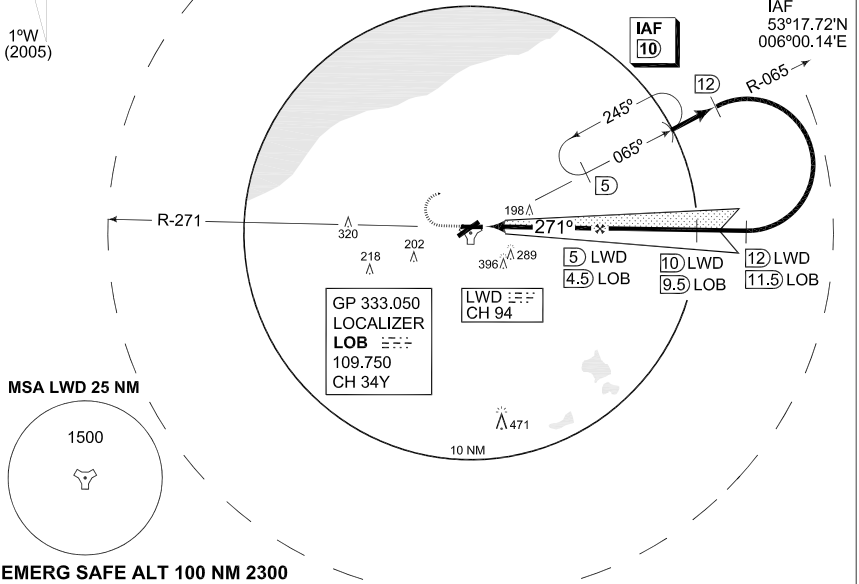
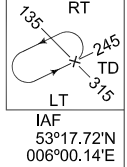
ILS/DME RWY 27
LEEWARDEN (EHLW)

AD ELEV 3

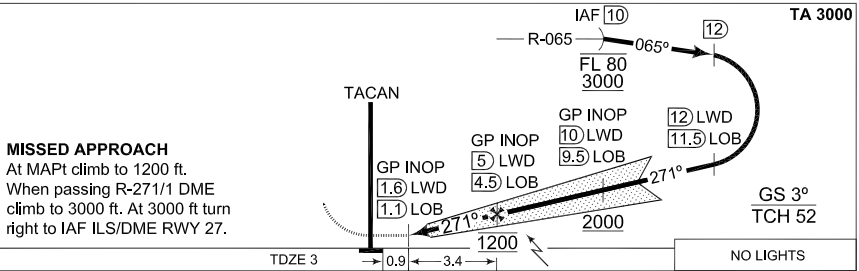
DUTCH MIL 264.325 132.350		RAPCON NORTH 337.000 122.100		LEEWARDEN TWR 247.675 120.700		GND CTL 281.550		
LOCALIZER / DME LOB 109.750 / CH 34Y		APP COURSE 271°	GS INTCEPT ALT 1200 FT	GS 3°	MDA SEE CAT	TDZE 3	ALS -	LDA 6562 FT

NOTE:
CIRCLING NOT AUTHORIZED SOUTH OF RWY 06-24

1°W
(2005)



EMERG SAFE ALT 100 NM 2300



MISSED APPROACH
At MAPt climb to 1200 ft.
When passing R-271/1 DME climb to 3000 ft. At 3000 ft turn right to IAF ILS/DME RWY 27.

TDZE 3, NO LIGHTS

CATEGORY	A	B	C	D	E	H
MINIMA ACCORDING TO PANS-OPS: NOT ACCORDING TO APATC-1						
S-ILS 27	208-1600 205 (300-1.6)	220-1600 217 (300-1.6)	228-1600 225 (300-1.6)	239-1600 236 (300-1.6)	257-1600 254 (300-1.6)	204-800 201 (200-0.8)
S-LOC 27	330-1600 327 (400-1.6)				330-2000 327 (400-2.0)	330-800 327 (400-0.8)
CIRCLING	500-1900 497 (500-1.9)	510-2800 507 (600-2.8)	610-3700 607 (700-3.7)	720-4600 717 (800-4.6)	820-6500 817 (900-6.5)	N.A.

ILS/DME RWY 27

53°13.52'N
005°45.15'E

LEEWARDEN (EHLW)

CHANGES: ALS

RNLAF 6 MAY 2010

MIPS
INSTRUMENT APPROACH CHART

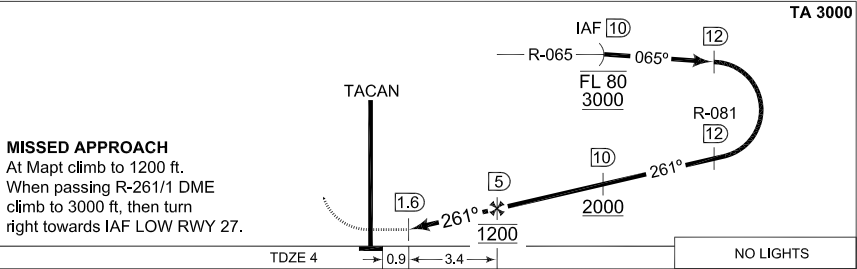
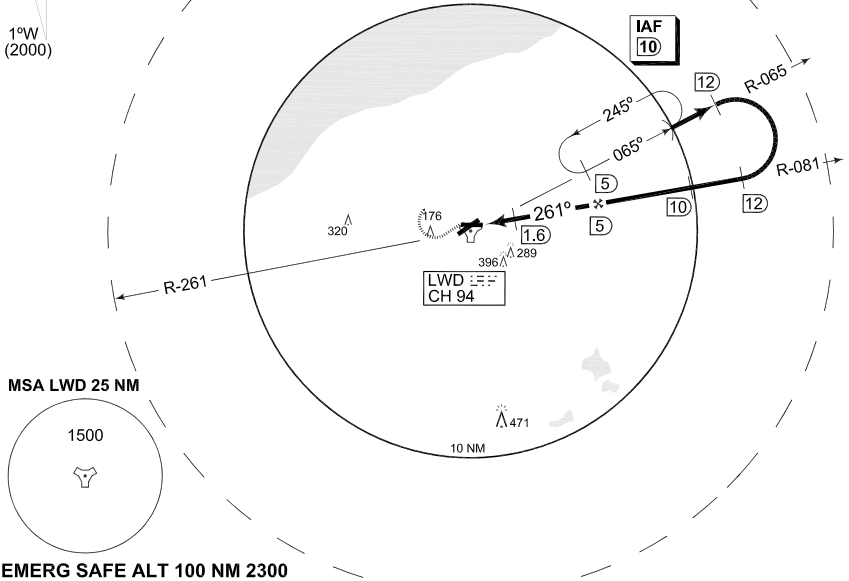
TACAN RWY 27
LEEUWARDEN (EHLW)

AD ELEV 3

DUTCH MIL 264.325 132.350		RAPCON NORTH 337.000 122.100		LEEUWARDEN TWR 247.675 120.700		GND CTL 281.550	
TACAN LWD CH 94		APP COURSE 261°		FAF ALT 1200 FT		Descent GR	
				MDA 420		TDZE 4	
						ALS -	
						LDA 6562 FT	

NOTE:
● CIRCLING NOT AUTHORIZED SOUTH OF RWY 06-24

1°W
(2000)



CATEGORY	MINIMA ACCORDING TO PANS-OPS; NOT ACCORDING TO APATC-1				
	A	B	C	D	E
S-TACAN 27	420 -1600 416 (500-1.6)		420 -2000 416 (500-2.0)		420 -2400 416 (500-2.4)
CIRCLING ●	500 -1900 497 (500-1.9)	510 -2800 507 (600-2.8)	620 -3700 617 (700-3.7)	720 -4600 717 (800-4.6)	820 -6500 817 (900-6.5)

CHANGES: ALS

RNLAF 6 MAY 2010

TACAN RWY 27

53°13.52'N
005°45.15'E

LEEUWARDEN (EHLW)

**MIPS
INSTRUMENT APPROACH CHART**

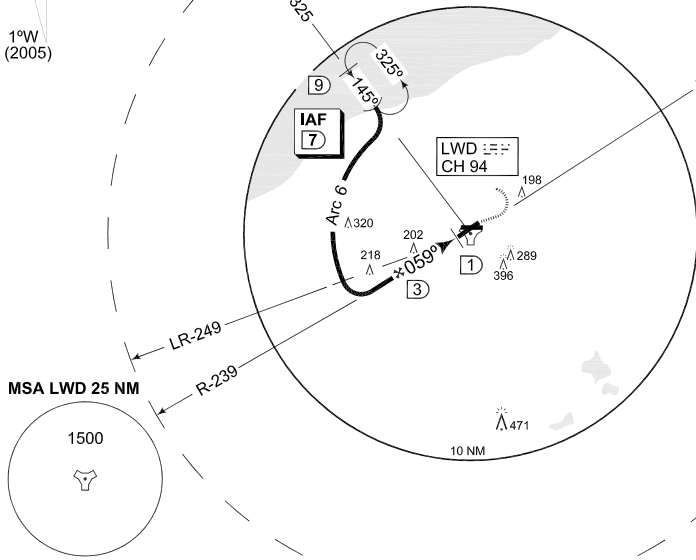
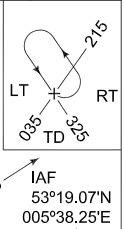
AD ELEV 3

**COPTER TACAN 059
LEEUWARDEN (EHLW)**

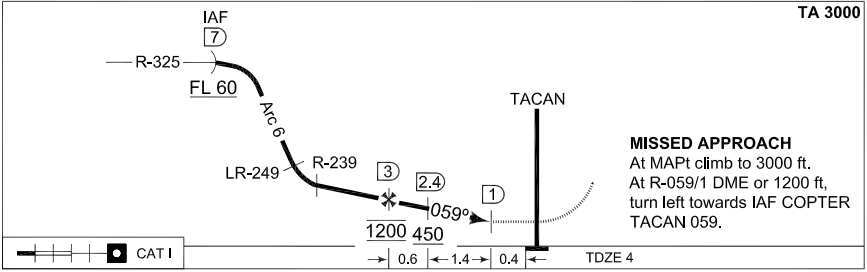
DUTCH MIL 264.325 132.350		RAPCON NORTH 337.000 122.100		LEEUWARDEN TWR 247.675 120.700		GND CTL 281.550	
TACAN LWD CH 94	APP COURSE 059°	FAF ALT 1200 FT	Descent GR	MDA 380	TDZE 4	ALS 2165 FT	LDA 8907 FT

NOTE:
① CIRCLING NOT AUTHORIZED
SOUTH OF RWY 06-24

1°W
(2005)



EMERG SAFE ALT 100 NM 2300



CATEGORY	A
COPTER TACAN 059	380 -400 376 (400-0.4)
CIRCLING ①	500 -1900 497 (500-1.9)

CHANGES: ALS

RNLAF 6 MAY 2010

COPTER TACAN 059

53°13.52'N
005°45.15'E

LEEUWARDEN (EHLW)

MIPS
INSTRUMENT APPROACH CHART

AD ELEV 3

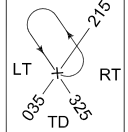
COPTER TACAN 233
LEEUWARDEN (EHLW)

DUTCH MIL 264.325 132.350		RAPCON NORTH 337.000 122.100		LEEUWARDEN TWR 247.675 120.700		GND CTL 281.550	
TACAN LWD CH 94	APP COURSE 233°	FAF ALT 1200 FT	Descent GR	MDA 380	TDZE 4	ALS 2362 FT	LDA 8646 FT

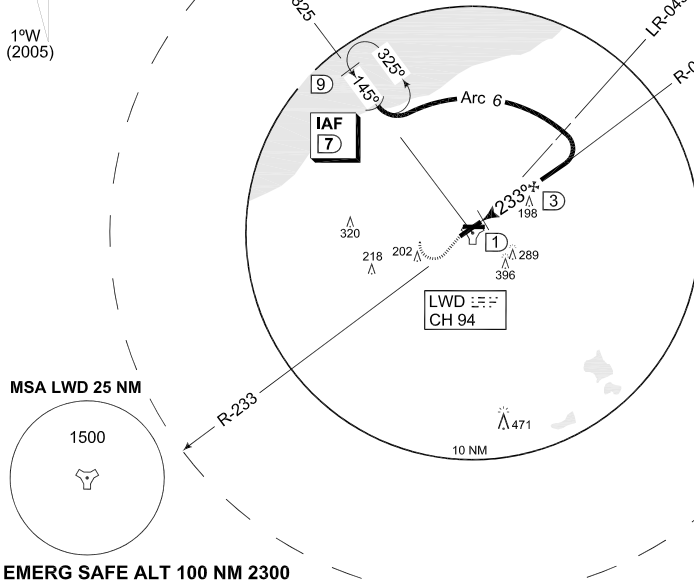
NOTE:

① CIRCLING NOT AUTHORIZED SOUTH OF RWY 06-24

1°W
(2005)



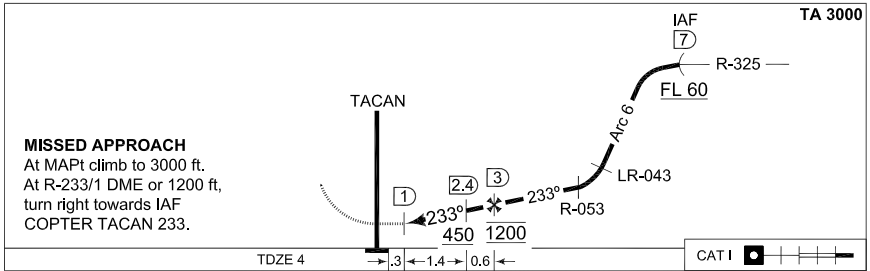
IAF
53°19.07'N
005°38.25'E



MSA LWD 25 NM

1500

EMERG SAFE ALT 100 NM 2300



MISSED APPROACH

At MAPt climb to 3000 ft.
At R-233/1 DME or 1200 ft,
turn right towards IAF
COPTER TACAN 233.

TDZE 4 → .3 | ← 1.4 → | ← 0.6 →

CAT I

CATEGORY	A
COPTER TACAN 233	380 -400 376 (400-0.4)
CIRCLING ①	500 -1900 497 (500-1.9)

CHANGES: ALS

RNLAF 6 MAY 2010

COPTER TACAN 233

53°13.52'N
005°45.15'E

LEEUWARDEN (EHLW)

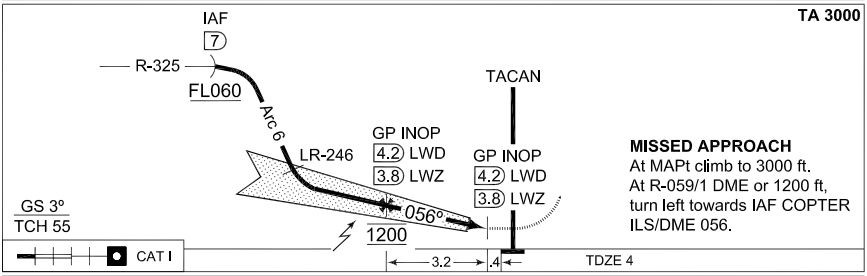
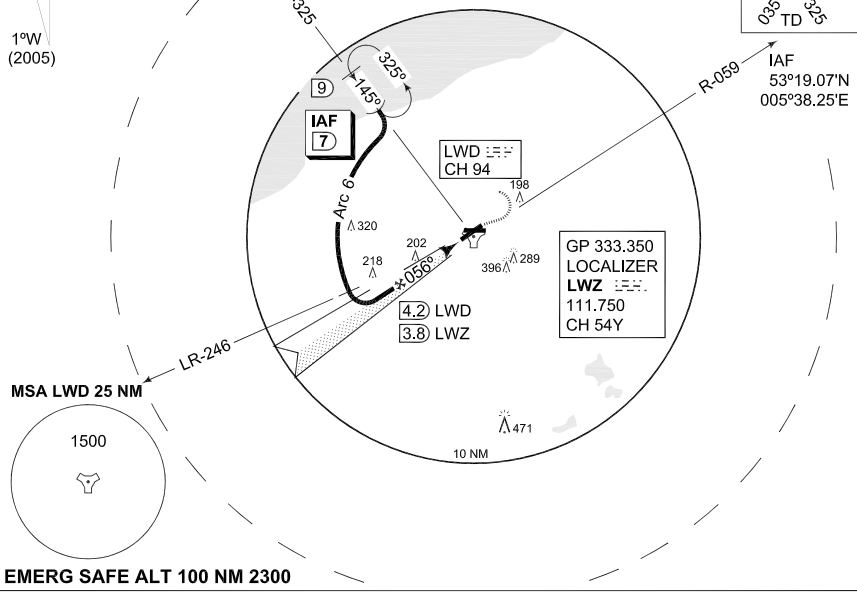
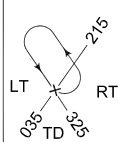
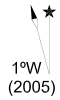
MIPS INSTRUMENT APPROACH CHART

AD ELEV 3

COPTER ILS/DME 056 LEEUWARDEN (EHLW)

DUTCH MIL 264.325 132.350		RAPCON NORTH 337.000 122.100		LEEUWARDEN TWR 247.675 120.700		GND CTL 281.550	
LOCALIZER / DME LWZ 111.750 / CH 54Y		APP COURSE 056°	GS INTCEPT ALT 1200 FT	GS 3°	DA 204	TDZE 4	LDA 2165 FT

NOTE:
 (1) CIRCLING NOT AUTHORIZED SOUTH OF RWY 06-24



CATEGORY	H
MINIMA ACCORDING TO PANS-OPS; NOT ACCORDING TO APATC-1	
S-ILS 056	204 -400 200 (200-0.4)
S-LOC 056	340 -400 336 (400-0.4)
CIRCLING (1)	500 -1900 497 (500-1.9)

CHANGES: ALS

RNLAF 6 MAY 2010

COPTER ILS/DME 056

53°13.52'N
005°45.15'E

LEEUWARDEN (EHLW)

**MIPS
INSTRUMENT APPROACH CHART**

AD ELEV 3

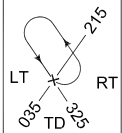
**COPTER ILS/DME 236
LEEUWARDEN (EHLW)**

DUTCH MIL 264.325 132.350		RAPCON NORTH 337.000 122.100		LEEUWARDEN TWR 247.675 120.700		GND CTL 281.550	
LOCALIZER / DME LWO 111.750 / CH 54Y		APP COURSE 236°	GS INTCEPT ALT 1200 FT	GS 3°	DA 204	TDZE 4	ALS LDA 2362 FT 8646 FT

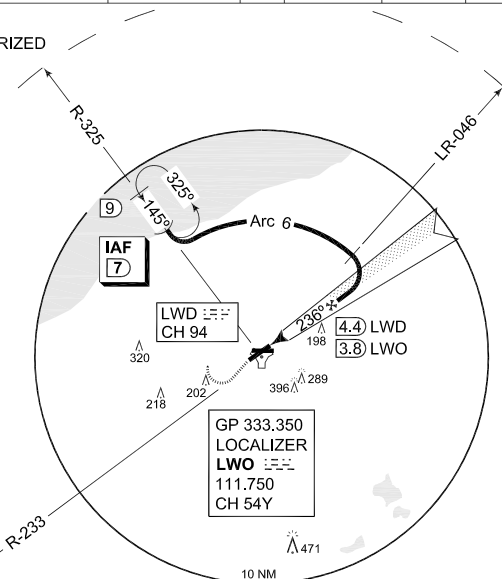
NOTE:

- ① CIRCLING NOT AUTHORIZED SOUTH OF RWY 06-24

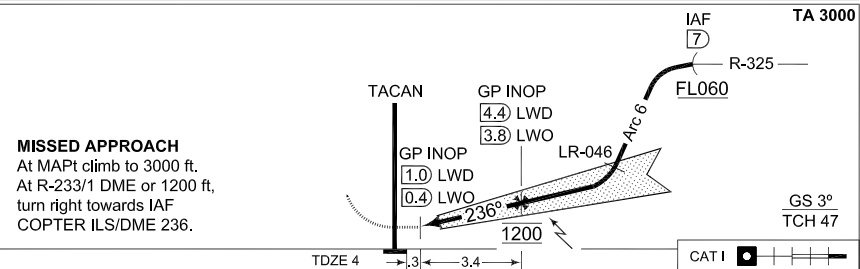
1°W
(2005)



IAF
53°19.07'N
005°38.25'E



EMERG SAFE ALT 100 NM 2300



MISSED APPROACH

At MAPt climb to 3000 ft.
At R-233/1 DME or 1200 ft,
turn right towards IAF
COPTER ILS/DME 236.

CATEGORY	H	
MINIMA ACCORDING TO PANS-OPS; NOT ACCORDING TO APATC-1		
S-ILS 236	204	-400 200 (200-0.4)
S-LOC 236	350	-400 346 (400-0.4)
CIRCLING ①	500	-1900 497 (500-1.9)

CHANGES: ALS

RNLAF 6 MAY 2010

COPTER ILS/DME 236

53°13.52'N
005°45.15'E

LEEUWARDEN (EHLW)