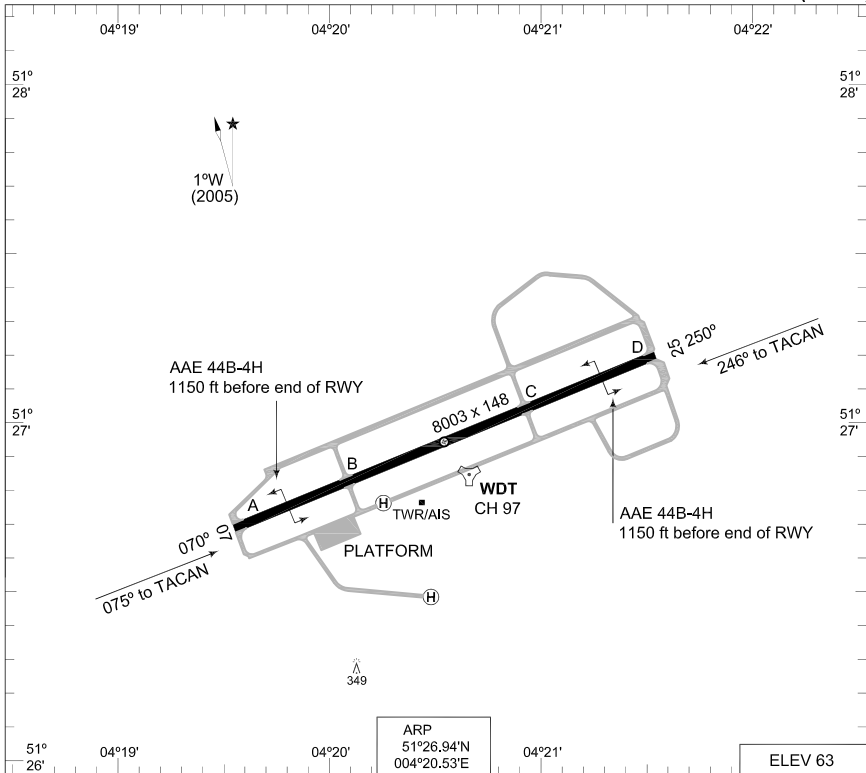


**MIPS
AERODROME LAYOUT/RADAR**

WOENSDRECHT (EHWO)



RWY	PCN	TORA	ASDA	TODA	LDA	PAPI	TDZE	THR PSN
25	51 R/C/W/T	8014	8014	8014	8014	3.0°	63	51°27.17'N 004°21.51'E
07	51 R/C/W/T	8014	8014	8014	8014		39	51°26.71'N 004°19.54'E

WOENSDRECHT TWR 339,000 120,425
 RAPCON WEST 281,475 123,575
 WOENSDRECHT ARRIVAL 378,650

	RWY	GS	TCH	OTCH	RPI	CAT	MINIMA
SRE	25 / 07					AB	450 -1100 387 (400-1.1)
						CDE	450 -1200 387 (400-1.2)
						AB	600 -1900 561 (600-1.9)
						C	600 -2400 561 (600-2.4)
						D	600 -2800 561 (600-2.8)
E	600 -3200 561 (600-3.2)						
CIR	25 / 07						NOT AUTHORIZED

CHANGES: PAPI, ALS, EDITORIAL

RNLAF 21 OCT 2010

AERODROME LAYOUT/RADAR

WOENSDRECHT (EHWO)

MIPS INSTRUMENT APPROACH CHART

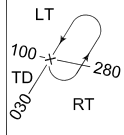
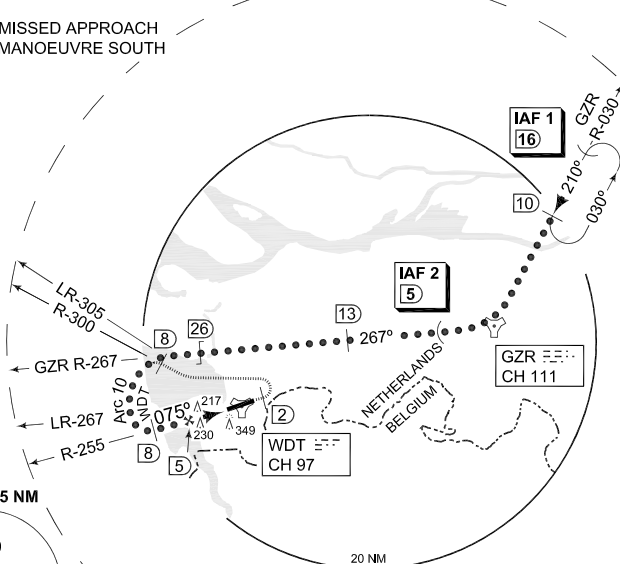
HI-TACAN RWY 07 WOENS DRECHT (EHWO)

AD ELEV 63

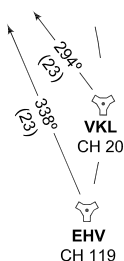
DUTCH MIL 264.325 132.350		RAPCON WEST 281.475 123.575		WOENS DRECHT TWR 339.000 120.425			
TACAN WDT CH 97	APP COURSE 075°	FAF ALT 1200 FT	Descent GR	MDA 600	TDZE 39	ALS -	LDA 8014 FT

CAUTION:
 ● DURING MISSED APPROACH
 DO NOT MANOEUVRE SOUTH
 OF R-070

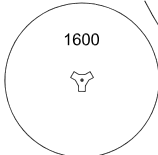
1°W
(2005)



IAF 1
51°48.40'N
005°08.20'E



MSA WDT 25 NM



MISSED APPROACH

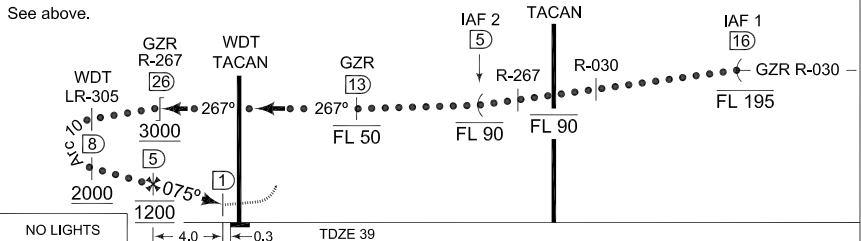
At MAPt climb to 1000 ft.
 At R-070/2 DME climb to 3000 ft and turn left to intercept R-300
 outbound. At 8 DME turn left to intercept ARC 10. Continue APP.

EMERG SAFE ALT 100 NM 4000

MISSED APPROACH

See above.

TA 3000



CATEGORY	A	B	C	D	E
S-TACAN 07	600 -1600 561 (600-1.6)		600 -2400 561 (600-2.4)	600 -2800 561 (600-2.8)	600 -3200 561 (600-3.2)
CIRCLING	NOT AUTHORIZED				

CHANGES: ALS, EDITORIAL

RNLAF 26 AUG 2010

HI-TACAN RWY 07

51°26.94'N
004°20.53'E

WOENS DRECHT (EHWO)

**MIPS
INSTRUMENT APPROACH CHART**

**TACAN ILS/DME RWY 07
WOENSDRECHT (EHWO)**

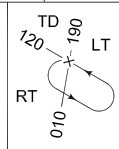
AD ELEV 63

DUTCH MIL 264.325 132.350		RAPCON WEST 281.475 123.575		WOENSDRECHT TWR 339.000 120.425						
TACAN / LOCALIZER / DME WDT CH 97 / WZ 108.150 / CH 18Y			APP COURSE 071°		GS INTCP ALT 1500 FT	GS 3°	DA SEE CAT	TDZE 39	ALS -	LDA 8014 FT

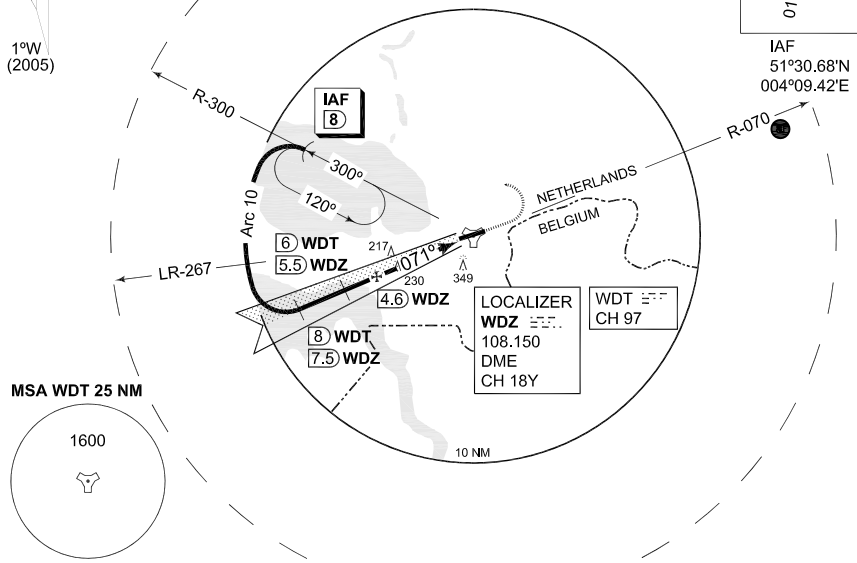
CAUTION:

● DURING MISSED APPROACH
DO NOT MANOEUVRE SOUTH
OF R-070

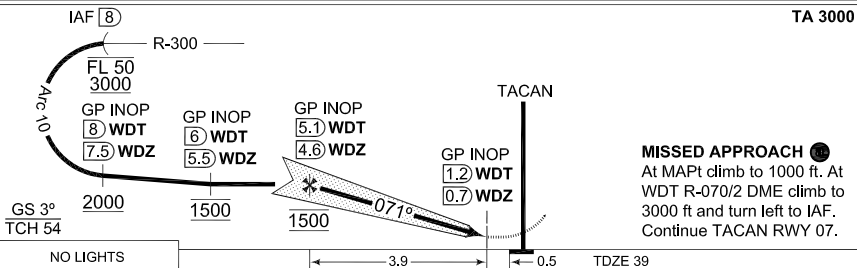
1°W
(2005)



IAF
51°30.68'N
004°09.42'E



EMERG SAFE ALT 100 NM 4000



MISSED APPROACH ●
At MAPT climb to 1000 ft. At
WDT R-070/2 DME climb to
3000 ft and turn left to IAF.
Continue TACAN RWY 07.

NO LIGHTS	3.9			TDZE 39	
CATEGORY	A	B	C	D	E
S-ILS 07	239 -1200 200 (200-1.2)	246 -1600 207 (300-1.6)	256 -1600 217 (300-1.6)	266 -1600 227 (300-1.6)	NA
S-LOC 07	480 -1600 441 (500-1.6)		480 -2000 441 (500-2.0)	480 -2400 441 (500-2.4)	NA

TACAN ILS/DME RWY 07

51°26.94'N
004°20.53'E

WOENSDRECHT (EHWO)

CHANGES: ALS, EDITORIAL

RNLAF 26 AUG 2010

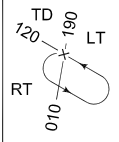
**MIPS
INSTRUMENT APPROACH CHART**

**TACAN RWY 07
WOENSDRECHT (EHWO)**

AD ELEV 63

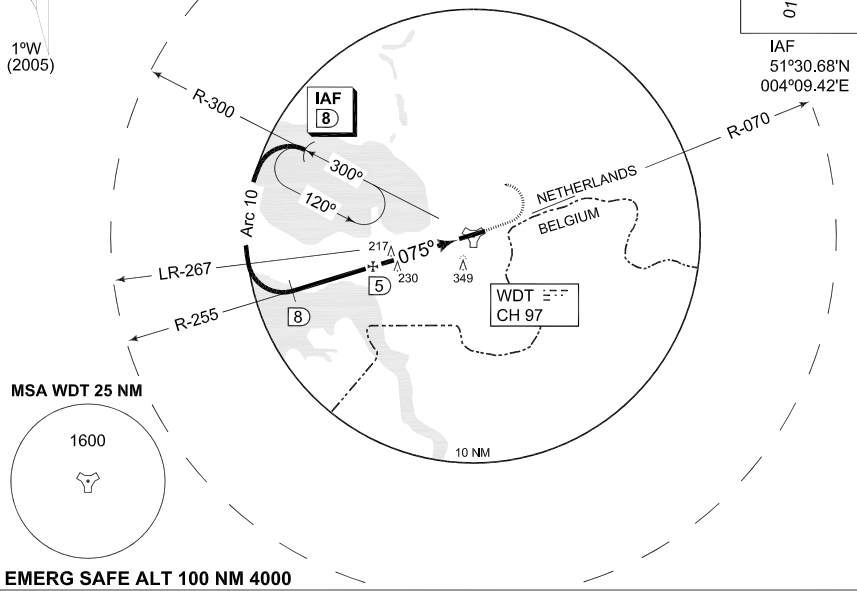
DUTCH MIL 264.325 132.350		RAPCON WEST 281.475 123.575		WOENSDRECHT TWR 339.000 120.425			
TACAN WDT CH 97	APP COURSE 075°	FAF ALT 1200 FT	Descent GR	MDA 600	TDZE	ALS -	LDA 8014 FT

CAUTION:
● DURING MISSED APPROACH
DO NOT MANOEUVRE SOUTH
OF R-070

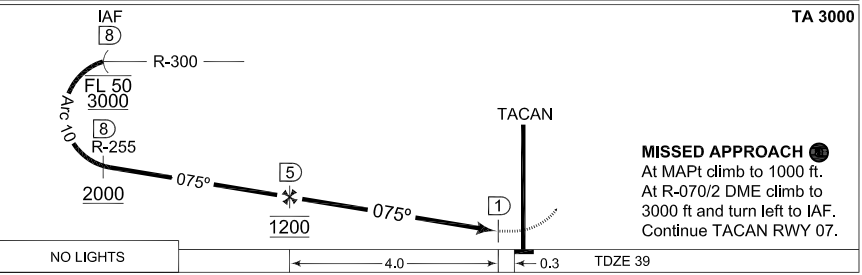


IAF
51°30.68'N
004°09.42'E

1°W
(2005)



EMERG SAFE ALT 100 NM 4000



NO LIGHTS	4.0		0.3	TDZE 39	
CATEGORY	A	B	C	D	E
S-TACAN 07	600 -1600 561 (600-1.6)		600 -2400 561 (600-2.4)	600 -2800 561 (600-2.8)	600 -3200 561 (600-3.2)
CIRCLING	NOT AUTHORIZED				

CHANGES: ALS, EDITORIAL

RNLAF 28 AUG 2010

TACAN RWY 07

51°26.94'N
004°20.53'E

WOENSDRECHT (EHWO)

**MIPS
INSTRUMENT APPROACH CHART**

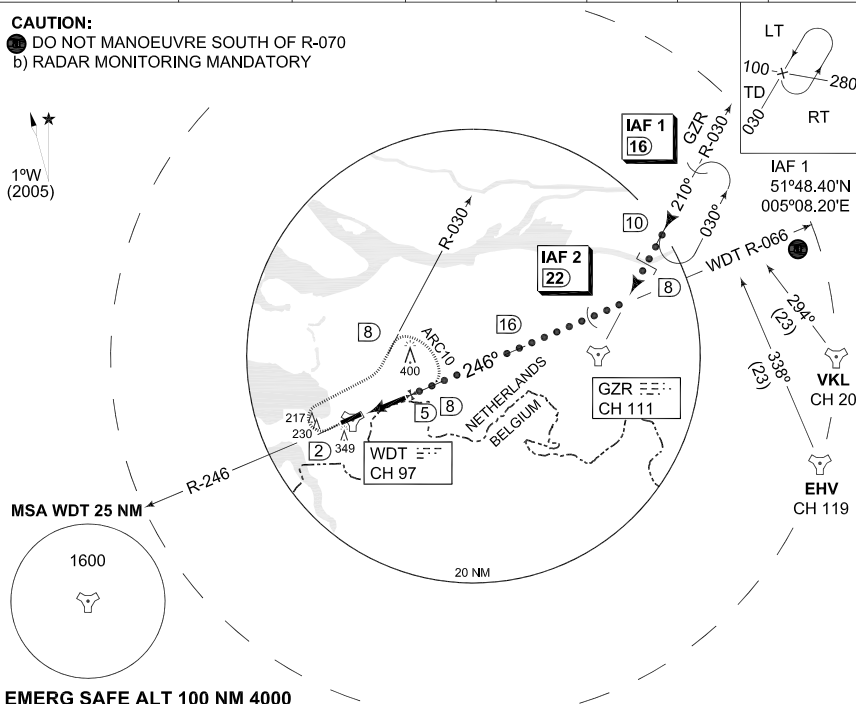
**HI-TACAN RWY 25
WOENSDRECHT (EHWO)**

AD ELEV 63

DUTCH MIL 264.325 132.350		RAPCON WEST 281.475 123.575		WOENSDRECHT TWR 339.000 120.425			
TACAN WDT CH 97	APP COURSE 246°	FAF ALT 1200 FT	Descent GR	MDA 440	TDZE 63	ALS 2953 FT	LDA 8014 FT

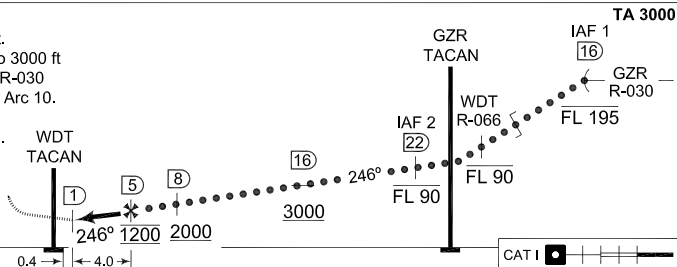
CAUTION:

- a) DO NOT MANOEUVRE SOUTH OF R-070
- b) RADAR MONITORING MANDATORY



MISSED APPROACH

At MAPT climb to 1000 ft.
At R-246/2 DME climb to 3000 ft and turn right. Intercept R-030 outbound. Intercept R/H Arc 10. Descent to 2000 ft. Intercept R-066 inbound. Continue APP.



CATEGORY	A	B	C	D	E
S-TACAN 25	440 -800 377 (400-0.8)			440 -1200 377 (400-1.2)	
CIRCLING	NOT AUTHORIZED				

HI-TACAN RWY 25

51°26.94'N
004°20.53'E

WOENSDRECHT (EHWO)

CHANGES: ALS, EDITORIAL

RNLAF 28 AUG 2010

**MIPS
INSTRUMENT APPROACH CHART**

**TACAN ILS/DME RWY 25
WOENDRECHT (EHWO)**

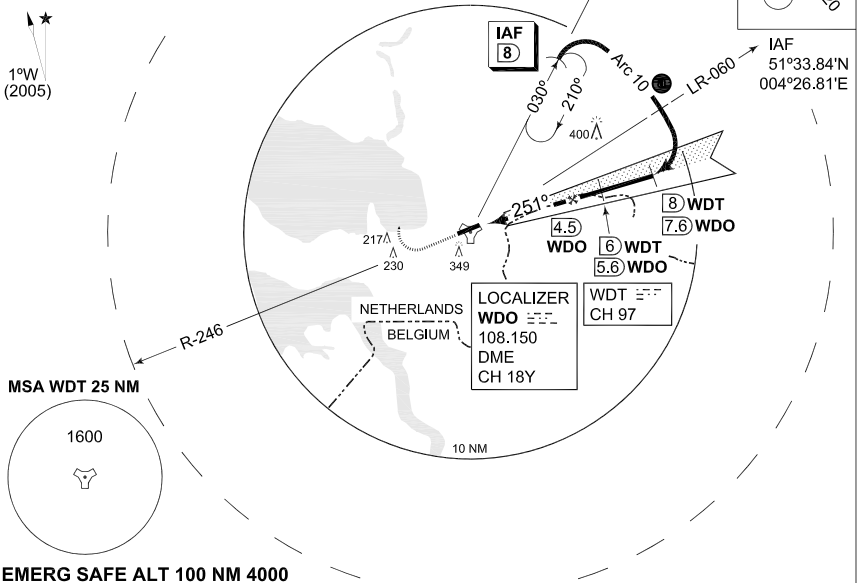
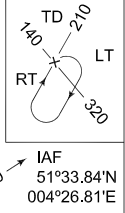
AD ELEV 63

DUTCH MIL 264.325 132.350		RAPCON WEST 281.475 123.575		WOENDRECHT TWR 339.000 120.425					
TACAN / LOCALIZER / DME WDT CH 97/WDO 108.150/CH 18Y			APP COURSE 251°	GS INTCP ALT 1500 FT	GS 3°	DA SEE CAT	TDZE 63	ALS 2953 FT	LDA 8014 FT

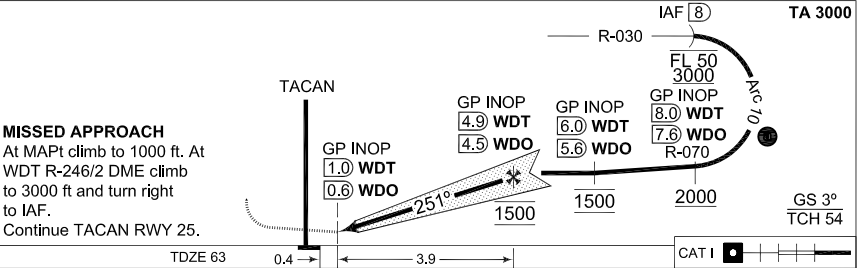
CAUTION:

- WHEN TURNING TOWARDS THE ARC, DO NOT EXCEED 10 DME
- b) RADAR MONITORING MANDATORY

1°W
(2005)



EMERG SAFE ALT 100 NM 4000



MISSED APPROACH

At MAPt climb to 1000 ft. At WDT R-246/2 DME climb to 3000 ft and turn right to IAF. Continue TACAN RWY 25.

CATEGORY	A	B	C	D	E
S-ILS 25	263 -800 200 (200-0.8)			268 -800 205 (300-0.8)	NA
S-LOC 25	440 -800 377 (400-0.8)			440 -1200 377 (400-1.2)	NA

TACAN ILS/DME RWY 25

51°26.94'N
004°20.53'E

WOENDRECHT (EHWO)

CHANGES: ALS, EDITORIAL

RNLAF 26 AUG 2010

**MIPS
INSTRUMENT APPROACH CHART**

**TACAN RWY 25
WOENSDRÉCHT (EHWO)**

AD ELEV 63

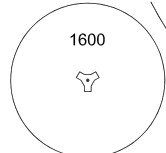
DUTCH MIL 264.325 132.350		RAPCON WEST 281.475 123.575		WOENSDRÉCHT TWR 339.000 120.425			
TACAN WDT CH 97	APP COURSE 246°	FAF ALT 1200 FT	Descent GR	MDA 440	TDZE 63	ALS 2953 FT	LDA 8014 FT

CAUTION:

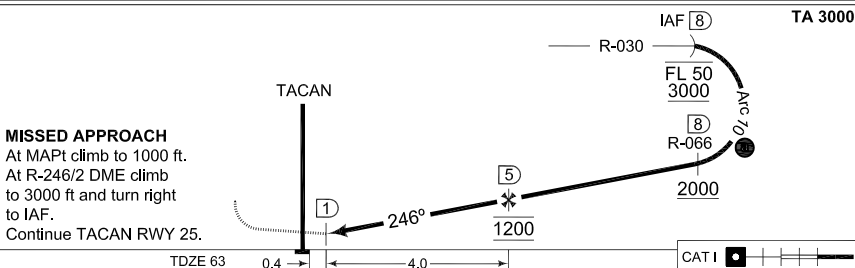
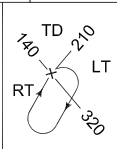
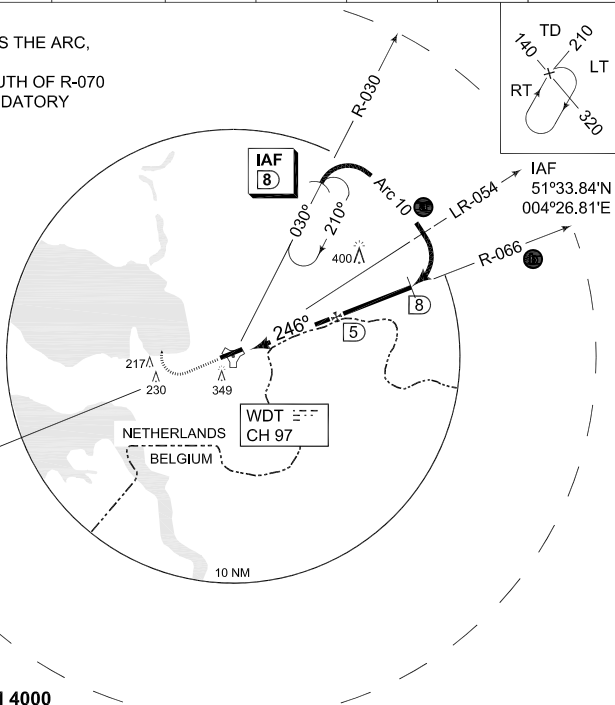
- WHEN TURNING TOWARDS THE ARC, DO NOT EXCEED 10 DME
- DO NOT MANOEUVRE SOUTH OF R-070
- c) RADAR MONITORING MANDATORY

1°W
(2005)

MSA WDT 25 NM



EMERG SAFE ALT 100 NM 4000



MISSED APPROACH

At MAPt climb to 1000 ft.
At R-246/2 DME climb to 3000 ft and turn right to IAF.
Continue TACAN RWY 25.

TDZE 63 0.4 → | ← 4.0 | CAT I

CATEGORY	A	B	C	D	E
S-TACAN 25	440 -800 377 (400-0.8)			440 -1200 377 (400-1.2)	
CIRCLING	NOT AUTHORIZED				

CHANGES: ALS, EDITORIAL

RNLAF 28 AUG 2010

TACAN RWY 25

51°26.94'N
004°20.53'E

WOENSDRÉCHT (EHWO)