

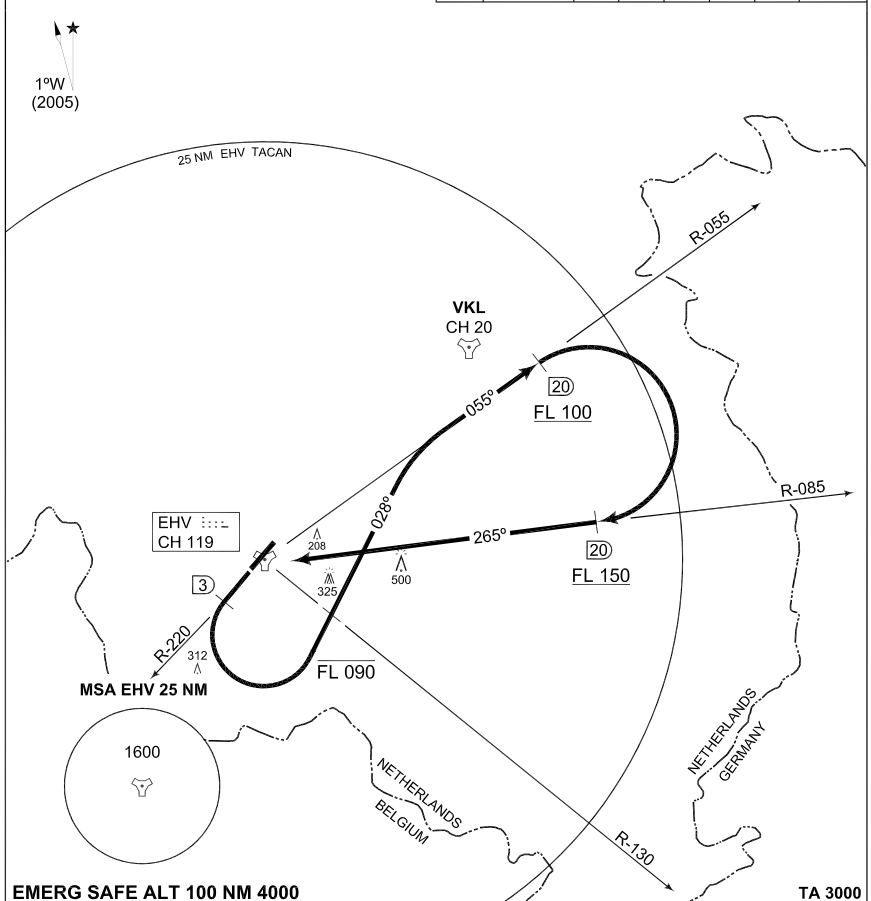
**TERPS  
INSTRUMENT DEPARTURE CHART**

**EH1  
EINDHOVEN (EHEH)**

AD ELEV 74

EINDHOVEN (EHEH)

GND CTL		EINDHOVEN TWR		RAPCON SOUTH			DUTCH MIL		
369.250	121.925	281.150	131.000	379.925	123.175	264.325	132.350		
RWY <b>22</b>	Knots	120	180	240	300	360	to		
	V/V (fpm)	500	750	1000	1250	1500	<b>3000 ft</b>		
	V/V (fpm)	600	900	1200	1500	1800	<b>FL 150</b>		



**EMERG SAFE ALT 100 NM 4000** **TA 3000**

**EINDHOVEN 1 (RWY 22)**

- Climb straight ahead.
- At 3 DME and at least at 1000 ft from Eindhoven TACAN turn left, heading 028° to intercept R-055 outbound.
- FLIGHT LEVEL RESTRICTION: Cross R-130 at FL 090 or below.
- At 20 DME turn right to intercept R-085 inbound Eindhoven TACAN.
- FLIGHT LEVEL RESTRICTION: Pass 20 DME/R-055 at FL 100 or above, intercept R-085 at FL 150 or above.

CHANGES: EDITORIAL

RNLAF 6 MAY 2010

**EH1**

51°27.01'N  
005°22.47'E

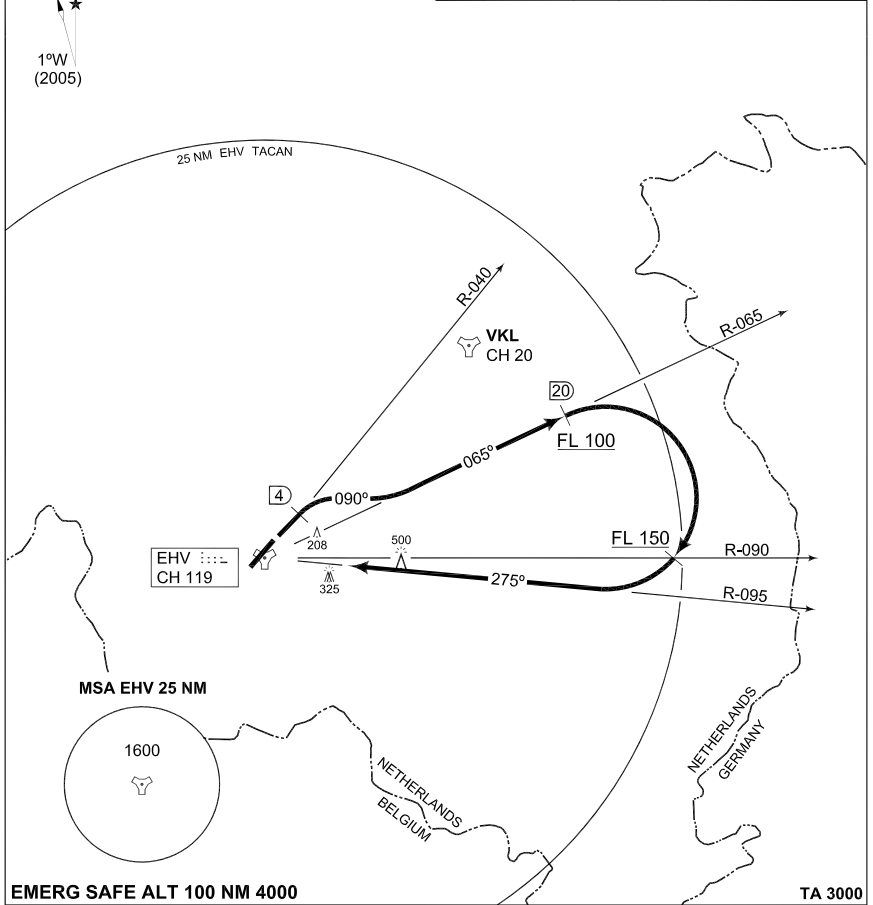
**EINDHOVEN (EHEH)**

**TERPS  
INSTRUMENT DEPARTURE CHART**

**EH3  
EINDHOVEN (EHEH)**

AD ELEV 74

GND CTL		EINDHOVEN TWR		RAPCON SOUTH			DUTCH MIL		
369.250	121.925	281.150	131.000	379.925	123.175	264.325	132.350		
RWY	Knots	120	180	240	300	360	to		
04	V/V (fpm)	960	1440	1920	2400	2880	<b>FL 100</b>		
	V/V (fpm)	720	1080	1440	1800	2160	<b>FL 150</b>		



**EINDHOVEN 3 (RWY 04)**

- Climb straight ahead.
- At 4 DME and at least at 1000 ft from Eindhoven TACAN turn right, heading 090° to intercept R-065 outbound.
- At 20 DME turn right to intercept R-095 inbound Eindhoven TACAN.

**FLIGHT LEVEL RESTRICTION:** Pass 20 DME/R-065 at FL 100 or above, cross R-090 at FL 150 or above.

**NOTE:** ATC required minimum climb rate exceeds 300 ft/NM.

CHANGES: EDITORIAL

RNLAF 6 MAY 2010