

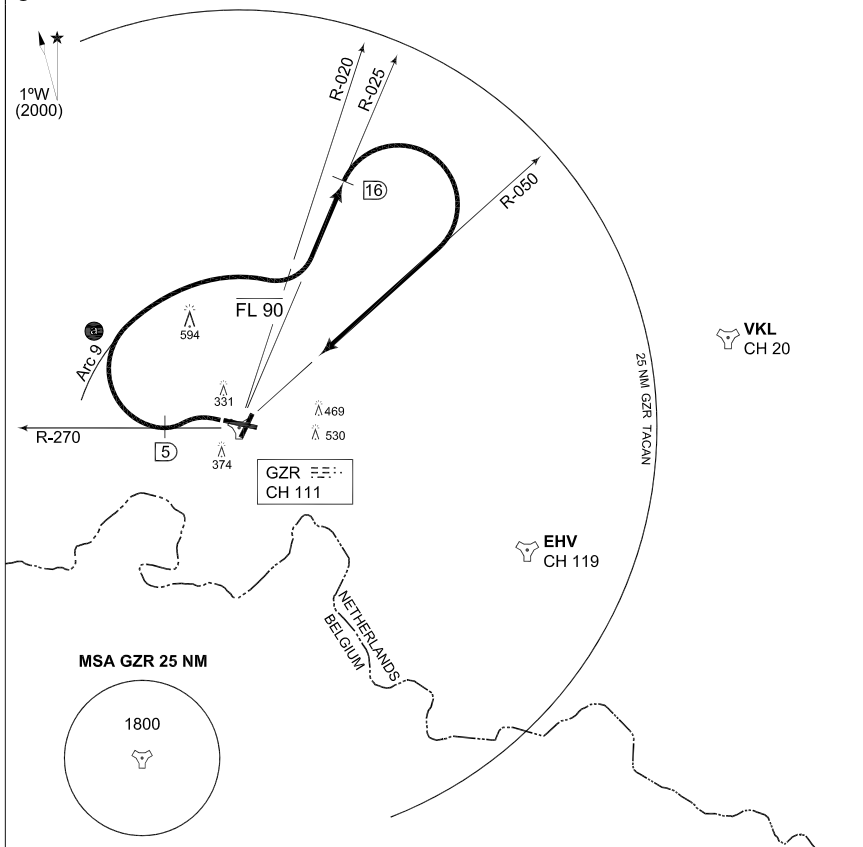
**TERPS
INSTRUMENT DEPARTURE CHART**

**GR1
GILZE-RIJEN (EHGR)**

AD ELEV 49

GILZE-RIJEN TWR 369.500 125.325		RAPCON WEST 281.475 123.575		DUTCH MIL 264.325 132.350							
				RWY 28	Knots V/V (fpm)	120 480	180 720	240 960	300 1200	360 1440	to 150 ft

NOTE:
● DO NOT EXCEED 10 DME



EMERG SAFE ALT 100 NM 4000

TA 3000

CHANGE: EDITORIAL

GILZE-RIJEN 1
(RWY 28)

- At field boundary turn left to intercept R-270 outbound, level off at FL 90.
- At 5 DME turn right to intercept Arc 9.
- Intercept R-025 outbound, when crossing R-020 continue climb.
- At 16 DME turn right to intercept R-050 inbound.

GR1

51°34.04'N
004°55.91'E

GILZE-RIJEN (EHGR)

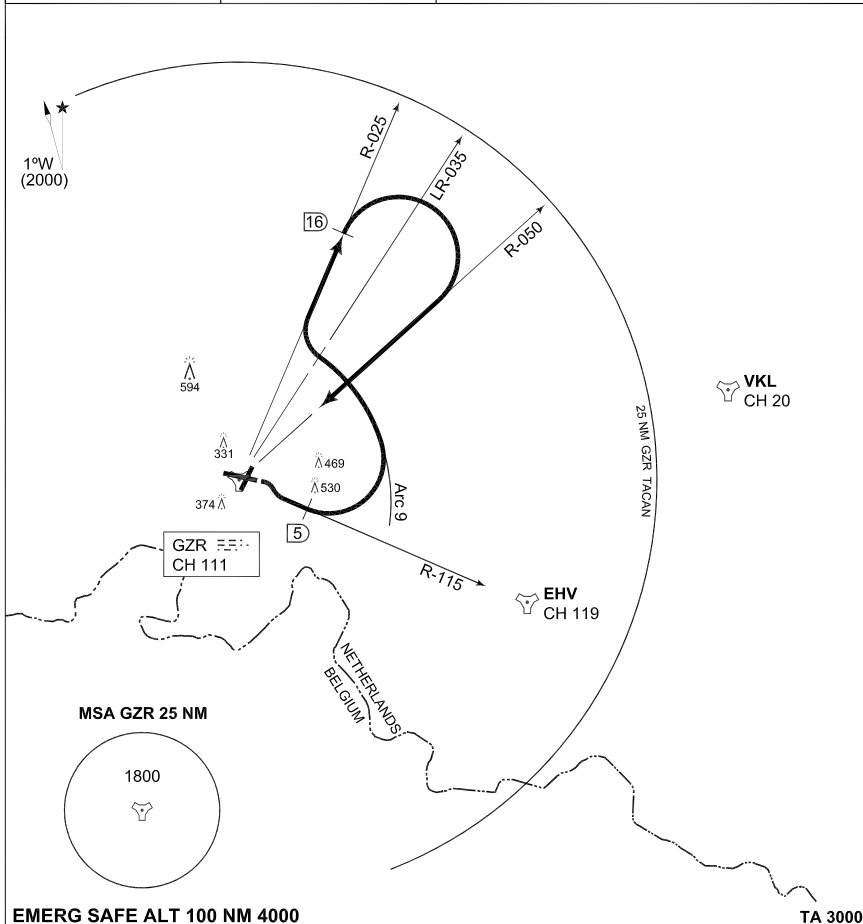
RNLAF 6 MAY 2010

**TERPS
INSTRUMENT DEPARTURE CHART**

**GR3
GILZE-RIJEN (EHGR)**

AD ELEV 49

GILZE-RIJEN TWR		RAPCON WEST		DUTCH MIL	
369.500	125.325	281.475	123.575	264.325	132.350



EMERG SAFE ALT 100 NM 4000

TA 3000

CHANGES: EDITORIAL

GILZE-RIJEN 3
(RWY 10)

- At field boundary turn right to intercept R-115 outbound.
- At 5 DME turn left to intercept Arc 9.
- When crossing R-035 turn right to intercept R-025 outbound.
- At 16 DME turn right to intercept R-050 inbound.

GR3

51°34.04'N
004°55.91'E

GILZE-RIJEN (EHGR)

RNLAF 6 MAY 2010