

**TERPS
INSTRUMENT DEPARTURE CHART**

AD ELEV 63

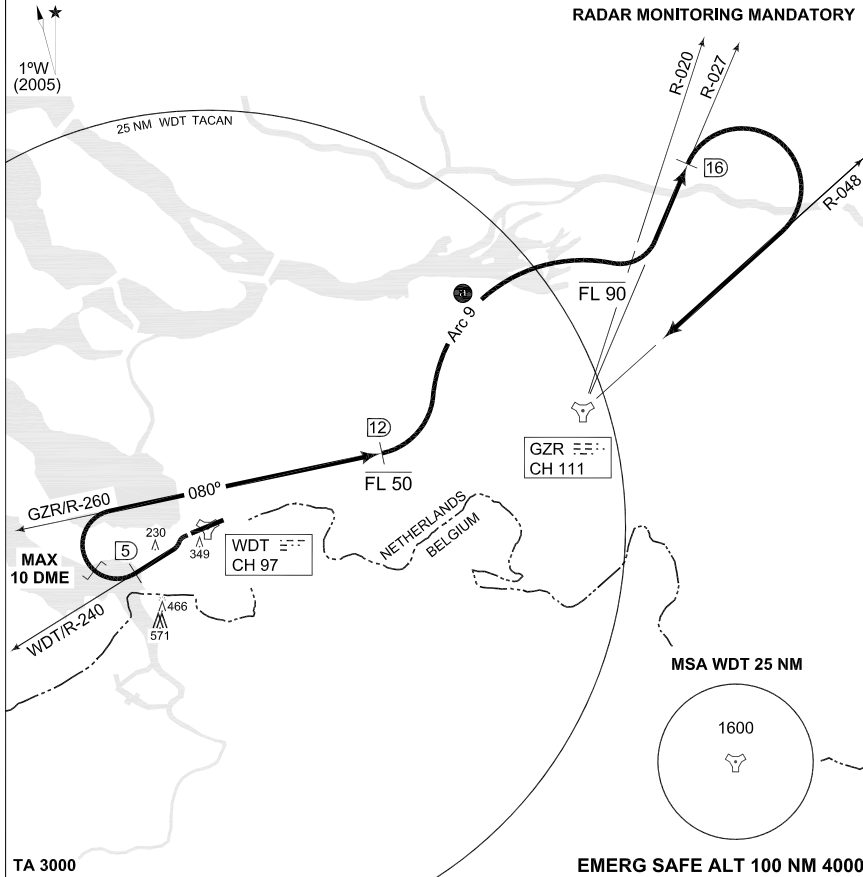
**WO1
WOENSDRECHT (EHWO)**

WOENSDRECHT TWR 339.000 120.425		RAPCON WEST 281.475 123.575		DUTCH MIL 264.325 132.350							
				RWY	Knots	120	180	240	300	360	to
				25	V/V (fpm)	360	540	720	900	1080	114 ft

NOTE:

☉ WHEN IN ARC 9, DO NOT EXCEED 10 DME

RADAR MONITORING MANDATORY



CAUTION: Dep end crossing height 78 ft due to obstacle 230 ft right of centerline. TORA 8014.

WOENSDRECHT 1
(RWY 25)

- At field boundary turn left and intercept R-240 outbound.
- At 5 DME turn right to intercept GZR R-260 inbound, level off at FL 50.
- At R-260/12 DME turn left to intercept Arc 9, climb to FL 90. ☉
- Intercept R-027 outbound, when crossing GZR R-020 continue climb.
- At 16 DME turn right to intercept R-048 inbound.

NOTE: Departure will be controlled by Rapcon West.

CHANGES: EDITORIAL

RNLAF 6 MAY 2010

WO1

51°26.94'N
004°20.53'E

WOENSDRECHT (EHWO)

MIPS
INSTRUMENT DEPARTURE CHART

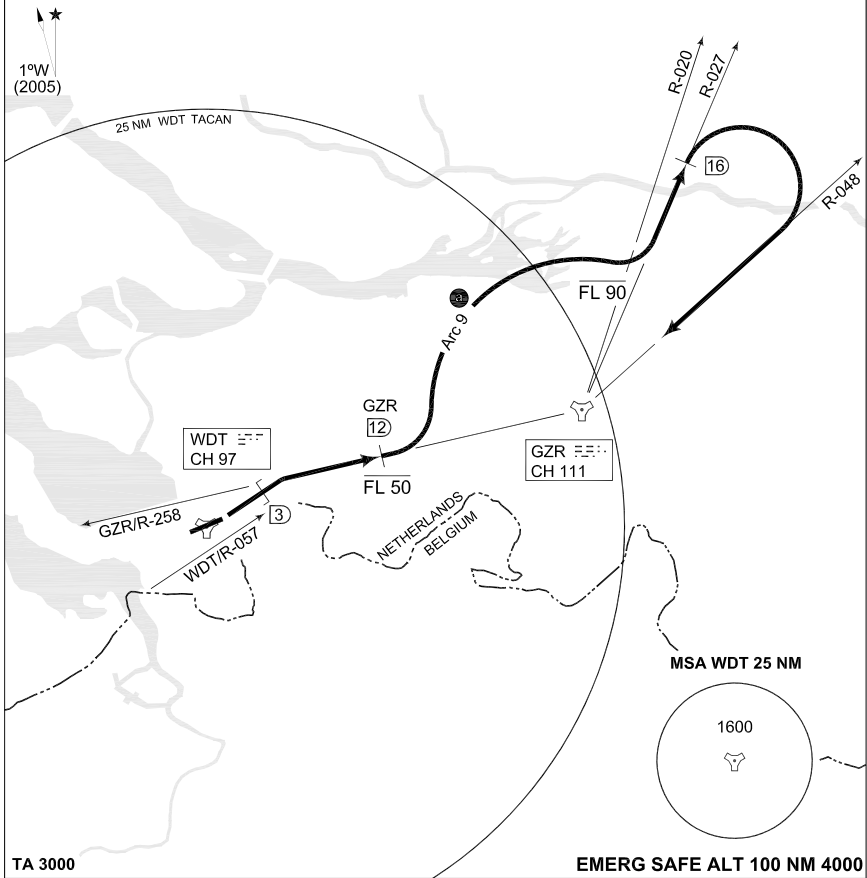
WO3
WOENSDRECHT (EHWO)

AD ELEV 63

WOENSDRECHT TWR		RAPCON WEST		DUTCH MIL	
339.000	120.425	281.475	123.575	264.325	132.350

NOTE:

Ⓜ WHEN IN ARC 9, DO NOT EXCEED 10 DME



TA 3000

EMERG SAFE ALT 100 NM 4000

WOENSDRECHT 3
(RWY 07)

- At field boundary turn left to intercept WDT R-057 outbound to intercept GZR R-258 inbound.
- Level off at FL 50.
- At GZR R-258/12 DME turn left to intercept Arc 9, climb to FL 90. Ⓜ
- When passing GZR R-020 continue climb, intercept GZR R-027 outbound.
- At 16 DME turn right to intercept R-048 inbound.

NOTE:

Departure will be controlled by Rapcon West.

CHANGES: EDITORIAL

RNLAF 6 MAY 2010

WO3

51°26.94'N
004°20.53'E

WOENSDRECHT (EHWO)