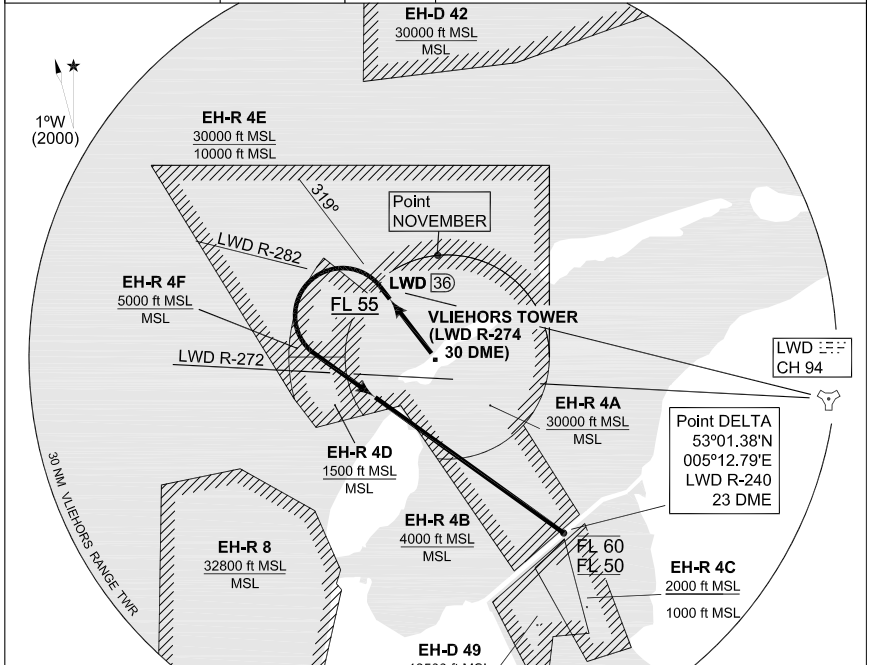




**TERPS  
SPECIAL DEPARTURE CHART**

**VL 2  
VLIEHORS RANGE**

CORNFIELD 279.000	DUTCH MIL 264.325 132.350	
----------------------	------------------------------	--



**NOTES:**

- Upper limit of Vliehors Range is 30000 ft MSL unless cleared by Dutch Mil;
- GCA/TACAN traffic into EHLW may cross at or near point Delta at or above 2000 ft MSL.

VL 2 MEDIUM LEVEL TEARDROP IFR DEPARTURE	Following final delivery, proceed outbound on heading 319° from the tower, climbing to max. FL 060. When passing LWD R-282 FL 55 has to be reached and turn left inbound point DELTA (LWD TACAN R-240/23 DME). Contact Dutch Mil when established on the departure and cleared to leave the range frequency. Contact with Dutch Mil shall be established within the boundary of the EH-R 4A. Flight members will follow in sequence.
IMMELMANN IFR DEPARTURE	Departing aircraft may perform an Immelmann manoeuvre (under VMC only) to become established inbound on LWD R-272. Further see above.
LOW LEVEL IFR DEPARTURE (Northern based FRG acft only)	Leave via point NOVEMBER to 53°42'N 006°52'E at 3000 ft MSL (day) or 2000 ft MSL (night). Stay clear of all islands by 2 NM and do not leave the Range airspace until cleared by Dutch Mil.
HIGH LEVEL IFR DEPARTURE	To leave the Vliehors Range between 20000 ft and 30000 ft AMSL, stay within the lateral limits of the Range until cleared by Dutch Mil (CH 6). Only when proceeding inbound the Dutch TRA's a direct call to 'Bandbox Main' is approved. Also stay within the lateral limits of the Range until cleared by 'Bandbox'.

CHANGES: EDITORIAL

RNLAF 06 MAY 2010