

AD 2. AERODROMES

DEELEN

EHDL AD 2.1 Aerodrome location indicator and name

EHDL - Deelen

EHDL AD 2.2 Geographical and administrative data

1	ARP	52°03'35.02"N 005°52'18.97"E
2	Direction and distance from city	340° MAG/4.5 NM ARNHEM
3	Elevation/Reference temperature	+ 158 ft AMSL/22.0° C (AUG)
4	MAG VAR/Annual change	1°06'E (JAN 2015)/9'E
5	AD operating authority Postal address Visitors' address Telephone Telefax AFTN	RNLAF DHC Vliegbasis Gilze-Rijen attn C931 tav Vliegbasis Deelen MPC 89A P.O. Box 8762 4820 BB Breda Koningsweg 30 F 6816 TG ARNHEM +31(0)346 335901/902 +31(0)26 3531325 No
6	Types of TFC permitted (IFR/VFR)	IFR/VFR
7	Remarks	Nil

EHDL AD 2.3 Operational hours

1	AD OPR HR	OPN for RNLAF HEL at various times
2	Customs and immigration	48 HR PN
3	Health and sanitation	O/R
4	AIS Briefing office	Via EHGR
5	MET Briefing Office	Via EHGR
6	ATS	HO
7	Security	HO
8	Remarks	PPR 24 HRS

EHDL AD 2.4 Handling services and facilities

Not AVBL

EHDL AD 2.5 Passenger facilities

1	Remain overnight	Nil
2	Medical facilities	O/R
3	Remarks	Nil

EHDL AD 2.6 Rescue and fire fighting services

1	AD category for fire fighting	NATO CAT 7 O/R
2	Remarks	Nil

EHDL AD 2.7 Seasonal availability - clearing

Not AVBL

EHDL AD 2.8 Aprons, taxiways and check locations/positions data

1	Apron surface and strength	Concrete, LCN 30 (PCN not AVBL)
2	TWY width, surface and strength	Width 36 ft, tarmac/concrete, LCN 30 (PCN not AVBL)
3	Remarks	Nil

EHDL AD 2.9 Surface movement guidance and control system and markings

According STANAG 3158

1	Remarks	Nil
---	---------	-----

EHDL AD 2.10 Aerodrome obstacles

See Aerodrome Chart

EHDL AD 2.11 Meteorological information provided

1	Associated MET Office	Joint MET Group
2	Hours of service MET Office outside hours	0700/1500 (0600/1400) Joint MET Group
3	Office responsible for TAF preparation Periods of validity	Joint MET Group 9 HRS
4	Type of landing forecast Interval of issuance	Colourstate trend Hourly
5	Flight documentation Language(s) used	Charts, abbreviated plain language text English/Dutch
6	Charts and other information AVBL for briefing or consultation	SWC, prognostic upper air chart, radar satellite images
7	Supplementary equipment AVBL for providing information	Nil
8	Remarks	Tel. Joint MET Group: +31(0)164 693111

EHDL AD 2.12 Runway physical characteristics

1	RWY dimensions/a-gear	See Aerodrome Chart. Values in ft.
2	RWY surface	Tarmac/concrete
3	RWY strength	LCN 30 (PCN not AVBL)

EHDL AD 2.13 Declared distances

See Aerodrome Chart. Values in ft.

EHDL AD 2.14 Approach and runway lighting

According to STANAG 3316		
1	Approach lighting	RWY 20: CAT I. 783 m RWY 02: Nil
2	RWY lighting	RWY 20 VHI/VCL, RWY 02 VHI
3	Remarks	Nil

EHDL AD 2.15 Other lighting, secondary power supply

1	LDI	Nil
2	TWY edge lighting	Nil
3	Emergency RWY lighting	Nil
4	Emergency TWY edge lighting	Nil
5	Secondary power supply/switch-over	AVBL, switch over time 15 seconds
6	Remarks	Nil

EHDL AD 2.16 Helicopter landing area

1	Location	Helisquare (STANAG 3619) is situated at the beginning of RWY20. Four helisquares (non-STANAG) are situated in main grass area east of RWY 20/02. See Aerodrome Chart
2	Marking	Daylight marking
3	Lighting	Yes, according STANAG 3652 (except two)
4	Remarks	Nil

EHDL AD 2.17 Air traffic services airspace

1	Designation and lateral limits	Deelen control zone 52°09'57.93"N 005°50'23.30"E; 52°12'05.96"N 005°51'26.74"E; 52°10'20.78"N 006°00'46.06"E; 52°08'12.82"N 005°59'42.21"E; along clockwise arc (radius 6.5 NM, centre 52°03'35.02"N 005°52'18.97"E) to 51°57'12.08"N 005°54'14.21"E; 51°55'03.92"N 005°53'10.91"E; 51°56'48.76"N 005°43'54.59"E; 51°58'56.70"N 005°44'57.34"E; along clockwise arc (radius 6.5 NM, centre 52°03'35.02"N 005°52'18.97"E) to point of origin.
2	Vertical limits	GND to 3000 ft AMSL
3	Airspace classification	D
4	ATS unit call sign Language(s)	Contact initially Deelen TWR, outside HO Dutch Mil Info FREQ 132.350 MHz. English
5	Transition altitude	IFR: 3000 ft AMSL; VFR: 3500 ft AMSL
6	Remarks	Nil

EHDL AD 2.18 Air traffic services communication facilities

STATION/ SERVICE	CALL SIGN OR IDENTIFICATION	FREQUENCY MHz	HOURS	REMARKS
1	2	3	4	5
TWR	As appropriate Deelen Tower	121.500 243.000 129.930 ^{*)} 122.100 ^{**)} 371.475 ^{*)} 257.800 ^{**)}	HO HO	Emergency FREQ for all services ^{*)} Primary FREQ ^{**)} O/R
APP	RAPCON West	123.580 281.475	HO	Radar equipped

EHDL AD 2.19 Radio navigation and landing aids

FACILITY	ID	CHANNEL FREQ.	HOURS	CO-ORD.	RANGE/ ALTITUDE	REMARKS
1	2	3	4	5	6	7
TACAN	DLN	CH 59X	H24	52°03'26.45"N 005°52'21.47"E	40 NM/25000 ft	FREQ protected

EHDL AD 2.20 Local traffic regulations

Glider- and Light ACFT flying

Glider- and model flying during weekend SR/SS in the Deelen CTR. Within the Deelen CTR the glidersite Terlet is located. Daily SR/SS the areas Terlet-A, Terlet-B, Terlet-C and Terlet-D (see Local map) can be activated. Intensive glider flying may be expected during activation of these areas.

EHDL AD 2.21 Noise abatement procedures

To be developed.

EHDL AD 2.22 Flight procedures

IFR procedures

The IAP and SID procedures are established in accordance with the 'Criteria for the preparation of Instrument Approach and Departure Procedures (APATC-1)'.

VFR procedures

APPROACH PROCEDURES:

HEL are to approach at 750 ft via one of the following IPs:	
IP Woeste Hoeve (WH)	PSN approx. 3 NM north-east of the AD
IP West:	PSN approx. 2 NM south-west of the AD
IP East:	PSN along road Apeldoorn-Arnhem, 1 NM north of intersection with motorway A-50.

DEPARTURE PROCEDURES:

Departure depending on intentions as directed by ATC.

REPORTING POINTS:

IP WH:	52°06,04.20"N 005°57'07.20"E
IP West:	52°02'09.00"N 005°48'56.40"E
IP East:	52°01'48.60"N 005°55'44.40"E

CIRCUIT PROCEDURES:

Circuit altitude 750 ft AMSL, direction 20 L/H, 02 R/H, 13 L/H, 31 R/H, 07 L/H and 25 R/H

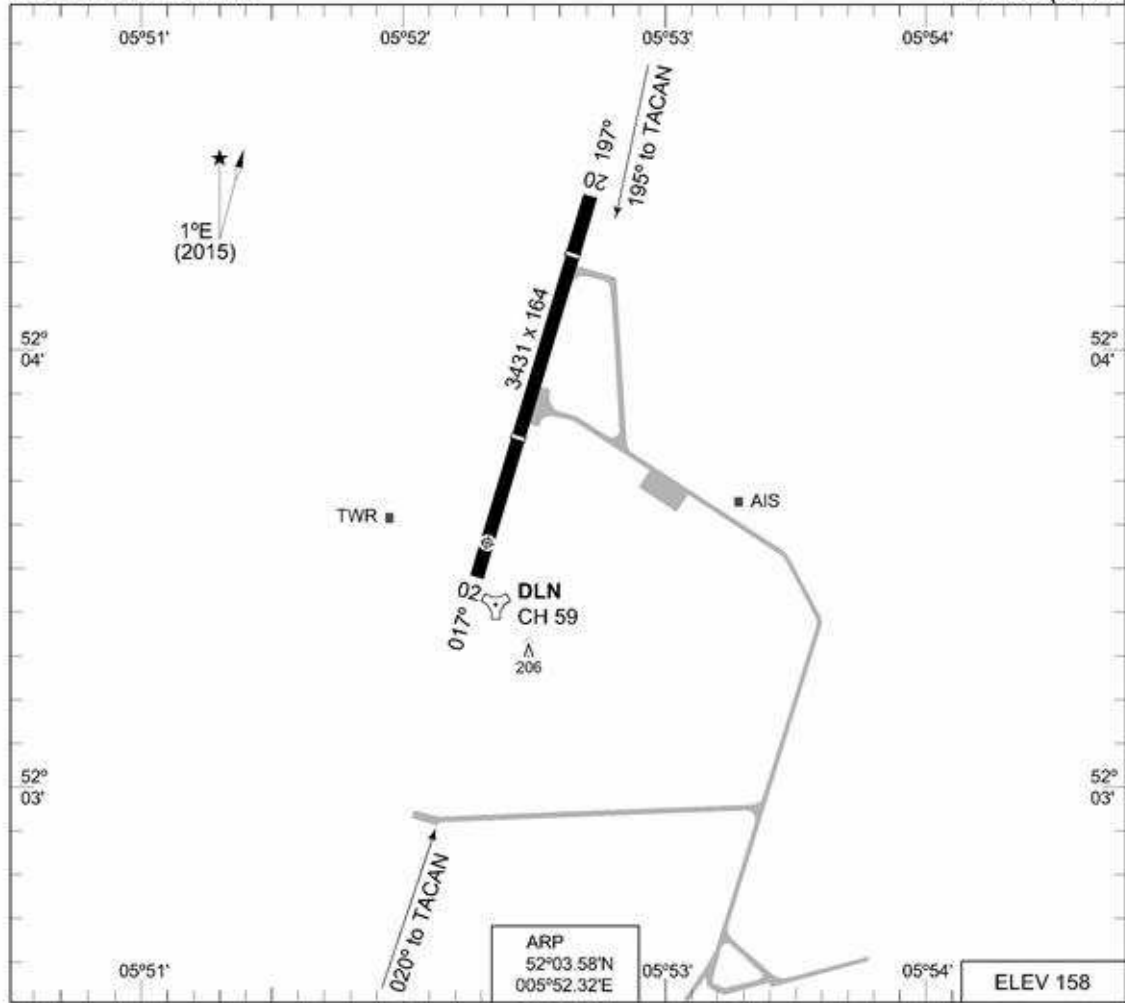
EHDL AD 2.23 Additional information

Approach control through Rapcon West.

EHDL AD 2.24 Charts related to an aerodrome

Aerodrome Chart	EHDL AD 2-7
Local map	EHDL AD 2-8
Instrument approach chart TACAN RWY 02	EHDL AD 2-10
Instrument approach chart Copter TACAN 020	EHDL AD 2-11
Instrument approach chart TACAN RWY 20	EHDL AD 2-12
Instrument approach chart Copter TACAN 195	EHDL AD 2-13

TERPS
AERODROME CHART DEELEN (EHDL)



RWY	LCN	TORA	ASDA	TODA	LDA			TOZE	THR PSN
20	30	3431	3431	3431	2536			158	52°04.20'N 005°52.62'E
02	30	3431	3431	3431	3411			151	52°03.80'N 005°52.43'E

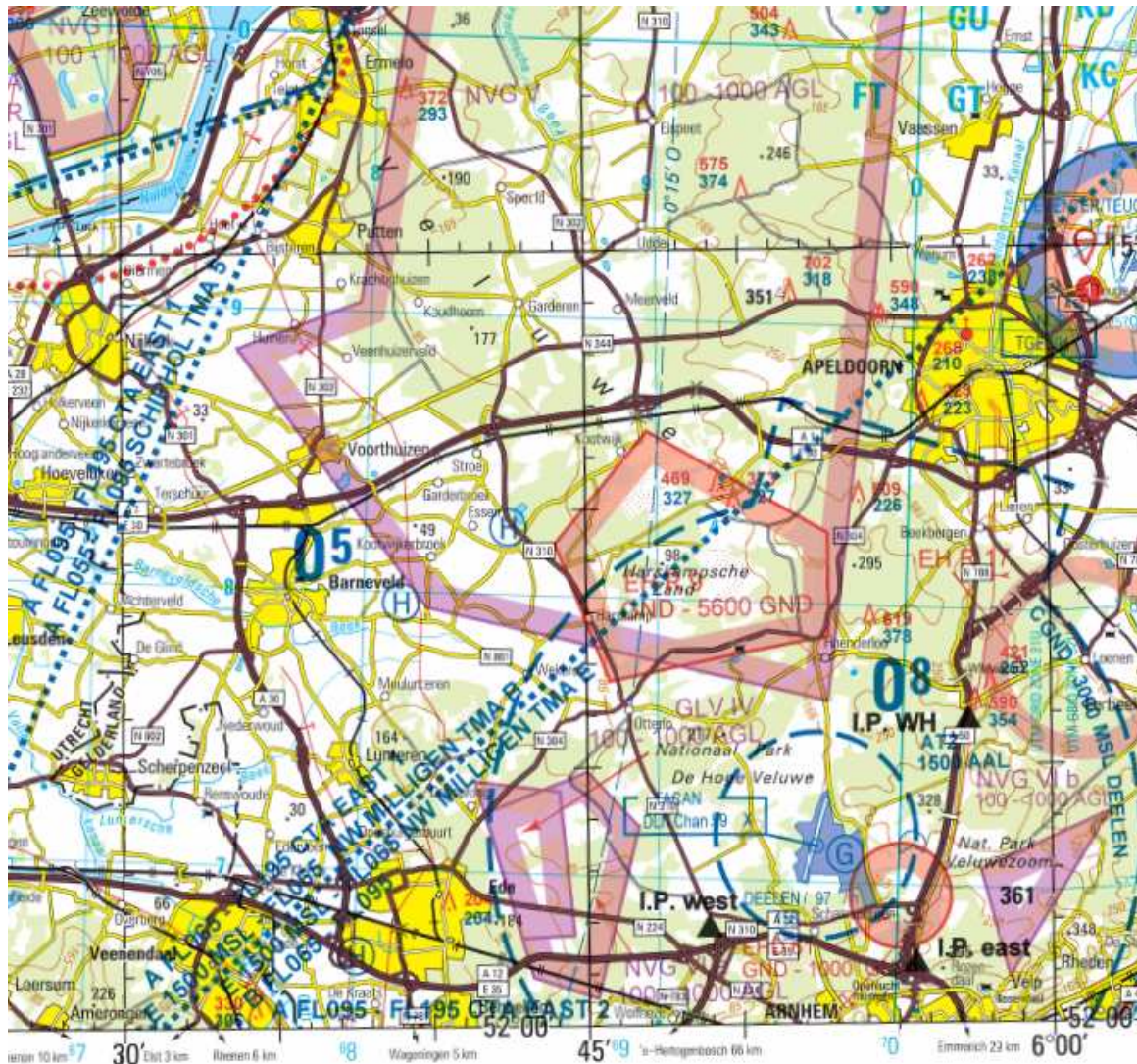
DEELEN TWR 371.475 129.930
RAPCON WEST 281.475 123.580

SRA	RWY	GS	TCH	OTCH	RPI	CAT	MINIMA
	20					ABC	600 -1600 442 (500-1.6)
	195					DE	600 -2000 442 (500-2.0)
	02					COPTER	600 -400 442 (500-0.4)
	020					ABC	480 -1600 329 (400-1.6)
						DE	480 -2000 329 (400-2.0)
						COPTER	480 -800 329 (400-0.8)

CHANGES: VAR, EDITORIAL

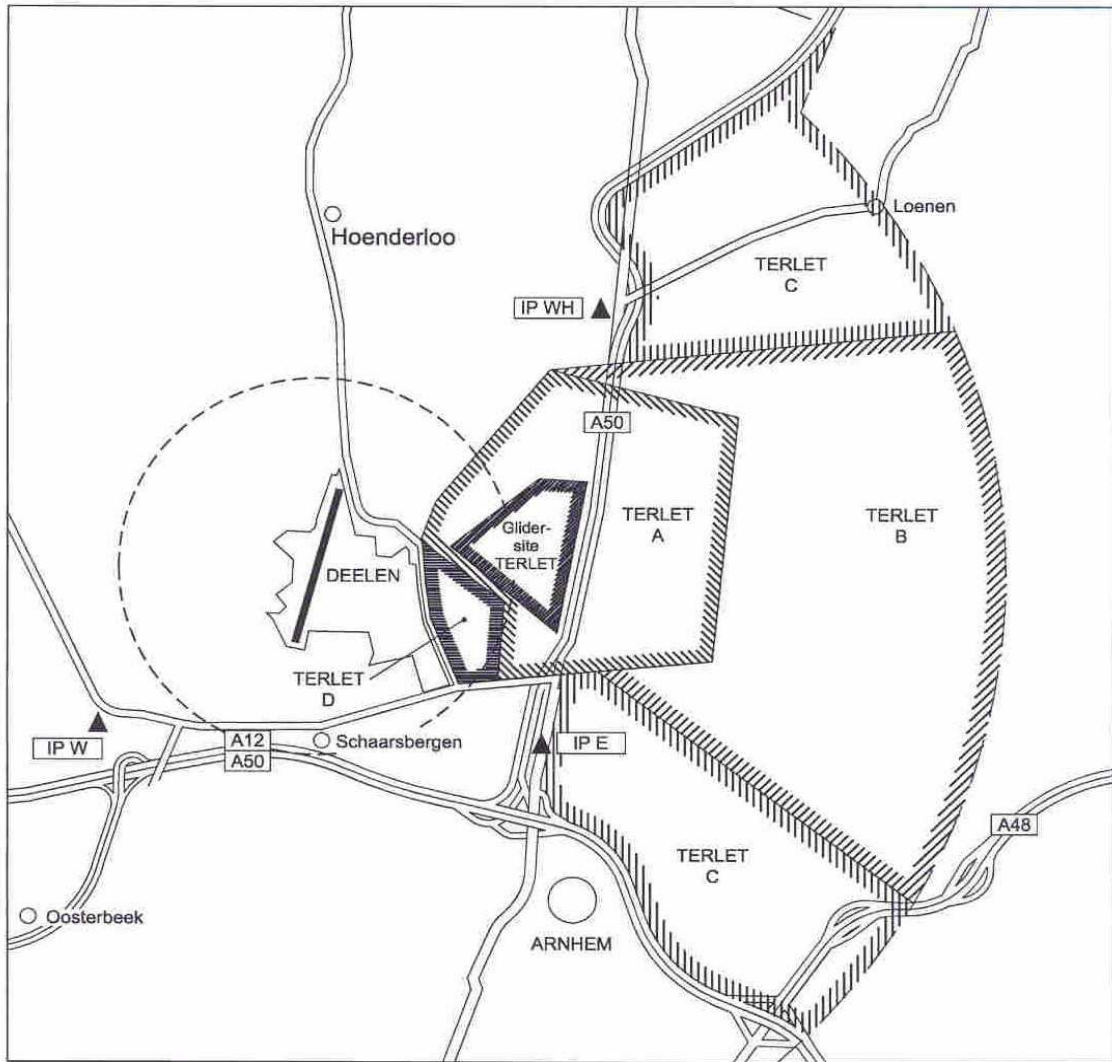
RNLAF 03 MAR 2016

LOCAL MAP



Co-ordinates

Terlet-A	Terlet-B
52°05'18,00"N 005°56'03.00"E; 52°04'47.00"N 005°58'54.00"E; 52°02'22.62"N 005°58'20.14"E; 52°02'16.67"N 005°55'05.35"E; 52°02'57.94"N 005°55'13.66"E; 52°03'41.40"N 005°53'53.77"E; 52°04'07.26"N 005°54'09.39"E; to point of origin.	52°05'18.00"N 005°56'03.00"E; 52°05'30.91"N 006°02'22.42"E; along clockwise arc (radius 6.5 NM, centre 52°03'35.02"N 005°52'18.97"E to 51°59'53.30"N 006°00'58.09"E; 52°02'19.35"N 005°56'32.65"E; 52°02'22.62"N 005°58'20.14"E; 52°04'47.00"N 005°58'54.00"E; to point of origin.



Terlet-C

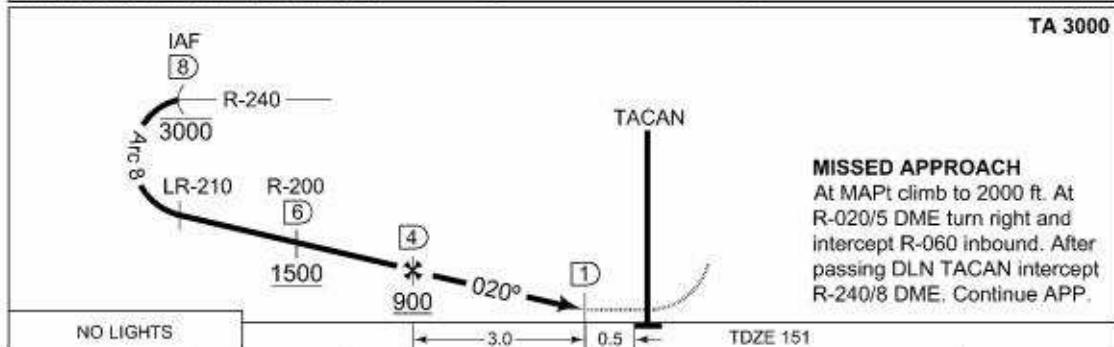
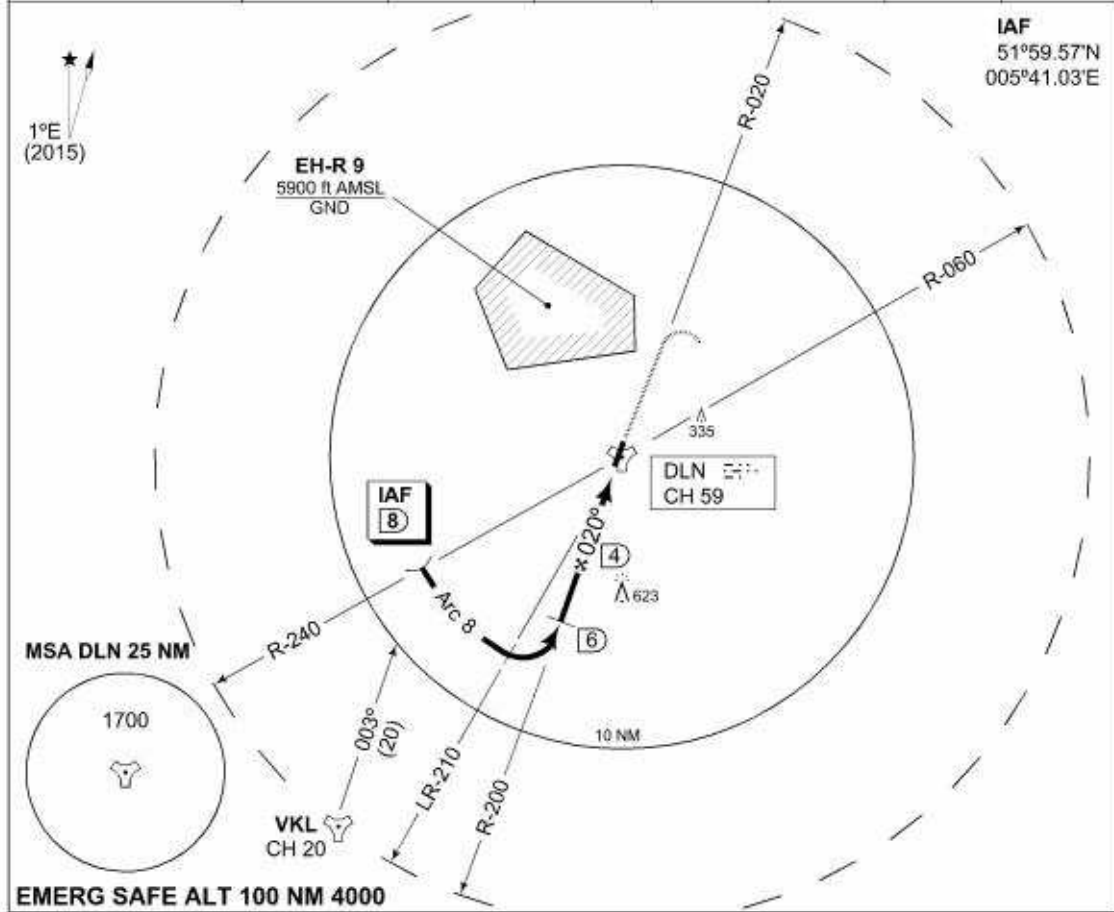
The area within the Deelen CTR north of the area 'Terlet-B' and east of highway A50 and the area within the Deelen CTR that is limited by the south-boundary of the area 'Terlet-B', highway A50 and highway A12. The vertical limits are BTN 1500/3000 ft.

Terlet-D

The area within ATZ Deelen SE of the airfield that is limited by the east- and northern boundary of the area Terlet-A, the road Koningsweg and the road Hoenderlose weg. The vertical limits are GND/3000 ft.

TERPS INSTRUMENT APPROACH CHART **TACAN RWY 02 DEELEN (EHDL)**

DUTCH MIL 264.325 132.350		RAPCON WEST 281.475 123.580		DEELEN TWR 371.475 129.930			
TACAN DLN CH 59	APP COURSE 020°	FAF ALT 900 FT	Descent GR	MDA 480	TDZE 151	ALS -	LDA 3411 FT

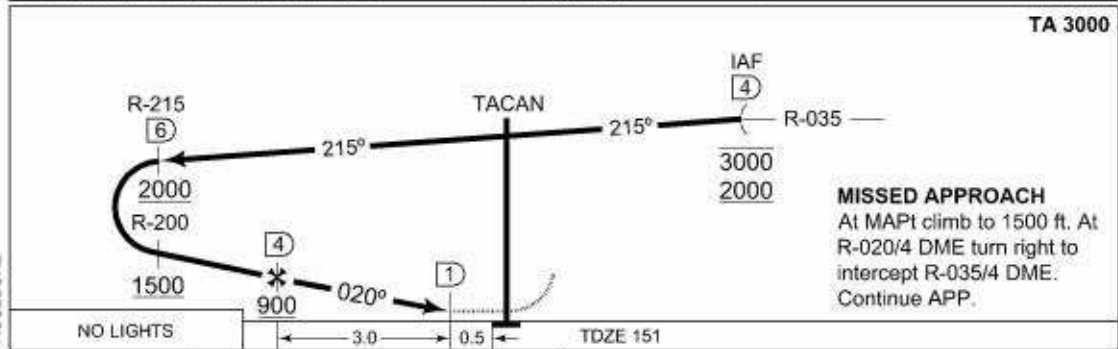
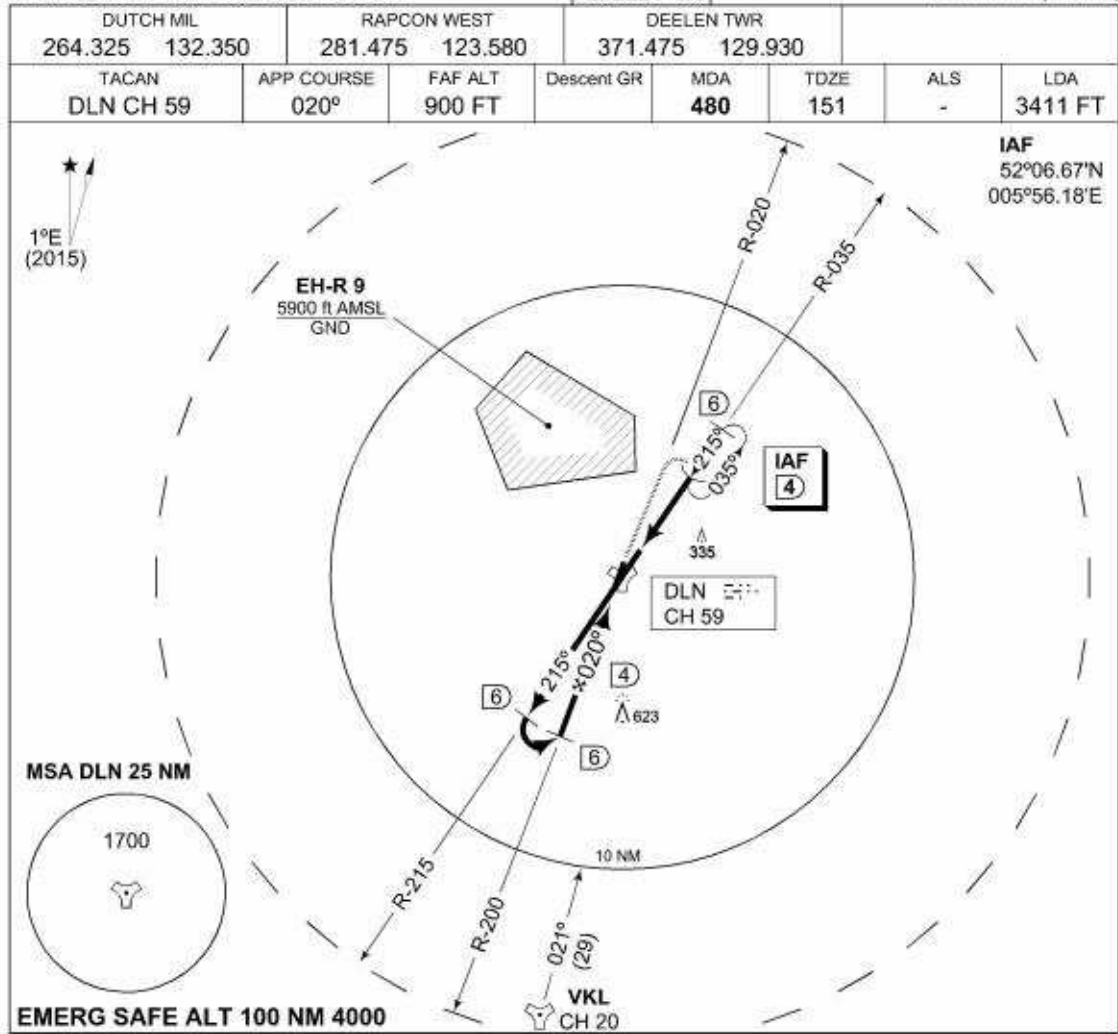


NO LIGHTS		3.0		0.5		TDZE 151	
CATEGORY	COPTER	A	B	C	D	E	
S-TACAN 02	480 -800 329 (400-0.8)	480 -1600 329 (400-1.6)				480 -2000 329 (400-2.0)	
CIRCLING	NOT AUTHORIZED						

CHANGES: VAR
MIPS

RNLAF 03 MAR 2016

TERPS INSTRUMENT APPROACH CHART **COPTER TACAN 020 DEELEN (EHDL)**



	CATEGORY	COPTER
MIPS	S-TACAN 020	480 -800 329 (400-0.8)
	CIRCLING	NOT AUTHORIZED

**TERPS
INSTRUMENT APPROACH CHART**

AD ELEV 158

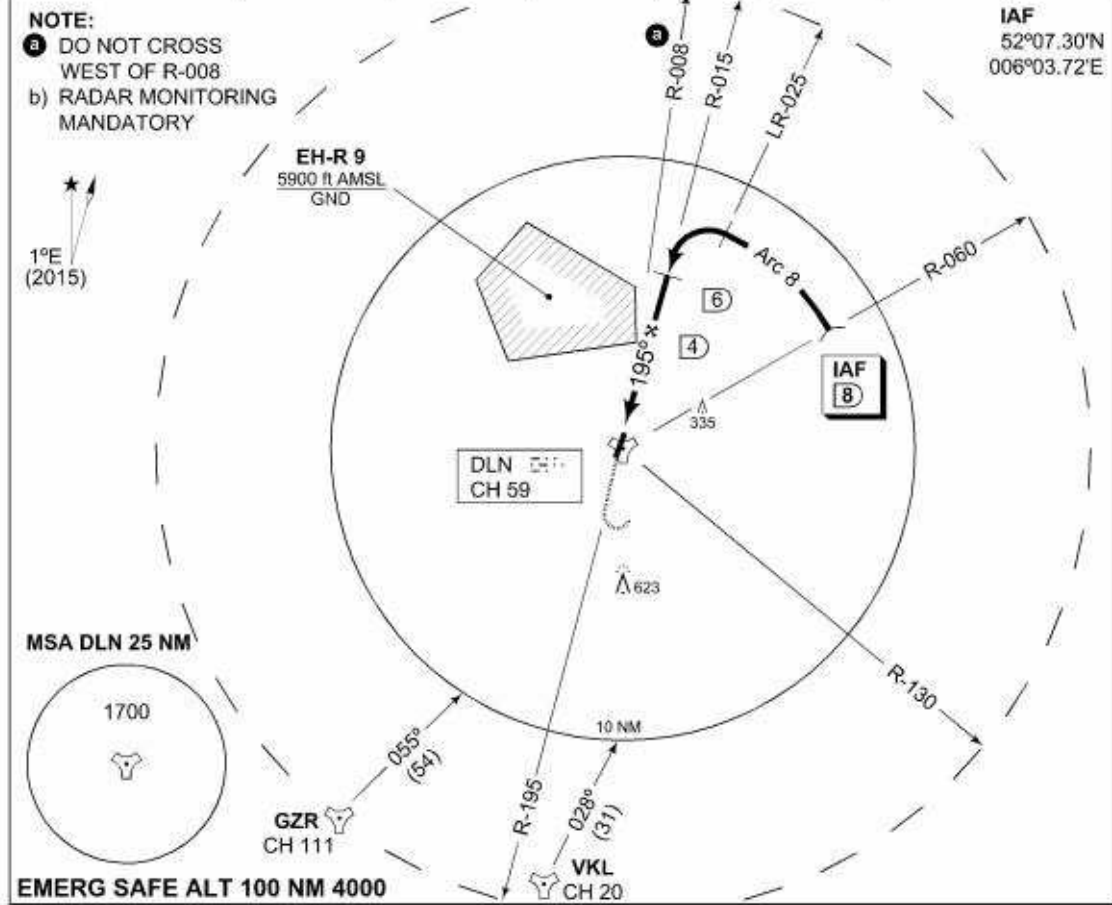
**TACAN RWY 20
DEELEN (EHDL)**

DUTCH MIL 264.325 132.350		RAPCON WEST 281.475 123.580		DEELEN TWR 371.475 129.930			
TACAN DLN CH 59	APP COURSE 195°	FAF ALT 900	Descent GR	MDA 600	TDZE 158	ALS 783 m	LDA 2536 FT

NOTE:

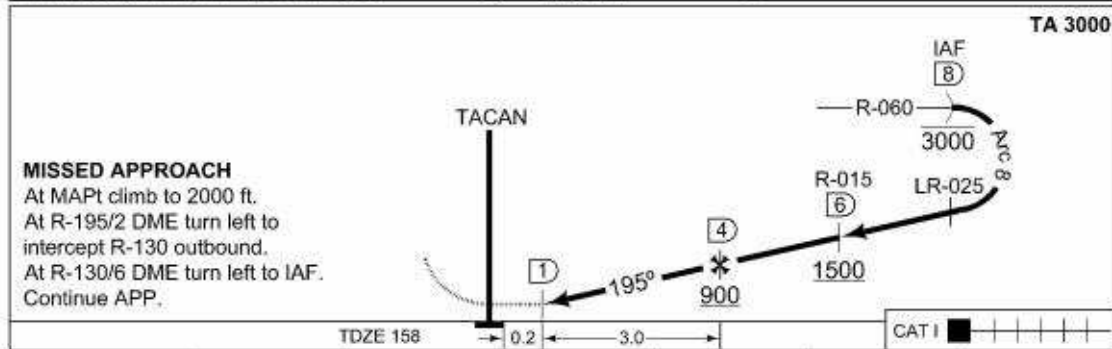
- a) DO NOT CROSS WEST OF R-008
- b) RADAR MONITORING MANDATORY

IAF
52°07.30'N
006°03.72'E



EMERG SAFE ALT 100 NM 4000

TA 3000



MISSED APPROACH
At MAPt climb to 2000 ft.
At R-195/2 DME turn left to intercept R-130 outbound.
At R-130/6 DME turn left to IAF.
Continue APP.

CHANGES: VAR MIPS	CATEGORY	COPTER	A	B	C	D	E
	S-TACAN 20	600 -400 442 (500-0.4)	600 -1400 442 (500-1.4)			600 -1600 442 (500-1.6)	
	CIRCLING	NOT AUTHORIZED					

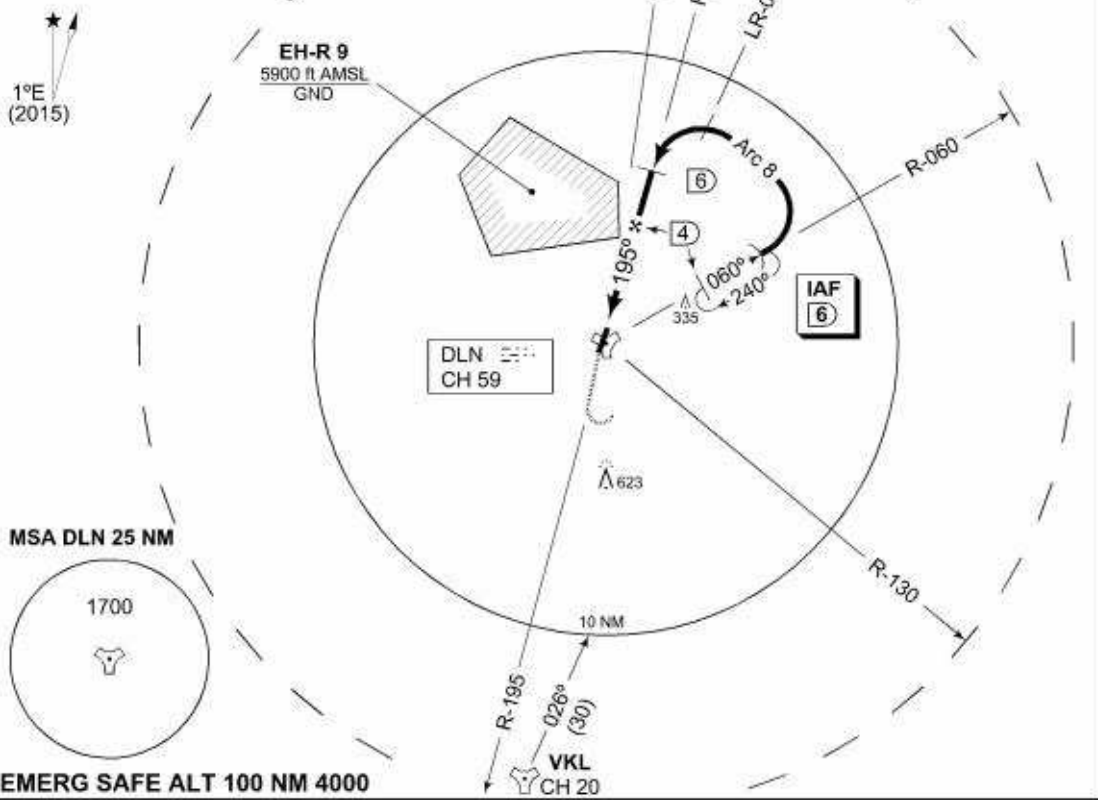
TERPS INSTRUMENT APPROACH CHART **COPTER TACAN 195 DEELEN (EHDL)**

DUTCH MIL 264.325 132.350		RAPCON WEST 281.475 123.580		DEELEN TWR 371.475 129.930			
TACAN DLN CH 59	APP COURSE 195°	FAF ALT 900 FT	Descent GR	MDA 600	TDZE 158	ALS 783 m	LDA 2536 FT

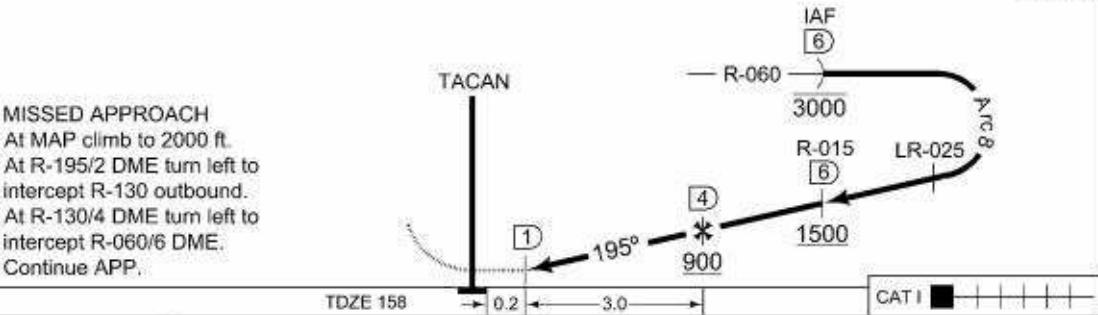
NOTE:

- a) DO NOT CROSS WEST OF R-008
- b) RADAR MONITORING MANDATORY

IAF
52°06.33'N
006°00.87'E



TA 3000



	CATEGORY	COPTER
MIPS	S-TACAN 195	600 -400 442 (500-0.4)
	CIRCLING	NOT AUTHORIZED



INTENTIONALLY LEFT BLANK