

EINDHOVEN

EHEH AD 2.1 Aerodrome location indicator and name

EHEH - Eindhoven

EHEH AD 2.2 Geographical and administrative data

| | | |
|---|---|---|
| 1 | ARP | 51°27'00.48"N 005°22'28.25"E |
| 2 | Direction and distance from city | 300° MAG/4 NM EINDHOVEN |
| 3 | Elevation/Reference temperature | +74 ft AMSL/22.3o C (JUL) |
| 4 | MAG VAR/Annual change | 0°11'E (JAN 2010)/-9' |
| 5 | AD operating authority Postal address Visitors' address Telephone Telefax AFTN | RNLAF Vliegbasis Eindhoven MPA 87A P.O. Box 8762 4820 BB Breda Flight Forum 1550 5657 EZ Eindhoven +31(0)40 2896911 +31(0)40 2896466 EHEHZTX |
| 6 | Types of TFC permitted (IFR/VFR) | IFR/VFR |
| 7 | Remarks | Nil |

EHEH AD 2.3 Operational hours

| | | |
|----|----------------------------|---|
| 1 | AD OPR HR | MON/FRI 0700/1545 (0600/1445) |
| 2 | Customs and immigration | 30 MIN PN |
| 3 | Health and sanitation | HO |
| 4 | AIS Briefing office | See 2.23 |
| 5 | ATS Reporting Office (ARO) | See 2.23 |
| 6 | MET Briefing Office | HO |
| 7 | ATS | MIL and CIV HO |
| 8 | Fuelling | HO |
| 9 | Handling | HO |
| 10 | Security | HO |
| 11 | De-icing | HO |
| 12 | Remarks | For CIV OPR HRS see AIP Netherlands EHEH AD 2.3 |

EHEH AD 2.4 Handling services and facilities

| | | |
|---|--------------------------------|---|
| 1 | Cargo-handling facilities | Yes |
| 2 | Fuel/oil types | F-34, H-515, O-147, O-148, O-156 |
| 3 | Fuelling facilities/capacity | No limitations |
| 4 | Oxygen | No |
| 5 | De-icing facilities/type | S-742 |
| 6 | Starting units | DSA 150, DSA 600, DSA 900, JAS, DC 3500 |
| 7 | Hangar space for visiting ACFT | O/R |
| 8 | Repair facilities | F50, F60, C130 |
| 9 | Remarks | No X-servicing for armed ACFT |

EHEH AD 2.5 Passenger facilities

| | | |
|---|--------------------|---|
| 1 | Remain overnight | AVBL O/R |
| 2 | Medical facilities | First Aid treatment and first responders on site. Hospitals in Eindhoven (8km) |
| 3 | Remarks | Nil |

EHEH AD 2.6 Rescue and fire fighting services

| | | |
|---|-------------------------------|-------------------------------------|
| 1 | AD category for fire fighting | Fire NATO CAT 8 higher O/R 48 HR PN |
| 2 | Remarks | Nil |

EHEH AD 2.7 Seasonal availability - clearing

| | | |
|---|------------------------|---|
| 1 | Seasonal availability | All seasons |
| 2 | Snow removal equipment | Yes |
| 3 | Remarks | Caution advised in winter during ice conditions |

EHEH AD 2.8 Aprons, taxiways and check locations/positions data

| | | |
|---|---------------------------------|--|
| 1 | Apron surface and strength | West:Concrete, PCN 61 R/B/W/T East:Concrete, PCN 80 R/B/W/T |
| 2 | TWY width, surface and strength | Width minimal 54 ft, concrete, PCN 61 R/B/W/T |
| 3 | Remarks | TWY B (west of RWY) and TWY F: PCN 60 R/B/W/T |

EHEH AD 2.9 Surface movement guidance and control system and markings

| | | |
|---|-----------------------|-------------------------|
| | According STANAG 3158 | |
| 1 | Remarks | 'Follow-me' car is AVBL |

EHEH AD 2.10 Aerodrome obstacles

| |
|---------------------|
| See Aerodrome Chart |
|---------------------|

EHEH AD 2.11 Meteorological information provided

| | | |
|---|--|--|
| 1 | Associated MET Office | Eindhoven |
| 2 | Hours of service MET Office outside hours | HO Joint MET Group |
| 3 | Office responsible for TAF preparation Periods of validity | Eindhoven/Joint MET Group 9 HRS |
| 4 | Type of landing forecast Interval of issuance | Colourstate trend Hourly |
| 5 | Flight documentation Language(s) used | Charts, abbreviated plain language text English/Dutch |
| 6 | Charts and other information AVBL for briefing or consultation | SWC, prognostic upper air chart, radar satellite images |
| 7 | Supplementary equipment AVBL for providing information | Telefax |
| 8 | Remarks | Tel. Eindhoven: +31(0)40 2896483 Tel. Joint MET Group: +31(0)164 693111 |

EHEH AD 2.12 Runway physical characteristics

| | | |
|---|----------------|---|
| 1 | RWY dimensions | See Aerodrome Chart. Values in ft. |
| 2 | RWY a-gear | Cable withdrawn, available on 20 min notice |
| 3 | RWY surface | Tarmac |
| 4 | RWY strength | PCN 60 F/A/W/T |

EHEH AD 2.13 Declared distances

| |
|------------------------------------|
| See Aerodrome Chart. Values in ft. |
|------------------------------------|

EHEH AD 2.14 Approach and runway lighting

| According STANAG 3316 | | |
|-----------------------|-------------------|--|
| 1 | Approach lighting | RWY 21: CAT I. 869 m RWY 03: CAT I. 892 m |
| 2 | RWY lighting | RWY 03/21 VCL/VHI |
| 3 | PAPI | Situated on the left side of both RWYs |
| 4 | Remarks | Nil |

EHEH AD 2.15 Other lighting, secondary power supply

| | | |
|---|------------------------------------|---------------------------------------|
| 1 | LDI | Nil |
| 2 | TWY edge lighting | VB |
| 3 | Emergency RWY lighting | Nil |
| 4 | Emergency TWY edge lighting | Retroreflective markers |
| 5 | Secondary power supply/switch-over | AVBL switch over time within 1 second |
| 6 | Remarks | Nil |

EHEH AD 2.16 Helicopter landing area

| | | |
|---|----------|---------------------|
| 1 | Location | See Aerodrome Chart |
| 2 | Marking | Daylight marking |
| 3 | Lighting | No |
| 4 | Remarks | Nil |

EHEH AD 2.17 Air traffic services airspace

| | | |
|---|-----------------------------------|---|
| 1 | Designation and lateral limits | EINDHOVEN CTR 51°38'52.86"N 005°23'22.88"E; 51°27'33.73"N 005°41'28.57"E; 51°21'21.33"N 005°31'29.98"E; along clockwise arc (radius 8 NM, centre 51°27'00.48"N 005°22'28.25"E) to 51°32'38.93"N 005°13'24.29"E; to point of origin. |
| 2 | Vertical limits | GND to 3000 ft AMSL |
| 3 | Airspace classification | C |
| 4 | ATS unit call sign Language(s) | Contact initially Eindhoven TWR, outside HO Dutch Mil Info 132.350 MHz. English |
| 5 | Transition altitude | IFR: 3000 ft AMSL; VFR: 3500 ft AMSL |
| 6 | Remarks | Nil |

EHEH AD 2.18 Air traffic services communication facilities

| STATION/ SERVICE | CALL SIGN OR IDENTIFICATION | FREQUENCY MHz | HOURS | REMARKS |
|---------------------|--------------------------------|---|-------|---------------------------------|
| 1 | 2 | 3 | 4 | 5 |
| | As appropriate | 121.500 243.000 | HO | Emergency FREQ for all services |
| TWR | Eindhoven Tower | 131.005*)**)*) 122.100 281.150*) 257.800 | HO | *)Primary FREQ **)VDF |
| GND CTL | Eindhoven Ground | 369.250 121.930 | HO | |
| APP | RAPCON South | 123.180*) 122.100 379.925*) | HO | Radar equipped |
| RADAR | Eindhoven Arrival | 124.530 **)*) 122.100 278.050 | HO | Through APP |
| ATIS | | 126.030 | | Coverage 60 NM/20000 ft |

EHEH AD 2.19 Radio navigation and landing aids

| FACILITY | ID | CHANNEL FREQ. | HOURS | CO-ORD. | RANGE/ ALTITUDE | REMARKS |
|---------------------|-----|------------------|-------|---------------------------------|--------------------|---|
| 1 | 2 | 3 | 4 | 5 | 6 | 7 |
| NDB | EHN | 397 | H24 | 51°28'04.27"N 005°23'41.50"E | | 038° MAG 0.6 NM from the THR RWY 21 |
| TACAN | EHV | CH 119X | H24 | 51°26'53.39"N 005°22'29.78"E | 150 NM/60000 ft | FREQ protected |
| ILS 03 LOCALIZER | EHZ | 109.750 | H24 | 51°27'45.01"N 005°23'18.19"E | | 036° MAG 0.23 NM from the THR RWY 21 |
| GLIDEPATH | | 333.050 | H24 | 51°26'34.18"N 005°22'06.36"E | | 0.20 NM past THR RWY 03 |
| DME 03 | EHZ | CH 34Y | H24 | 51°26'34.18"N 005°22'06.36"E | | Situated on Glide- path 03. One direc- tion only. |
| ILS 21 LOCALIZER | EHO | 109.750 | H24 | 51°26'15.09"N 005°21'37.39"E | | 216° MAG 0.25 NM from the THR RWY 03 |
| GLIDEPATH | | 333.050 | H24 | 51°27'22.30"N 005°23'01.56"E | | 0.19 NM past THR RWY 21 |
| DME 21 | EHO | CH 34Y | H24 | 51°27'22.30"N 005°23'01.56"E | | Situated on Glide- path 21. One direc- tion only. |

EHEH AD 2.20 Local traffic regulations

TAXI PROCEDURES

Eindhoven Ground 121.930 is operational during aerodrome operational hours.
After permission for start-up Eindhoven Ground will give instructions for push-back and taxi.
On runway and taxiway no turns greater than 90° allowed.

OPERATIONAL USE OF INTERSECTION TAKE-OFFS

ATC may assign an intersection take-off to any aircraft for operational reasons. Aircraft may after approval from ATC use intersection E for take-off.
During low visibility procedures (visibility < 1500 m and cloudbase < 400 ft) intersection take-offs are not allowed.

EHEH AD 2.21 Noise abatement procedures

RWY 03: Climb on RWY track until 4 DME and at least 1000 ft.
RWY 21: Climb on RWY track until 3 DME and at least 1000 ft.
Instrument approaches mandatory, light ACFT exempted.

EHEH AD 2.22 Flight procedures

IFR procedures

The IAP and SID procedures are established in accordance with STANAG 3759 and AATCP-1.

VFR procedures

CONVENTIONAL ACFT:

AD control is to be called 15 MIN prior LDG and ACFT have to join the circuit under a 90° angle to the ordered down wind.

HEL:

Approach and departure procedures to be carried out from north-west. When approaching from/departing to north-west HEL may cross RWY 03/21 after R/T permission has been obtained. In order to avoid built-up areas, sector 060/120° is prohibited.

REPORTING POINTS:

| | | |
|-----------|------------------------|--------------------------------|
| Hotel: | 51°28'45"N 005°19'16"E | |
| Mike: | 51°26'13"N 005°25'34"E | |
| November: | 51°29'45"N 005°25'33"E | |
| Oscar: | 51°29'56"N 005°17'11"E | Sierra: 51°22'27"N 005°19'39"E |
| Tango: | 51°34'28"N 005°17'20"E | |
| Victor: | 51°24'18"N 005°25'53"E | |
| Whiskey: | 51°29'55"N 005°11'36"E | |
| X-ray: | 51°21'04"N 005°25'16"E | |
| Yankee: | 51°25'20"N 005°41'57"E | |
| Zulu: | 51°19'09"N 005°27'03"E | |

CIRCUIT HEIGHTS:

| | |
|--------------------|---------|
| Conventional ACFT: | 1000 ft |
| Light ACFT: | 1000 ft |
| HEL: | 500 ft |

NOTE: R/H circuit on RWY 21

LOW VISIBILITY PROCEDURES

During periods of low visibility the overall ATC capacity is reduced. To guarantee aircraft safety an optimal use of ATC capacity, Eindhoven Airport uses ATC low visibility procedures. When the visibility falls below 1500 m and the ceiling becomes equal or below 300 ft cautionary measures are taken.

| Phase | Conditions | Procedure |
|-------|--|--|
| A | ≥ 1100 m Lowest RVR ≤ 1500 m and/or ceiling ≤ 300 ft | No opposite take-off and landings; Limited use of intersection take-offs; All WIP in the maneuvering area will be terminated |
| B | ≥ 550 m Lowest RVR ≤ 1100 m and/or ceiling ≤ 300 ft | Separation between landing aircraft will be increased to 8 Nm |
| C | ≥ 300 m Lowest RVR ≤ 550 m and/or ceiling ≤ 200 ft | Tfc will be reduced to "one movement a time" |
| D | Lowest RVR ≤ 300 m | The airport is below operational minima for arrival and departing aircraft |

EHEH AD 2.23 Additional information

Approach control through Rapcon South. ILS approaches for RWY 03/21 from 2000 ft. RVR AVBL for RWY 03/21.

AIS Briefing office facility and the ATS Reporting Office (ARO) is only available through the Flight Data and Notam Office (FDNO) located at AOCS Nieuw Milligen.

Tel: +31(0)577 458336/8781

Fax: +31(0)577 456523

E-mail: aocs.fdns@mindef.nl

AFTN: EHMCZPZX

avlbl H24

PPR 24 HRS: for Prior Permission Request contact Mission Support

Tel: +31(0)40 2896837

Fax: +31(0)40 2896815

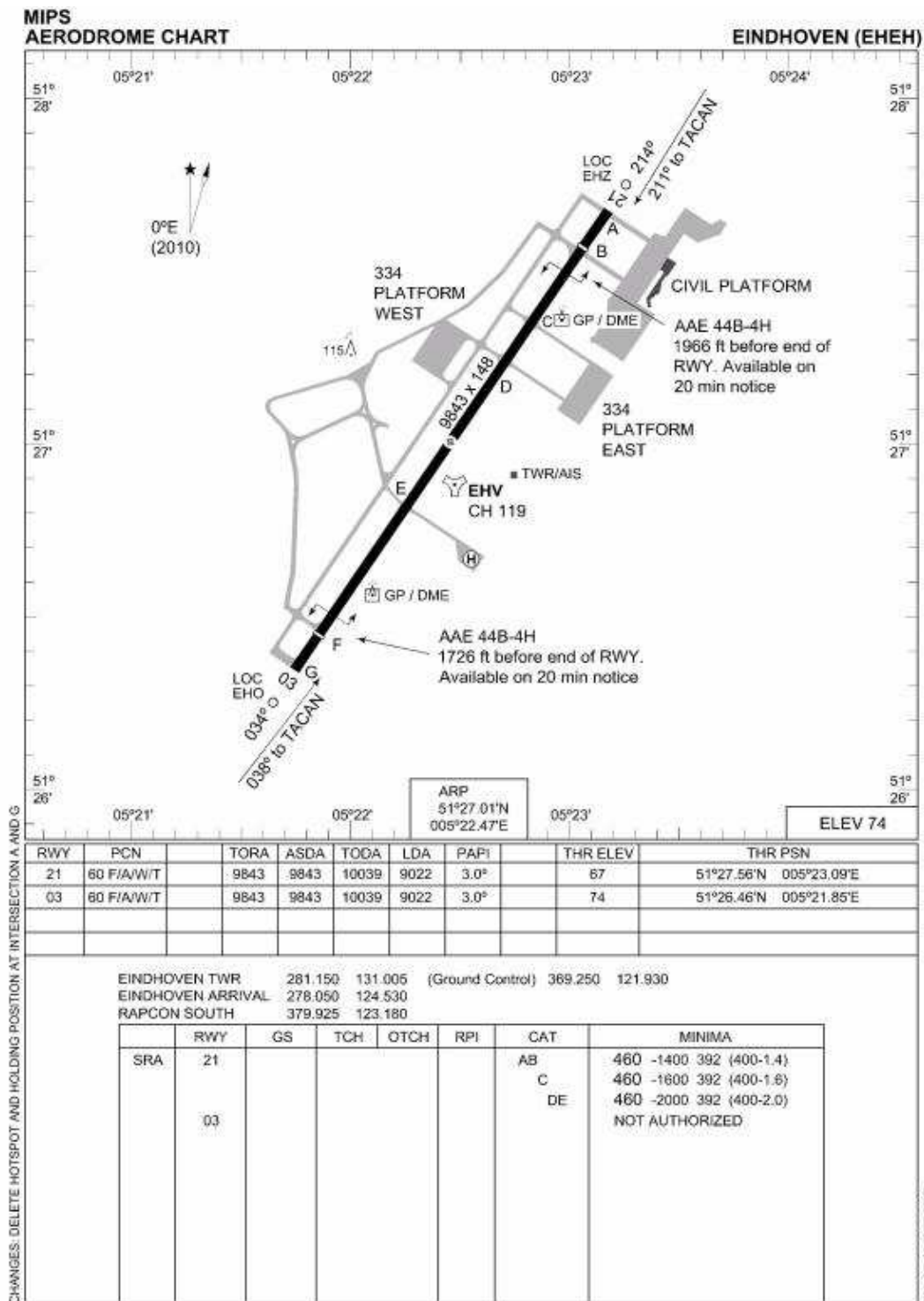
E-mail: pcc-fo@abeheh.nl

CIV training flights prohibited except for home-based ACFT.

No X-servicing for armed ACFT.

EHEH AD 2.24 Charts related to an aerodrome

| | |
|--|--------------|
| Aerodrome Chart | EHEH AD 2-9 |
| Local map | EHEH AD 2-10 |
| Instrument departure chart EH1 | EHEH AD 2-11 |
| Instrument departure chart EH3 | EHEH AD 2-12 |
| Instrument departure chart EH5 | EHEH AD 2-13 |
| Instrument departure chart EH7 | EHEH AD 2-14 |
| Instrument approach chart HI-ILS/DME or LOC RWY 03 | EHEH AD 2-15 |
| Instrument approach chart ILS/DME Z or LOC RWY 03 | EHEH AD 2-16 |
| Instrument approach chart HI-TACAN RWY 03 | EHEH AD 2-17 |
| Instrument approach chart TACAN RWY 03 | EHEH AD 2-18 |
| Instrument approach chart RNAV (GNSS) RWY 03 | EHEH AD 2-19 |
| Instrument approach chart HI-ILS/DME or LOC RWY 21 | EHEH AD 2-20 |
| Instrument approach chart ILS/DME Z or LOC RWY 21 | EHEH AD 2-21 |
| Instrument approach chart HI-TACAN RWY 21 | EHEH AD 2-22 |
| Instrument approach chart TACAN RWY 21 | EHEH AD 2-23 |
| Instrument approach chart RNAV (GNSS) RWY 21 | EHEH AD 2-24 |



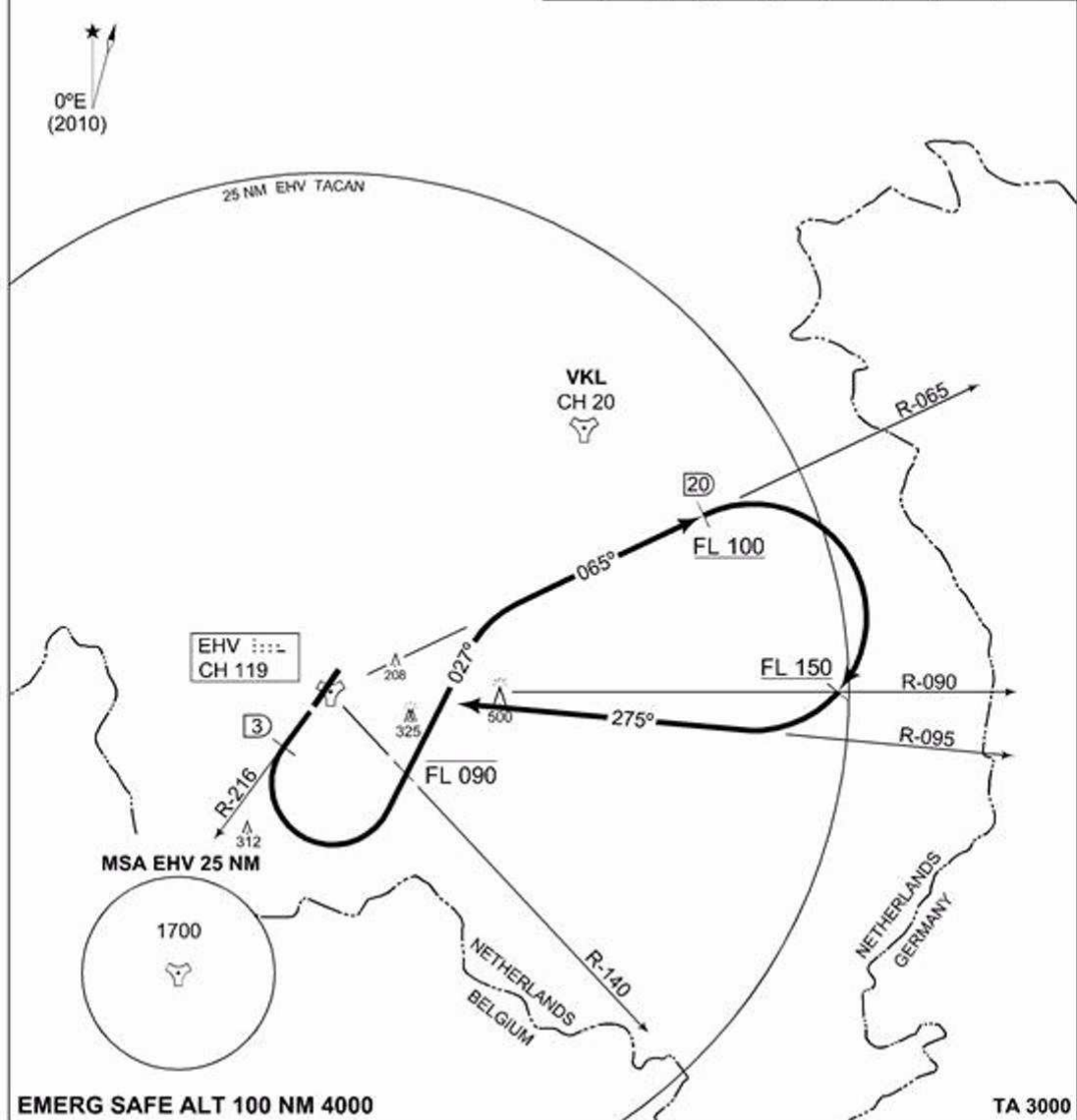
LOCAL MAP



TFC(L) 2nd Series Sheet 001 21-3 Edition 22

MIPS INSTRUMENT DEPARTURE CHART **EH1 EINDHOVEN (EHE)**

| | | | | | | | | | | | |
|---------|---------|---------------|---------|--------------|-----------|---------|---------|-----------|------|------|---------|
| GND CTL | | EINDHOVEN TWR | | RAPCON SOUTH | | | | DUTCH MIL | | | |
| 369.250 | 121.930 | 281.150 | 131.005 | 379.925 | 123.180 | 264.325 | 132.350 | | | | |
| | | | | RWY | Knots | 120 | 180 | 240 | 300 | 360 | to |
| | | | | 21 | V/V (fpm) | 500 | 750 | 1000 | 1250 | 1500 | 3000 ft |
| | | | | | V/V (fpm) | 600 | 900 | 1200 | 1500 | 1800 | FL 150 |

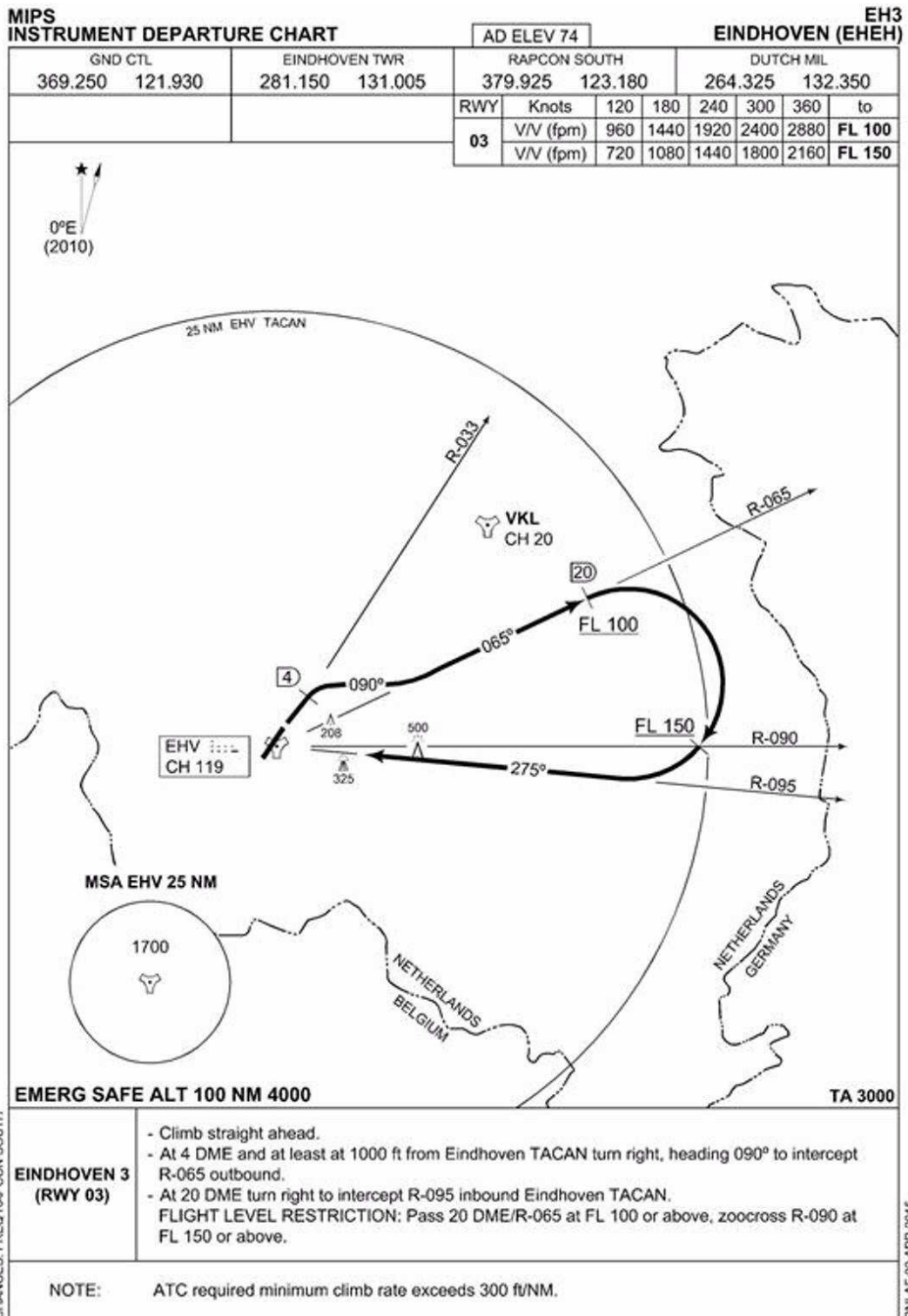


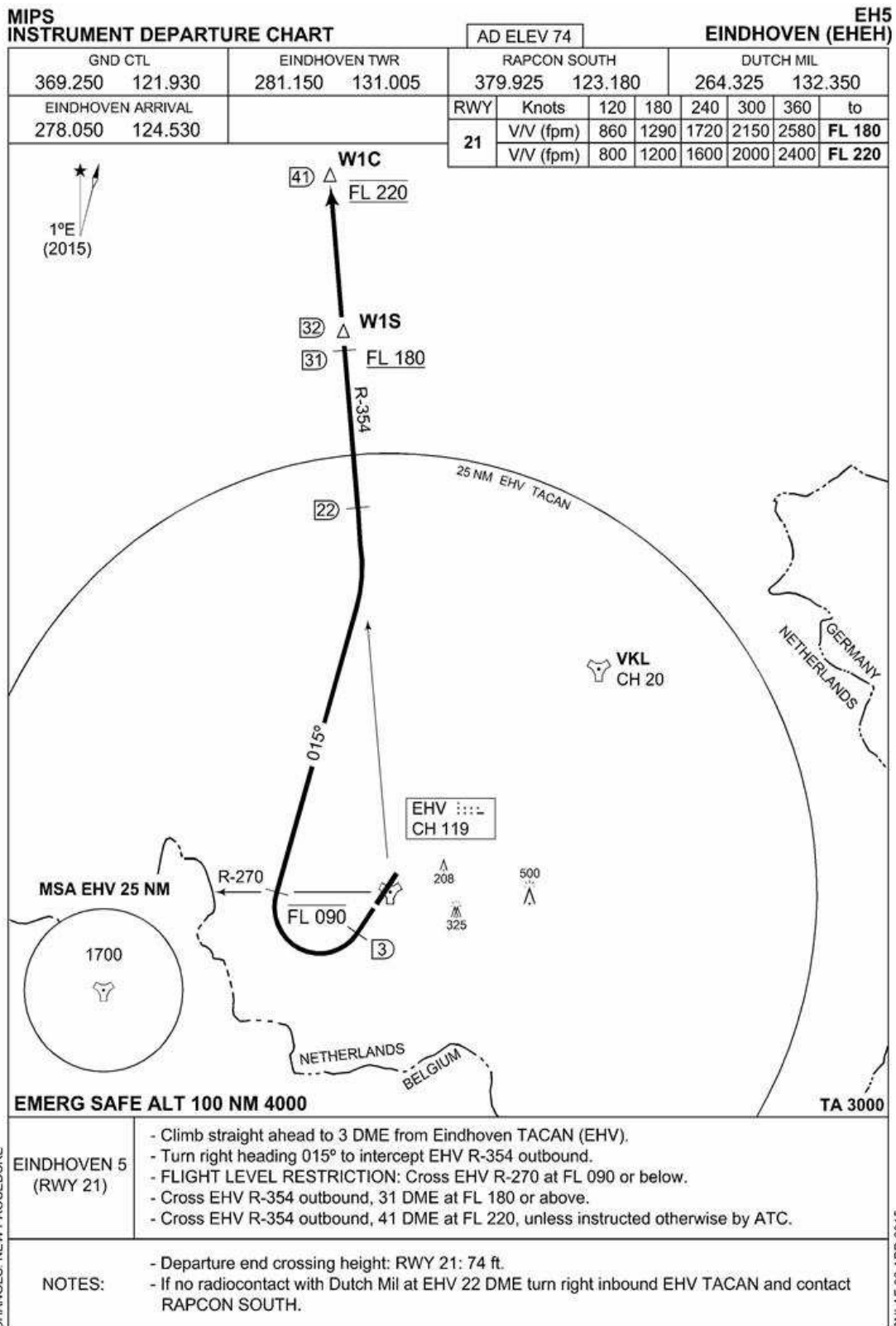
EMERG SAFE ALT 100 NM 4000 **TA 3000**

| | |
|------------------------------------|---|
| <p>EINDHOVEN 1 (RWY 21)</p> | <ul style="list-style-type: none"> - Climb straight ahead. - At 3 DME and at least at 1000 ft from Eindhoven TACAN turn left, heading 027° to intercept R-065 outbound. FLIGHT LEVEL RESTRICTION: Cross R-140 at FL 090 or below. - At 20 DME turn right to intercept R-095 inbound Eindhoven TACAN. FLIGHT LEVEL RESTRICTION: Pass 20 DME/R-065 at FL 100 or above, cross R-090 at FL 150 or above. |
|------------------------------------|---|

CHANGES: FREQ RAPCON SOUTH

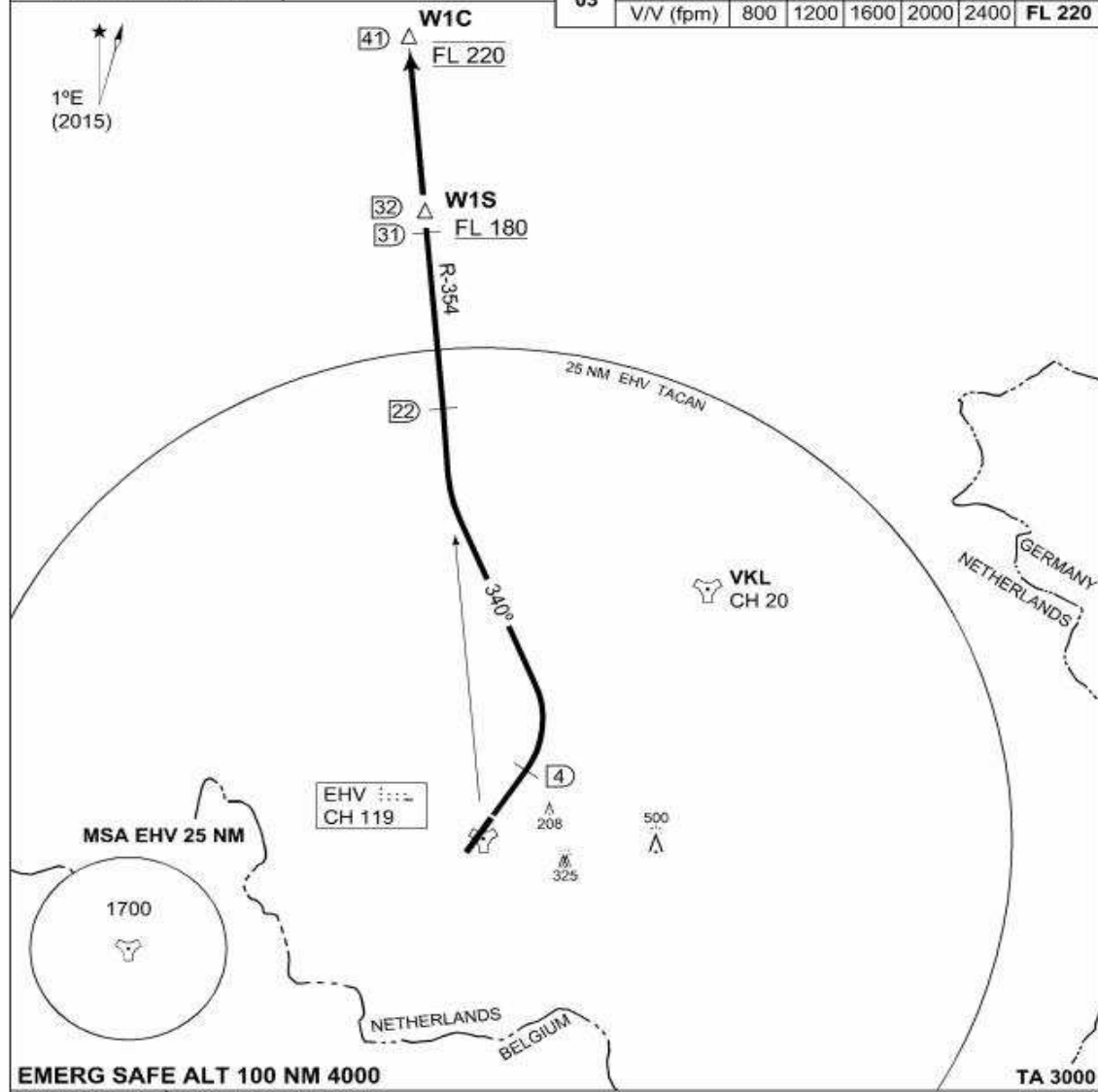
RNLAf 02 APR 2015





MIPS INSTRUMENT DEPARTURE CHART **EH7 EINDHOVEN (EHEH)**

| | | | | | | | | | | | | | | | |
|-------------------|---------------|------------|---------|---------|-----------|--------------|---------|------|------|-----------|--------|--|--|--|--|
| GND CTL | EINDHOVEN TWR | AD ELEV 74 | | | | RAPCON SOUTH | | | | DUTCH MIL | | | | | |
| 369.250 | 121.930 | 281.150 | 131.005 | 379.925 | 123.180 | 264.325 | 132.350 | | | | | | | | |
| EINDHOVEN ARRIVAL | | | | RWY | Knots | 120 | 180 | 240 | 300 | 360 | to | | | | |
| 278.050 | 124.530 | | | 03 | V/V (fpm) | 1140 | 1710 | 2280 | 2840 | 3410 | FL 180 | | | | |
| | | | | | V/V (fpm) | 800 | 1200 | 1600 | 2000 | 2400 | FL 220 | | | | |



EINDHOVEN 7 (RWY 03)

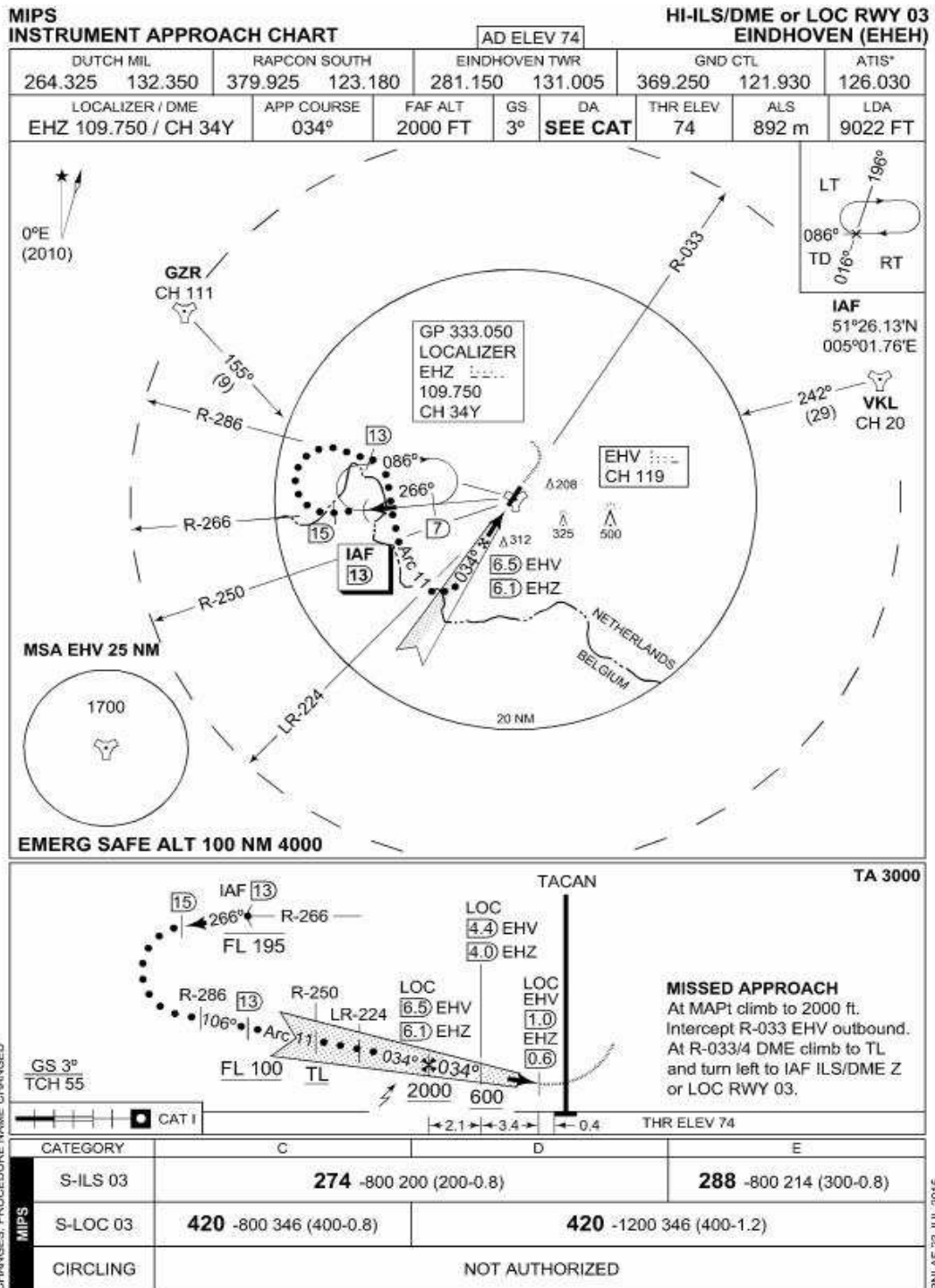
- Climb straight ahead to 4 DME from Eindhoven TACAN (EHV).
- Turn left heading 340° to intercept EHV R-354 outbound.
- Cross EHV R-354 outbound, 31 DME at FL 180 or above.
- Cross EHV R-354 outbound, 41 DME at FL 220, unless instructed otherwise by ATC.

NOTES:

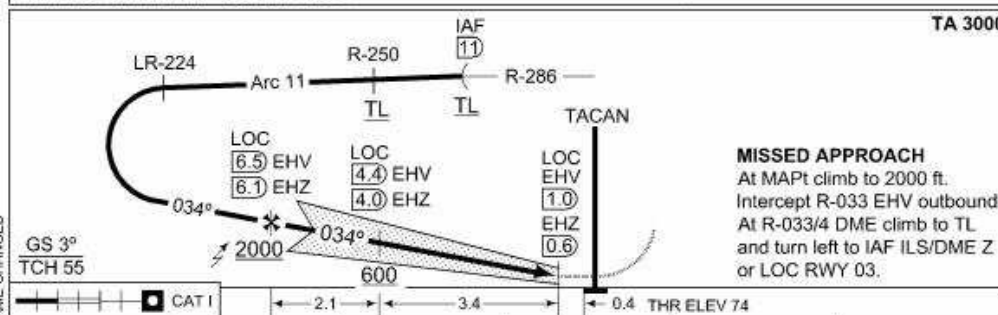
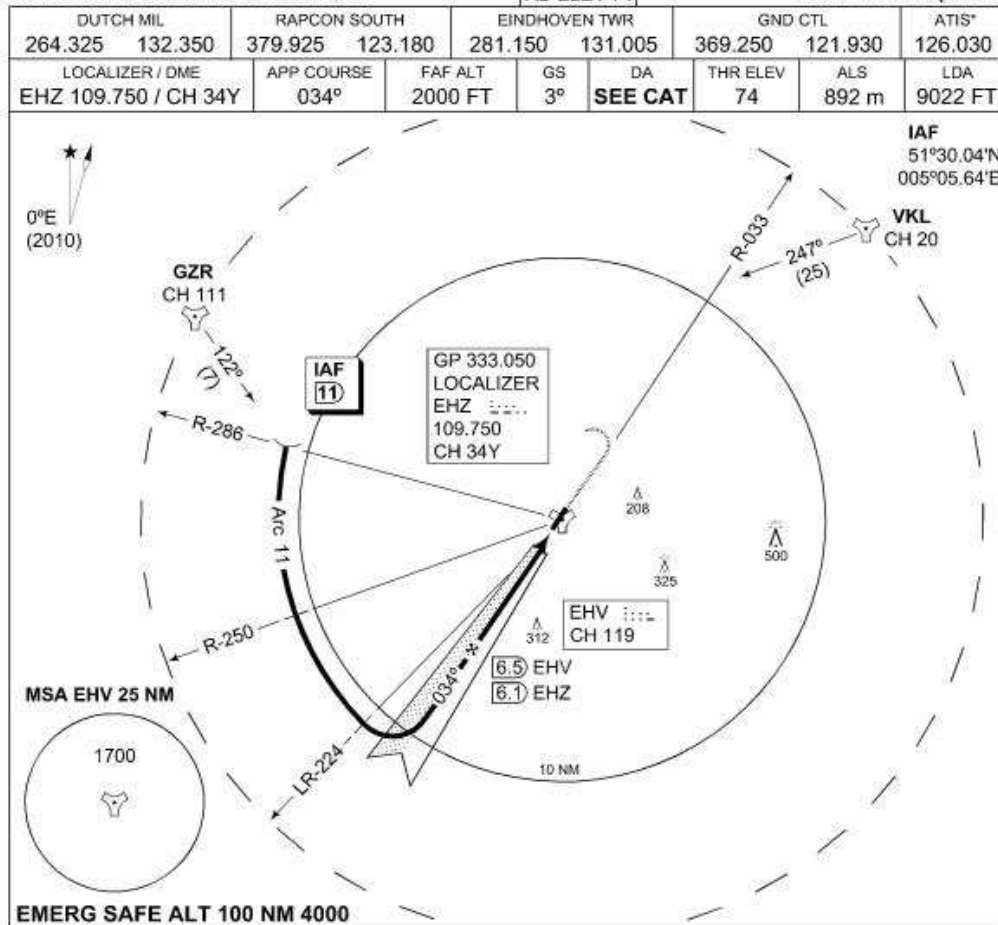
- Departure end crossing height: RWY 03: 66 ft.
- If no radiocontact with Dutch Mil at EHV 22 DME turn right inbound EHV TACAN and contact RAPCON SOUTH.

CHANGES: NEW PROCEDURE

RNLAF 02 APR 2015



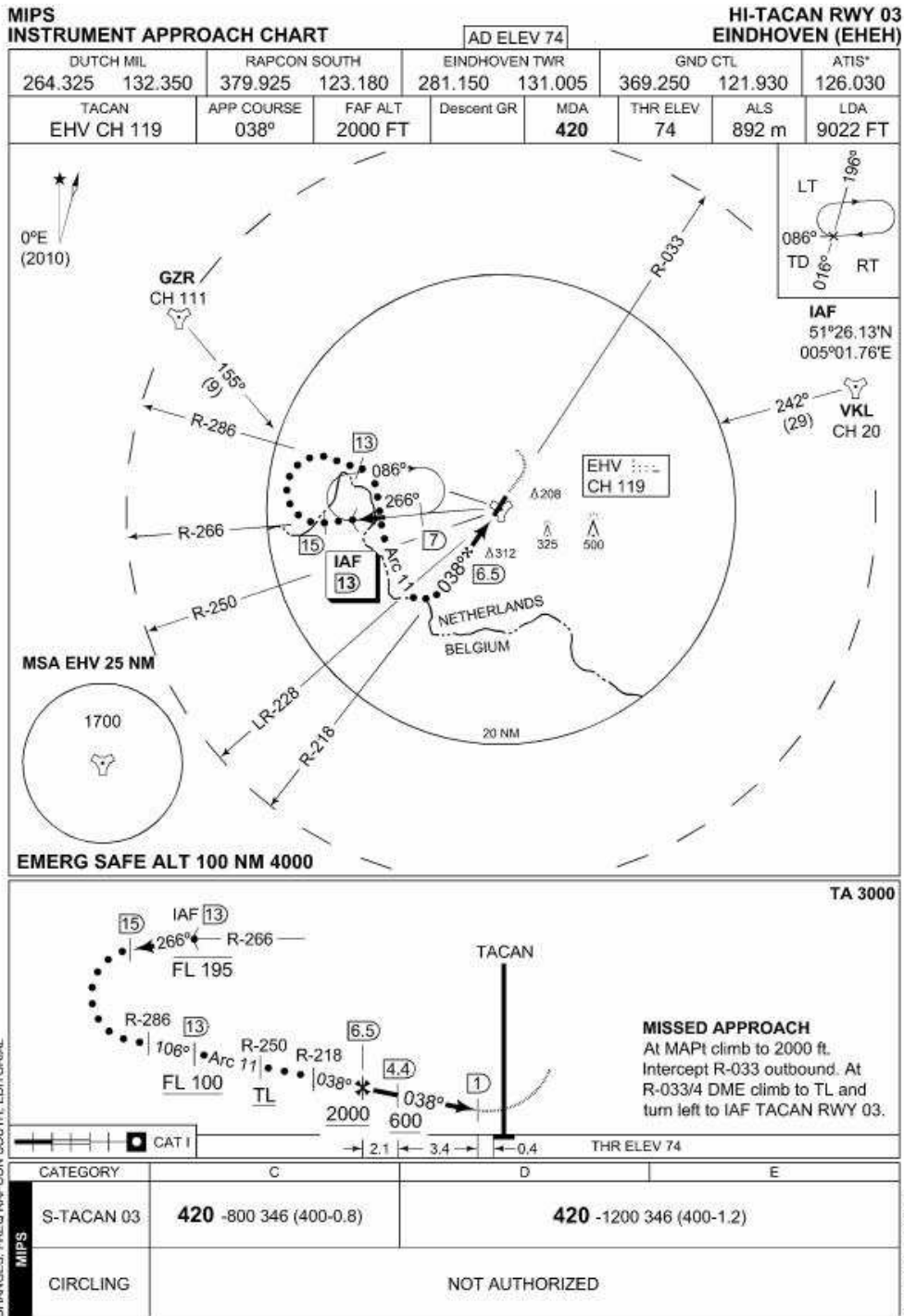
MIPS INSTRUMENT APPROACH CHART **ILS/DME Z or LOC RWY 03 EINDHOVEN (EHEH)**

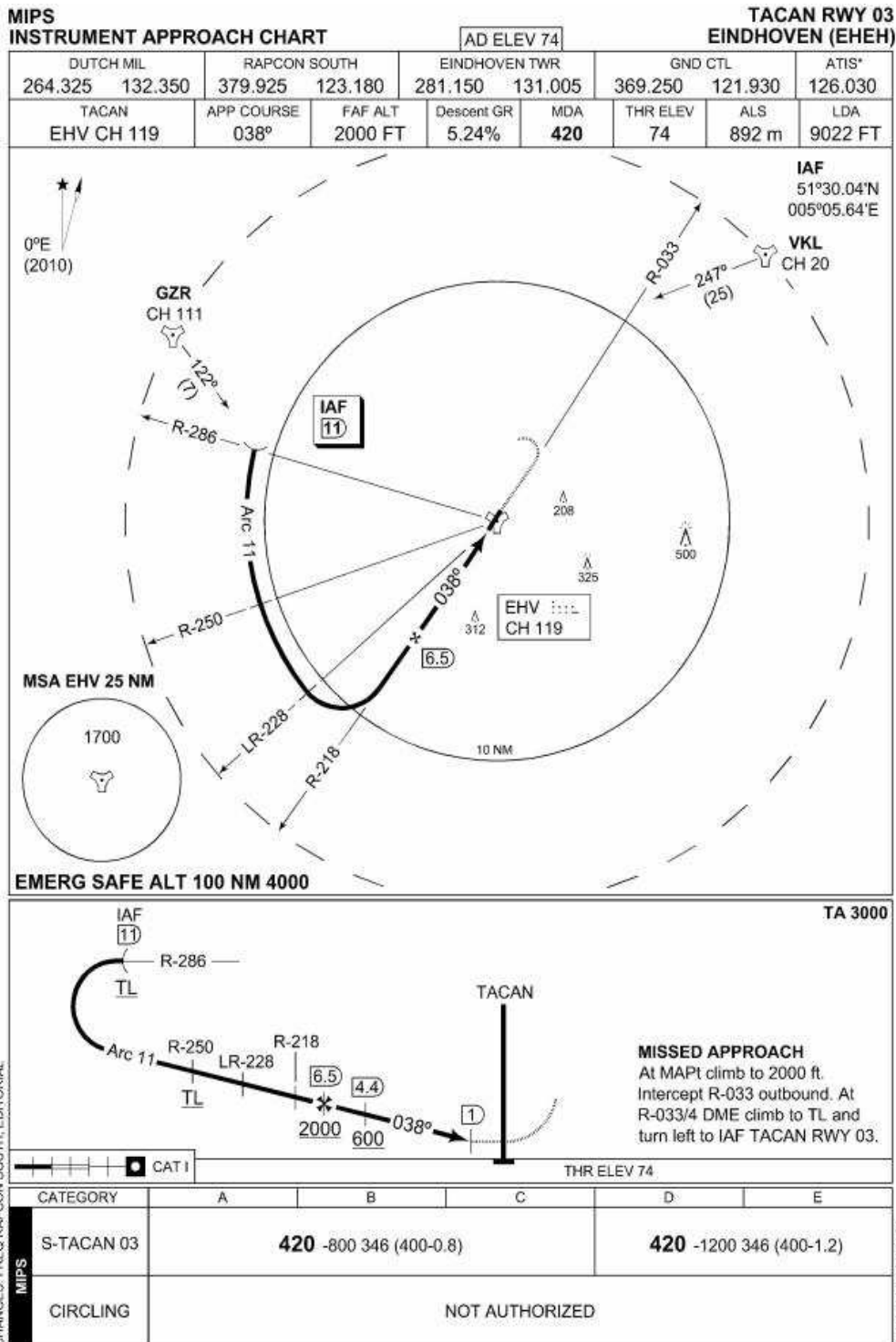


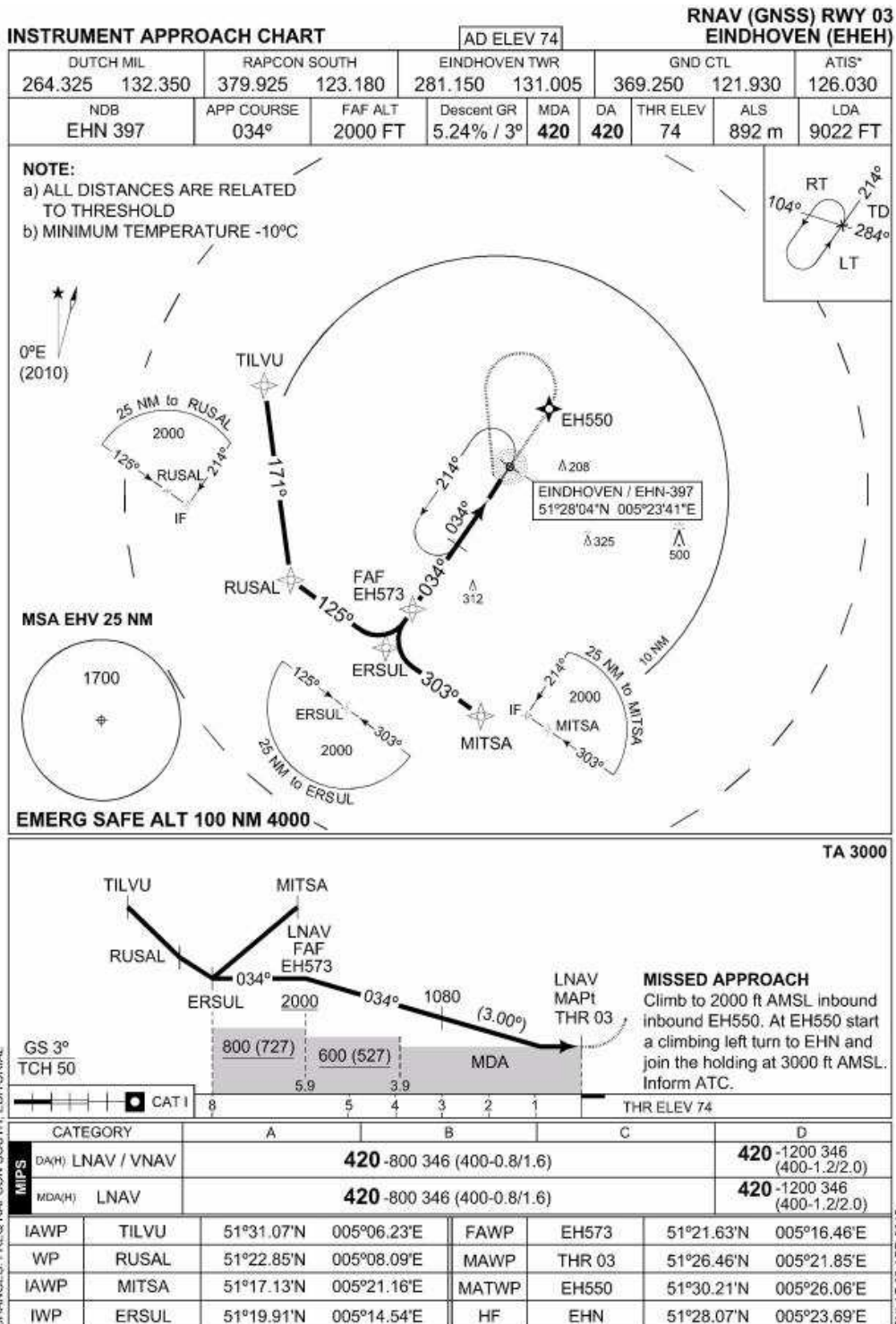
| CATEGORY | A | B | C | D | E |
|----------|------------------------|---|---|-------------------------|------------------------|
| S-ILS 03 | 274 -800 200 (200-0.8) | | | | 288 -800 214 (300-0.8) |
| S-LOC 03 | 420 -800 346 (400-0.8) | | | 420 -1200 346 (400-1.2) | |
| CIRCLING | NOT AUTHORIZED | | | | |

CHANGES: PROCEDURE NAME CHANGED

RNLAF 23 JUL 2015

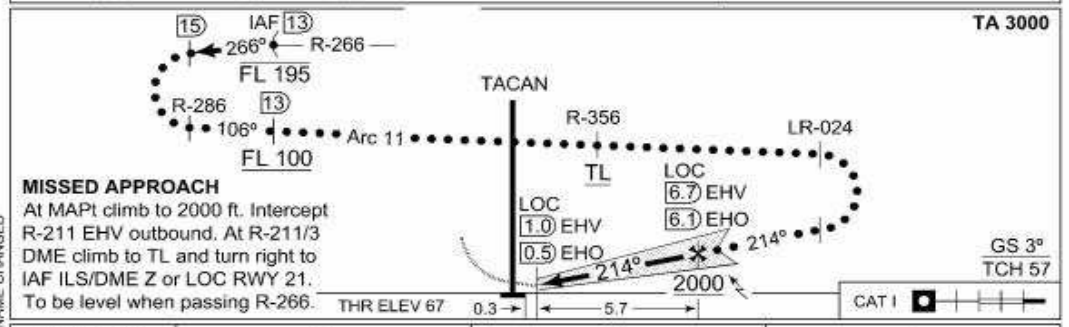
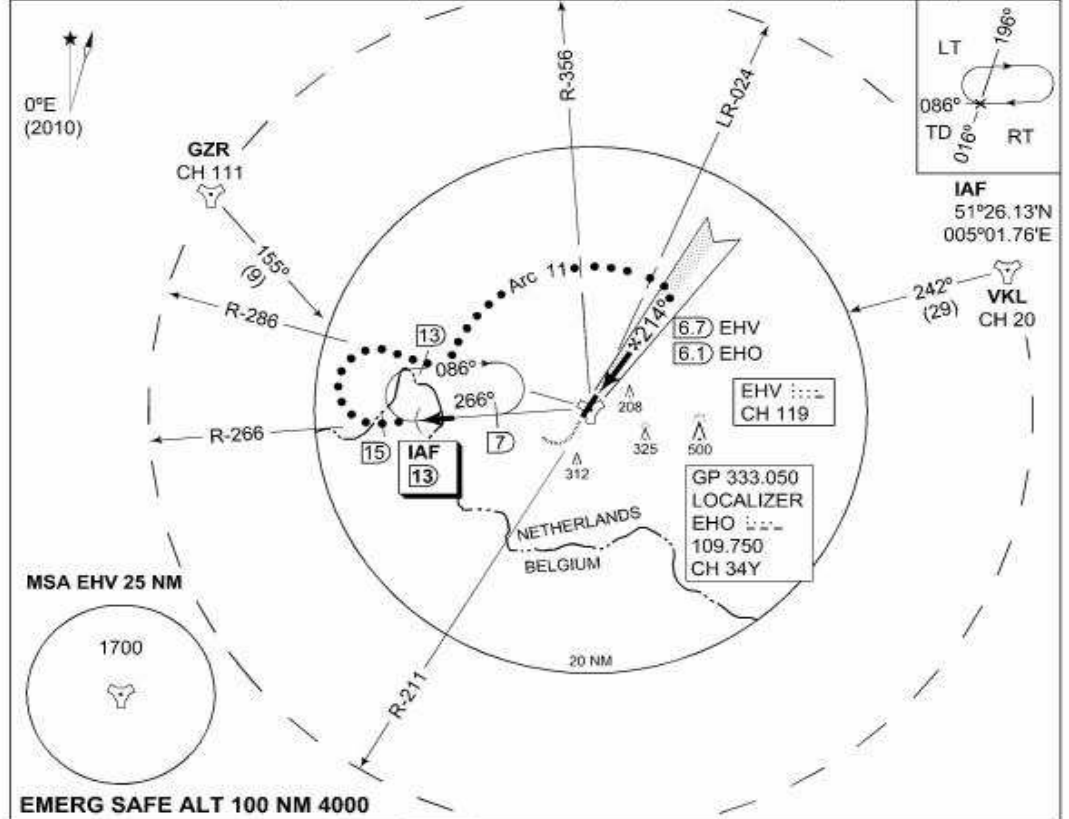






MIPS INSTRUMENT APPROACH CHART **HI-ILS/DME or LOC RWY 21 EINDHOVEN (EHEH)**

| | | | | | | | | | |
|---------------------------------------|--|---------------------------------|--|----------------------------------|--|----------------------------|--|----------------------|--|
| DUTCH MIL 264.325 132.350 | | RAPCON SOUTH 379.925 123.180 | | EINDHOVEN TWR 281.150 131.005 | | GND CTL 369.250 121.930 | | ATIS* 126.030 | |
| LOCALIZER/DME EHO 109.750 / CH 34Y | | APP COURSE 214° | | GS INTCP ALT 2000 FT | | GS 3° | | DA SEE CAT | |
| | | | | | | THR ELEV 67 | | ALS 869 m | |
| | | | | | | | | LDA 9022 FT | |

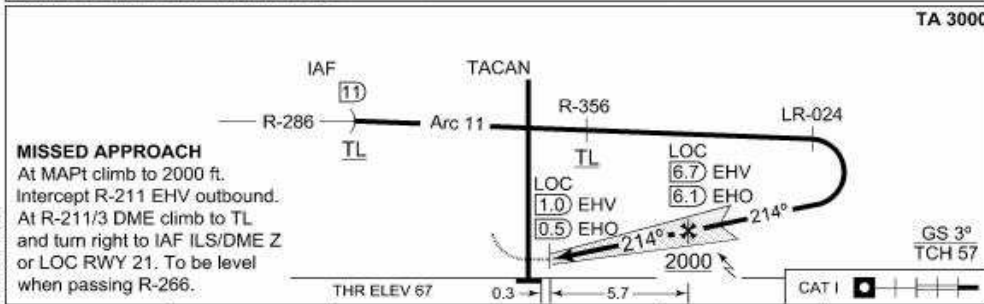
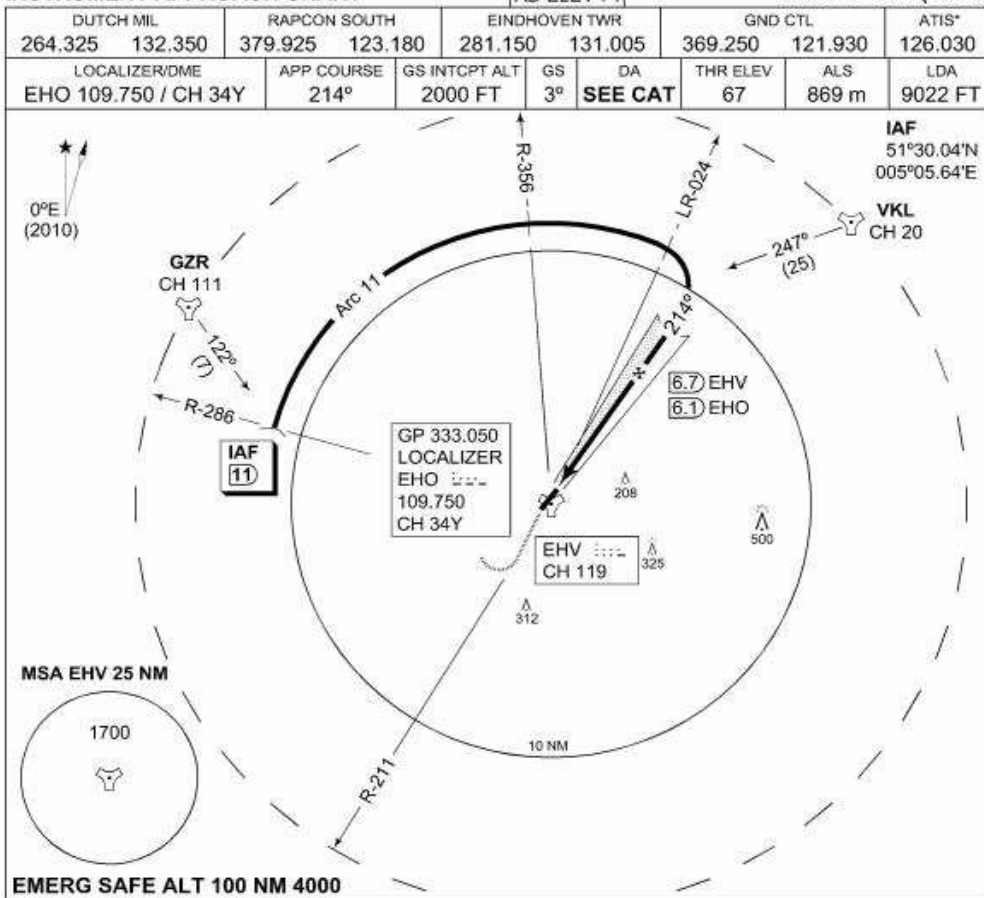


| MIPS | CATEGORY | C | D | E |
|------|----------|--------------------------|--------------------------|-------------------------|
| | S-ILS 21 | 267 - 800 200 (200-0.8) | | 275 - 800 208 (300-0.8) |
| | S-LOC 21 | 500 - 1200 433 (500-1.2) | 500 - 1600 433 (500-1.6) | |
| | CIRCLING | NOT AUTHORIZED | | |

CHANGES: PROCEDURE NAME CHANGED

RNLAF 23 JUL 2015

MIPS INSTRUMENT APPROACH CHART **ILS/DME Z or LOC RWY 21 EINDHOVEN (EHEH)**



| CATEGORY | A | B | C | D | E |
|----------|-------------------------------|--------------------------------|---|--------------------------------|-------------------------------|
| S-ILS 21 | 267 -800 200 (200-0.8) | | | | 275 -800 208 (300-0.8) |
| S-LOC 21 | 500 -800 433 (500-0.8) | 500 -1200 433 (500-1.2) | | 500 -1600 433 (500-1.6) | |
| CIRCLING | NOT AUTHORIZED | | | | |

CHANGES: PROCEDURE NAME CHANGED

PNLAF 23 JUL 2015

