

GILZE RIJEN

EHGR AD 2.1 Aerodrome location indicator and name

EHGR - Gilze-Rijen

EHGR AD 2.2 Geographical and administrative data

| | | |
|---|---|---|
| 1 | ARP | 51°34'02.56"N 004°55'54.61"E |
| 2 | Direction and distance from city | 280° MAG/6.1 NM TILBURG |
| 3 | Elevation/Reference temperature | + 49 ft AMSL/22.1° C (JUL) |
| 4 | MAG VAR/Annual change | 0°49'E (JAN 2015)/9'E |
| 5 | AD operating authority Postal address Visitors' address Telephone Telefax AFTN | RNLAF DHC Vliegbasis Gilze-Rijen MPC 89A P.O. Box 8762 4820 BB Breda Rijksweg 121 5121 RD Rijen +31(0)161 296523 +31(0)161 296525 EHGRZPZX |
| 6 | Types of TFC permitted (IFR/VFR) | IFR/VFR |
| 7 | Remarks | Nil |

EHGR AD 2.3 Operational hours

| | | |
|----|----------------------------|-----------------------|
| 1 | AD OPR HR | 0800/1530 (0700/1430) |
| 2 | Customs and immigration | 30 MIN PN |
| 3 | Health and sanitation | HO |
| 4 | AIS Briefing office | See 2.23 |
| 5 | ATS Reporting Office (ARO) | See 2.23 |
| 6 | MET Briefing Office | HO |
| 7 | ATS | HO |
| 8 | Fuelling | HO |
| 9 | Handling | HO |
| 10 | Security | HO |
| 11 | De-icing | Nil |
| 12 | Remarks | PPR 24 HRS See 2.23 |

EHGR AD 2.4 Handling services and facilities

| | | |
|---|--------------------------------|-----------------------|
| 1 | Cargo-handling facilities | Yes |
| 2 | Fuel/oil types | F-34, F-18, H-515 |
| 3 | Fuelling facilities/capacity | No limitations |
| 4 | Oxygen | Nil |
| 5 | De-icing facilities/type | Nil |
| 6 | Starting units | DSA 150, DSA 600, JAS |
| 7 | Hangar space for visiting ACFT | Limited |
| 8 | Repair facilities | AH64, AS32, H47 |
| 9 | Remarks | Nil |

EHGR AD 2.5 Passenger facilities

| | | |
|---|--------------------|----------------------------|
| 1 | Remain overnight | AVBL O/R |
| 2 | Medical facilities | Medical officer, ambulance |
| 3 | Remarks | Nil |

EHGR AD 2.6 Rescue and fire fighting services

| | | |
|---|-------------------------------|------------|
| 1 | AD category for fire fighting | NATO CAT 7 |
| 2 | Remarks | Nil |

EHGR AD 2.7 Seasonal availability - clearing

| | | |
|---|------------------------|---|
| 1 | Seasonal availability | All seasons |
| 2 | Snow removal equipment | Yes |
| 3 | Remarks | Caution advised in winter during ice conditions |

EHGR AD 2.8 Aprons, taxiways and check locations/positions data

| | | |
|---|---------------------------------|---|
| 1 | Apron surface and strength | Concrete, 298: PCN 47 R/C/W/T 300: PCN 36 R/C/W/T 301: PCN 27 R/C/W/T Vis: PCN 27 R/C/W/T |
| 2 | TWY width, surface and strength | Width 39 ft, tarmac/concrete, PCN 45 R/C/W/T |
| 3 | Remarks | Nil |

EHGR AD 2.9 Surface movement guidance and control system and markings

| | | |
|-----------------------|---------|-----|
| According STANAG 3158 | | |
| 1 | Remarks | Nil |

EHGR AD 2.10 Aerodrome obstacles

Obstacles along RWYs and TWYs are not conform to standard obstacle clearance requirements. Further details in Aerodrome Chart.

EHGR AD 2.11 Meteorological information provided

| | | |
|---|---|--|
| 1 | Associated MET Office | Gilze-Rijen |
| 2 | Hours of service MET Office outside hours | HO Joint MET Group |
| 3 | Office responsible for TAF preparation Periods of validity | Joint MET Group 12 HRS |
| 4 | Type of landing forecast Interval of issuance | Colourstate trend forecast 1/2 Hourly |
| 5 | Flight documentation Language(s) used | Charts, abbreviated plain language text English/Dutch |
| 6 | Charts and other information AVBL for briefing or consultation | SWC, prognostic upper air chart, radar satellite images |
| 7 | Supplementary equipment AVBL for providing information | E-mail: P56588@mindef.nl |
| 8 | Remarks | Tel. Gilze-Rijen: +31(0)161 296551 Tel. Joint MET Group: +31(0)164 693111 |

EHGR AD 2.12 Runway physical characteristics

| | | |
|---|-----------------------|--|
| 1 | RWY dimensions/a-gear | See Aerodrome Chart. Values in ft. |
| 2 | RWY surface | Tarmac/concrete |
| 3 | RWY strength | PCN: RWY 10: 55 F/A/W/T RWY 28: 55 F/A/W/T RWY 02: 55 F/A/W/T RWY 20: 55 F/A/W/T |

EHGR AD 2.13 Declared distances

| |
|------------------------------------|
| See Aerodrome Chart. Values in ft. |
|------------------------------------|

EHGR AD 2.14 Approach and runway lighting

| | | |
|-----------------------|-------------------|---|
| According STANAG 3316 | | |
| 1 | Approach lighting | RWY 28: CAT I. 780 m RWY 10: SALS. 420 m RWY 20: Nil RWY 02: Nil |
| 2 | RWY lighting | RWY 10/28 VCL/ VHI, RWY 02/20 VHI |
| 3 | PAPI | Situated on the left side of RWY 10/28 |
| 4 | Remarks | Nil |

EHGR AD 2.15 Other lighting, secondary power supply

| | | |
|---|------------------------------------|---------------------------------------|
| 1 | LDI | Lighted |
| 2 | TWY edge lighting | VB |
| 3 | Emergency RWY lighting | Moskit type 2 (according STANAG 3534) |
| 4 | Emergency TWY edge lighting | Retroreflective markers |
| 5 | Secondary power supply/switch-over | AVBL, switch over time 15 seconds |
| 6 | Remarks | Nil |

EHGR AD 2.16 Helicopter landing area

| | | |
|---|----------|---|
| 1 | Location | Centre of the north-west corner RWY 10/28 and 02/20 |
| 2 | Marking | Daylight marking |
| 3 | Lighting | Yes, non NATO standard |
| 4 | Remarks | Nil |

EHGR AD 2.17 Air traffic services airspace

| | | |
|---|-----------------------------------|--|
| 1 | Designation and lateral limits | Gilze-Rijen control zone 51°29'58.19"N 004°47'48.26"E; along clockwise arc (radius 6.5 NM, centre 51°34'02.56"N 004°55'54.61"E) to 51°28'56.13"N 005°02'20.09"E; along Dutch-Belgian border to 51°28'14.92"N 005°00'36.24"E; along clockwise arc (radius 6.5 NM, centre 51°34'02.56"N 004°55'54.61"E) to 51°28'32.16"N 004°50'23.92"E; along Dutch-Belgian border to point of origin. |
| 2 | Vertical limits | GND to 3000 ft AMSL |
| 3 | Airspace classification | D |
| 4 | ATS unit call sign Language(s) | Contact initially Gilze-Rijen TWR, outside HO Dutch Mil Info FREQ 132.350 MHz. English |
| 5 | Transition altitude | IFR: 3000 ft AMSL; VFR: 3500 ft AMSL |
| 6 | Remarks | Nil |

EHGR AD 2.18 Air traffic services communication facilities

| STATION/ SERVICE | CALL SIGN OR IDENTIFICATION | FREQUENCY MHz | HOURS | REMARKS |
|---------------------|--------------------------------|--|-------|---|
| 1 | 2 | 3 | 4 | 5 |
| | As appropriate | 121.500 243.000 | HO | Emergency FREQ for all services |
| TWR | Gilze-Rijen Tower | 125.330*) 122.100 369.500*) 257.800 | HO | *) Primary FREQ Outside HO contact Dutch Mil Info 132.350 MHz |
| GND CTL | Gilze-Rijen Ground | 121.680 234.925 | HO | |
| APP | Rapcon West | 123.580 281.475 | HO | Radar equipped |
| | Gilze Arrival | 123.580 373.375 | HO | Through APP |
| | Gilze Monitor | 134.480 | HO | Nieuw Milligen TMA D1 |

EHGR AD 2.19 Radio navigation and landing aids

| FACILITY | ID | CHANNEL FREQ. | HOURS | CO-ORD. | RANGE/ ALTITUDE | REMARKS |
|------------------|-----|------------------|-------|---------------------------------|--------------------|---------------------------|
| 1 | 2 | 3 | 4 | 5 | 6 | 7 |
| TACAN | GZR | CH 111X | H24 | 51°33'57.73"N 004°56'00.68"E | 40 NM/ 25000 ft | FREQ protected |
| ILS LOCALIZER | GZO | 111.900 | H24 | 51°34'11.49"N 004°54'34.82"E | | ILS-antenna 55 ft AMSL |
| GLIDEPATH | | 331.100 | | 51°33'54.24"N 004°56'42.50"E | | |
| DME | | CH 56X | H24 | 51°33'54.24"N 004°56'42.50"E | | |

EHGR AD 2.20 Local traffic regulations

Glider- and Light ACFT flying

Glider- and light ACFT flying outside OPR HR SR/SS.

EHGR AD 2.21 Noise abatement procedures

Noise abatement procedures in the CTR. Except for tactical entries during rejoining and landing-procedures flying with a speed of 300 KTS or more is forbidden. Unless safety- or operational reasons dictate otherwise the use of afterburner is prohibited. No practice-approaches are to be made after 2100 (2000) HRS. VFR and IFR departure/approach procedures are projected in such a way that noise hindrance is minimized as much as possible.

EHGR AD 2.22 Flight procedures

IFR procedures

The IAP and SID procedures are established in accordance with STANAG 3759 and AATCP-1.

VFR procedures

APPROACH PROCEDURES FOR JET ACFT (for RWY 10/28 only):

Approach at 2000 ft AGL from the NE intercepting inbound R-045 GZR TACAN. Report at 6.5 DME (reporting point 'the Kets'). Maintain 2000 ft AGL and proceed to over-head GZR TACAN. For RWY 28 turn left to IP, followed by a L/H circuit at 1500 ft AGL. For RWY 10 turn right to IP, followed by a R/H circuit at 1500 ft AGL.

DEPARTURE PROCEDURES FOR JET ACFT:

RWY 28: Maintain RWY heading until reaching 500 ft AMSL. Do not exceed 1000 ft AMSL over the RWY. Turn left to 240° magnetic climbing to 1500 ft AMSL; maintain heading until abeam Ulvenhout.

RWY 10: Maintain RWY heading until reaching 500 ft AMSL. Do not exceed 1000 ft AMSL over the RWY. Turn right to 145° magnetic climbing to 1500 ft AMSL; maintain heading until abeam Goirle.

LIGHT ACFT AND CONVENTIONAL ACFT

Approach and depart the CTR at least at 500 ft AMSL. Circuit instructions will be provided by ATC.

HELICOPTERS

There are 4 helicopter initial (reporting) points, at 1000 ft AMSL. After the IP, circuit instructions will be provided by ATC.

REPORTING POINTS:

- | | |
|-------------------|---|
| IP Northwest (NW) | The most northern tip of a pond 51°36'22.00"N 004°52'16.00"E. |
| IP Northeast (NE) | The north-easterly corner of the tree line just south of the Wilhelminakanaal 51°36'16.00"N 004°58'12.00"E. |
| IP Southeast (SE) | The bend in the road 500 metres southwest of the village of Riel 51°31'09.00"N005°00'42.00"E. |
| IP Southwest (SW) | The bend in the road 2 km southeast of the village of Ulvenhout 51°31'54.00"N004°49'33.00"E. |

EHGR AD 2.23 Additional information

AIS Briefing office facility and the ATS Reporting Office (ARO) is only available through the Flight Data and Notam Office (FDNO) located at AOCS Nieuw Milligen.

Tel: +31(0)577 458336/8781

Fax: +31(0)577 456523

E-mail: aocs.fdns@mindef.nl

AFTN: EHMCZPZX
avlbl H24

PPR 24 HRS:for Prior Permission Request contact:
Operational and Co-ordination Centre

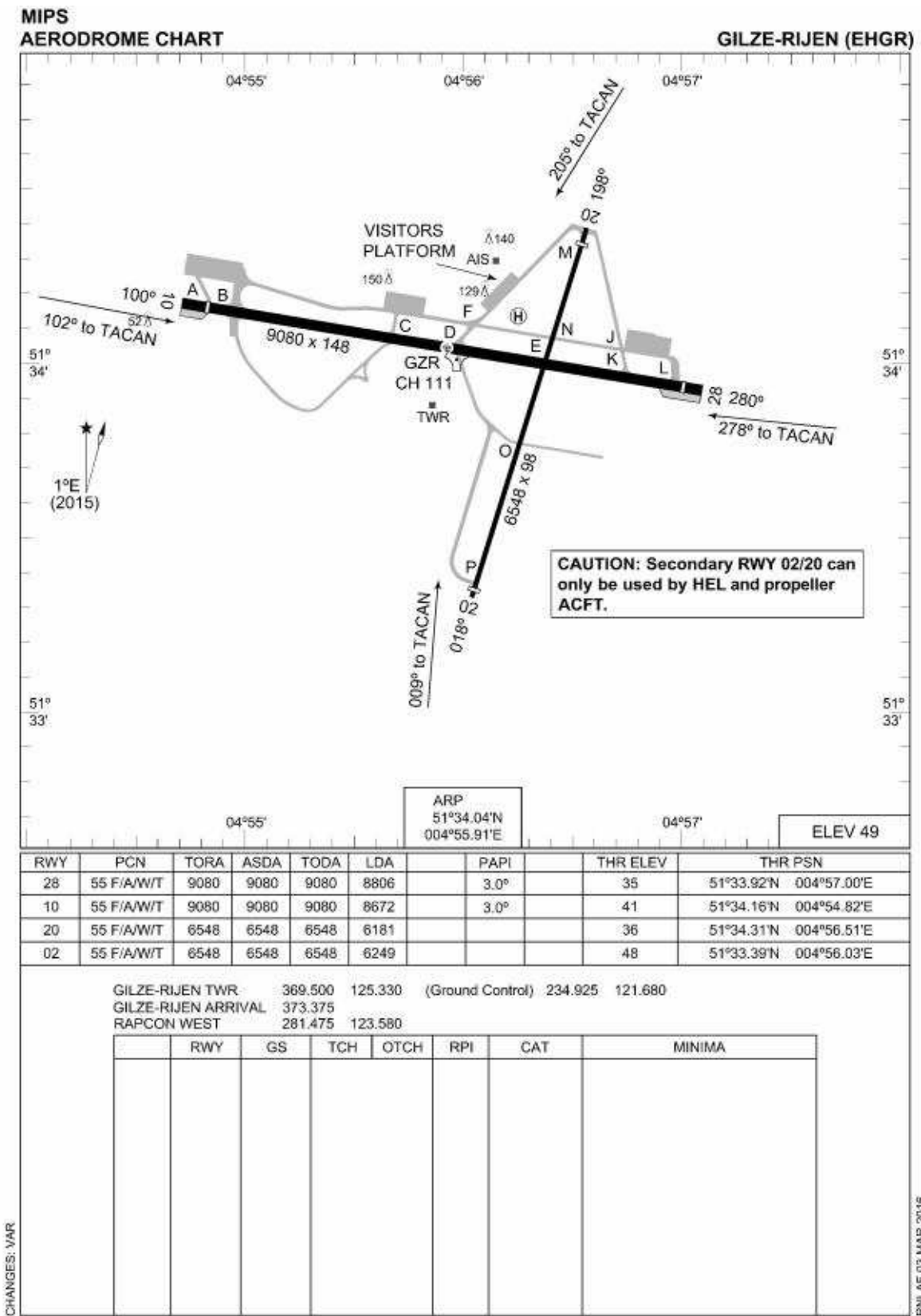
Tel: +31(0)161 296770

Fax: +31(0)161 296785

E-mail: dhc.sopp.occ@mindef.nl

EHGR AD 2.24 Charts related to an aerodrome

| | |
|---|--------------|
| Aerodrome Chart | EHGR AD 2-9 |
| Local map | EHGR AD 2-10 |
| Instrument departure chart GR1 | EHGR AD 2-11 |
| Instrument departure chart GR3 | EHGR AD 2-12 |
| Instrument approach chart COPTER TACAN 009 | EHGR AD 2-13 |
| Instrument approach chart HI-TACAN RWY 10 | EHGR AD 2-14 |
| Instrument approach chart TACAN RWY 10 | EHGR AD 2-15 |
| Instrument approach chart COPTER TACAN 102 | EHGR AD 2-16 |
| Instrument approach chart COPTER TACAN 205 | EHGR AD 2-17 |
| Instrument approach chart ILS OR LOC RWY 28 | EHGR AD 2-18 |
| Instrument approach chart HI-TACAN RWY 28 | EHGR AD 2-19 |
| Instrument approach chart TACAN RWY 28 | EHGR AD 2-20 |
| Instrument approach chart COPTER TACAN 278 | EHGR AD 2-21 |



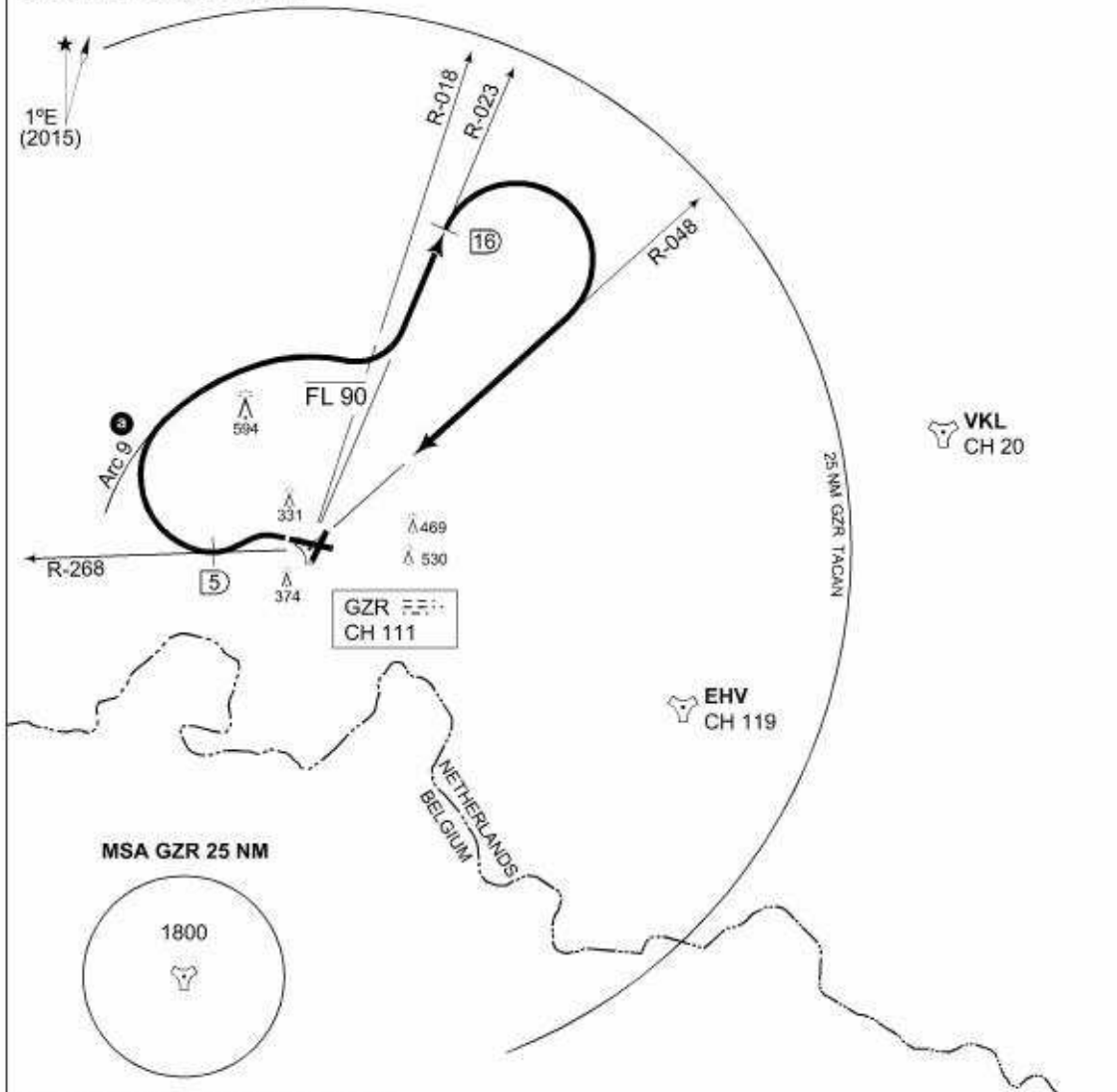
LOCAL MAP



TERPS INSTRUMENT DEPARTURE CHART **GR1 GILZE-RIJEN (EHGR)**

| | | | | | | | | | | | |
|----------------------------|--|------------------------------------|--|--------------------------------|-----------|-----|-----|------------------------------|------|------|--------|
| GND CTL 234.925 121.680 | | GILZE-RIJEN TWR 369.500 125.330 | | RAPCON WEST 281.475 123.580 | | | | DUTCH MIL 264.325 132.350 | | | |
| | | | | RWY | Knots | 120 | 180 | 240 | 300 | 360 | to |
| | | | | 28 | V/V (fpm) | 480 | 720 | 960 | 1200 | 1440 | 150 ft |

NOTE:
a DO NOT EXCEED 10 DME



EMERG SAFE ALT 100 NM 4000 **TA 3000**

| | |
|--------------------------------------|---|
| <p>GILZE-RIJEN 1 (RWY 28)</p> | <ul style="list-style-type: none"> - At 1.3 DME turn left to intercept R-268 outbound, level off at FL 90. - At 5 DME turn right to intercept Arc 9. - Intercept R-023 outbound, when crossing R-018 continue climb. - At 16 DME turn right to intercept R-048 inbound. |
|--------------------------------------|---|

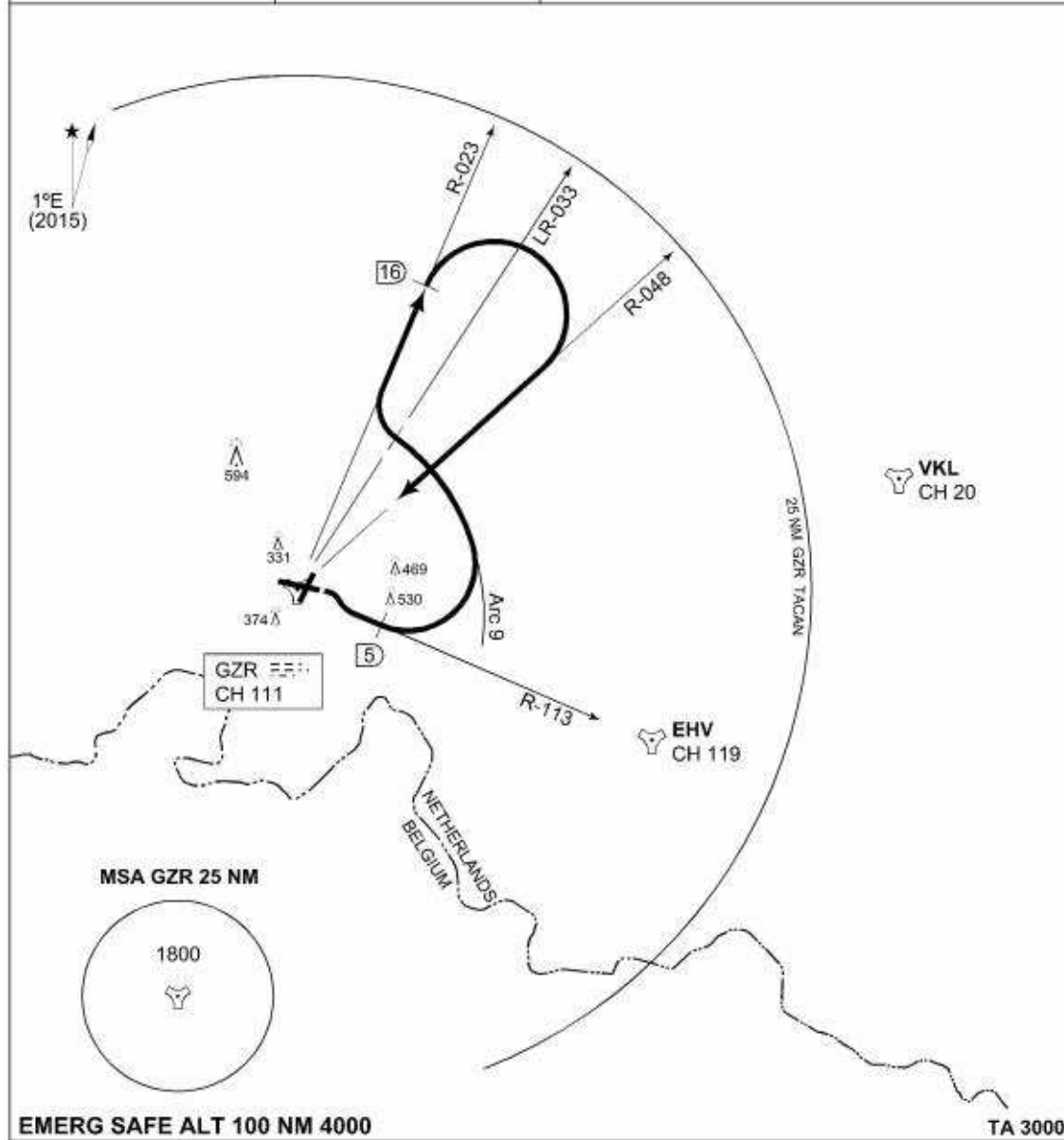
CHANGE: VAR

RNLAF 03 MAR 2016

TERPS INSTRUMENT DEPARTURE CHART **GR3 GILZE-RIJEN (EHGR)**

| | | | | | | | |
|---------|---------|-----------------|---------|-------------|---------|-----------|---------|
| GND CTL | | GILZE-RIJEN TWR | | RAPCON WEST | | DUTCH MIL | |
| 234.925 | 121.680 | 369.500 | 125.330 | 281.475 | 123.580 | 264.325 | 132.350 |

AD ELEV 49



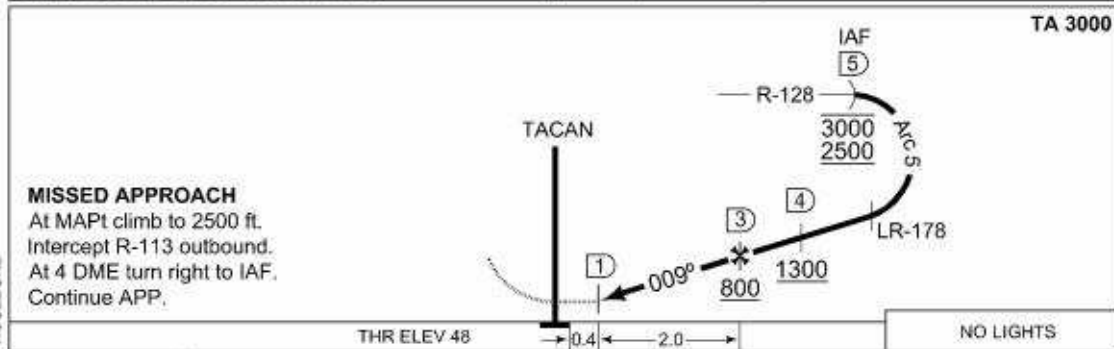
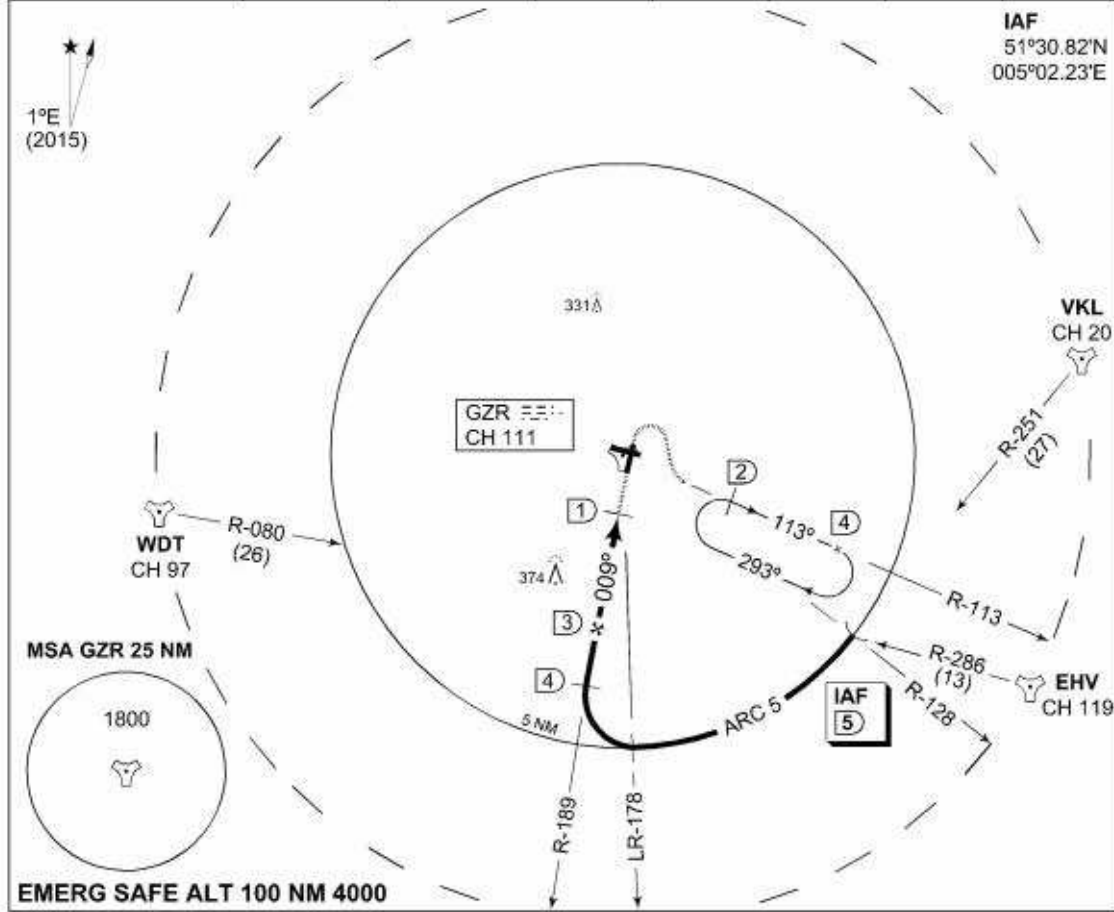
| | |
|--------------------------------------|---|
| <p>GILZE-RIJEN 3 (RWY 10)</p> | <ul style="list-style-type: none"> - At 1 DME turn right to intercept R-113 outbound. - At 5 DME turn left to intercept Arc 9. - When crossing R-033 turn right to intercept R-023 outbound. - At 16 DME turn right to intercept R-048 inbound. |
|--------------------------------------|---|

CHANGES: VAR

RNLAF 03 MAR 2016

MIPS INSTRUMENT APPROACH CHART AD ELEV 49 **COPTER TACAN 009 GILZE-RIJEN (EHGR)**

| | | | | | | | |
|------------------------------|--------------------|--------------------------------|------------|------------------------------------|----------------|----------------------------|----------------|
| DUTCH MIL 264.325 132.350 | | RAPCON WEST 281.475 123.580 | | GILZE-RIJEN TWR 369.500 125.330 | | GND CTL 234.925 121.680 | |
| TACAN GZR CH 111 | APP COURSE 009° | FAF ALT 800 FT | Descent GR | MDA 460 | THR ELEV 48 | ALS - | LDA 6249 FT |



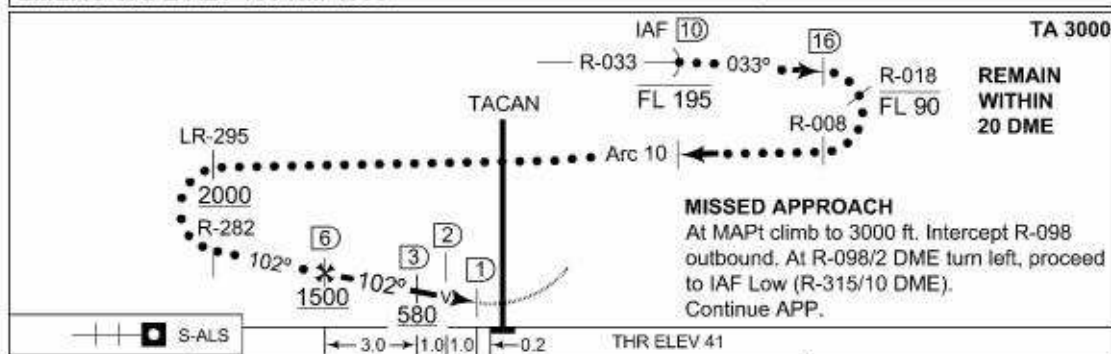
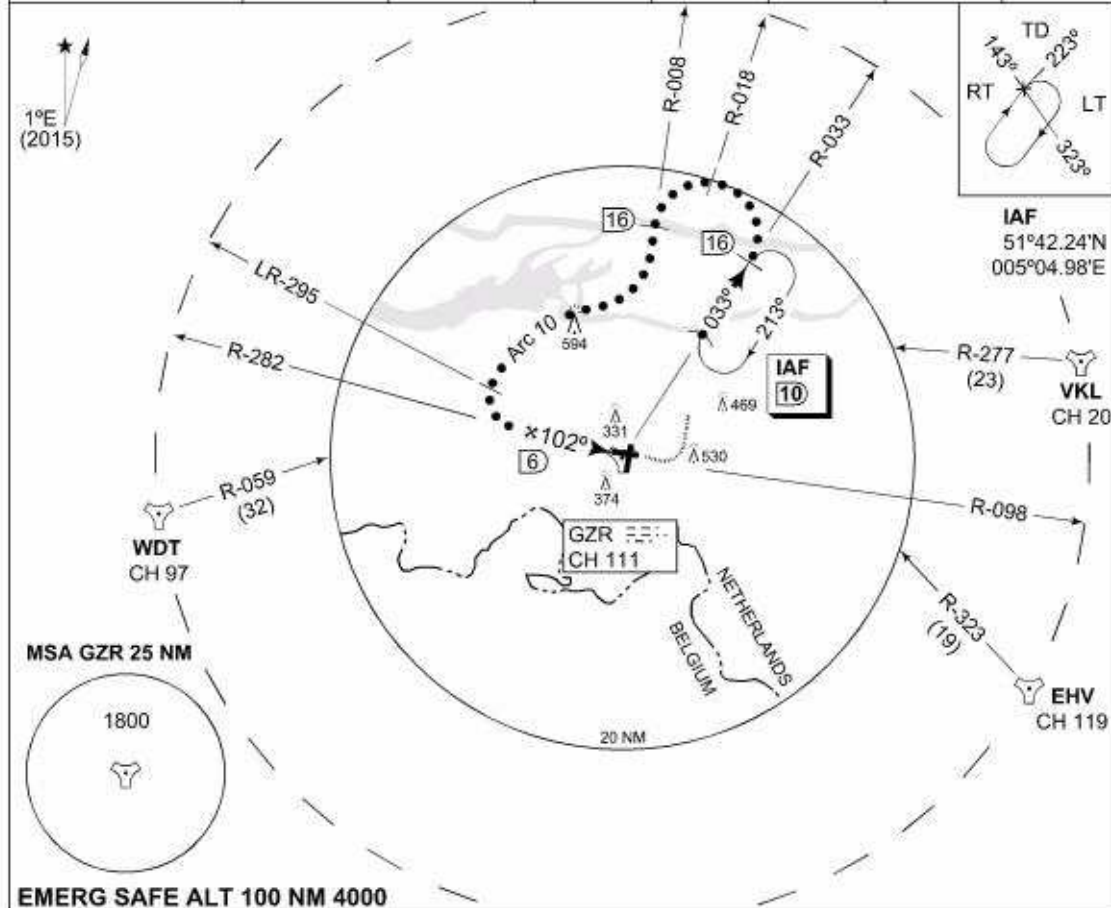
| | | |
|------|-------------|-------------------------|
| | CATEGORY | COPTER |
| MIPS | S-TACAN 009 | 460 -800 412 (500-0.8) |
| | CIRCLING | 540 -1900 491 (500-1.9) |

CHANGES: VAR, RENAME PROCEDURE

RNLAF 03 MAR 2016

MIPS INSTRUMENT APPROACH CHART **HI-TACAN RWY 10 GILZE-RIJEN (EHGR)**

| | | | | | | | |
|------------------------------|--|--------------------------------|--------------------|------------------------------------|------------|----------------------------|--------------|
| DUTCH MIL 264.325 132.350 | | RAPCON WEST 281.475 123.580 | | GILZE-RIJEN TWR 369.500 125.330 | | GND CTL 234.925 121.680 | |
| TACAN GZR CH 111 | | APP COURSE 102° | FAF ALT 1500 FT | Descent GR | MDA 440 | THR ELEV 41 | ALS 420 m |
| | | | | | | LDA 8672 FT | |



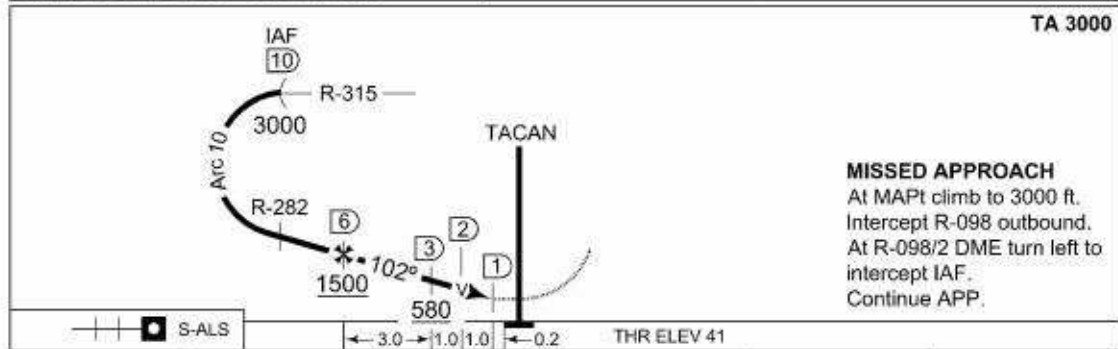
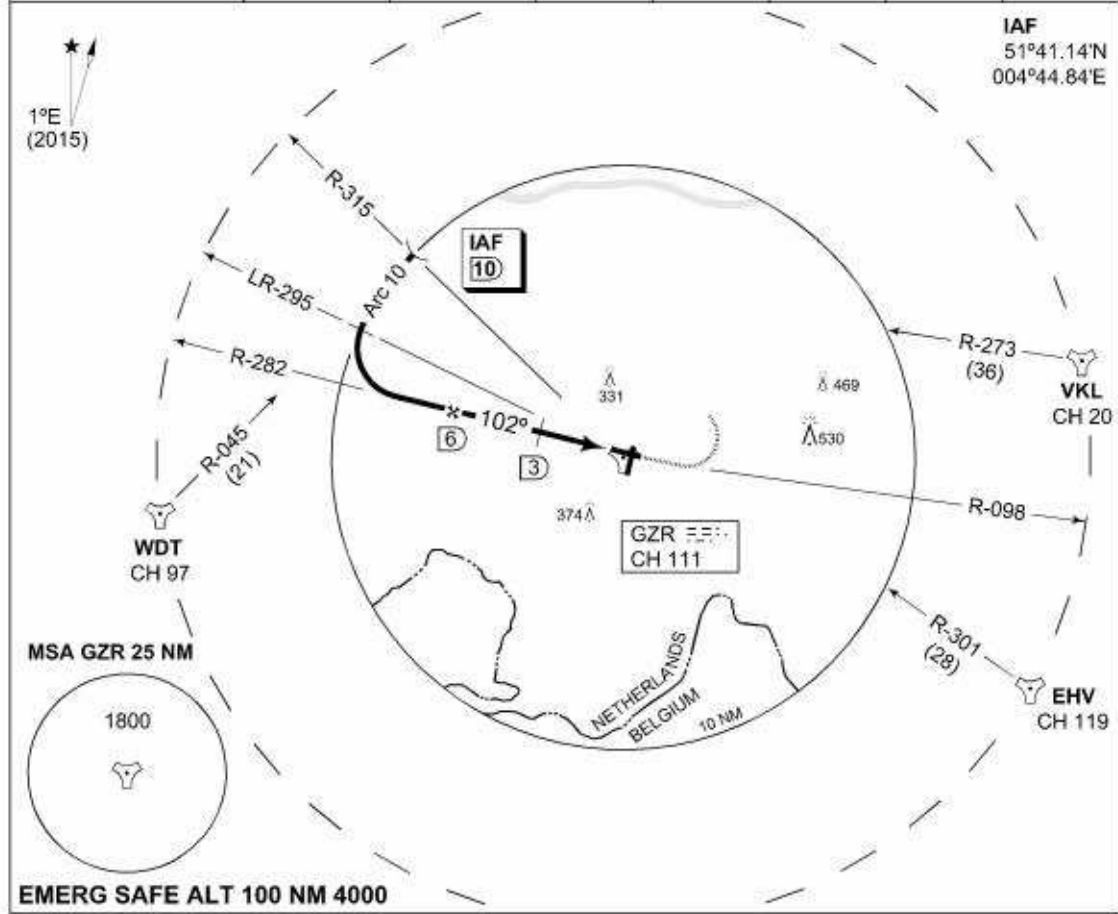
| CATEGORY | MINIMA ACCORDING TO PANS-OPS; NOT ACCORDING TO APATC-1 | | |
|------------|--|-------------------------|---------------------------|
| | C | D | E |
| S-TACAN 10 | 440 -1.6 399 (400-1.6) | | 440 -2.0 399 (400-2.0) |
| CIRCLING | 770 -3700 721 (800-3.7) | 910 -4600 861 (900-4.6) | 1000 -6500 951 (1000-6.5) |

CHANGES: VAR MIPS

RNLAF 03 MAR 2016

MIPS INSTRUMENT APPROACH CHART **TACAN RWY 10 GILZE-RIJEN (EHGR)**

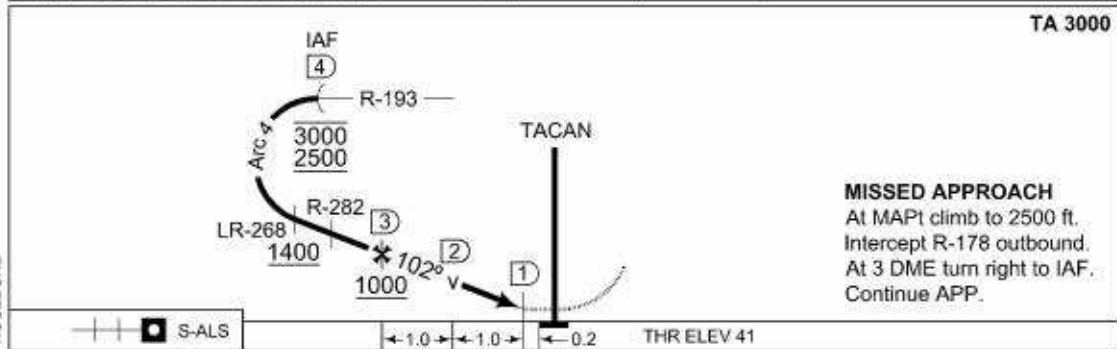
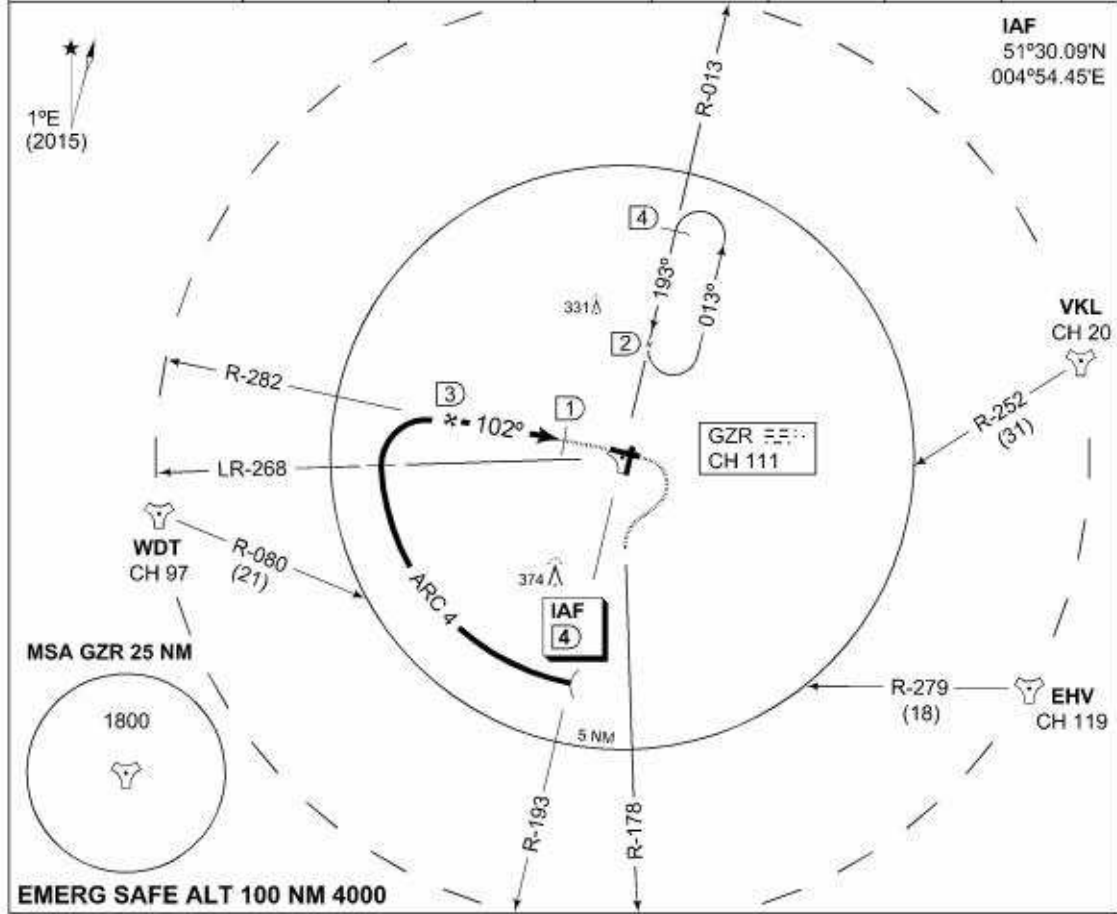
| | | | | | | | |
|------------------------------|--|--------------------------------|--------------------|------------------------------------|------------|----------------------------|----------------|
| DUTCH MIL 264.325 132.350 | | RAPCON WEST 281.475 123.580 | | GILZE-RIJEN TWR 369.500 125.330 | | GND CTL 234.925 121.680 | |
| TACAN GZR CH 111 | | APP COURSE 102° | FAF ALT 1500 FT | Descent GR | MDA 440 | THR ELEV 41 | LDA 8672 FT |



| CATEGORY | MINIMA ACCORDING TO PANS-OPS; NOT ACCORDING TO APATC-1 | | | | |
|------------|--|-------------------------|-------------------------|-------------------------|---------------------------|
| | A | B | C | D | E |
| S-TACAN 10 | 440 -1.6 399 (400-1.6) | | | | 440 -2.0 399 (400-2.0) |
| CIRCLING | 540 -1900 491 (500-1.9) | 670 -2800 621 (700-2.8) | 770 -3700 721 (800-3.7) | 910 -4600 861 (900-4.6) | 1000 -6500 951 (1000-6.5) |

MIPS INSTRUMENT APPROACH CHART **COPTER TACAN 102 GILZE-RIJEN (EHGR)**

| | | | | | | | |
|------------------------------|--------------------|--------------------------------|------------|------------------------------------|----------------|----------------------------|----------------|
| DUTCH MIL 264.325 132.350 | | RAPCON WEST 281.475 123.580 | | GILZE-RIJEN TWR 369.500 125.330 | | GND CTL 234.925 121.680 | |
| TACAN GZR CH 111 | APP COURSE 102° | FAF ALT 1000 FT | Descent GR | MDA 440 | THR ELEV 41 | ALS 420 m | LDA 8672 FT |



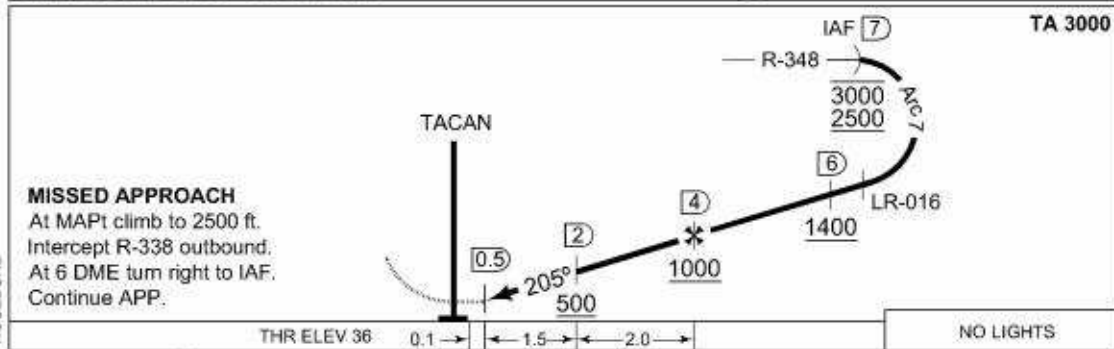
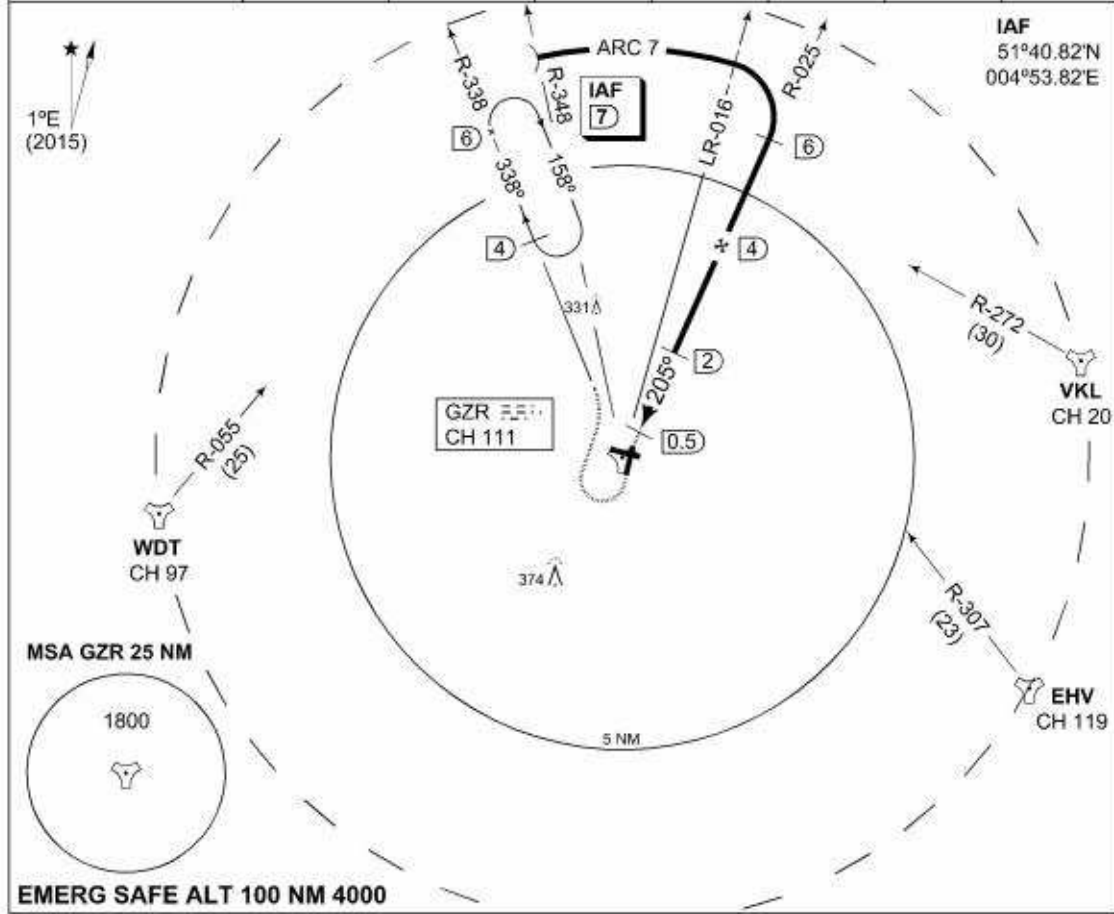
CHANGES: VAR, RENAME PROCEDURE

| | | | | | |
|-------------|-------------------------|-----|-----|-----|-------------|
| | S-ALS | 1.0 | 1.0 | 0.2 | THR ELEV 41 |
| CATEGORY | COPTER | | | | |
| S-TACAN 102 | 440 -400 399 (400-0.4) | | | | |
| CIRCLING | 540 -1900 491 (500-1.9) | | | | |

RNLAF 03 MAR 2016

MIPS INSTRUMENT APPROACH CHART **COPTER TACAN 205 GILZE-RIJEN (EHGR)**

| | | | | | | | |
|------------------------------|--------------------|--------------------------------|------------|------------------------------------|----------------|----------------------------|----------------|
| DUTCH MIL 264.325 132.350 | | RAPCON WEST 281.475 123.580 | | GILZE-RIJEN TWR 369.500 125.330 | | GND CTL 234.925 121.680 | |
| TACAN GZR CH 111 | APP COURSE 205° | FAF ALT 1000 FT | Descent GR | MDA 420 | THR ELEV 36 | ALS - | LDA 6181 FT |

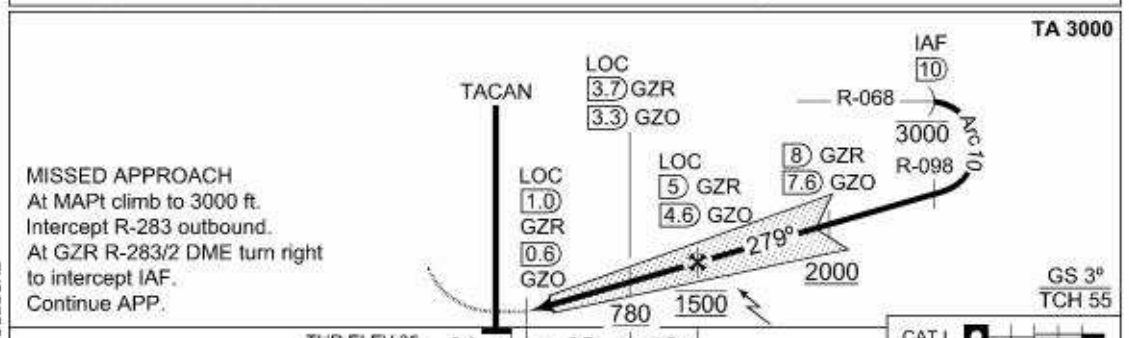
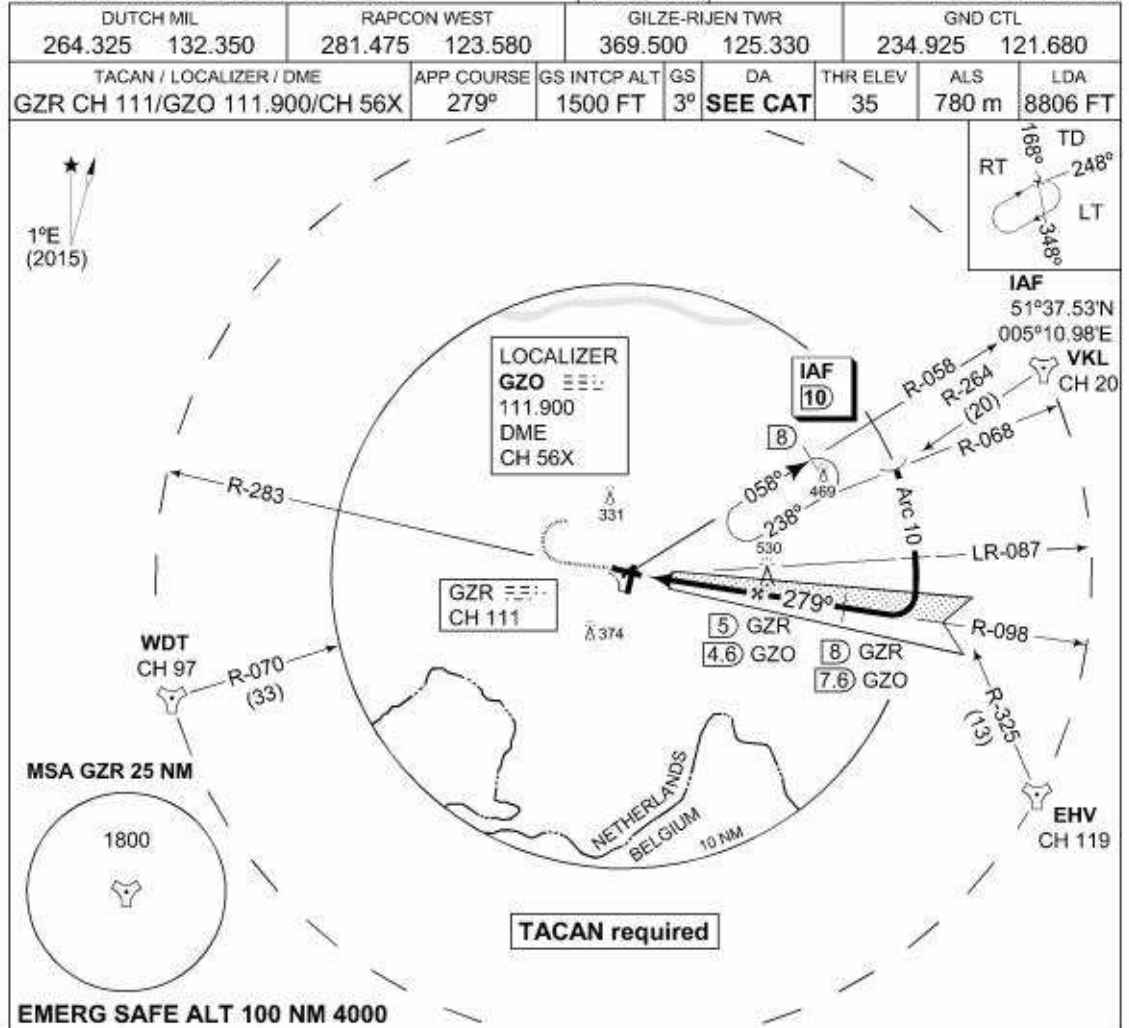


| | |
|---------------|--------------------------------|
| NO LIGHTS | |
| COPTER | |
| S-TACAN 205 | 420 -800 384 (400-0.8) |
| CIRCLING | 540 -1900 491 (500-1.9) |

CHANGES: VAR, RENAME PROCEDURE

RNLAF 03 MAR 2016

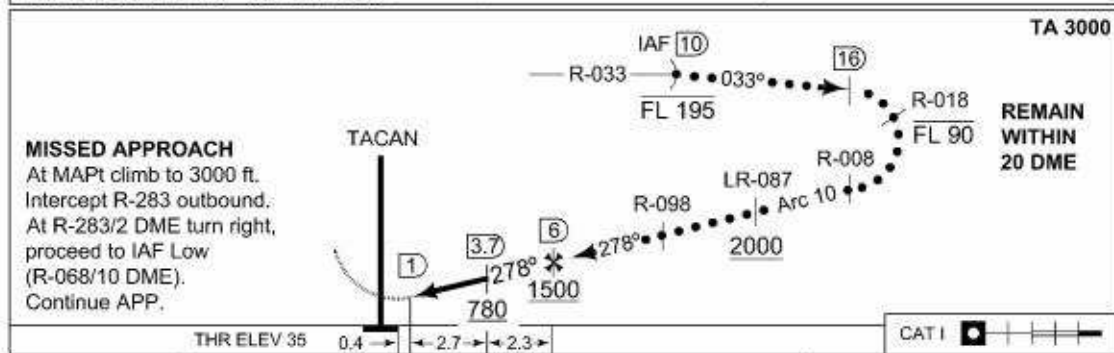
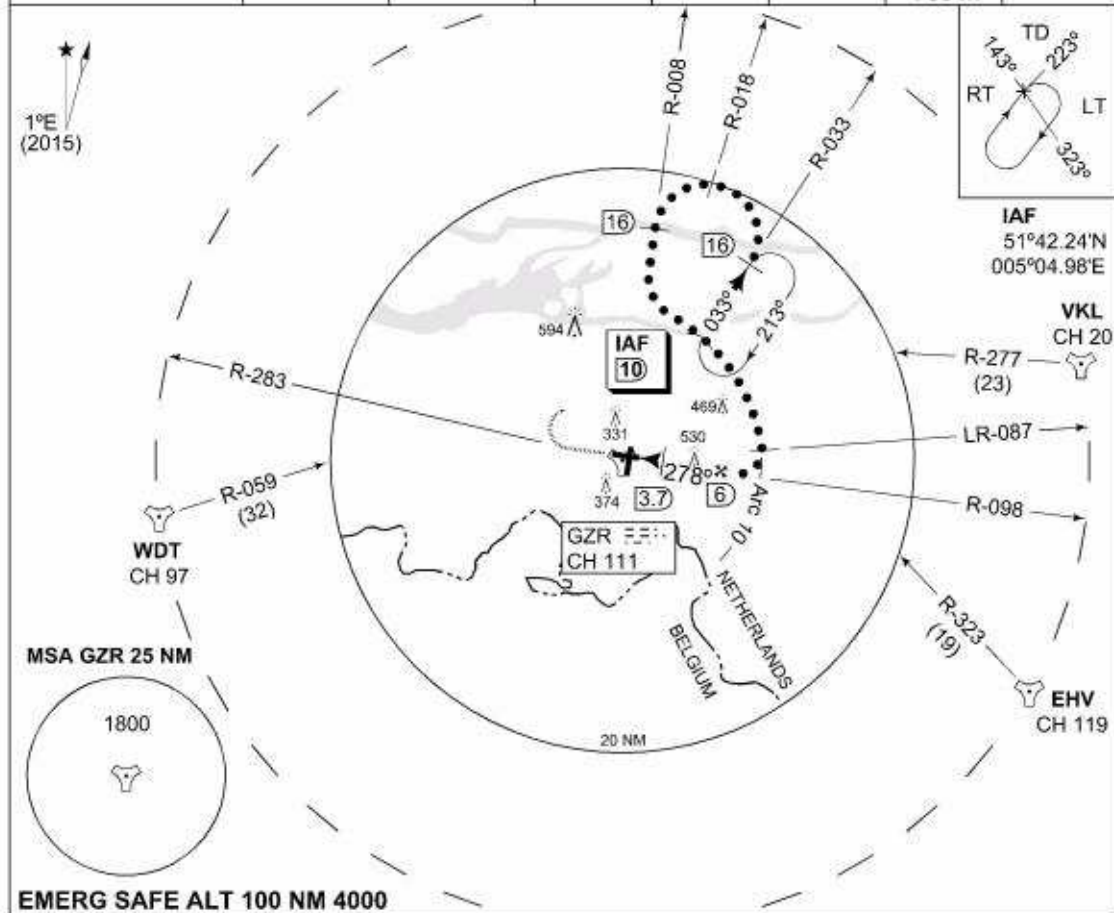
MIPS INSTRUMENT APPROACH CHART **ILS or LOC RWY 28 GILZE-RIJEN (EHGR)**



| CATEGORY | COPTER | A | B | C | D |
|--|----------------------------------|-----------------------------------|-----------------------------------|-----------------------------------|----------------------------------|
| ILS MINIMA ACCORDING TO PANS-OPS; NOT ACCORDING TO APATC-1 | | | | | |
| S-ILS 28 | 235 -400 200 (200-0.4) | 235 -800 200 (200-0.8) | | | 245 -800 210 (300-0.8) |
| S-LOC 28 | 380 -400 345 (400-0.4) | 380 -1200 345 (400-1.2) | | | |
| CIRCLING | 540 -1900 491 (500-1.9) | 670 -2800 621 (700-2.8) | 770 -3700 721 (800-3.7) | 910 -4600 861 (900-4.6) | |

MIPS INSTRUMENT APPROACH CHART **HI-TACAN RWY 28 GILZE-RIJEN (EHGR)**

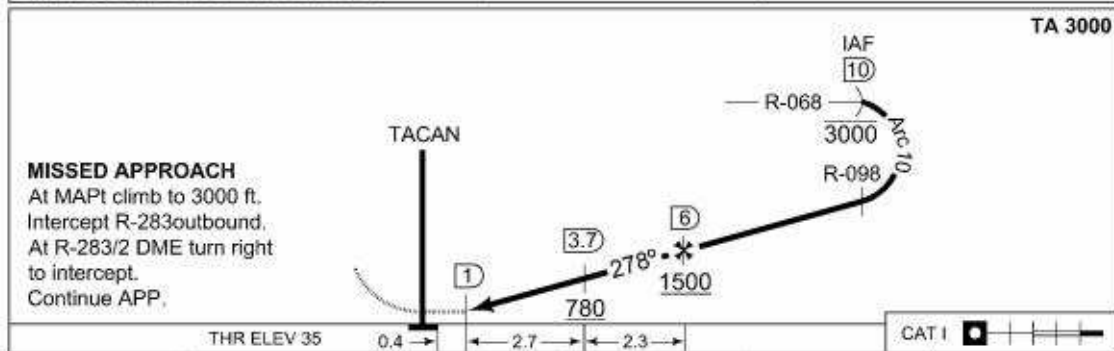
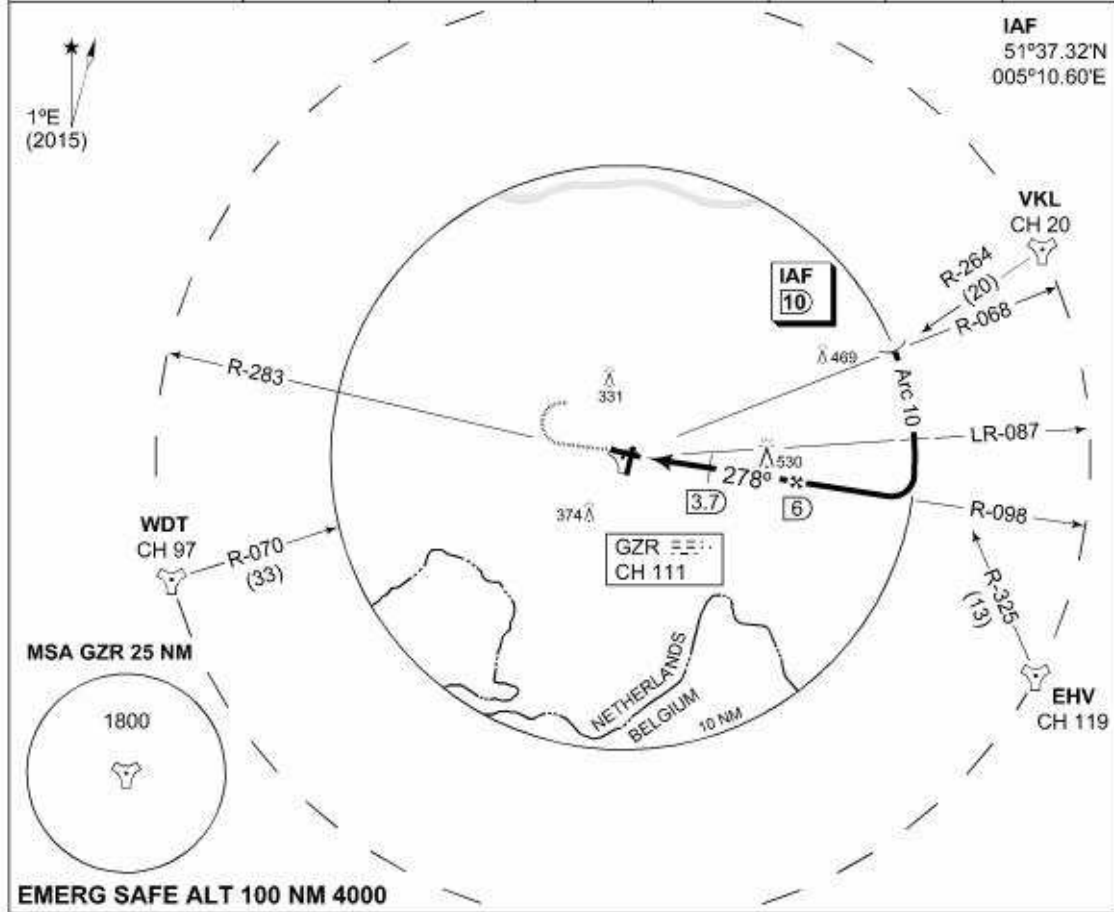
| | | | | | | | |
|------------------------------|--------------------|--------------------------------|------------|------------------------------------|----------------|----------------------------|----------------|
| DUTCH MIL 264.325 132.350 | | RAPCON WEST 281.475 123.580 | | GILZE-RIJEN TWR 369.500 125.330 | | GND CTL 234.925 121.680 | |
| TACAN GZR CH 111 | APP COURSE 278° | FAF ALT 1500 FT | Descent GR | MDA 400 | THR ELEV 35 | ALS 780 m | LDA 8806 FT |



| | | | | | | |
|------------|--------------------------------|--|---------|---------|--------------------------------|----------------------------------|
| | THR ELEV 35 | 0.4 → | ← 2.7 → | ← 2.3 → | | CAT I |
| CATEGORY | C | MINIMA ACCORDING TO PANS-OPS; NOT ACCORDING TO APATC-1 | | | D | E |
| S-TACAN 28 | 400 -800 365 (400-0.8) | | | | 400 -1200 365 (400-1.2) | |
| CIRCLING | 770 -3700 721 (800-3.7) | | | | 910 -4600 861 (900-4.6) | 1000 -6500 951 (1000-6.5) |

MIPS INSTRUMENT APPROACH CHART **TACAN RWY 28 GILZE-RIJEN (EHGR)**

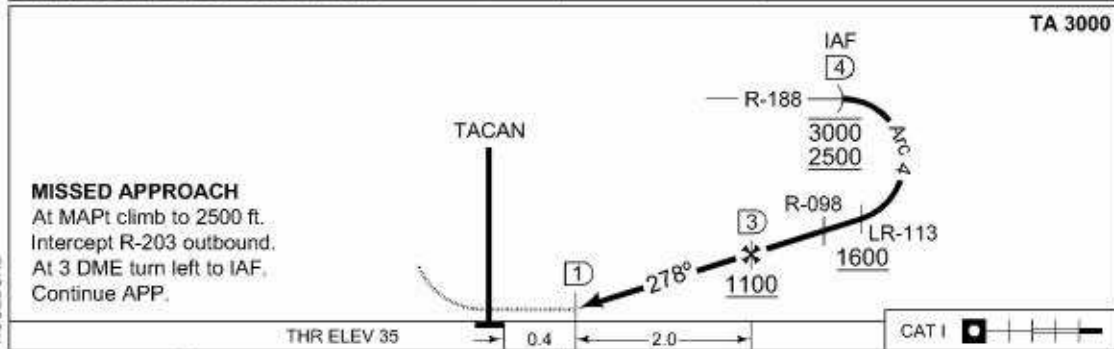
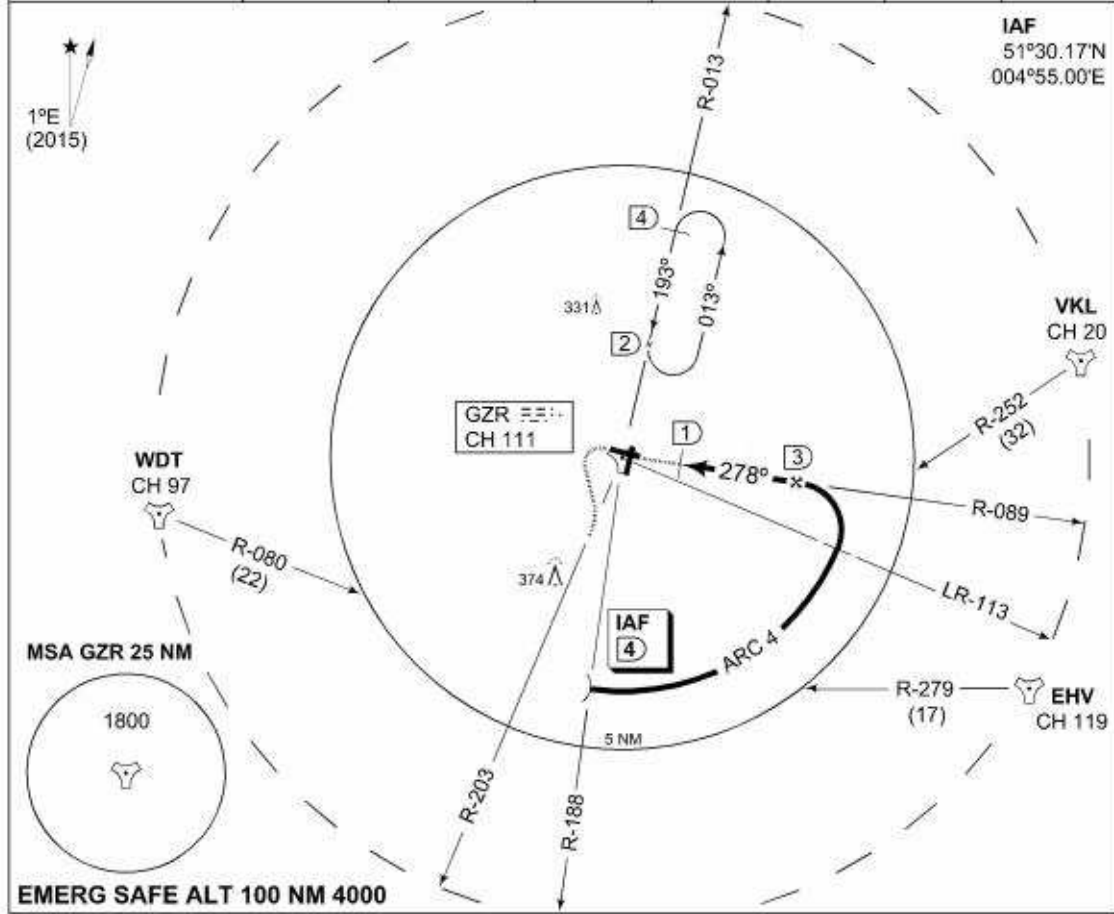
| | | | | | | | |
|------------------------------|--|--------------------------------|--------------------|------------------------------------|------------|----------------------------|--------------|
| DUTCH MIL 264.325 132.350 | | RAPCON WEST 281.475 123.580 | | GILZE-RIJEN TWR 369.500 125.330 | | GND CTL 234.925 121.680 | |
| TACAN GZR CH 111 | | APP COURSE 278° | FAF ALT 1500 FT | Descent GR | MDA 400 | THR ELEV 35 | ALS 780 m |
| | | | | | | LDA 8806 FT | |



| CATEGORY | MINIMA ACCORDING TO PANS-OPS; NOT ACCORDING TO APATC-1 | | | | |
|------------|--|-------------------------|-------------------------|-------------------------|---------------------------|
| | A | B | C | D | E |
| S-TACAN 28 | 400 -800 365 (400-0.8) | | | 400 -1200 365 (400-1.2) | |
| CIRCLING | 540 -1900 491 (500-1.9) | 670 -2800 621 (700-2.8) | 770 -3700 721 (800-3.7) | 910 -4600 861 (900-4.6) | 1000 -6500 951 (1000-6.5) |

MIPS INSTRUMENT APPROACH CHART **COPTER TACAN 278 GILZE-RIJEN (EHGR)**

| | | | | | | | |
|------------------------------|--------------------|--------------------------------|------------|------------------------------------|----------------|----------------------------|----------------|
| DUTCH MIL 264.325 132.350 | | RAPCON WEST 281.475 123.580 | | GILZE-RIJEN TWR 369.500 125.330 | | GND CTL 234.925 121.680 | |
| TACAN GZR CH 111 | APP COURSE 278° | FAF ALT 1100 FT | Descent GR | MDA 420 | THR ELEV 35 | ALS 780 m | LDA 8806 FT |



| | | | | | |
|-------------|-------------------------|-----|-----|-------|--|
| | THR ELEV 35 | 0.4 | 2.0 | CAT I | |
| CATEGORY | COPTER | | | | |
| S-TACAN 278 | 420 -400 385 (400-0.4) | | | | |
| CIRCLING | 540 -1900 491 (500-1.9) | | | | |

CHANGES: VAR, RENAME PROCEDURE

RNLAF 03 MAR 2016



INTENTIONALLY LEFT BLANK