

DE KOOY

EHKD AD 2.1 Aerodrome location indicator and name

EHKD - De Kooy

EHKD AD 2.2 Geographical and administrative data

1	ARP	52°55'25"N 004°46'50"E
2	Direction and distance from city	172° MAG/2.9 NM DEN HELDER
3	Elevation/Reference temperature	+ 4 ft AMSL/19.6° C (JUL)
4	MAG VAR/Annual change	0°04'E (MAY 2010)/-8'
5	AD operating authority Postal address Visitors' address Telephone Telephone outside OPR HR (OPS) Telefax (OPS) E-mail AFTN	RNLAF DHC Maritiem Vliegkamp De Kooy MPC 10A P.O. Box 8762 4820 BB Breda Rijksweg 20 1780 CA Den Helder +31(0)223 658636 / 658760 +31(0)223 658670 +31(0)223 658653 vva.ehkd@mindef.nl EHKDZPZX
6	Types of TFC permitted (IFR/VFR)	IFR/VFR
7	Remarks	For CIV use see AIP Netherlands

EHKD AD 2.3 Operational hours

1	AD OPR HR	MON/THU 0700/2130 (0600/2200), FRI 0700/1530 (0600/1430). Note: Between June 1st and July 20th the operational hours can (in consultation with dhc.mvkk@mindef.nl, tel 0223 658670) be extended (0600/2300) for a period of maximum 2 weeks.
2	Customs and immigration	HO
3	Health and sanitation	HO
4	AIS Briefing office	MON/FRI 0600/2000 (0500/1900)
5	ATS Reporting Office (ARO)	HO
6	MET Briefing Office	MON/THU 0500/2130 (0400/2300), FRI 0500/2100 (0400/2000). SAT, SUN and HOL 0500/1000 (0400/0900) and 1300/1900 (1200/1800).
7	ATS	HO
8	Fuelling	HO
9	Handling	HO
10	Security	HO
11	De-icing	Not AVBL
12	Remarks	1. AD CIV OPR HR MON/FRI 0600/2100 (0500/2000). SAT/SUN and legal HOL 0600/1000 (0500/0900) and 1300/1900 (1200/1800). 2. PPR see 2.23 para 2

EHKD AD 2.4 Handling services and facilities

1	Cargo-handling facilities	AVBL
2	Fuel/oil types	100LL, JET A-1, F-18, F-35, F-44 Oil, all regular types
3	Fuelling facilities/capacity	100LL, limited. JET A-1, F-18, F-35, F-44, no limitations
4	Oxygen	No
5	De-icing facilities/type	No
6	Starting units	DSA 150, ST 56
7	Hangar space for visiting ACFT	O/R
8	Repair facilities	O/R
9	Remarks	Nil

EHKD AD 2.5 Passenger facilities

1	Remain overnight	AVBL O/R and also in Den Helder and surroundings
2	Medical facilities	Medical officer, ambulance, hospital in Den Helder and Alkmaar
3	Remarks	Nil

EHKD AD 2.6 Rescue and fire fighting services

1	AD category for fire fighting	CAT 7
2	Remarks	Nil

EHKD AD 2.7 Seasonal availability - clearing

1	Type of clearing equipment	Snowplough and snowsweeper
2	Clearance priorities	SAR-spot, RWY and MIL/CIV apron
3	Remarks	Caution advised during snow and ice conditions

EHKD AD 2.8 Aprons, taxiways and check locations/positions data

1	Apron surface and strength	Tarmac/concrete, MIL Apron PCN 35 F/A/W/T
2	TWY width, surface and strength	TWY DELTA : Width 12 m PCN 33 F/A/W/T TWY DELTA 1: Width 12 m PCN 38 R/C/W/T TWY DELTA 2: Width 12 m PCN 47 F/A/W/T TWY DELTA 3: Width 12 m PCN 33 F/A/W/T TWY DELTA 4: Width 12 m PCN 47 F/A/W/T
3	Remarks	Nil

EHKD AD 2.9 Surface movement guidance and control system and markings

According to STANAG 3158		
1	Remarks	Nil

EHKD AD 2.10 Aerodrome obstacles

see Aerodrome Chart.		
----------------------	--	--

EHKD AD 2.11 Meteorological information provided

1	Associated MET Office	De Kooy
2	Hours of service MET Office outside hours	H24 N/A
3	Office responsible for TAF preparation Periods of validity	De Kooy 9 HRS
4	Type of landing forecast Interval of issuance	Colourstate trend AUTOMETAR, 1/2Hourly
5	Flight documentation Language(s) used	Charts, abbreviated plain language text English/Dutch
6	Charts and other information AVBL for briefing or consultation	SWC, prognostic upper air chart, radar satellite images, cross section and morning balloon
7	Supplementary equipment AVBL for providing information	Telefax, email, internet and MMHS
8	Remarks	De Kooy: Telephone: +31(0)223 658979/658784 Telefax: +31(0)223 658750

EHKD AD 2.12 Runway physical characteristics

1	RWY dimensions/a-gear	See Aerodrome Chart. Values in ft.
2	RWY surface	Tarmac/concrete
3	RWY strength	PCN 03: 62 F/A/W/T 21: 62 F/A/W/T

EHKD AD 2.13 Declared distances

See Aerodrome Chart. Values in ft.

EHKD AD 2.14 Approach and runway lighting

According to STANAG 3316		
1	Approach lighting	RWY 21: CAT I. 870 m RWY 03: S-ALS. 360 m
2	RWY lighting	VHI
3	PAPI	Situated on the left side of both RWYs
4	Remarks	Nil

EHKD AD 2.15 Other lighting, secondary power supply

1	LDI	Nil
2	TWY edge lighting	VB
3	Emergency RWY lighting	No
4	Emergency TWY edge lighting	No
5	Secondary power supply/switch-over	AVBL, switch over time 15 seconds
6	Remarks	Anemometer in front of TWR, lighted

EHKD AD 2.16 Helicopter landing area

1	Location	4 Helisquares situated on RWY 21/03, 1 Helisquare situated on TWY DELTA and 1 Helisquare situated on grass area (area 'ALFA') south-side of the airport east of beginning RWY 03. See Aerodrome Chart
2	Marking	Daylight marking
3	Lighting	Helipad 5, on TWY DELTA
4	Remarks	Nil

EHKD AD 2.17 Air traffic services airspace

1	Designation and lateral limits	DE KOOY CTR 52°59'13.58"N 004°55'32.06"E; along clockwise arc (radius 6.5 NM, centre 52°55'25.00"N 004°46'50.00"E) to 53°01'42.82"N 004°49'26.26"E; 53°02'11.88"N 004°49'38.31"E; along clockwise arc (radius 7 NM, centre 52°55'25.00"N 004°46'50.00"E) to 52°59'31.13"N 004°56'12.28"E; to point of origin.
2	Vertical limits	GND to 3000 ft AMSL
3	Airspace classification	D
4	ATS unit call sign Language(s)	Contact initially De Kooy TWR, outside HO Dutch Mil Info FREQ 132.350 MHz. English
5	Transition altitude	IFR: 3000 ft AMSL; VFR: 3500 ft AMSL
6	Remarks	Nil

EHKD AD 2.18 Air traffic services communication facilities

STATION/ SERVICE	CALL SIGN OR IDENTIFICATION	FREQUENCY MHz	HOURS	REMARKS
1	2	3	4	5
	As appropriate	121.500 243.000	HO	Emergency FREQ for all services
TWR	De Kooy Tower	120.130 ^{*)} 122.100 234.800 ^{*)} 257.800	HO	*) Primary FREQ Outside HO contact Dutch Mil Info 132.350 MHz or 264.325 MHz
GND CTL	De Kooy Ground De Kooy Tower	121.730 234.800	HO	
APP	RAPCON North	132.030 ^{*)} 337.000 ^{*)}	HO	
	De Kooy Arrival	124.230 ^{*)} 341.550 ^{*)}	HO	
	De Kooy Final	123.305 234.150	HO	SSR only

EHKD AD 2.19 Radio navigation and landing aids

FACILITY	ID	CHANNEL FREQ.	HOURS	CO-ORD.	RANGE/ ALTITUDE	REMARKS
1	2	3	4	5	6	7
VOR/DME	HDR	115.550 CH102Y	H24	52°54'24.68"N 004°45'56.60"E	120 NM/FL 250 90 NM/FL 250 BTN 015/150° MAG	210° MAG 0.9 DME from THR RWY 03
ILS LOCALIZER	DKY	108.900	H24	52°55'04.99"N 004°46'28.51"E		
GLIDE- PATH		329.300	H24	52°55'28.66"N 004°46'47.38"E		
DME	DKY	CH26X	H24	52°55'28.66"N 004°46'47.38"E		DME reading at THR RWY21: 0.2 NM

EHKD AD 2.20 Local traffic regulations

Glider- and Light ACFT flying

Intensive (student) HEL- and light ACFT flying. Light ACFT- and modelflying daily outside HO. Glidersite Wieringermeer located 8 NM SE of ARP (just outside CTR).

EHKD AD 2.21 Noise abatement procedures

ARR + DEP procedures are according standard VFR/IFR routes. Avoid overflying of Den Helder (2 NM NNW of ARP) and built-up areas as much as possible.

Avoid overflying camping southeast of FOXTROT below 1500 ft AMSL (see AIP Netherlands EHKA AD 2.21).

EHKD AD 2.22 Flight procedures

IFR procedures

The IAP and SID procedures are established in accordance with STANAG 3759 and AATCP-1.

VFR procedures

APPROACH PROCEDURES:

Contact De Kooy TWR 2 minutes before reaching the CTR BDRY, for permission to enter the CTR. Unless otherwise instructed, enter the CTR via designated reporting points at 1500 ft and maintain. Descent to circuit altitude according the joining procedure which will be instructed by ATC.

- a. Overhead joining. Report overhead, join downwind and descent to 1000 ft.
- b. Direct joining (ATC discretion only). After passing one of the following reporting points (Hotel, Bravo, Romeo or Foxtrot) join the circuit and descent to circuit altitude as instructed by ATC.

The following arrivals have been established.

- a. Whiskey arrival: proceed via Whiskey to Hotel.
- b. Oscar arrival: proceed via Oscar to Hotel.
- c. Echo arrival: proceed via Echo to Bravo.
- d. Zulu arrival: proceed via Zulu to Romeo.
ATC discretion only, when EHR 8 (partly) inactive.
- e. Foxtrot arrival: at CTR BDRY proceed to Foxtrot.
- f. Mike arrival: at CTR BDRY proceed via Mike to Hotel.

(see visual local map)

DEPARTURE PROCEDURES:

Unless otherwise instructed or approved climb after take-off to 1000 ft. The following departures have been established.

- a. Whiskey departure: proceed via Hotel to Whiskey.
- b. Oscar departure: proceed via Hotel to Oscar.
- c. Echo departure: proceed via Bravo to Echo.
- d. Zulu departure: proceed via Romeo to Zulu.

ATC discretion only, when EHR 8 (partly) inactive:

- e. Foxtrot departure: proceed via Foxtrot to CTR BDRY.
- f. Mike departure: proceed via Hotel and Mike to CTR BDRY.
Leave the CTR via the designated reporting points.

REPORTING POINTS in degrees, minutes and seconds:

The following reporting points have been established (see local map):

- Hotel: 200 m north-east of the Drydock
(HDR R-029 3.8 DME / 52°57'52"N 004°48'12"E).
- Bravo: Intersection Zandvaart/Balgzandkanaal
(HDR R-102 2.4 DME / 52°54'08"N 004°49'58"E).
- Echo: South-east bank of Amstelmeer
(HDR R-112 6.7 DME / 52°52'19"N 004°56'08"E).
- Romeo: Intersection N9 - Callantsoogervaart
(HDR R-177 1.8 DME / 52°52'36"N 004°46'06"E).
- Zulu: Bridge de Stolpen - N9 - Noordhollandskanaal
(HDR R-192 5.7 DME / 52°48'52"N 004°44'25"E).
- Foxtrot: Intersection Middenvliet/Zanddijk
(HDR R-291 1.9 DME / 52°55'02"N 004°43'15"E).
- Whiskey: Car park near beach Jan Ayeslag
(HDR R-347 7.9 DME / 53°02'21"N 004°42'58"E).
- Oscar: Fort de Schans
(HDR R-018 7.7 DME / 53°01'56"N 004°49'36"E).
- Mike: North-east corner of sandbank Noorderhaaks
(HDR R-300 5.2 DME / 52°58'50"N 004°41'37"E).

CIRCUIT PROCEDURES:

Circuit ALT 1000 ft. RWY 21 L/H circuit RWY 03 R/H circuit. Landing direction 270°, 090°, 350° and 170° may be used for HEL flying, circuit direction as instructed by ATC.

EHKD AD 2.23 Additional information

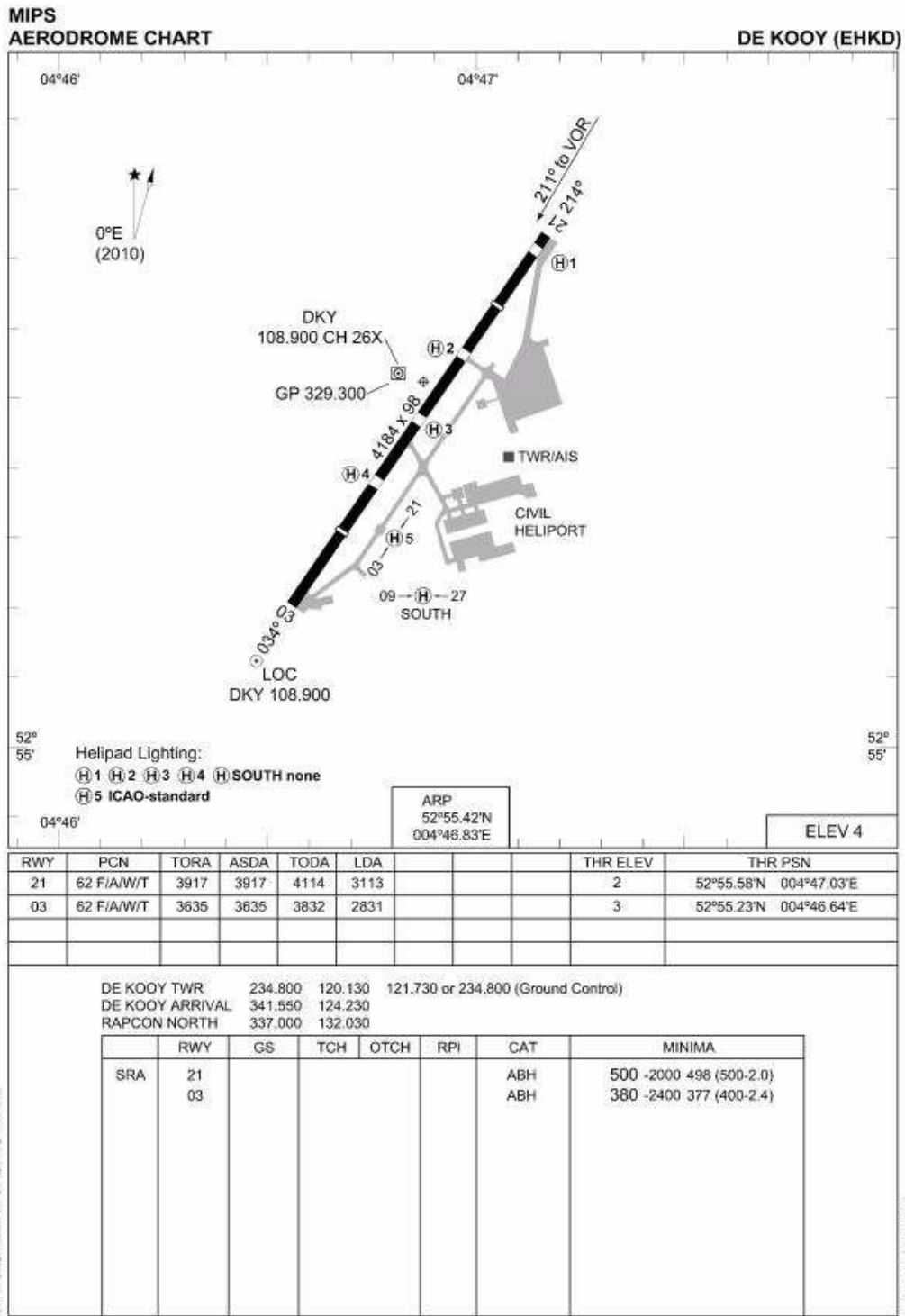
1. EHR 8 (prohibited/gunfiring) extending in the CTR. The eastboundary is east of the dunes.
2. PPR: for Prior Permission Request contact:
De Kooy Flight Information Office via e-mail: vva.ehkd@mindef.nl

Requests must contain the following information.

- a. Inbound De Kooy for practice approaches only or full stop landing.
- b. Name and phonenumber concerning person of contact.
- c. Call sign and/or ACFT registration.
- d. Type of ACFT.
- e. DOF (Date Of Flight).
- f. Aerodrome of departure.
- g. ETA (Estimated Time of Arrival) at De Kooy.
- h. ETD (Estimated Time of Departure) from De Kooy.
- i. Aerodrome of arrival.
- j. Name of aircraft operator. Incomplete requests will NOT be considered.
A standard request form may be obtained from ATC De Kooy through previously mentioned e-mail address.
3. When intending a full stop landing at de Kooy please also include if refuel, hangar space, accommodation or other is required.
4. AIS Briefing office facility and the ATS Reporting Office (ARO) is only available through the Flight Data and Notam Office (FDNO) located at AOCS Nieuw Milligen.
Tel: +31(0)577 458336/8781
Fax: +31(0)577 456523
E-mail: aocs.fdno@mindef.nl
AFTN: EHMCZPZX
avlbl H24

EHKD AD 2.24 Charts related to an aerodrome

Aerodrome Chart	EHKD AD 2-9
Local map	EHKD AD 2-10
Instrument approach chart VOR RWY 03	EHKD AD 2-11
Instrument approach chart COPTER VOR RWY 03	EHKD AD 2-12
Instrument approach chart ILS or LOC RWY 21	EHKD AD 2-13
Instrument approach chart VOR RWY 21	EHKD AD 2-14



LOCAL MAP



