

## LEEWARDEN

### EHLW AD 2.1 Aerodrome location indicator and name

EHLW Leeuwarden

### EHLW AD 2.2 Geographical and administrative data

1	ARP	53°13'30.98"N 005°45'09.12"E
2	Direction and distance from city	325° MAG/2 NM LEEWARDEN
3	Elevation/Reference temperature	+ 3 ft AMSL/20.5° C (AUG)
4	MAG VAR/Annual change	0°60'E (JAN 2015)/10'E
5	AD operating authority Postal address  Visitors' address  Telephone Telefax AFTN	RNLAF Vliegbasis Leeuwarden MPC 80A P.O. Box 8762 4820 BB Breda Keegsdijkje 7 8919 AK Leeuwarden +31(0)58 2346911 +31(0)58 2346982 EHLWZTZX
6	Types of TFC permitted (IFR/VFR)	IFR/VFR
7	Remarks	Nil

### EHLW AD 2.3 Operational hours

1	AD OPR HR	MON/FRI 0700/1545 (0600/1445)
2	Customs and immigration	45 MIN PN
3	Health and sanitation	HO
4	AIS Briefing office	See 2.23
5	ATS Reporting Office (ARO)	See 2.23
6	MET Briefing Office	HO
7	ATS	HO
8	Fuelling	HO
9	Handling	HO
10	Security	HO
11	De-icing	HO
12	Remarks	PPR 24 HRS See 2.23

### EHLW AD 2.4 Handling services and facilities

1	Cargo-handling facilities	Yes
2	Fuel/oil types	F-34, H-515, O-133, O-142, O-147, O-148, O-149, O-153, O-155, O-156, O-157, O-158, O-190, O-192
3	Fuelling facilities/capacity	No limitations
4	Oxygen	LHOX, LOX
5	De-icing facilities/type	S-738, S-742
6	Starting units	DSA 150, DSA 600, FC 15, FC 30, JAS, EC 3500
7	Hangar space for visiting ACFT	No
8	Repair facilities	F16
9	Remarks	Nil

### EHLW AD 2.5 Passenger facilities

1	Remain overnight	AVBL O/R
2	Medical facilities	Medical officer, ambulance
3	Remarks	Nil

### EHLW AD 2.6 Rescue and fire fighting services

1	AD category for fire fighting	NATO CAT 7
2	Remarks	Nil

### EHLW AD 2.7 Seasonal availability - clearing

1	Seasonal availability	All seasons
2	Snow removal equipment	Yes
3	Remarks	Caution advised in winter during ice conditions

### EHLW AD 2.8 Aprons, taxiways and check locations/positions data

1	Apron surface and strength	Concrete, Three areas along southern TWY. PCN: South 1 44 R/C/W/T South 2 44 R/C/W/T South 3 30 R/C/W/T One area along northern TWY. PCN: North 39 R/C/W/T
2	TWY width, surface and strength	Width 49 ft tarmac/concrete, PCN: North 69 F/B/W/T East 75 F/B/W/T South 75 F/B/W/T West 65 F/B/W/T
3	Remarks	Nil

### EHLW AD 2.9 Surface movement guidance and control system and markings

According STANAG 3158		
1	Remarks	Nil

### EHLW AD 2.10 Aerodrome obstacles

See Aerodrome Chart		
---------------------	--	--

### EHLW AD 2.11 Meteorological information provided

1	Associated MET Office	Leeuwarden
2	Hours of service MET Office outside hours	HO Joint MET Group
3	Office responsible for TAF preparation Periods of validity	Leeuwarden 9 HRS
4	Type of landing forecast Interval of issuance	Colourstate trend Hourly
5	Flight documentation Language(s) used	Charts, abbreviated plain language text English/Dutch
6	Charts and other information AVBL for briefing or consultation	SWC, prognostic upper air chart, radar satellite images
7	Supplementary equipment AVBL for providing information	Telefax
8	Remarks	Tel. Leeuwarden: +31(0)58 2346056 Tel. Joint MET Group: +31(0)164 693111

### EHLW AD 2.12 Runway physical characteristics

1	RWY dimensions/a-gear	See Aerodrome Chart. Values in ft.
2	RWY surface	Tarmac/concrete
3	RWY strength	PCN: 23 75 F/B/W/T 05 75 F/B/W/T 27 52 F/B/W/T 09 52 F/B/W/T
4	Remarks	RWY 09/27 no Touchdown Zone Marking and Aiming Point Marking available.

### EHLW AD 2.13 Declared distances

See Aerodrome Chart. Values in ft.
------------------------------------

### EHLW AD 2.14 Approach and runway lighting

According to STANAG 3316		
1	Approach lighting	RWY 23: CAT I. 720 m RWY 05: CAT I. 660 m RWY 27: Nil RWY 09: Nil
2	RWY lighting	RWY 05/23 VHI/VCL, RWY 09/27 VHI
3	PAPI	Situated on the left side of RWY 23
4	Remarks	Nil

### EHLW AD 2.15 Other lighting, secondary power supply

1	LDI	Lighted
2	TWY edge lighting	VB
3	Emergency RWY lighting	Moskit type 2 (according STANAG 3534)
4	Emergency TWY edge lighting	Retroreflective markers
5	Secondary power supply/switch-over	AVBL, switch over time 15 seconds
6	Remarks	Nil

### EHLW AD 2.16 Helicopter landing area

1	Location	200 m north of TWR. See Aerodrome Chart.
2	Marking	Daylight marking
3	Lighting	No

### EHLW AD 2.17 Air traffic services airspace

1	Designation and lateral limits	Leeuwarden control zone 53°20'10.90"N 005°52'29.80"E; 53°21'38.51"N 005°56'03.02"E; 53°16'41.94"N 006°01'42.19"E; 53°15'14.48"N 005°58'09.16"E; along clockwise arc (radius 8 NM, centre 53°13'30.98"N 005°45'09.12"E) to 53°06'50.46"N 005°37'51.08"E; 53°05'22.29"N 005°34'19.67"E; 53°10'17.48"N 005°28'38.65"E; 53°11'45.80"N 005°32'10.23"E; along clockwise arc (radius 8 NM, centre 53°13'30.98"N 005°45'09.12"E) to point of origin.
2	Vertical limits	GND to 3000 ft AMSL
3	Airspace classification	D
4	ATS unit call sign Language(s)	Contact initially Leeuwarden TWR, outside HO Dutch Mil Info FREQ 132.350 MHz. English
5	Transition altitude	IFR: 3000 ft AMSL; VFR: 3500 ft AMSL
6	Remarks	Nil

### EHLW AD 2.18 Air traffic services communication facilities

STATION/ SERVICE	CALL SIGN OR IDENTIFICATION	FREQUENCY MHz	HOURS	REMARKS
1	2	3	4	5
	As appropriate	121.500 243.000	HO	Emergency FREQ for all services
TWR	Leeuwarden Tower	120.705 <sup>*)</sup> 122.100 247.675 <sup>*)</sup> 257.800	HO	*) Primary FREQ Outside HO contact Dutch Mil Info 132.350 MHz
GND CTL	Leeuwarden Ground	281.550	HO	
APP	RAPCON North	132.030 <sup>*)</sup> 337.000 <sup>*)</sup>	HO	Radar equipped
RADAR	Leeuwarden Arrival	132.030 279.525	HO	Through APP

## EHLW AD 2.19 Radio navigation and landing aids

FACILITY	ID	CHANNEL FREQ.	HOURS	CO-ORD.	RANGE/ ALTITUDE	REMARKS
1	2	3	4	5	6	7
TACAN	LWD	CH 94X	H24	53°13'25.08"N 005°45'06.64"E	150 NM/60000 ft	FREQ pro- tected
ILS 05 LOCALIZER	LWZ	111.750	HO	53°13'59.14"N 005°46'17.18"E		
GLIDEPATH		333.350	HO	53°13'17.66"N 005°44'27.50"E		
DME 05		CH 54Y	HO	53°13'17.66"N 005°44'27.50"E		
ILS 23 LOCALIZER	LWO	111.750	HO	53°13'04.37"N 005°44'04.89"E		
GLIDEPATH		333.350	HO	53°13'50.75"N 005°45'46.46"E		
DME 23		CH 54Y	HO	53°13'50.75"N 005°45'46.46"E		
ILS 09 LOCALIZER	WOL	109.750	HO	53°13'42.54"N 005°46'20.19"E		
GLIDEPATH		333.050	HO	53°13'39.59"N 005°44'43.45"E		
DME 09		CH 34Y	HO	53°13'39.59"N 005°44'43.45"E		
ILS 27 LOCALIZER	LOB	109.750	HO	53°13'42.90"N 005°44'16.77"E		
GLIDEPATH		333.050	HO	53°13'39.38"N 005°45'54.62"E		
DME 27		CH 34Y	HO	53°13'39.38"N 005°45'54.62"E		

## EHLW AD 2.20 Local traffic regulations

### Glider- and Light ACFT flying

Gliderflying outside OPR HR SR/SS.

## EHLW AD 2.21 Noise abatement procedures

### Special rules for visiting jet ACFT:

a. APPROACHING:

- normal circuit procedures, except R/H circuits for RWY 23 and 27;
- jet ACFT full-stop landings only;
- practice diversions may only be executed by ACFT on IF-training missions.

**b. DEPARTING:**

- after take off climb ASAP to at least 1000 ft AGL;
- (if possible) use of afterburner to be terminated before reaching Marssum (end of RWY 23) or Jelsum (end of RWY 05);
- low level departures: after take off straight ahead to at least 1500 ft AGL before turning on course;
- high level departures: only SIDs are allowed;
- afterburner climbouts are not permitted.

**EHLW AD 2.22 Flight procedures****IFR procedures**

The IAP and SID procedures are established in accordance with STANAG 3759 AND AATCP-1.

**VFR procedures**

CONVENTIONAL ACFT:

Join R/H - or L/H baseleg for RWY in use as directed by ATC.

DART/TOW ACFT:

Return from EHD 42 via point Oscar, LWD R-340 22 NM at 5000 ft, point Charlie, LWD R-340 12 NM at 1200 ft. Via initial RWY 23 dart/tow ACFT will descend to 600 ft dropping tow on main grass area south of RWY 05/23.

LIGHT ACFT/HEL:

Join circuit from the south at 600 ft. This altitude is to be reached at a distance of at least 5 NM from the AD. Departure from the AD to be carried out in a southern direction at 600 ft. In both the landing pattern and after take off RWYs 05/23 and 09/27 are not to be crossed.

**EHLW AD 2.23 Additional information**

AIS Briefing office facility and the ATS Reporting Office (ARO) is only available through the Flight Data and Notam Office (FDNO) located at AOCs Nieuw Milligen.

Tel: +31(0)577 458336/8781

Fax: +31(0)577 456523

E-mail: aocs.fdns@mindef.nl

AFTN: EHMCZPZX  
avbl H24

PPR 24 HRS: for Prior Permission Request contact:

Leeuwarden AB  
Operational Centre

Tel: +31(0)58 2346004/6006

Fax: +31(0)58 2346923

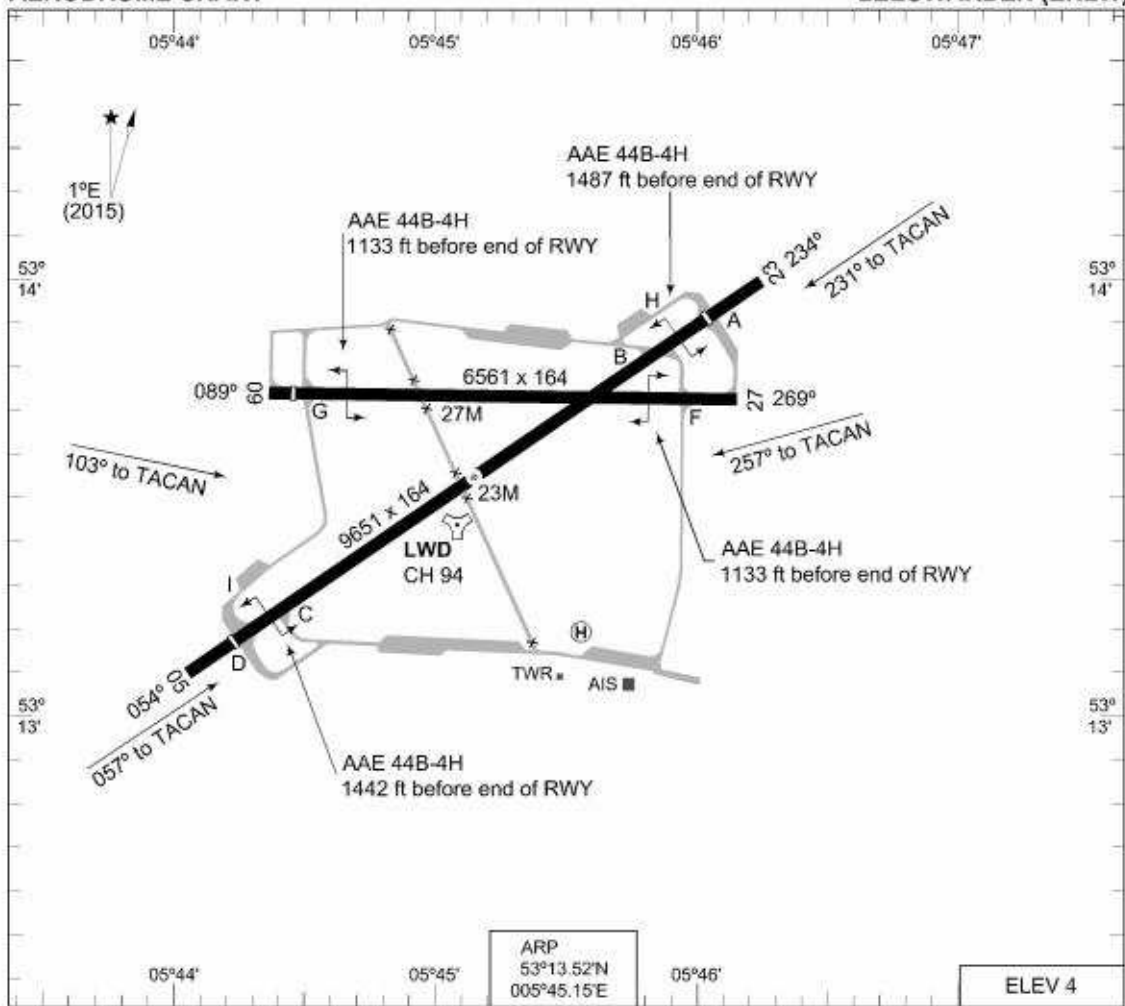
E-mail: LWOperatiecentrumOps.LW.CLSK@mindef.nl

## EHLW AD 2.24 Charts related to an aerodrome

Aerodrome Chart	EHLW AD 2-9
Local map	EHLW AD 2-10
Instrument departure chart LW1	EHLW AD 2-11
Instrument departure chart LW3	EHLW AD 2-12
Instrument departure chart LW5	EHLW AD 2-13
Instrument departure chart LW7	EHLW AD 2-14
Instrument approach chart ILS or LOC RWY 05	EHLW AD 2-15
Instrument approach chart HI-TACAN RWY 05	EHLW AD 2-16
Instrument approach chart TACAN RWY 05	EHLW AD 2-17
Instrument approach chart COPTER ILS/DME or LOC 054	EHLW AD 2-18
Instrument approach chart COPTER TACAN 057	EHLW AD 2-19
Instrument approach chart ILS or LOC RWY 09	EHLW AD 2-20
Instrument approach chart HI-TACAN RWY 09	EHLW AD 2-21
Instrument approach chart TACAN RWY 09	EHLW AD 2-22
Instrument approach chart ILS or LOC RWY 23	EHLW AD 2-23
Instrument approach chart HI-TACAN RWY 23	EHLW AD 2-24
Instrument approach chart TACAN RWY 23	EHLW AD 2-25
Instrument approach chart COPTER ILS/DME or LOC 234	EHLW AD 2-26
Instrument approach chart COPTER TACAN 231	EHLW AD 2-27
Instrument approach chart ILS or LOC RWY 27	EHLW AD 2-28
Instrument approach chart HI-TACAN RWY 27	EHLW AD 2-29
Instrument approach chart TACAN RWY 27	EHLW AD 2-30



MIPS AERODROME CHART LEEUWARDEN (EHLW)



ARP  
53°13.52'N  
005°45.15'E

ELEV 4

RWY	PCN	TORA	ASDA	TODA	LDA	PAPI	THR ELEV	THR PSN
23	75 F/B/W/T	9651	9651	9651	8652	3.0°	4	53°13.88'N 005°46.04'E
05	75 F/B/W/T	9651	9651	9651	8858		4	53°13.15'N 005°44.27'E
27	52 F/B/W/T	6561	6561	6561	6561		3	53°13.71'N 005°46.18'E
09	52 F/B/W/T	6561	6561	6561	6368		3	53°13.71'N 005°44.44'E

LEEUWARDEN TWR 247.675 120.705 (Ground Control) 281.550  
LEEUWARDEN ARRIVAL 279.525 RAPCON NORTH 337.000 132.030

SRA	RWY	GS	TCH	OTCH	RPI	CAT	MINIMA
23						AB	450 -1100 446 (500-1.1/1.9)
						C	450 -1200 446 (500-1.2/2.0)
						D	450 -1600 446 (500-1.6/2.4)
						E	450 -2000 446 (500-2.0/2.8)
							450 -2000 446 (500-2.0/2.8)
05						AB	470 -1100 466 (500-1.1/1.9)
						C	470 -1200 466 (500-1.2/2.0)
						D	470 -1600 466 (500-1.6/2.4)
						E	470 -2000 466 (500-2.0/2.8)
							470 -2000 466 (500-2.0/2.8)
27						AB	420 -1900 417 (500-1.9/1.9)
						CD	420 -2000 417 (500-2.0/2.0)
						E	420 -2400 417 (500-2.4/2.4)
							420 -2400 417 (500-2.4/2.4)
							420 -2400 417 (500-2.4/2.4)
09						AB	460 -1900 458 (500-1.9/1.9)
						C	460 -2000 458 (500-2.0/2.0)
						DE	460 -2400 458 (500-2.4/2.4)
							460 -2400 458 (500-2.4/2.4)

CHANGES: VAR

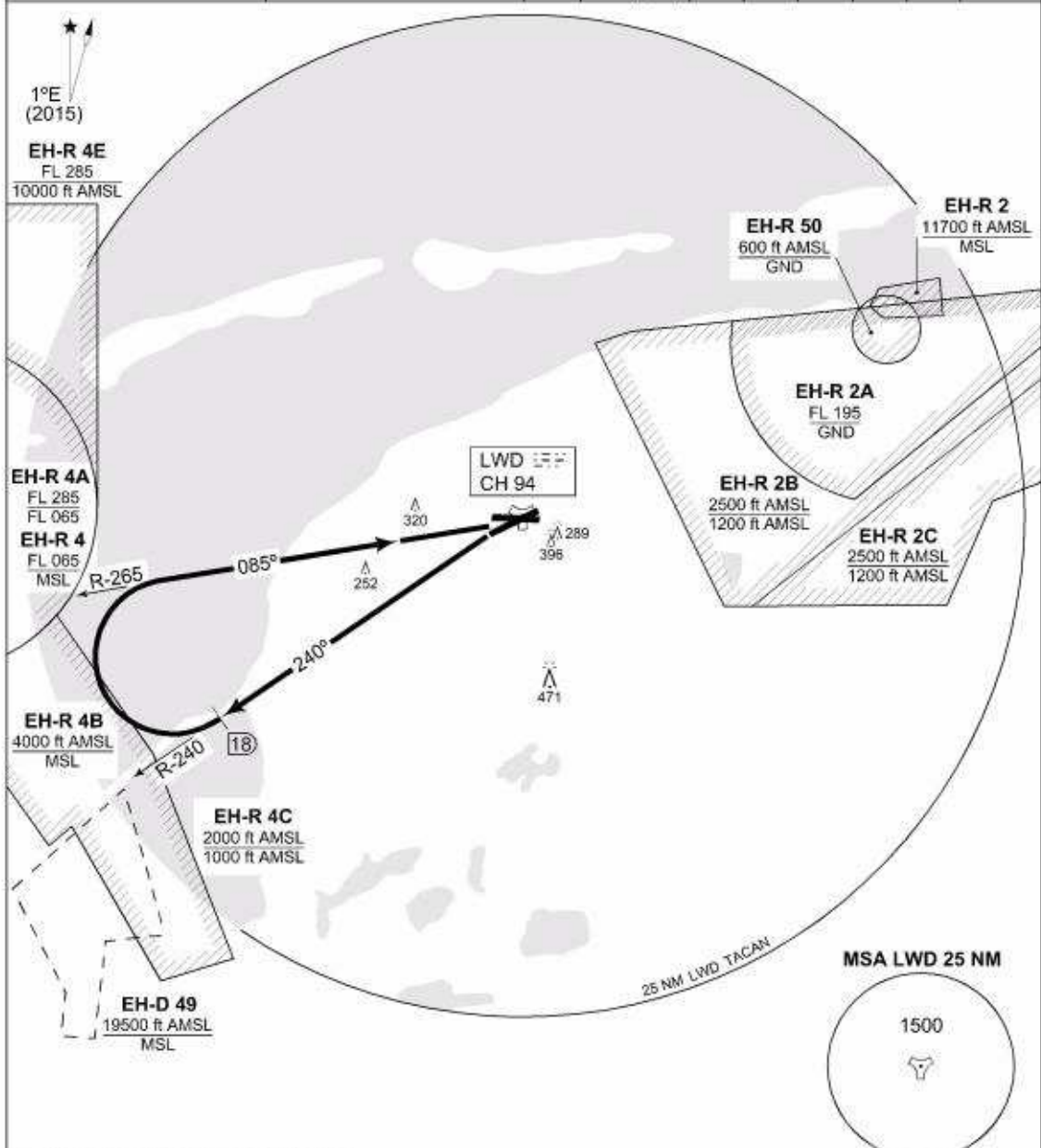
RNLAF 03 MAR 2016

### LOCAL MAP



**TERPS INSTRUMENT DEPARTURE CHART** **LW1 LEEUWARDEN (EHLW)**

GND CTL 281.550	LEEUWARDEN TWR 247.675 120.705	AD ELEV 4		RAPCON NORTH 337.000 132.030		DUTCH MIL 264.325 132.350			
		RWY	Knots	120	180	240	300	360	to
		23	V/V (fpm)	600	900	1200	1500	1800	1000 ft



**EMERG SAFE ALT 100 NM 2300** **TA 3000**

**LEEUWARDEN 1 (RWY 23)** - Climb on R-240 outbound Leeuwarden TACAN.  
 - At 18 DME turn right to intercept R-265 inbound and proceed to Leeuwarden TACAN.

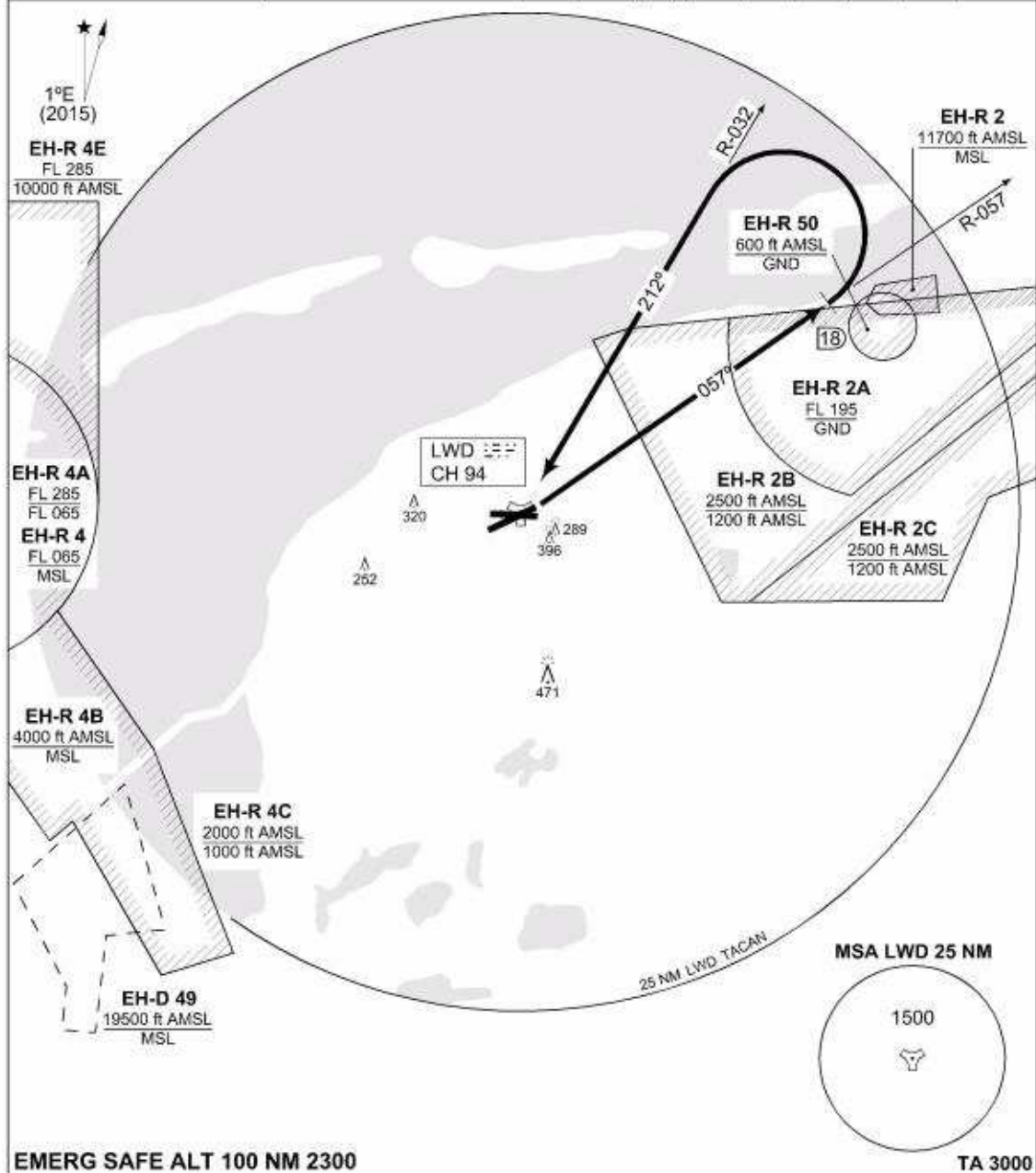
**NOTE:** Procedure may be changed by ATC when BREEZANDDIJK firing range is active.

CHANGES: VAR

RNLAF 03 MAR 2016

**TERPS INSTRUMENT DEPARTURE CHART** **LW3 LEEUWARDEN (EHLW)**

GND CTL 281.550	LEEUWARDEN TWR 247.675 120.705	RAPCON NORTH 337.000 132.030		DUTCH MIL 264.325 132.350					
		RWY	Knots	120	180	240	300	360	to
		05	V/V (fpm)	540	810	1080	1350	1620	1000 ft



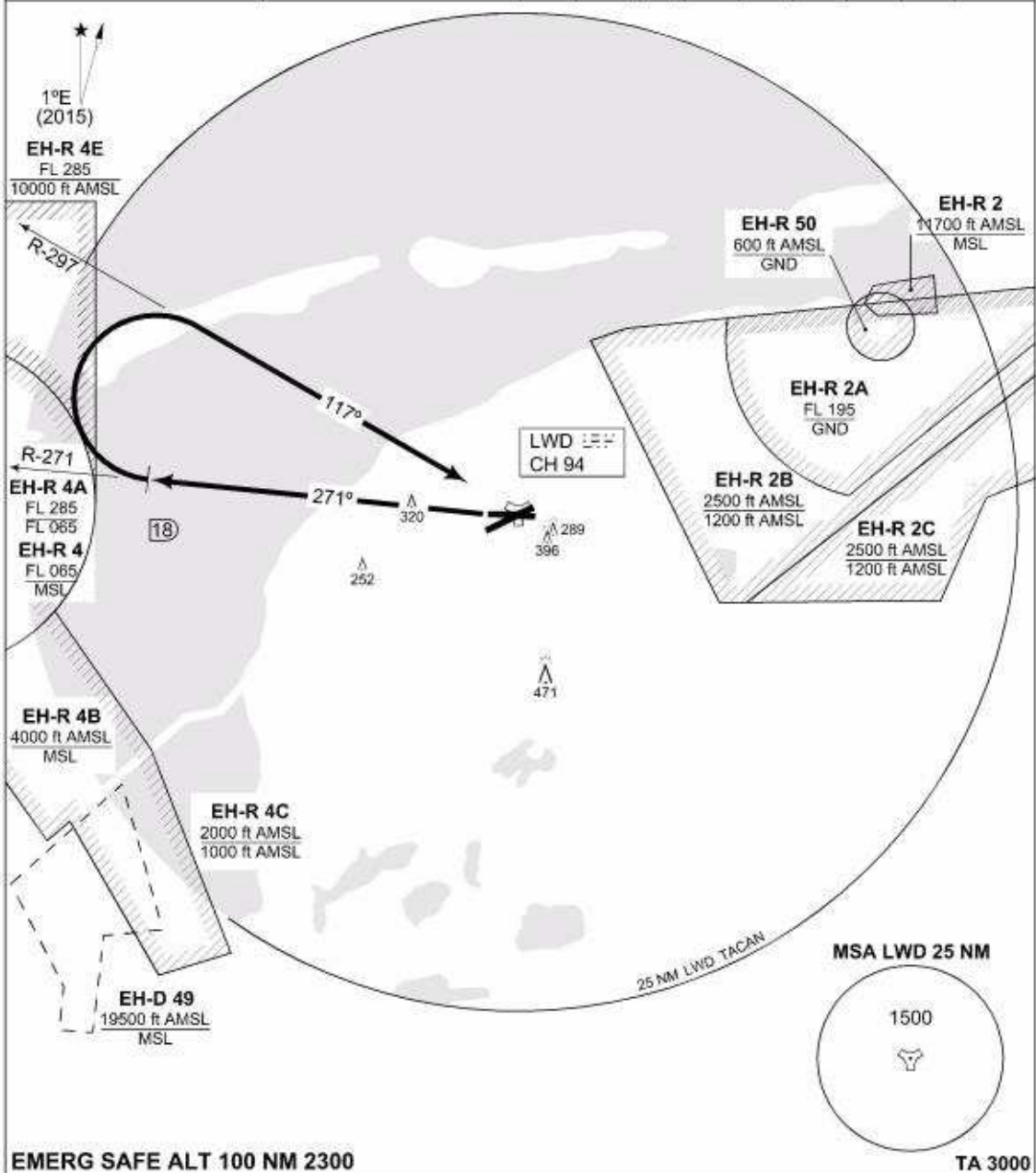
**EMERG SAFE ALT 100 NM 2300** **TA 3000**

<p>CHANGES: VAR</p> <p><b>LEEUWARDEN 3 (RWY 05)</b></p>	<ul style="list-style-type: none"> <li>- Climb on R-057 outbound Leeuwarden TACAN.</li> <li>- At 18 DME turn left to intercept R-032 inbound and proceed to Leeuwarden TACAN.</li> </ul>
---	--

RNLAF 03 MAR 2015

**TERPS INSTRUMENT DEPARTURE CHART** **LW5 LEEUWARDEN (EHLW)**

GND CTL 281.550	LEEWARDEN TWR 247.675 120.705	RAPCON NORTH 337.000 132.030		DUTCH MIL 264.325 132.350					
		RWY 27	Knots V/V (fpm)	120 550	180 825	240 1100	300 1375	360 1700	to 1000 ft



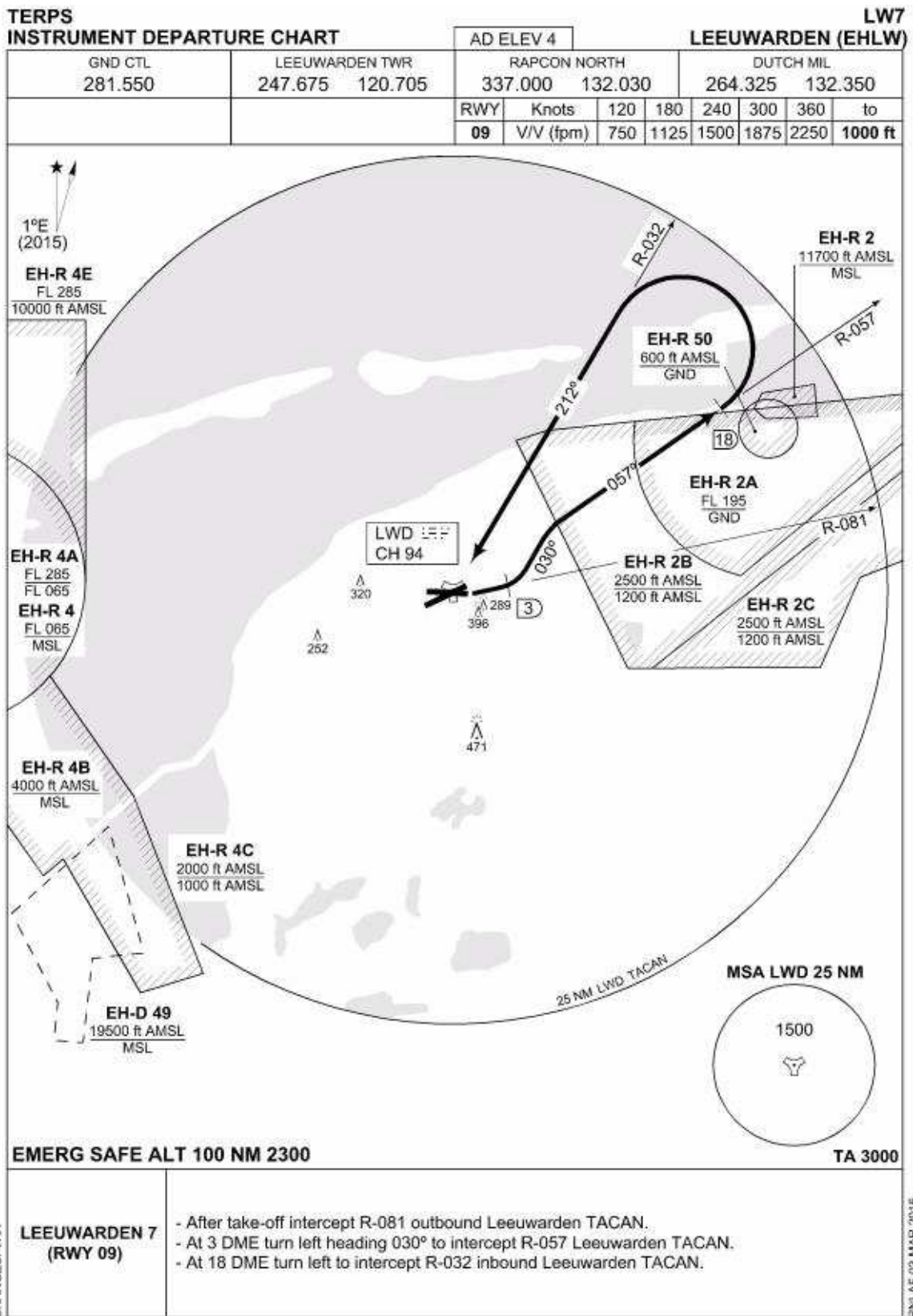
**EMERG SAFE ALT 100 NM 2300** **TA 3000**

CHANGES: VAR

**LEEWARDEN 5 (RWY 27)**

- After take-off RWY 27 intercept R-271 outbound Leeuwarden TACAN.
- At 18 DME turn right to intercept R-297 inbound Leeuwarden TACAN.

EN/LAF 03 MAR 2016



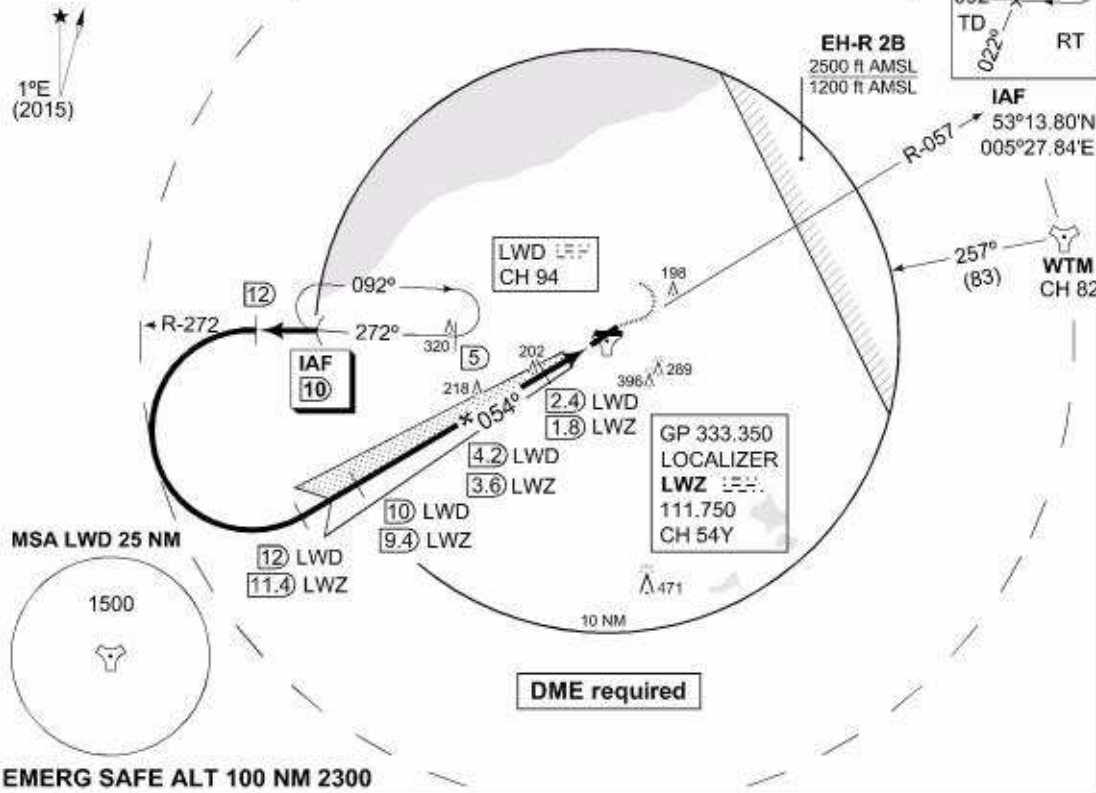
**MIPS INSTRUMENT APPROACH CHART** AD ELEV 4 **ILS or LOC RWY 05 LEEUWARDEN (EHLW)**

DUTCH MIL 264.325 132.350	RAPCON NORTH 337.000 132.030	LEEUWARDEN TWR 247.675 120.705	GND CTL 281.550
------------------------------	---------------------------------	-----------------------------------	--------------------

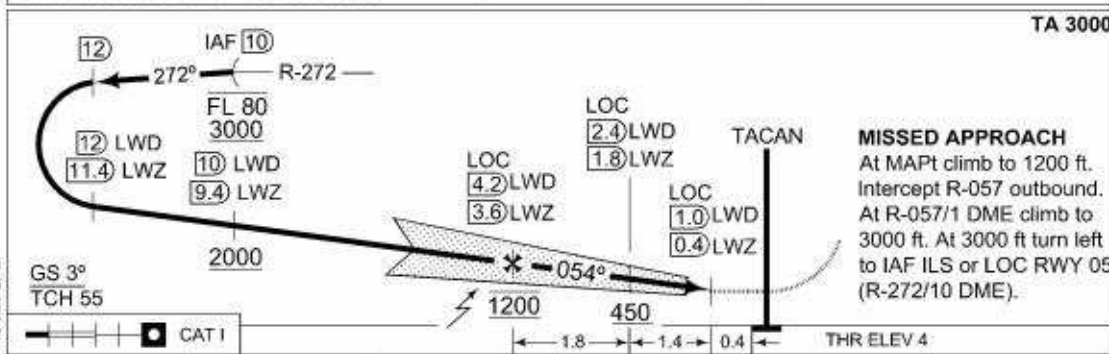
LOCALIZER / DME LWZ 111.750 / CH 54Y	APP COURSE 054°	GS INTCEPT ALT 1200 FT	GS 3°	DA <b>SEE CAT</b>	THR ELEV 4	ALS 660 m	LDA 8858 FT
---	--------------------	---------------------------	----------	----------------------	---------------	--------------	----------------

**NOTE:**

- ① CIRCLING NOT AUTHORIZED SOUTH OF RWY 05-23



**EMERG SAFE ALT 100 NM 2300**



CATEGORY	MINIMA ACCORDING TO PANS-OPS; NOT ACCORDING TO APATC-1				
	A	B	C	D	E
S-ILS 05	204 -800 200 (200-0.8/1.6)	208 -800 204 (300-0.8/1.6)	218 -800 214 (300-0.8/1.6)	227 -800 223 (300-0.8/1.6)	246 -800 242 (300-0.8/1.6)
S-LOC 05	350 -800 346 (400-0.8/1.6)				
CIRCLING ①	500 -1900 496 (500-1.9)	510 -2800 506 (600-2.8)	610 -3700 606 (700-3.7)	720 -4600 716 (800-4.6)	820 -6500 816 (900-6.5)

CHANGES: VAR, RENAME PROCEDURE

MIPS

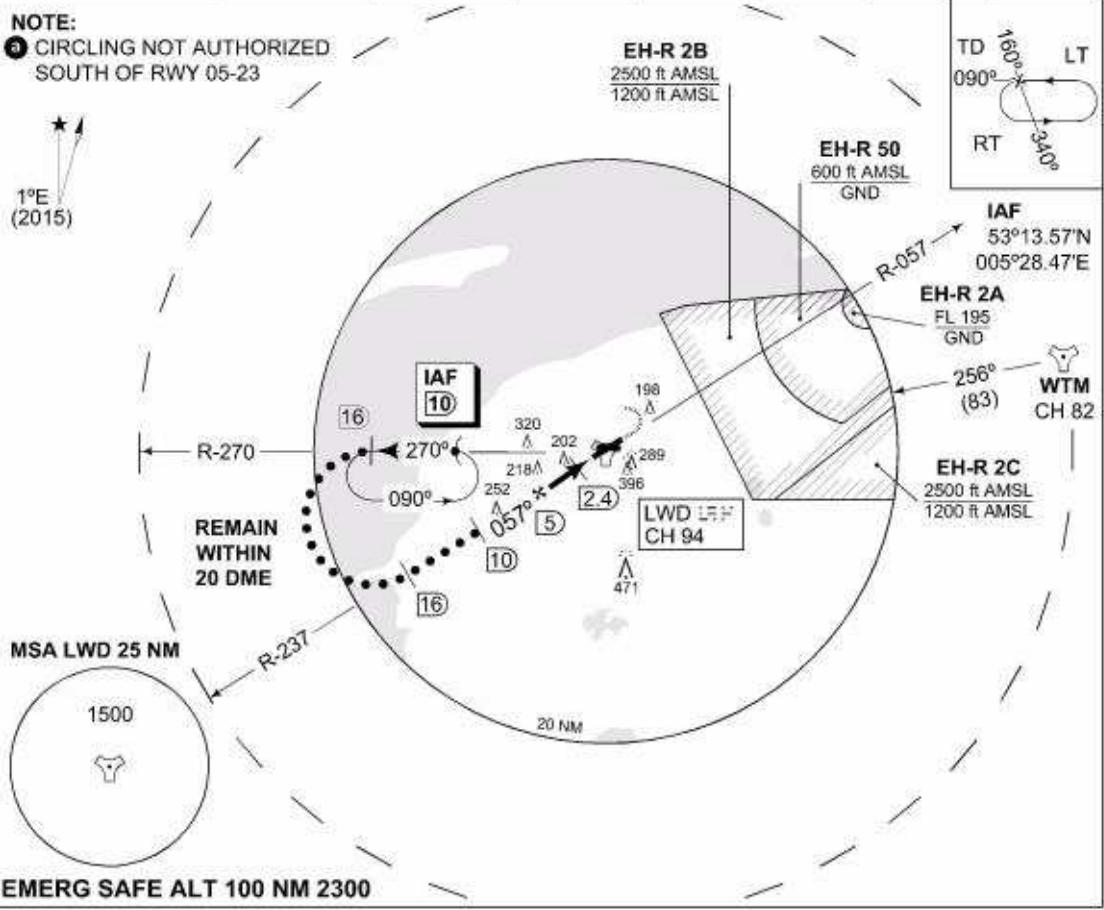
RNLAF 03 MAR 2016

**MIPS INSTRUMENT APPROACH CHART** **AD ELEV 4** **HI-TACAN RWY 05 LEEUWARDEN (EHLW)**

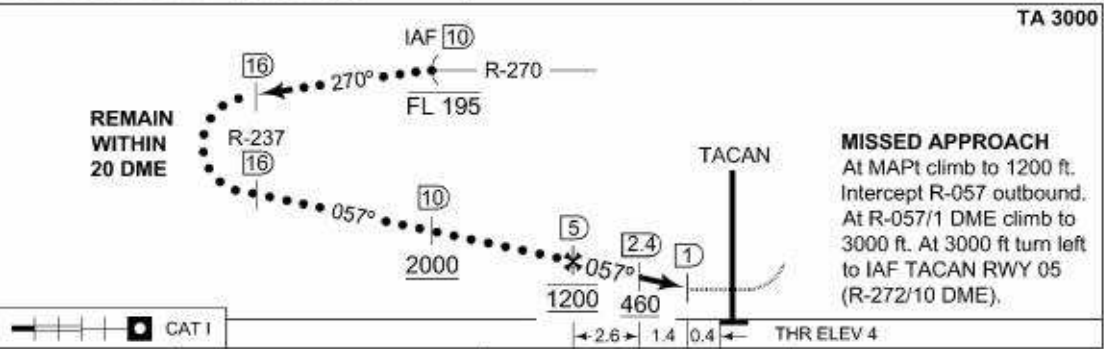
DUTCH MIL 264.325 132.350		RAPCON NORTH 337.000 132.030		LEEUWARDEN TWR 247.675 120.705		GND CTL 281.550	
TACAN LWD CH 94	APP COURSE 057°	FAF ALT 1200 FT	Descent GR	MDA 380	THR ELEV 4	ALS 660 m	LDA 8858 FT

**NOTE:**

- ③ CIRCLING NOT AUTHORIZED SOUTH OF RWY 05-23



EMERG SAFE ALT 100 NM 2300



CATEGORY	C		D		E	
	MINIMA ACCORDING TO PANS-OPS; NOT ACCORDING TO APATC-1					
S-TACAN 05	380 -1200 376 (400-1.2/1.6)		380 -1200 376 (400-1.2/2.0)			
CIRCLING ③	610 -3700 606 (700-3.7)		720 -4600 716 (800-4.6)		820 -6500 816 (900-6.5)	

CHANGES: VAR MIPS

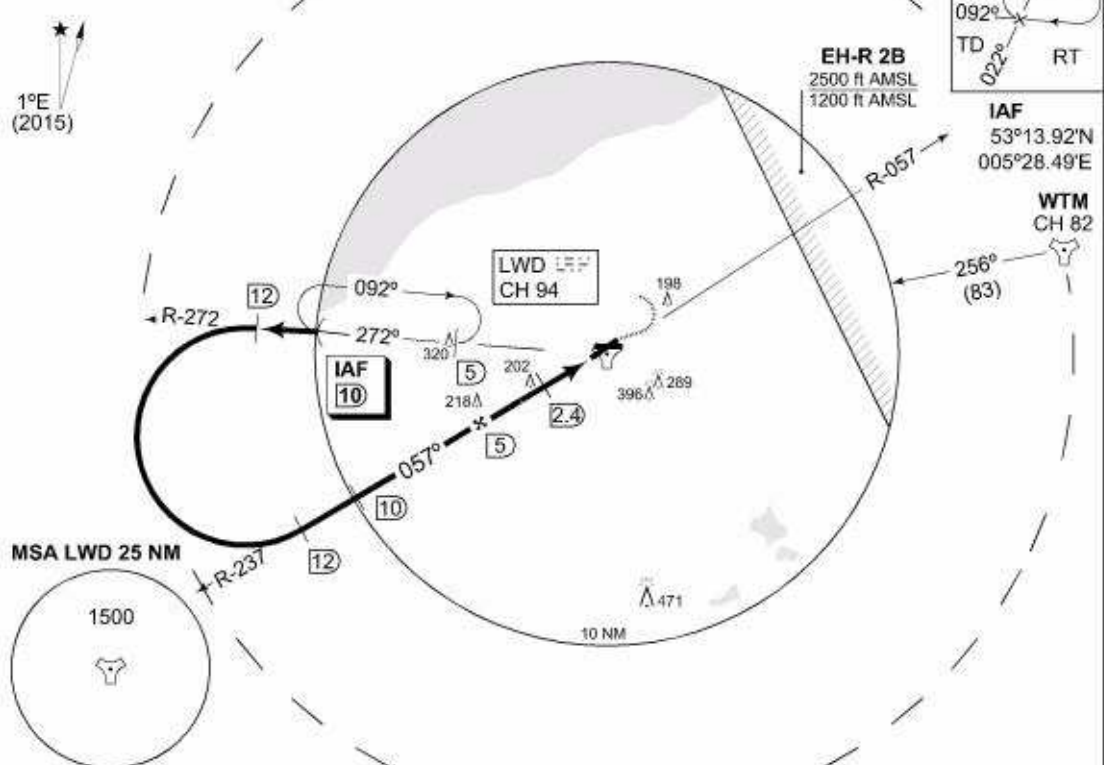
RNLAF 03 MAR 2016



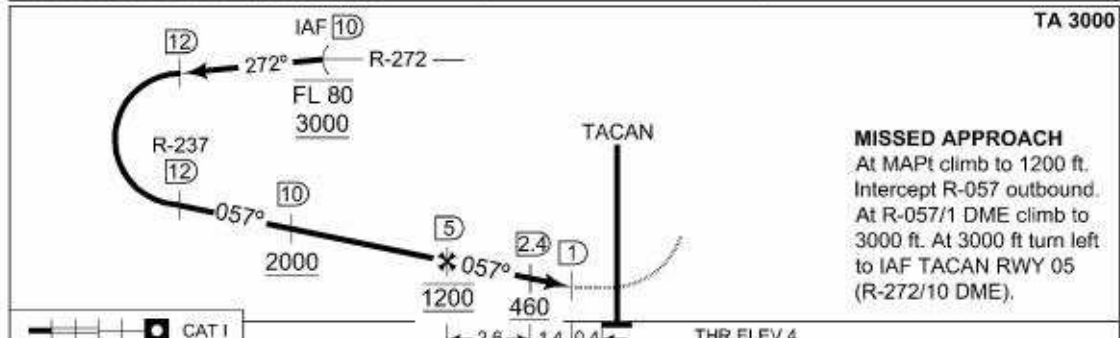
**MIPS INSTRUMENT APPROACH CHART** AD ELEV 4 **TACAN RWY 05 LEEUWARDEN (EHLW)**

DUTCH MIL 264.325 132.350	RAPCON NORTH 337.000 132.030	LEEUWARDEN TWR 247.675 120.705	GND CTL 281.550
TACAN LWD CH 94	APP COURSE 057°	FAF ALT 1200 FT	Descent GR
		MDA <b>380</b>	THR ELEV 4
		ALS 660 m	LDA 8858 FT

**NOTE:**  
**a** CIRCLING NOT AUTHORIZED SOUTH OF RWY 05-23



**EMERG SAFE ALT 100 NM 2300**



CATEGORY	MINIMA ACCORDING TO PANS-OPS; NOT ACCORDING TO APATC-1				
	A	B	C	D	E
S-TACAN 05	<b>380</b> -800 376 (400-0.8/1.6)		<b>380</b> -1200 376 (400-1.2/1.6)	<b>380</b> -1600 376 (400-1.2/2.0)	
CIRCLING <b>a</b>	<b>500</b> -1900 496 (500-1.9)	<b>510</b> -2800 506 (600-2.8)	<b>610</b> -3700 606 (700-3.7)	<b>720</b> -4600 716 (800-4.6)	<b>820</b> -6500 816 (900-6.5)

CHANGES: VAR

MIPS

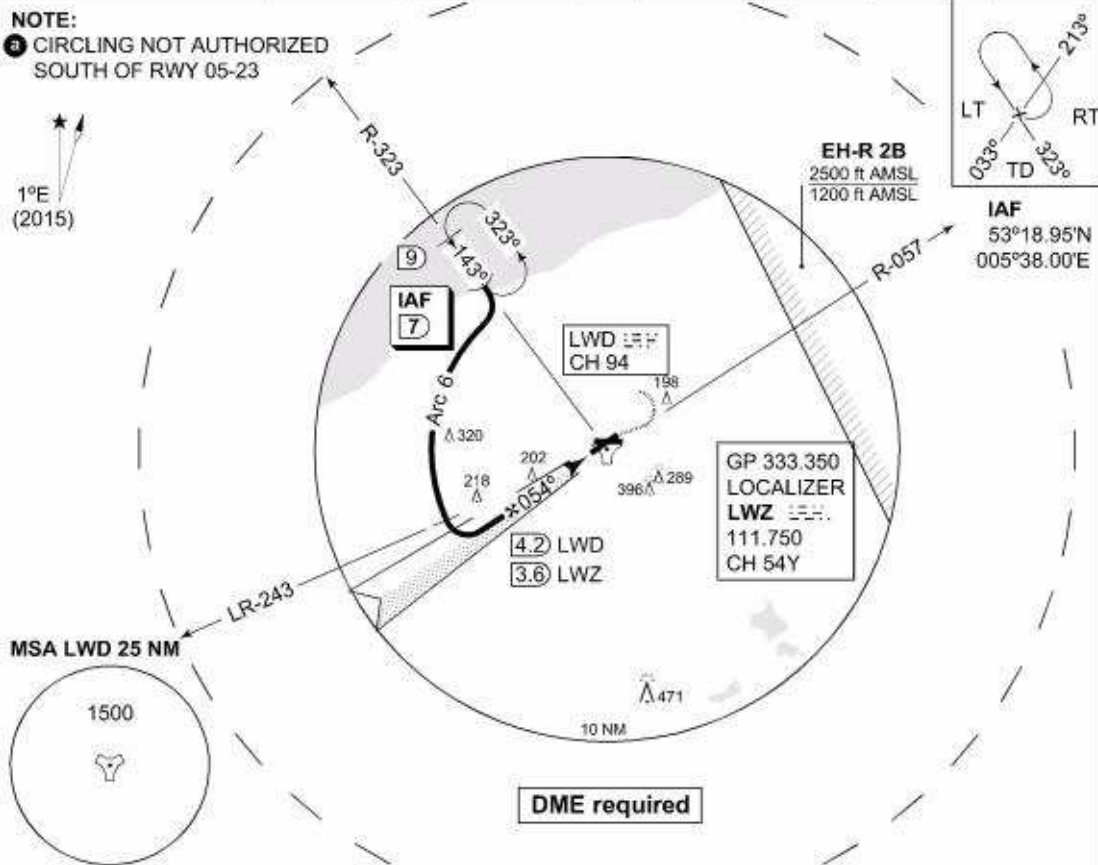
RNLAF 03 MAR 2016

**MIPS INSTRUMENT APPROACH CHART** AD ELEV 4 **COPTER ILS or LOC 054 LEEUWARDEN (EHLW)**

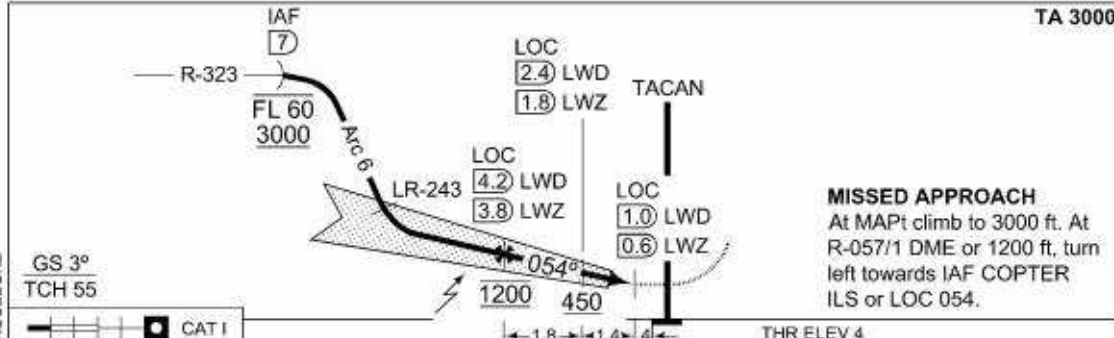
DUTCH MIL 264.325 132.350		RAPCON NORTH 337.000 132.030		LEEUWARDEN TWR 247.675 120.705		GND CTL 281.550		
LOCALIZER / DME LWZ 111.750 / CH 54Y		APP COURSE 054°	GS INTCEPT ALT 1200 FT	GS 3°	DA 204	THR ELEV 4	ALS 660 m	LDA 8858 FT

**NOTE:**

- ⓐ CIRCLING NOT AUTHORIZED SOUTH OF RWY 05-23



**EMERG SAFE ALT 100 NM 2300**



	H
CATEGORY	MINIMA ACCORDING TO PANS-OPS; NOT ACCORDING TO APATC-1
S-ILS 054	204 -400 200 (200-0.4/0.8)
S-LOC 054	350 -400 346 (400-0.4/0.8)
CIRCLING ⓐ	500 -1900 496 (500-1.9)

CHANGES, VAR, RENAME PROCEDURE

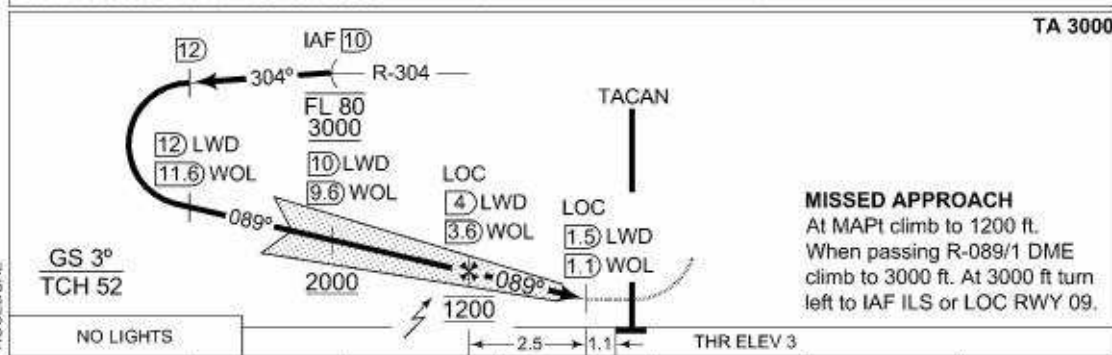
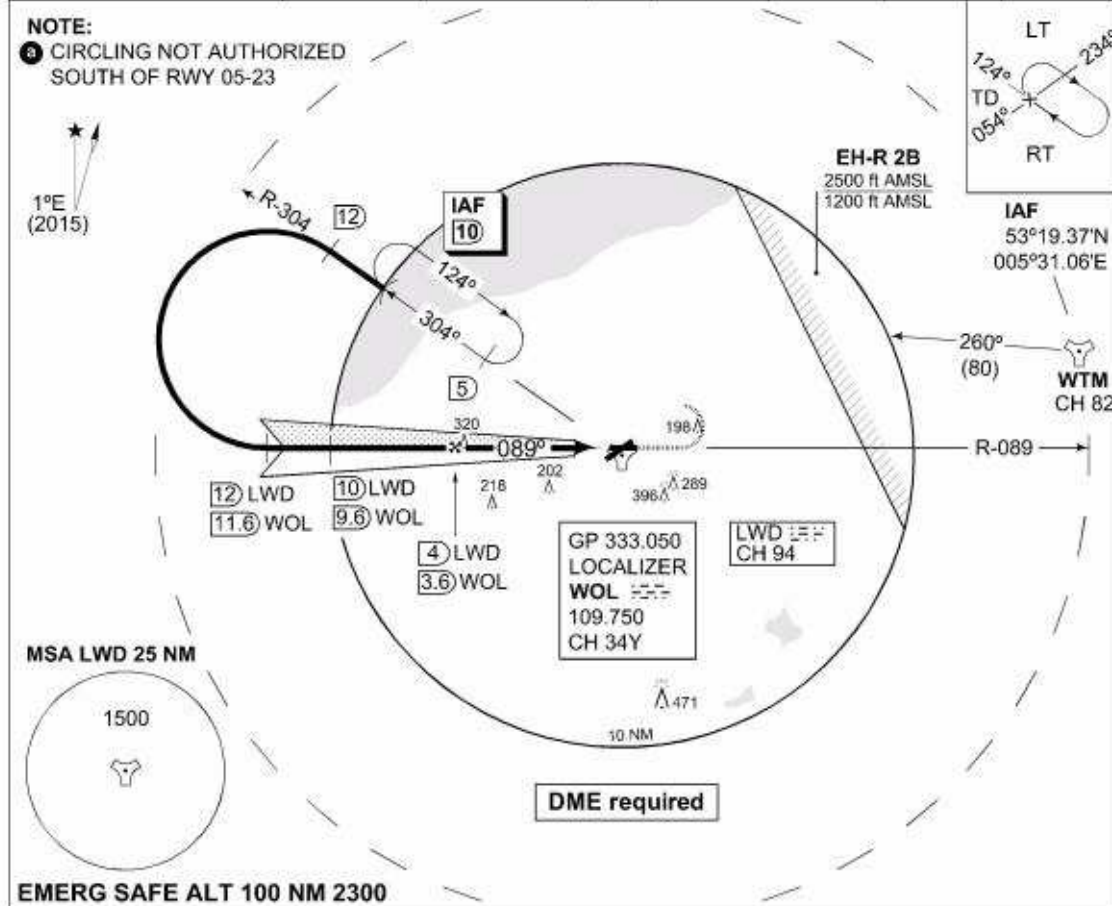
MIPS

RNLAF 03 MAR 2016



**MIPS INSTRUMENT APPROACH CHART** **ILS or LOC RWY 09 LEEUWARDEN (EHLW)**

DUTCH MIL 264.325 132.350		RAPCON NORTH 337.000 132.030		LEEUWARDEN TWR 247.675 120.705		GND CTL 281.550	
LOCALIZER / DME WOL 109.750 / CH 34Y		APP COURSE 089°	GS INTCEPT ALT 1200 FT	GS 3°	MDA <b>SEE CAT</b>	THR ELEV 3	LDA 6368 FT



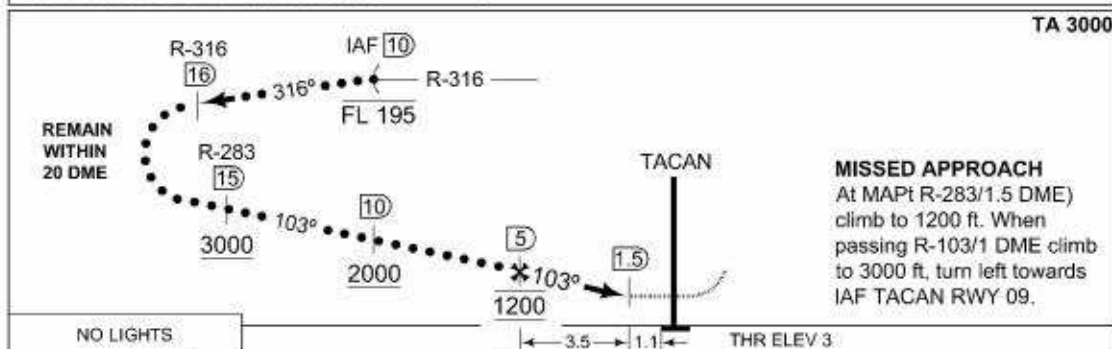
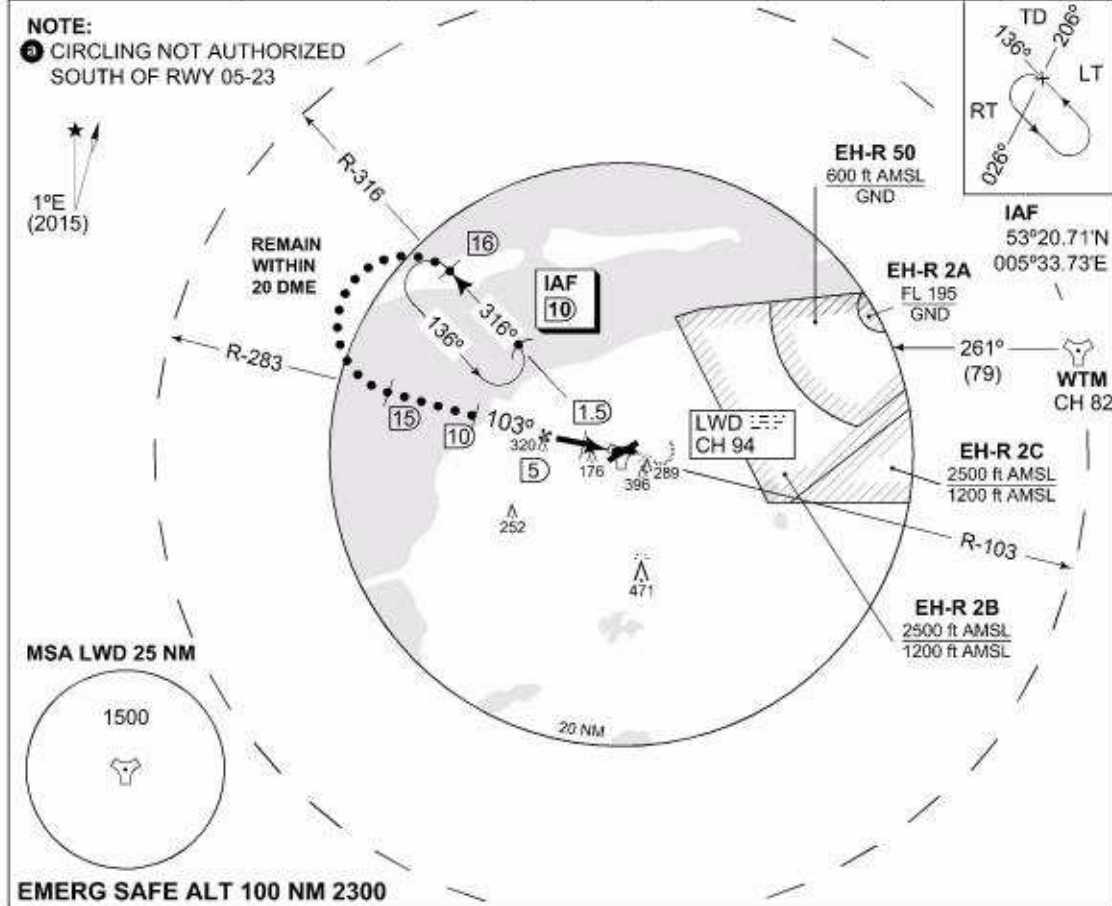
CATEGORY	MINIMA ACCORDING TO PANS-OPS; NOT ACCORDING TO APATC-1					H
	A	B	C	D	E	
S-ILS 09	221-1600 218 (300-1.6/1.6)	231-1600 228 (300-1.6/1.6)	240-1600 237 (300-1.6/1.6)	250-1600 247 (300-1.6/1.6)	268-1600 265 (300-1.6/1.6)	205-800 202 (300-0.8/0.8)
S-LOC 09	430-1600 427 (500-1.6/1.6)	430-1600 427 (500-1.6/1.6)	430-2000 427 (500-2.0/2.0)	430-2400 427 (500-2.4/2.4)	430-2400 427 (500-2.4/2.4)	430-800 427 (500-0.8/0.8)
CIRCLING ⓐ	500-1900 496 (500-1.9)	510-2800 506 (600-2.8)	610-3700 606 (700-3.7)	720-4600 716 (800-4.6)	820-6500 816 (900-6.5)	N.A.

CHANGES: VAR, RENAME PROCEDURE

RNLAF 03 MAR 2016

**MIPS INSTRUMENT APPROACH CHART** **HI-TACAN RWY 09 LEEUWARDEN (EHLW)**

DUTCH MIL 264.325 132.350		RAPCON NORTH 337.000 132.030		LEEUWARDEN TWR 247.675 120.705		GND CTL 281.550	
TACAN LWD CH 94		APP COURSE 103°	FAF ALT 1200 FT	Descent GR	MDA 440	THR ELEV 3	LDA 6368 FT



CATEGORY	C		D		E	
	MINIMA ACCORDING TO PANS-OPS; NOT ACCORDING TO APATC-1					
S-TACAN 09	440 -2000 437 (500-2.0/2.0)		440 -2400 437 (500-2.4/2.4)			
CIRCLING a	610 -3700 606 (700-3.7)		720 -4600 716 (800-4.6)		820 -6500 816 (900-6.5)	

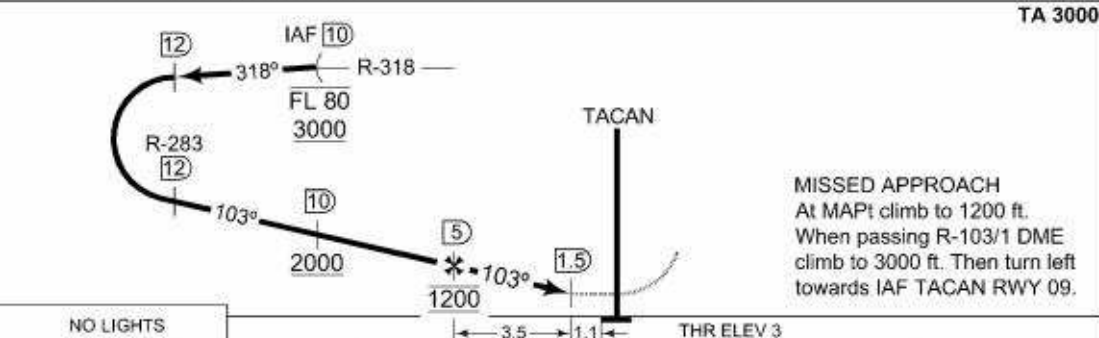
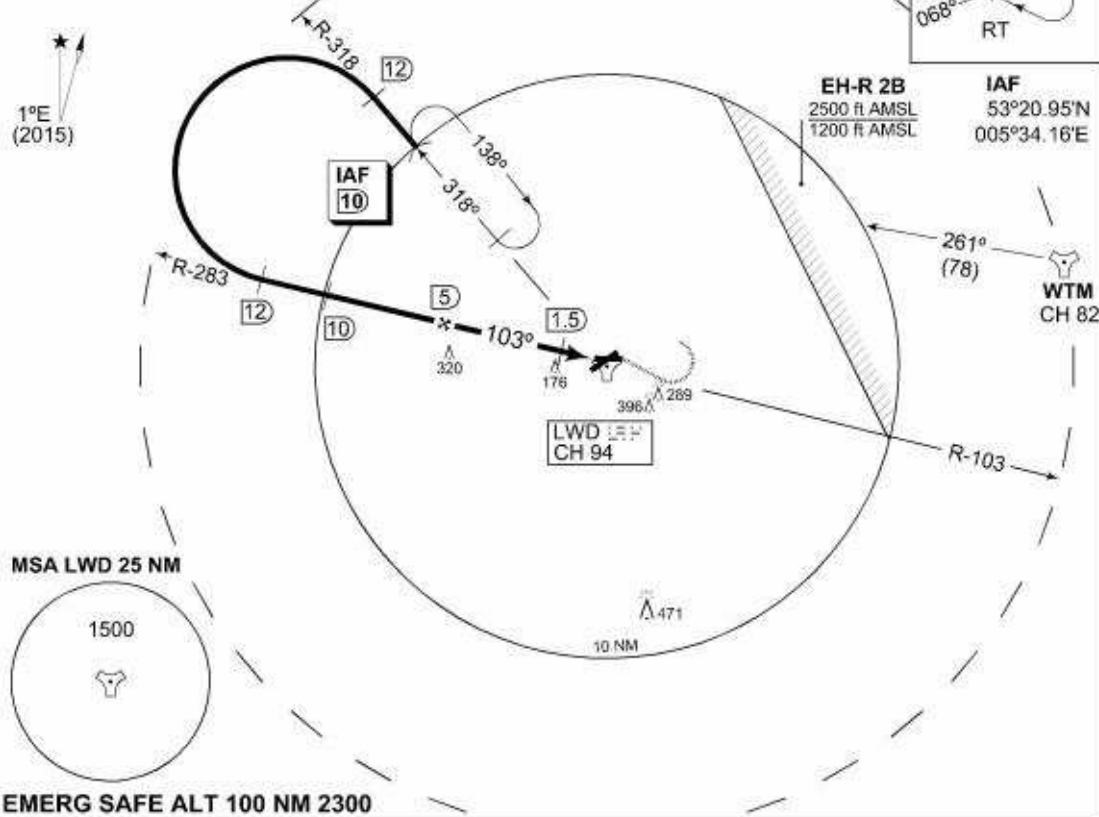
CHANGES: VAR MIPS

RNLAf 03 MAR 2016

**MIPS INSTRUMENT APPROACH CHART** AD ELEV 4 **TACAN RWY 09 LEEUWARDEN (EHLW)**

DUTCH MIL 264.325 132.350		RAPCON NORTH 337.000 132.030		LEEUWARDEN TWR 247.675 120.705		GND CTL 281.550	
TACAN LWD CH 94	APP COURSE 103°	FAF ALT 1200 FT	Descent GR	MDA 440	THR ELEV 3	ALS -	LDA 6368 FT

**NOTE:**  
 ⓐ CIRCLING NOT AUTHORIZED SOUTH OF RWY 05-23



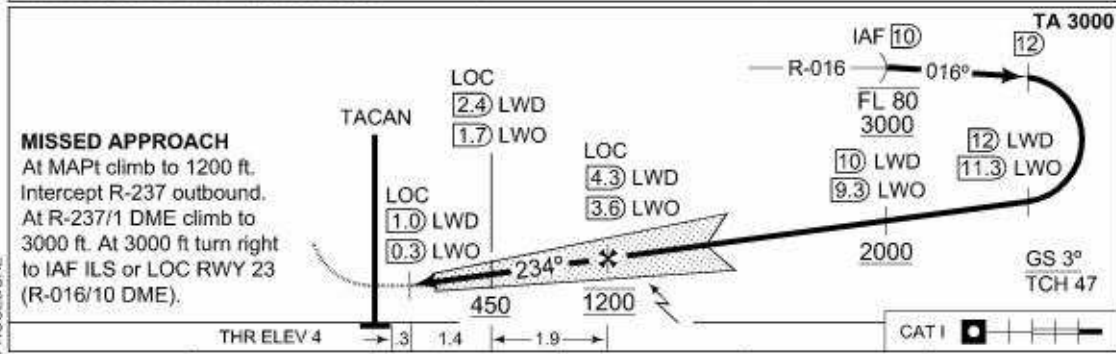
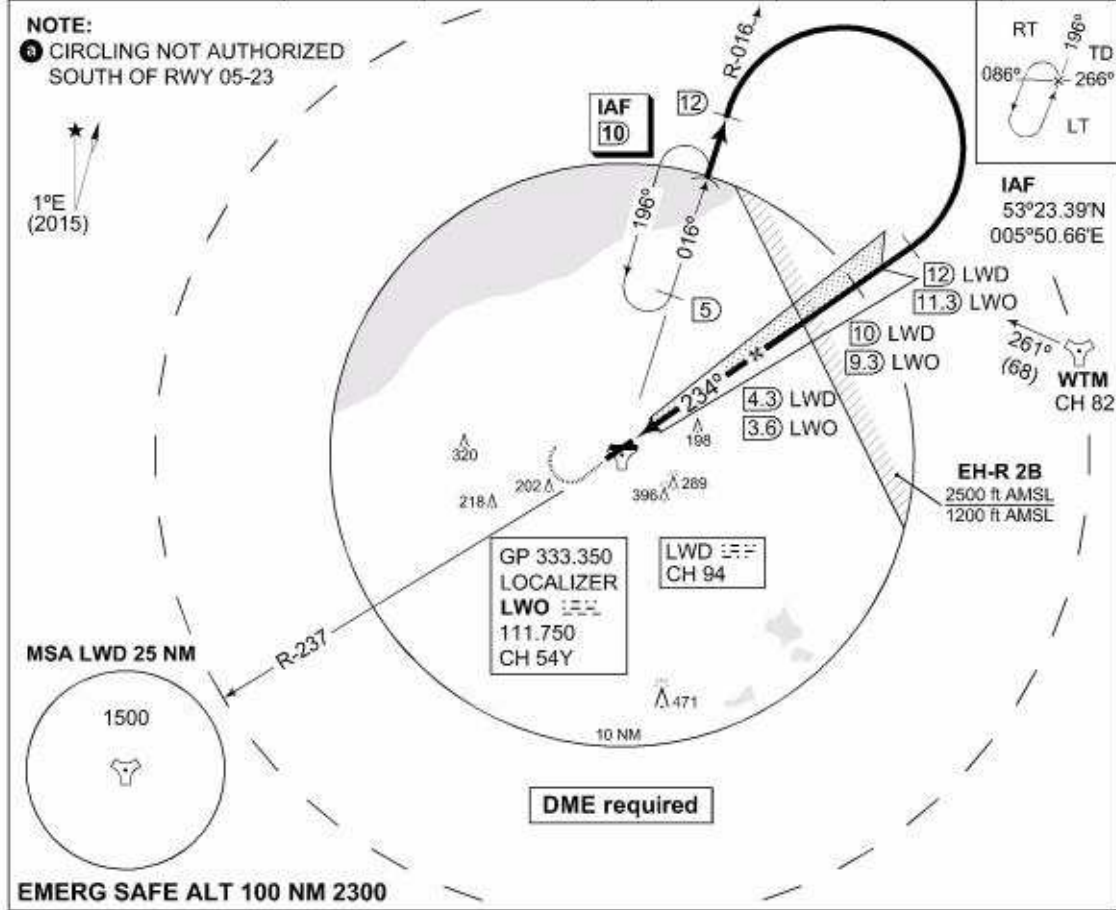
CATEGORY	MINIMA ACCORDING TO PANS-OPS; NOT ACCORDING TO APATC-1				
	A	B	C	D	E
S-TACAN 09	440 -1600 437 (500-1.6/1.6)	440 -2000 437 (500-2.0/2.0)	440 -2400 437 (500-2.4/2.4)		
CIRCLING ⓐ	500 -1900 496 (500-1.9)	510 -2800 506 (600-2.8)	610 -3700 606 (700-3.7)	720 -4600 716 (800-4.6)	820 -6500 816 (900-6.5)

CHANGES: VAR MIPS

RNLAF 03 MAR 2016

**MIPS INSTRUMENT APPROACH CHART** AD ELEV 4 **ILS or LOC RWY 23 LEEUWARDEN (EHLW)**

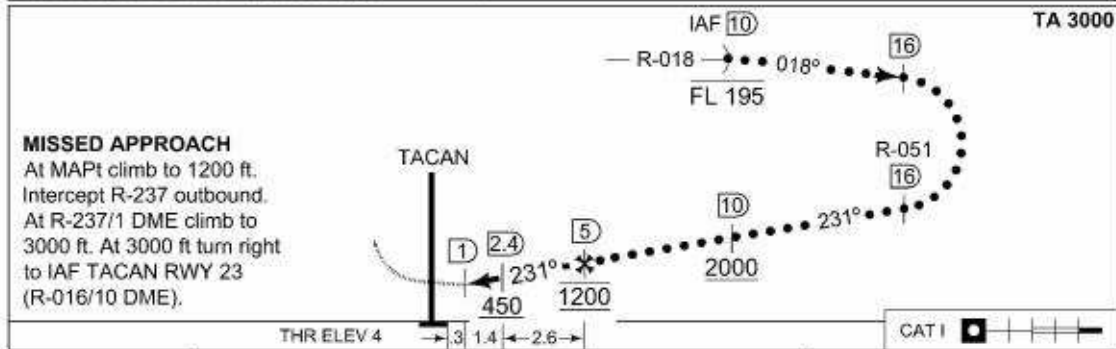
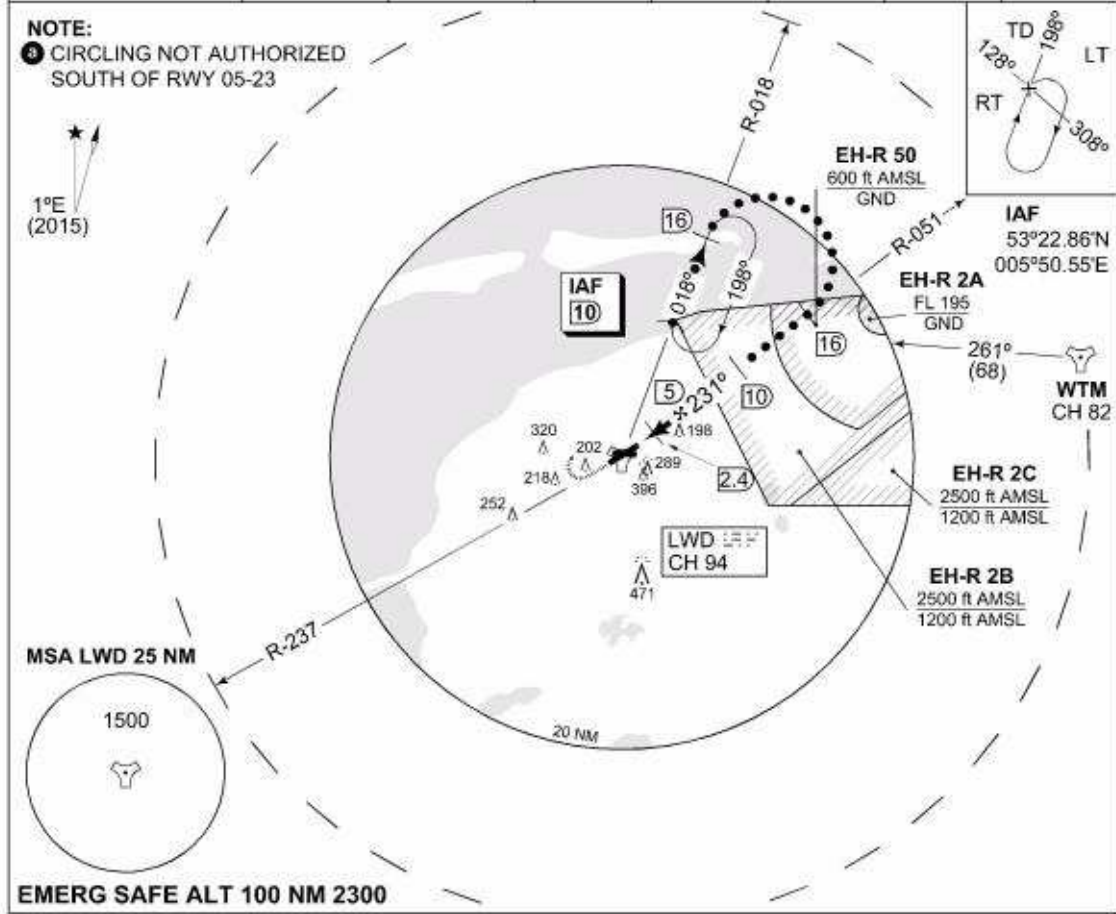
DUTCH MIL 264.325 132.350		RAPCON NORTH 337.000 132.030		LEEUWARDEN TWR 247.675 120.705		GND CTL 281.550	
LOCALIZER / DME LWO 111.750 / CH 54Y	APP COURSE 234°	GS INTCEPT ALT 1200 FT	GS 3°	DA <b>SEE CAT</b>	THR ELEV 4	ALS 720 m	LDA 8652 FT



CATEGORY	MINIMA ACCORDING TO PANS-OPS; NOT ACCORDING TO APATC-1				
	A	B	C	D	E
S-ILS 23	217-800 213 (300-0.8/1.6)	227-800 223 (300-0.8/1.6)	237-800 233 (300-0.8/1.6)	247-800 243 (300-0.8/1.6)	265-800 262 (300-0.8/1.6)
S-LOC 23	340-800 336 (400-0.8/1.6)		340-1200 336 (400-1.2/1.6)		
CIRCLING a	500-1900 496 (500-1.9)	510-2800 506 (600-2.8)	610-3700 606 (700-3.7)	720-4600 716 (800-4.6)	820-6500 816 (900-6.5)

**MIPS INSTRUMENT APPROACH CHART** **HI-TACAN RWY 23 LEEUWARDEN (EHLW)**

DUTCH MIL 264.325 132.350		RAPCON NORTH 337.000 132.030		LEEUWARDEN TWR 247.675 120.705		GND CTL 281.550	
TACAN LWD CH 94	APP COURSE 231°	FAF ALT 1200 FT	Descent GR	MDA 380	THR ELEV 4	ALS 720 m	LDA 8652 FT

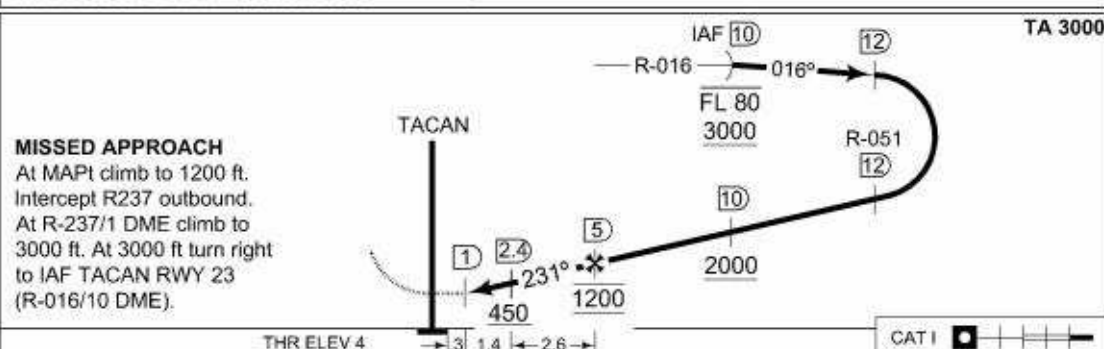
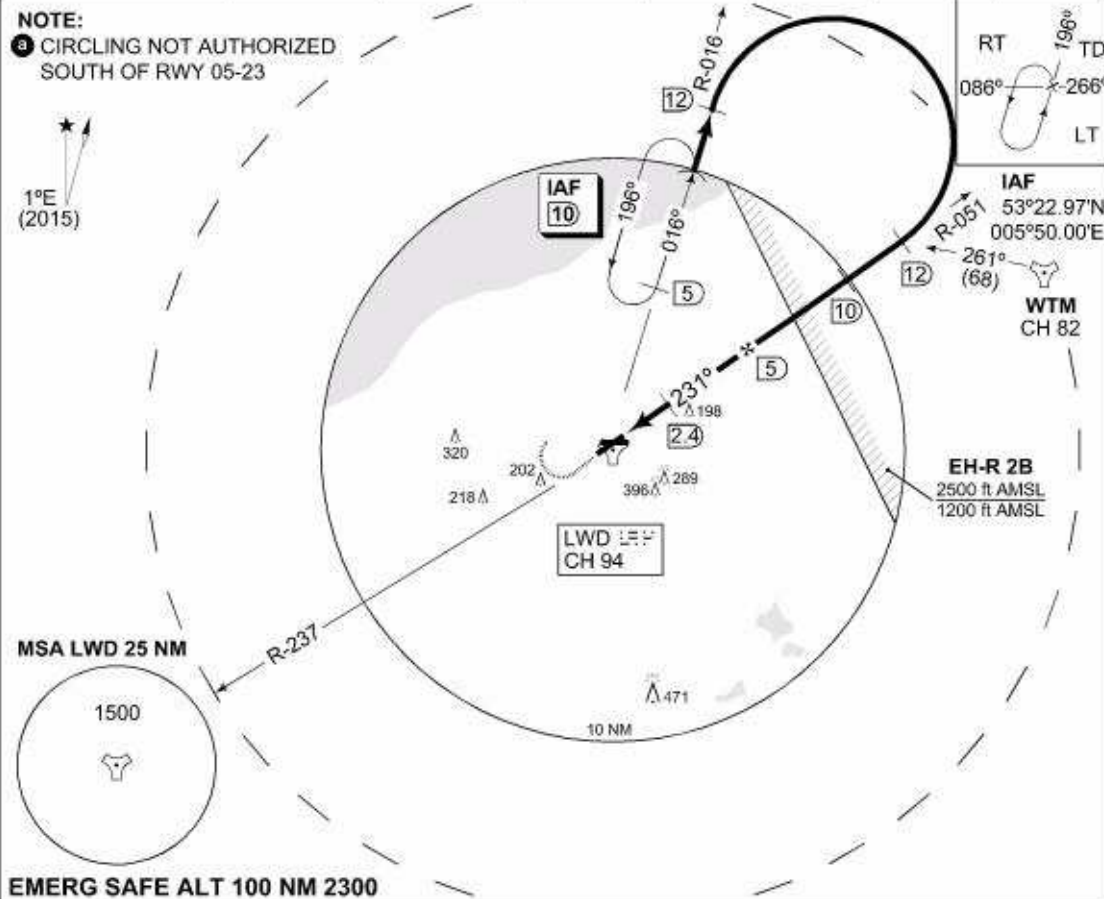


CATEGORY	C	D	E
MINIMA ACCORDING TO PANS-OPS; NOT ACCORDING TO APATC-1			
S-TACAN 23	380 -1200 376 (400-1.2/1.6)	380 -1200 376 (400-1.2/2.0)	
CIRCLING ⓐ	610 -3700 606 (700-3.7)	720 -4600 716 (800-4.6)	820 -6500 816 (900-6.5)



**MIPS INSTRUMENT APPROACH CHART** **TACAN RWY 23 LEEUWARDEN (EHLW)**

DUTCH MIL 264.325 132.350		RAPCON NORTH 337.000 132.030		LEEUWARDEN TWR 247.675 120.705		GND CTL 281.550	
TACAN LWD CH 94	APP COURSE 231°	FAF ALT 1200 FT	Descent GR	MDA 380	THR ELEV 4	ALS 720 m	LDA 8652 FT



CATEGORY	A	B	C	D	E
MINIMA ACCORDING TO PANS-OPS; NOT ACCORDING TO APATC-1					
S-TACAN 23	380 -800 376 (400-0.8/1.6)	380 -1200 376 (400-1.2/1.6)	380 -1200 376 (400-1.2/2.0)		
CIRCLING ⓐ	500 -1900 496 (500-1.9)	510 -2800 506 (600-2.8)	610 -3700 606 (700-3.7)	720 -4600 716 (800-4.6)	820 -6500 816 (900-6.5)

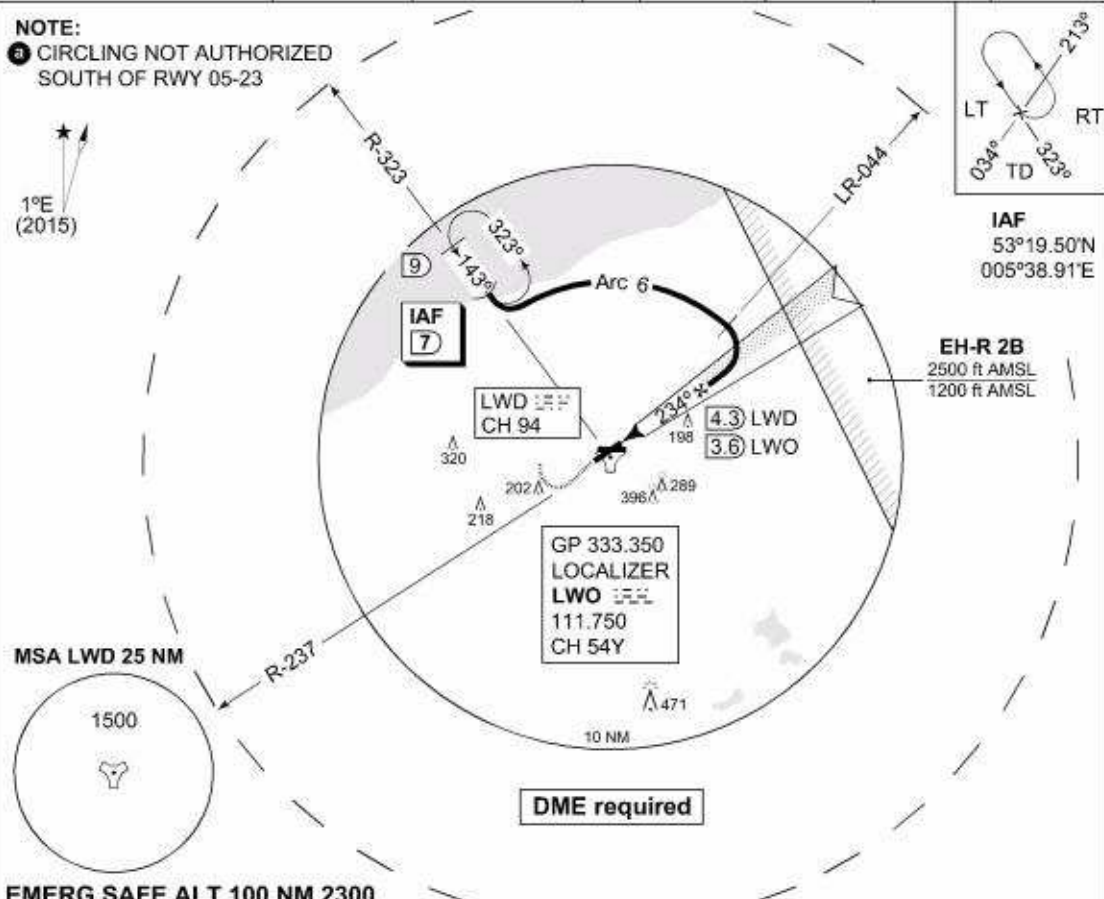
**MIPS INSTRUMENT APPROACH CHART** **COPTER ILS or LOC 234 LEEUWARDEN (EHLW)**

DUTCH MIL 264.325 132.350		RAPCON NORTH 337.000 132.030		LEEUWARDEN TWR 247.675 120.705		GND CTL 281.550	
LOCALIZER / DME LWO 111.750 / CH 54Y	APP COURSE 234°	GS INTCEPT ALT 1200 FT	GS 3°	DA 204	THR ELEV 4	ALS 720 m	LDA 8652 FT

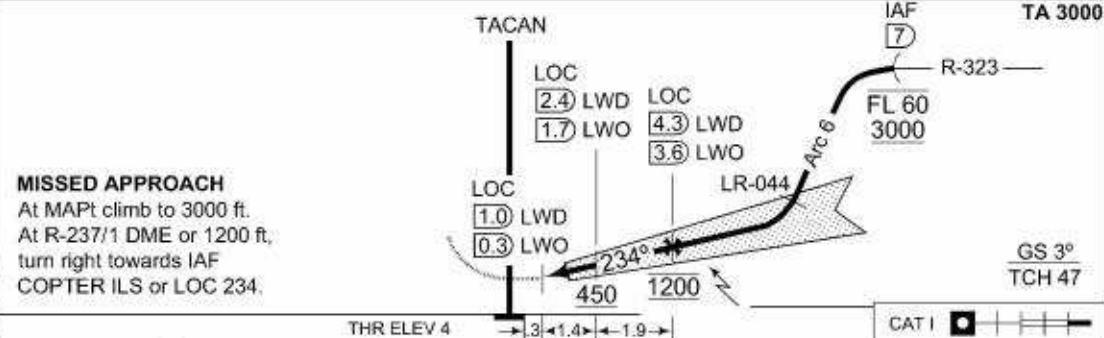
**NOTE:**

- a** CIRCLING NOT AUTHORIZED SOUTH OF RWY 05-23

1°E  
(2015)



**EMERG SAFE ALT 100 NM 2300**



**MISSED APPROACH**  
At MAPt climb to 3000 ft.  
At R-237/1 DME or 1200 ft,  
turn right towards IAF  
COPTER ILS or LOC 234.

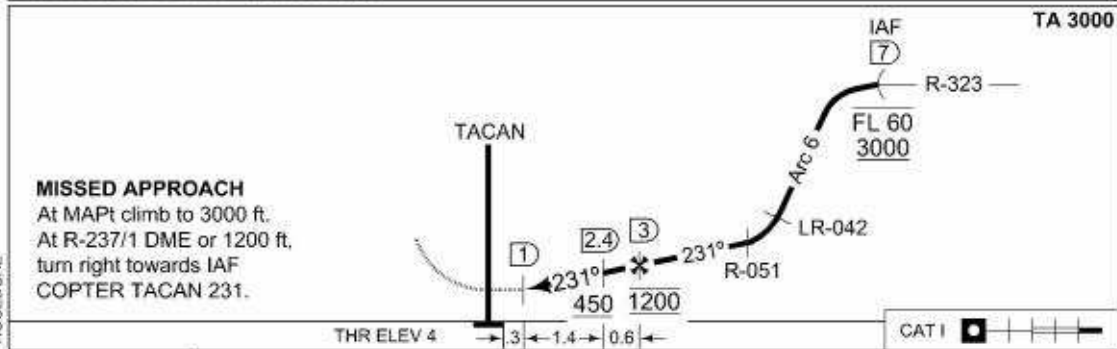
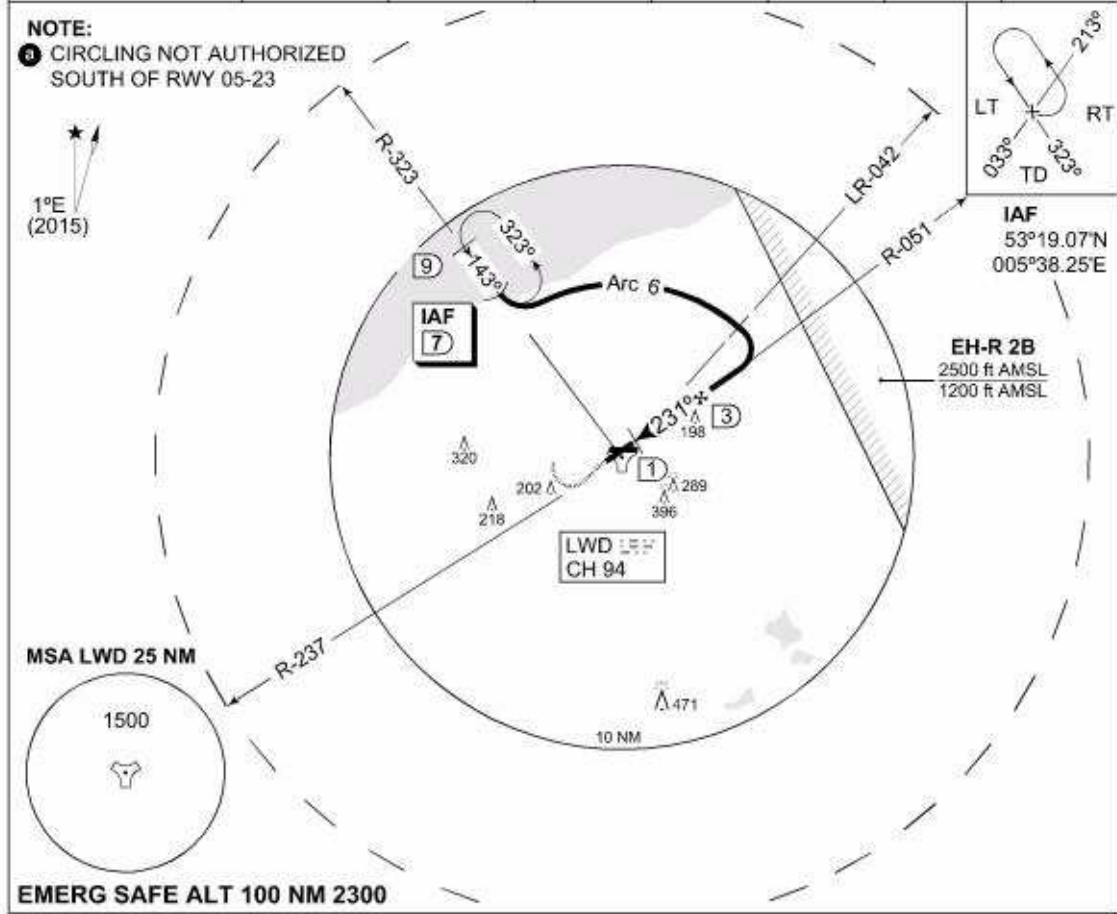
CHANGES: VAR, RENAME PROCEDURE

CATEGORY	H
	MINIMA ACCORDING TO PANS-OPS, NOT ACCORDING TO APATC-1
S-ILS 234	<b>204</b> -400 200 (200-0.4/0.8)
S-LOC 234	<b>340</b> -400 336 (400-0.4/0.8)
CIRCLING <b>a</b>	<b>500</b> -1900 496 (500-1.9)

PNLAF 03 MAR 2016

**MIPS INSTRUMENT APPROACH CHART** **COPTER TACAN 231 LEEUWARDEN (EHLW)**

DUTCH MIL 264.325 132.350		RAPCON NORTH 337.000 132.030		LEEUWARDEN TWR 247.675 120.705		GND CTL 281.550	
TACAN LWD CH 94	APP COURSE 231°	FAF ALT 1200 FT	Descent GR	MDA 380	THR ELEV 4	ALS 720 m	LDA 8652 FT

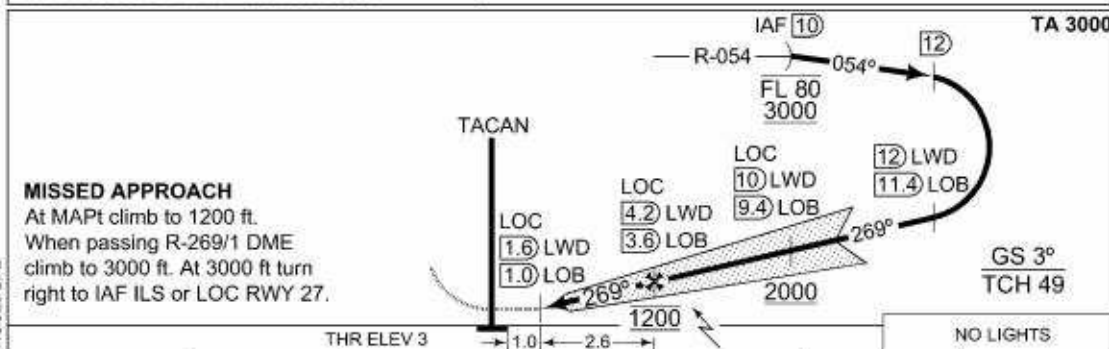
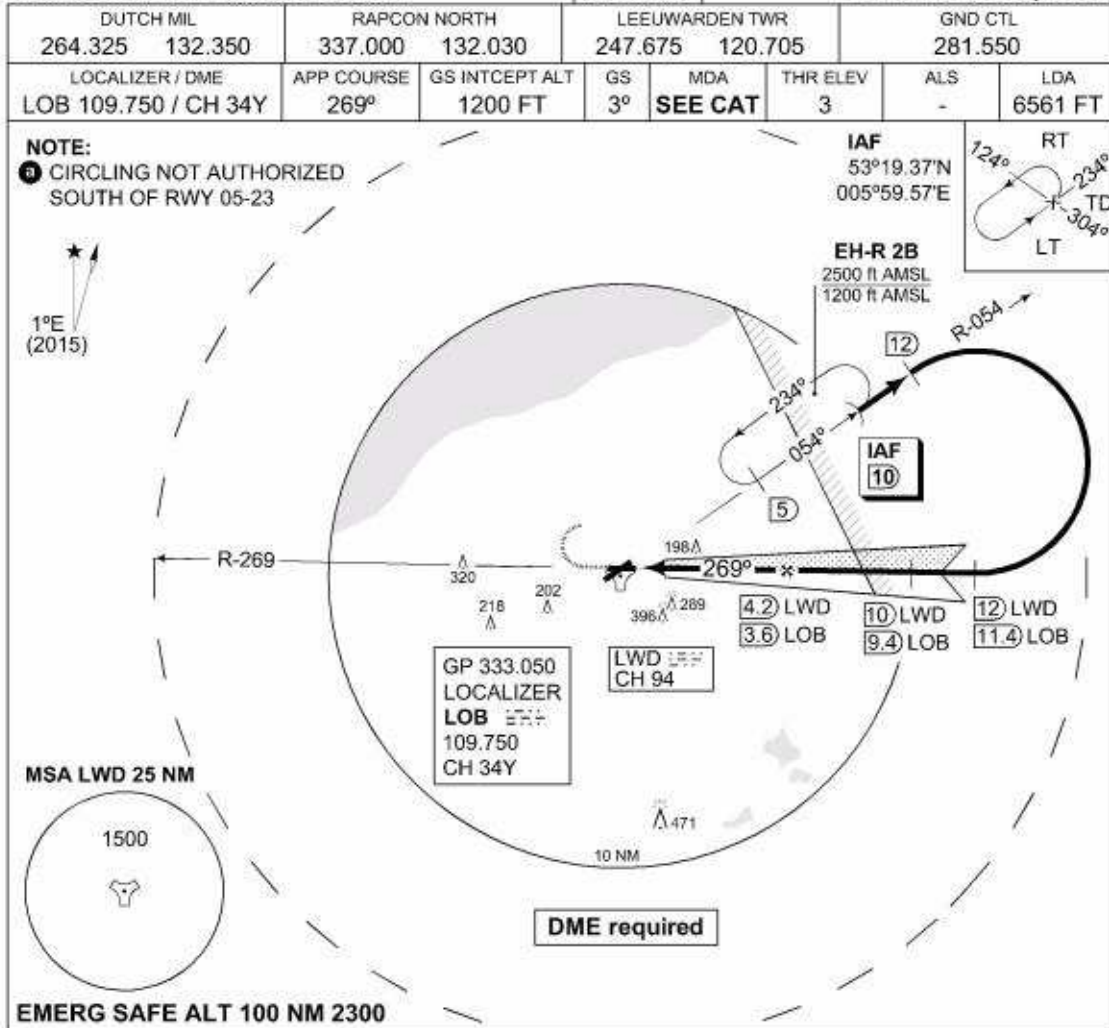


<b>CATEGORY</b>	<b>A</b>
<b>COPTER TACAN 231</b>	<b>380 -400 376 (400-0.4/0.8)</b>
<b>CIRCLING ①</b>	<b>500 -1900 496 (500-1.9)</b>

CHANGES: VAR, RENAME PROCEDURE

RNLAF 03 MAR 2016

**MIPS INSTRUMENT APPROACH CHART** AD ELEV 4 **ILS or LOC RWY 27 LEEUWARDEN (EHLW)**



CATEGORY	MINIMA ACCORDING TO PANS-OPS; NOT ACCORDING TO APATC-1					
	A	B	C	D	E	H
S-ILS 27	203-1600 200 (200-1.6/1.6)	211-1600 208 (300-1.6/1.6)	220-1600 217 (300-1.6/1.6)	230-1600 227 (300-1.6/1.6)	240-1600 237 (300-1.6/1.6)	203-800 200 (200-0.8/0.8)
S-LOC 27	360-1600 357 (400-1.6/1.6)			360-2000 357 (400-2.0/2.0)		360-800 357 (400-0.8/0.8)
CIRCLING a	500-1900 496 (500-1.9)	510-2800 506 (600-2.8)	610-3700 606 (700-3.7)	720-4600 716 (800-4.6)	820-6500 816 (900-6.5)	N.A.

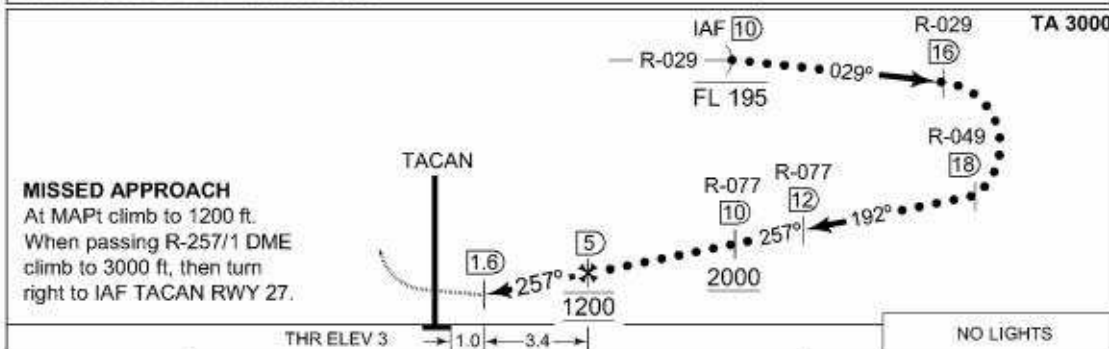
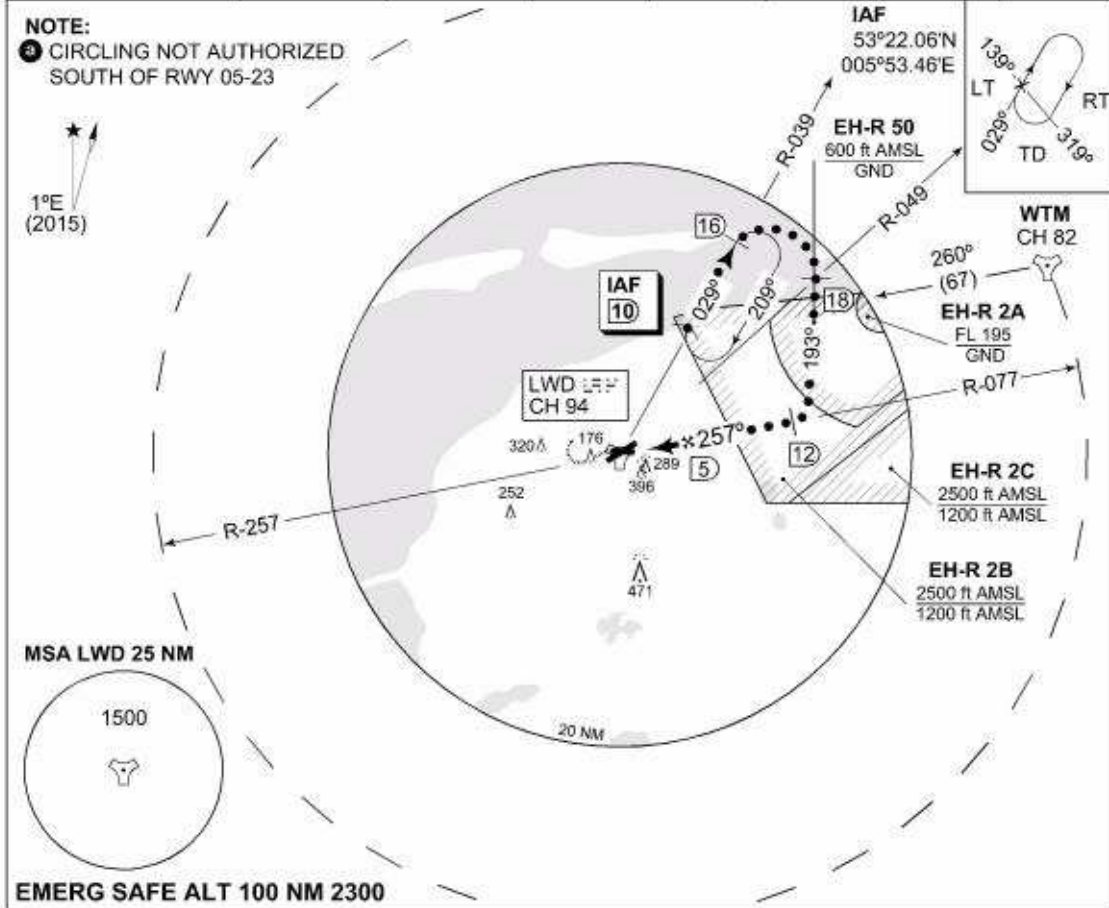
CHANGES: VAR, RENAME PROCEDURE

MIPS

RNLAF 03 MAR 2016

**MIPS INSTRUMENT APPROACH CHART** **HI-TACAN RWY 27 LEEUWARDEN (EHLW)**

DUTCH MIL 264.325 132.350		RAPCON NORTH 337.000 132.030		LEEUWARDEN TWR 247.675 120.705		GND CTL 281.550	
TACAN LWD CH 94	APP COURSE 257°	FAF ALT 1200 FT	Descent GR	MDA 390	THR ELEV 3	ALS -	LDA 6561 FT



CATEGORY	C	D	E
	MINIMA ACCORDING TO PANS-OPS; NOT ACCORDING TO APATC-1		
S-TACAN 27	<b>390</b> -1600 387 (400-1.6/1.6)	<b>390</b> -2000 387 (400-2.0/2.0)	
CIRCLING ⓐ	<b>610</b> -3700 606 (700-3.7)	<b>720</b> -4600 716 (800-4.6)	<b>820</b> -6500 816 (900-6.5)

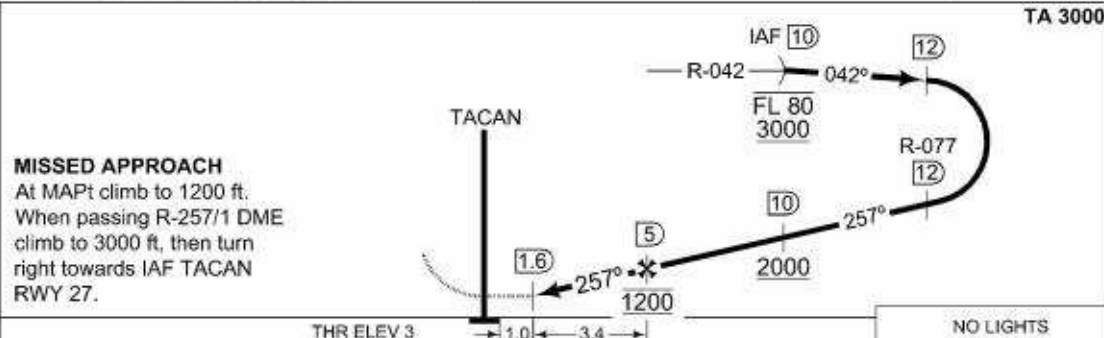
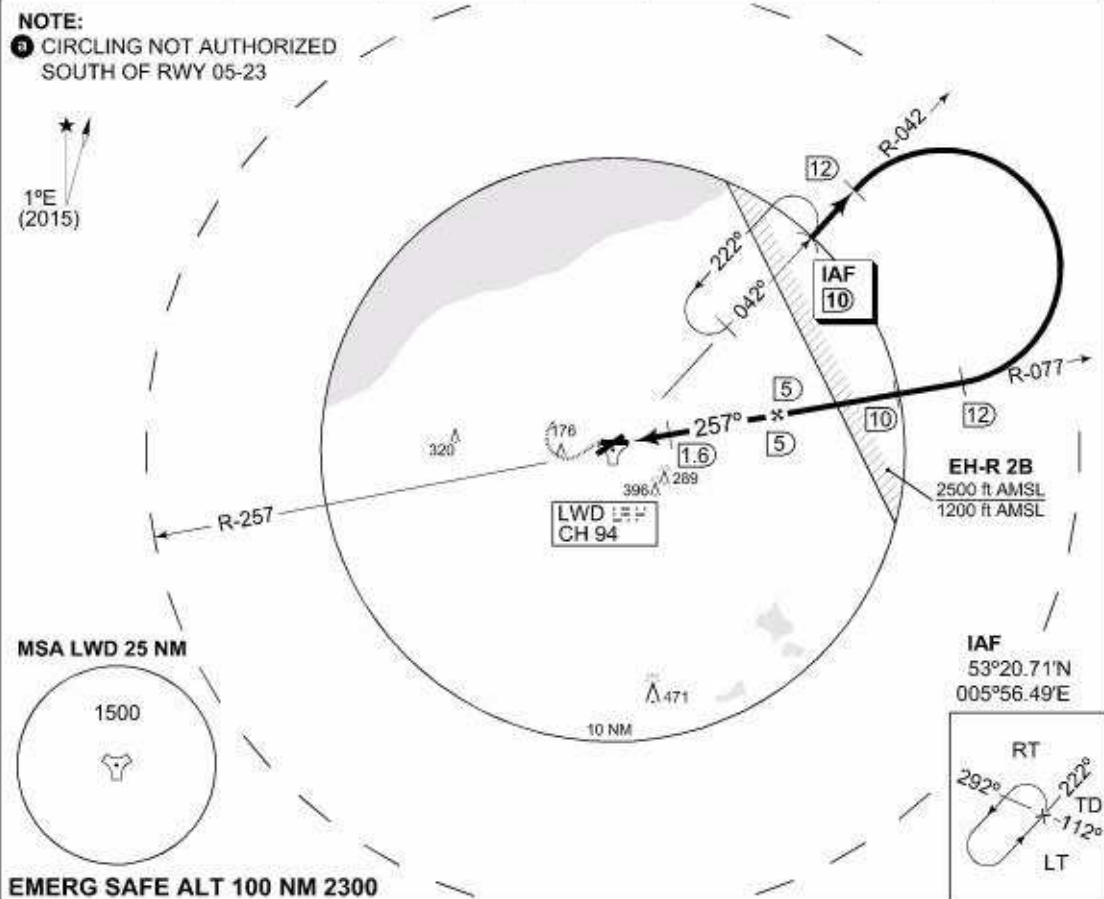
CHANGES: VAR

**MIPS**

RNLAF 03 MAR 2016

**MIPS INSTRUMENT APPROACH CHART** AD ELEV 4 **TACAN RWY 27 LEEUWARDEN (EHLW)**

DUTCH MIL 264.325 132.350		RAPCON NORTH 337.000 132.030		LEEUWARDEN TWR 247.675 120.705		GND CTL 281.550	
TACAN LWD CH 94	APP COURSE 257°	FAF ALT 1200 FT	Descent GR	MDA 390	THR ELEV 3	ALS -	LDA 6561 FT



CATEGORY	A	B	C	D	E
MINIMA ACCORDING TO PANS-OPS; NOT ACCORDING TO APATC-1					
S-TACAN 27	390 -1600 387 (400-1.6/1.6)			390 -2000 387 (400-2.0/2.0)	
CIRCLING ⓐ	500 -1900 496 (500-1.9)	510 -2800 506 (600-2.8)	610 -3700 606 (700-3.7)	720 -4600 716 (800-4.6)	820 -6500 816 (900-6.5)

CHANGES: VAR

RNLAF 03 MAR 2016