

VOLKEL

EHVK AD 2.1 Aerodrome location indicator and name

EHVK - Volkel

EHVK AD 2.2 Geographical and administrative data

1	ARP	51°39'25.95"N 005°42'28.17"E
2	Direction and distance from city	213° MAG/12.6 NM NIJMEGEN
3	Elevation/Reference temperature	+ 73 ft AMSL/22.2° C (JUL)
4	MAG VAR/Annual change	1°03'E (JAN 2015)/8'E
5	AD operating authority Postal address Visitors' address Telephone E-mail AFTN	RNLAF DIB loket CLSK Vliegbasis Volkel MPC 86A P.O. Box 8762 4820 BB Breda Zeelandsedijk 10 5408 ZW Volkel +31(0)413 276911 vkl.lvl.lw.clsk@mindef.nl EHMCZPZX
6	Types of TFC permitted (IFR/VFR)	IFR/VFR
7	Remarks	Nil

EHVK AD 2.3 Operational hours

1	AD OPR HR	MON/FRI 0700/1545 (0600/1445)
2	Customs and immigration	2 HR PN
3	Health and sanitation	HO
4	AIS Briefing office	HO
5	ATS Reporting Office (ARO)	HO
6	MET Briefing Office	HO
7	ATS	HO
8	Fuelling	HO
9	Handling	HO
10	Security	HO
11	De-icing	HO
12	Remarks	PPR 24 HRS. See 2.23

EHVK AD 2.4 Handling services and facilities

1	Cargo-handling facilities	Yes
2	Fuel/oil types	F-34, H-515, O-148, O-155, O-156
3	Fuelling facilities/capacity	No limitations
4	Oxygen	LHOX, LOX
5	Nitrogen	LPNIT, HPNIT
6	De-icing facilities/type	S-738, S-742
7	Starting units	DSA 150, DSA600, SO 8.5, JAS, EC 3500, DC 3500
8	Hangar space for visiting ACFT	No
9	Repair facilities	F16
10	Remarks	Nil

EHVK AD 2.5 Passenger facilities

1	Remain overnight	AVBL O/R
2	Medical facilities	Medical officer, ambulance
3	Remarks	Nil

EHVK AD 2.6 Rescue and fire fighting services

1	AD category for fire fighting	NATO CAT 7
2	Remarks	Nil

EHVK AD 2.7 Seasonal availability - clearing

1	Seasonal availability	All seasons
2	Snow removal equipment	Yes
3	Remarks	Caution advised in winter during ice conditions

EHVK AD 2.8 Aprons, taxiways and check locations/positions data

1	Apron surface and strength	North of beginning RWY 06, PCN: 61 R/B/W/T
2	TWY width, surface and strength	Width 39 ft, PCN: 42 R/B/W/T
3	Remarks	Max. Wingspan TWY: 39 ft

EHVK AD 2.9 Surface movement guidance and control system and markings

According to STANAG 3158		
1	Remarks	Nil

EHVK AD 2.10 Aerodrome obstacles

Obstacles along RWYs and TWYs do not conform to standard obstacle clearance requirements. See Aerodrome Chart.

EHVK AD 2.11 Meteorological information provided

1	Associated MET Office	Volkel
2	Hours of service MET Office outside hours	HO Joint MET Group
3	Office responsible for TAF preparation Periods of validity	Volkel 9 HRS
4	Type of landing forecast Interval of issuance	Colourstate trend Hourly
5	Flight documentation Language(s) used	Charts, abbreviated plain language text English/Dutch
6	Charts and other information AVBL for briefing or consultation	SWC, prognostic upper air chart, radar satellite images
7	Supplementary equipment AVBL for providing information	Telefax
8	Remarks	Tel. Volkel: +31(0)413 278047 Tel. Joint MET Group: +31(0)164 693111

EHVK AD 2.12 Runway physical characteristics

1	RWY dimensions/a-gear	See Aerodrome Chart. Values in ft.
2	RWY surface	Tarmac/concrete
3	RWY strength	24R: 36 R/B/W/T 06L: 42 R/B/W/T 24L: 42 R/B/W/T 06R: 41 R/B/W/T

EHVK AD 2.13 Declared distances

See Aerodrome Chart. Values in ft.

EHVK AD 2.14 Approach and runway lighting

According to STANAG 3316		
1	Approach lighting	RWY 24R: CAT I. 852 m RWY 06L: CAT I. 880 m RWY 24L: SALS. 423 m RWY 06R: SALS. 420 m
2	RWY lighting	VCL, VHI
3	PAPI	Situated on the left side of all RWYs
4	Remarks	Nil

EHVK AD 2.15 Other lighting, secondary power supply

1	LDI	Lighted
2	TWY edge lighting	VB
3	Emergency RWY lighting	Moskit type 2 (according to STANAG 3534)
4	Emergency TWY edge lighting	Retroreflective markers
5	Secondary power supply/switch-over	AVBL, switch over time 15 seconds
6	Remarks	Nil

EHVK AD 2.16 Helicopter landing area

1	Location	Westside of the AD, between TWY and RWY, north of the beginning of RWY 06L. See Aerodrome Chart
2	Marking	Daylight marking
3	Lighting	Yes
4	Remarks	Nil

EHVK AD 2.17 Air traffic services airspace

1	Designation and lateral limits	Volkel control zone 51°38'52.86"N 005°23'22.88"E; 51°45'05.93"N 005°33'24.21"E; along clockwise arc (radius 8 NM, centre 51°39'25.95"N 005°42'28.17"E) to 51°33'45.27"N 005°51'29.87"E; 51°27'33.73"N 005°41'28.57"E; to point of origin.
2	Vertical limits	GND to 3000 ft AMSL
3	Airspace classification	D
4	ATS unit call sign Language(s)	Contact initially Volkel TWR, outside HO Dutch Mil Info 132.350 MHz. English
5	Transition altitude	IFR: 3000 ft AMSL; VFR: 3500 ft AMSL
6	Remarks	Nil

EHVK AD 2.18 Air traffic services communication facilities

STATION/ SERVICE	CALL SIGN OR IDENTIFICATION	FREQUENCY MHz	HOURS	REMARKS
1	2	3	4	5
	As appropriate	121.500 243.000	HO	Emergency FREQ for all services
TWR	Volkel Tower	136.080 ^{*)} 122.100 372.225 ^{*)} 257.800	HO	*) Primary FREQ Outside HO contact Dutch Mil Info 132.350 MHz Radar equipped
GND CTL	Volkel Ground	386.775	HO	
APP	RAPCON South	123.180 ^{*)} 122.100 379.925 ^{*)}	HO	
RADAR	Volkel Arrival	122.100 241.925	HO	Through APP

EHVK AD 2.19 Radio navigation and landing aids

FACILITY	ID	CHANNEL FREQ.	HOURS	CO-ORD.	RANGE/ ALTITUDE	REMARKS
1	2	3	4	5	6	7
DME 24R	VLO	CH 44Y	HO	51°39'46.53"N 005°43'12.18"E		
ILS 24R LOCALIZER	VLO	110.750	HO	51°38'57.80"N 005°41'15.89"E		
GP 24R		330.050	HO	51°39'46.53"N 005°43'12.18"E		
DME 06L	VLZ	CH 44Y	HO	51°39'04.57"N 005°41'45.19"E		
ILS 06L LOCALIZER	VLZ	110.750	HO	51°39'53.89"N 005°43'39.91"E		
GP 06L		330.050	HO	51°39'04.57"N 005°41'45.19"E		
TACAN	VKL	CH 20X	H24	51°39'19.55"N 005°42'25.12"E	200 NM/60000 ft	FREQ pro- tected

EHVK AD 2.20 Local traffic regulations

Glider- and Light ACFT flying

Gliderflying outside OPR HR SR/SS.

EHVK AD 2.21 Noise abatement procedures

Noise abatement procedures are included in the flight procedures.

EHVK AD 2.22 Flight procedures

IFR procedures

The IAP and SID procedures are established in accordance STANAG 3759 and AATCP-1.

VFR Departure procedures

JET AIRCRAFT.

Runway 24: Leaving procedures are standard to the north. Standard leaving altitude is 2000 ft AMSL. Stay clear of the village of Volkel. Turn to the north-west and proceed between Uden and Veghel. Leaving procedures following a route between Airbase Volkel and Uden is prohibited.

Runway 06: Leaving procedures are standard to the North. Standard leaving altitude is 2000 ft AMSL. Do not turn to the north before 1,5 DME TACAN. Stay clear of the villages of Zeeland and Mill.

Note: Deviation from the above mentioned procedures i.e. leaving direction or altitude only after permission from TWR.

HELICOPTERS.

As directed by TWR.

CONVENTIONAL AIRCRAFT.

As directed by TWR.

VFR ARRIVAL PROCEDURES

JET AIRCRAFT.

Overhead Pattern: Initial points (IP) are approximately 3 NM from threshold, just north of the extended centerlines. IP's shall be joined from the north at 2500 ft AMSL. Joining from the south only after permission from TWR. IP shall be joined at 2000 ft AMSL. The break shall be executed to the south: a left-hand break for runway 24, a right-hand break for runway 06, at 1500 ft AMSL.

Closed-pattern: Rejoining downwind only after permission from TWR. Aircraft shall not exceed 1000 ft AMSL until clear of airfield boundaries, in order to stay clear of traffic on the break. Aircraft shall proceed to the end of the runway before turning to downwind in order to avoid Odiliapeel.

Straight-in approaches: Only allowed after permission from TWR. Aircraft shall report 8 NM final (Cuijk or Veghel) at 1500 ft AMSL.

HELICOPTERS.

Standard helicopter approach is from the north at 500 ft AMSL. Populated areas shall be avoided. For landing the helicopter square shall be used or as directed by TWR.

CONVENTIONAL ACFT.

Conventional Pattern: Conventional traffic should join from the north at 1000 ft AMSL. Downwind is on the north side of the runway or as directed by TWR.

Straight-in approaches: Only allowed after permission from Volkel TWR. Aircraft shall report 8 NM final (CUIJK or VEGHEL) at 1500 ft AMSL.

WARNING

Avoid Reek Area (EHD 62)(demolition of explosives) position
51°43'42.00"N 005°41'33.00"E, radius 1 NM altitude 1000 ft AMSL.
See also AIP Netherlands ENR 5.6 .

EHVK AD 2.23 Additional information

AIS Briefing office facility and the ATS Reporting Office (ARO) is only available through the Flight Data

and Notam Office (FDNO) located at AOCS Nieuw Milligen.

Tel: +31(0)577 458336/8781

Fax: +31(0)577 456523

E-mail: aocs.fdno@mindef.nl

AFTN: EHMCZPZX

avlbl H24

PPR 24 HRS: for Prior Permission Request contact:

Operational and Co-ordination Centre

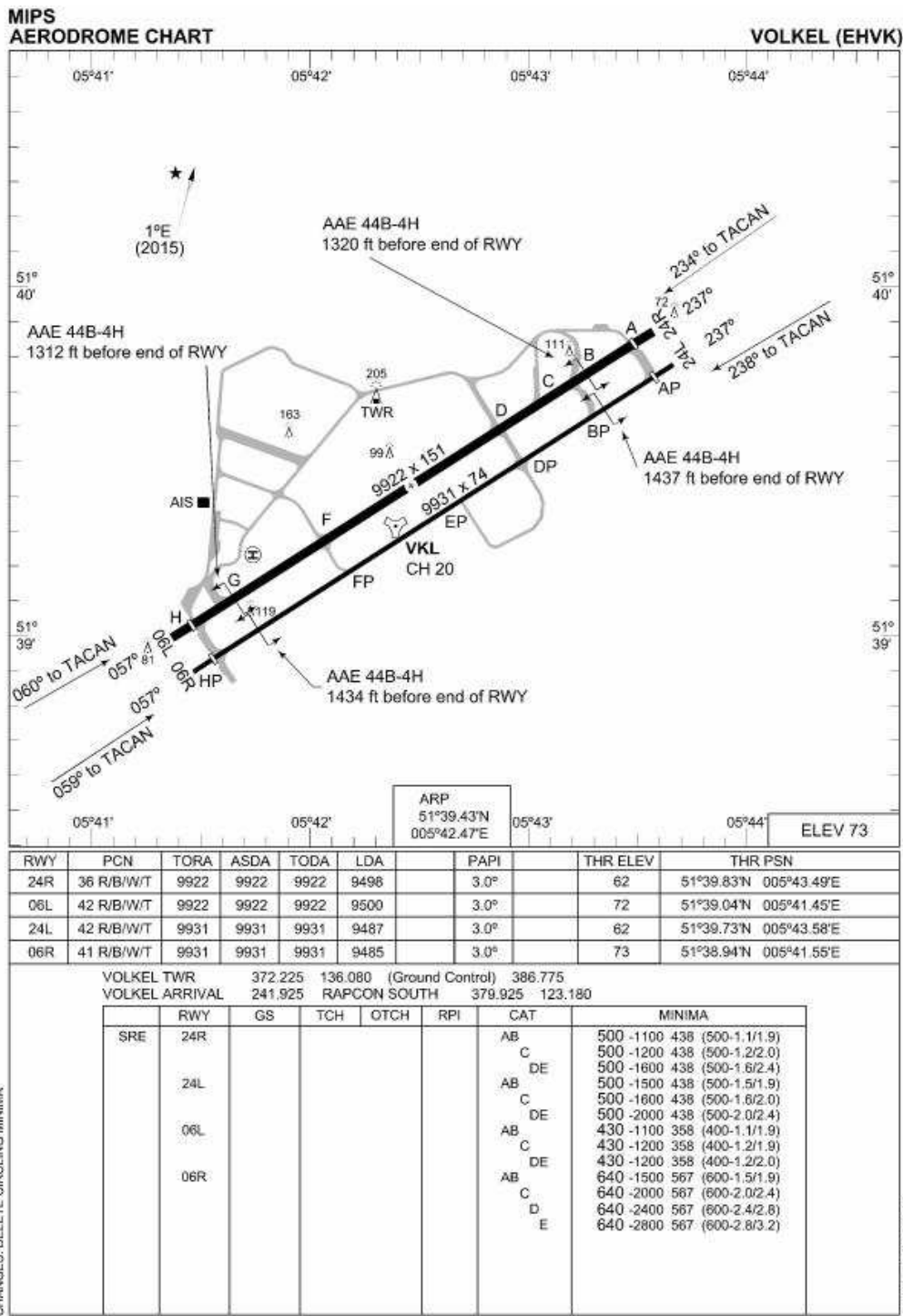
Tel: +31(0) 413 - 27 8001/8002

Fax: +31(0) 413 - 27 6558

E-mail: vkl.oc.ops@mindef.nl

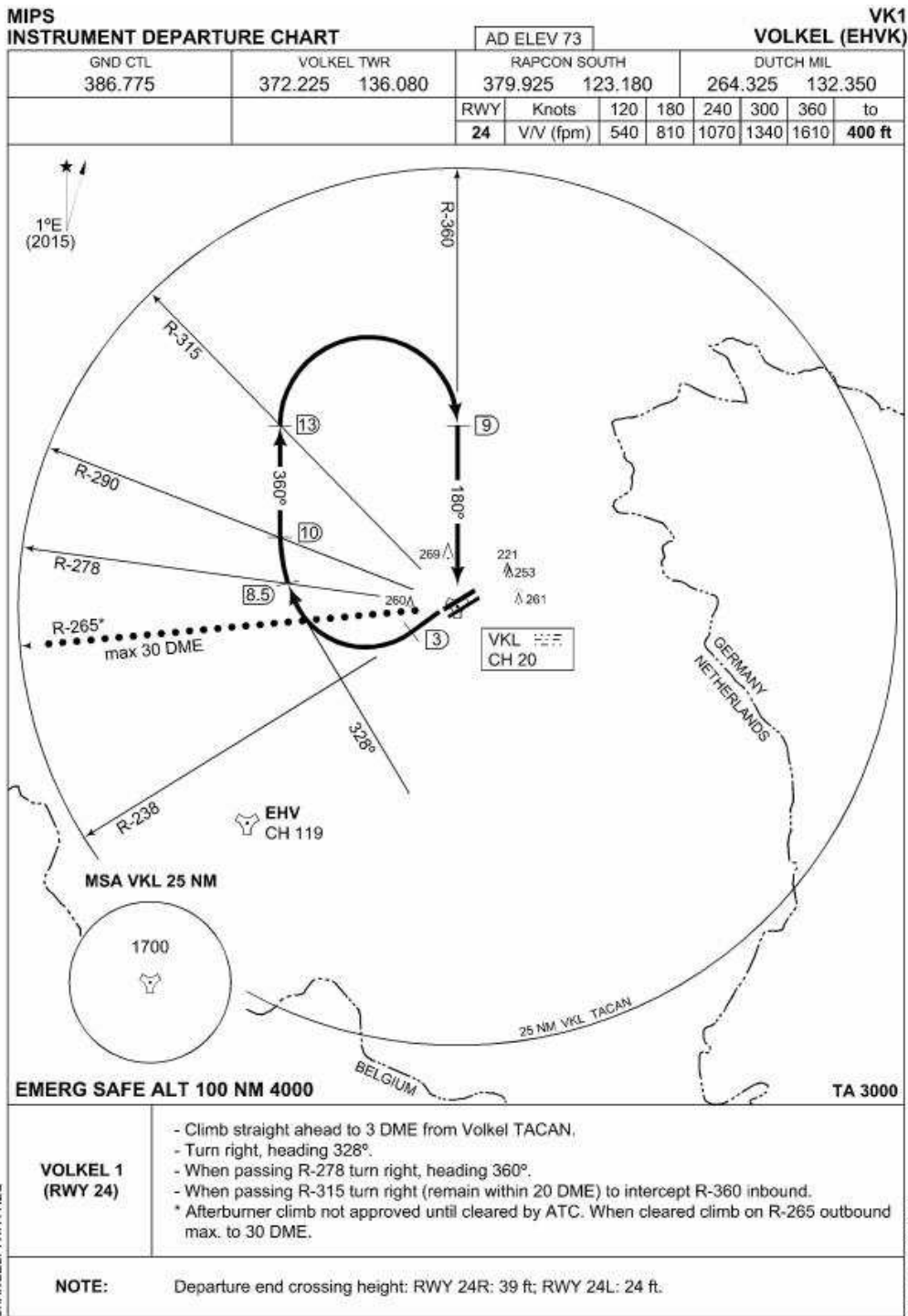
EHVK AD 2.24 Charts related to an aerodrome

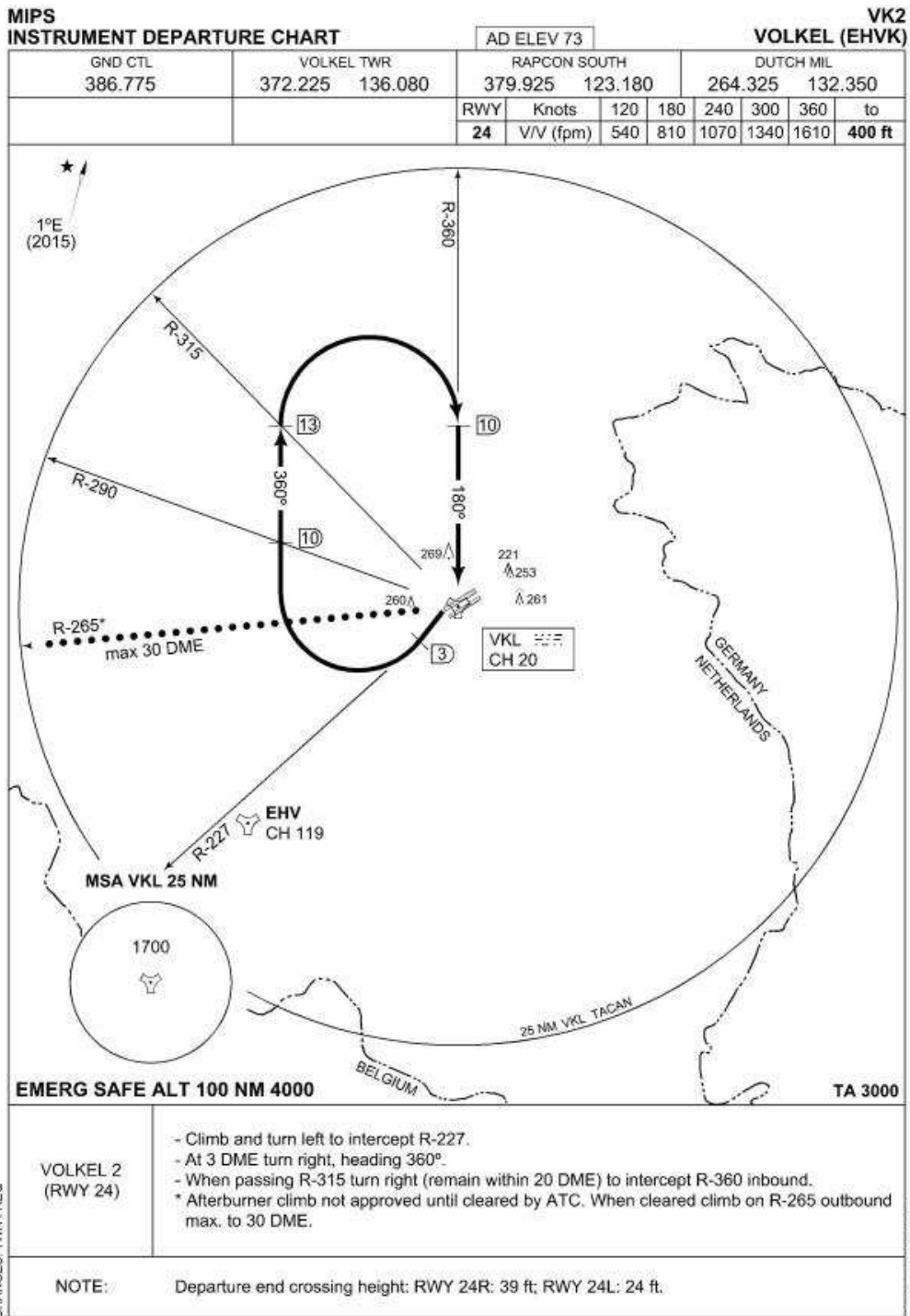
Aerodrome Chart	EHVK AD 2-9
Local map	EHVK AD 2-10
Instrument departure chart VK1	EHVK AD 2-11
Instrument departure chart VK2	EHVK AD 2-12
Instrument departure chart VK3	EHVK AD 2-13
Instrument departure chart VK5	EHVK AD 2-14
Instrument departure chart VK6	EHVK AD 2-15
Instrument departure chart VK7	EHVK AD 2-16
Instrument approach chart ILS/DME or LOC RWY 06L	EHVK AD 2-17
Instrument approach chart TACAN RWY 06L/06R	EHVK AD 2-18
Instrument approach chart ILS/DME or LOC RWY 24R	EHVK AD 2-19
Instrument approach chart TACAN RWY 24R/24L	EHVK AD 2-20

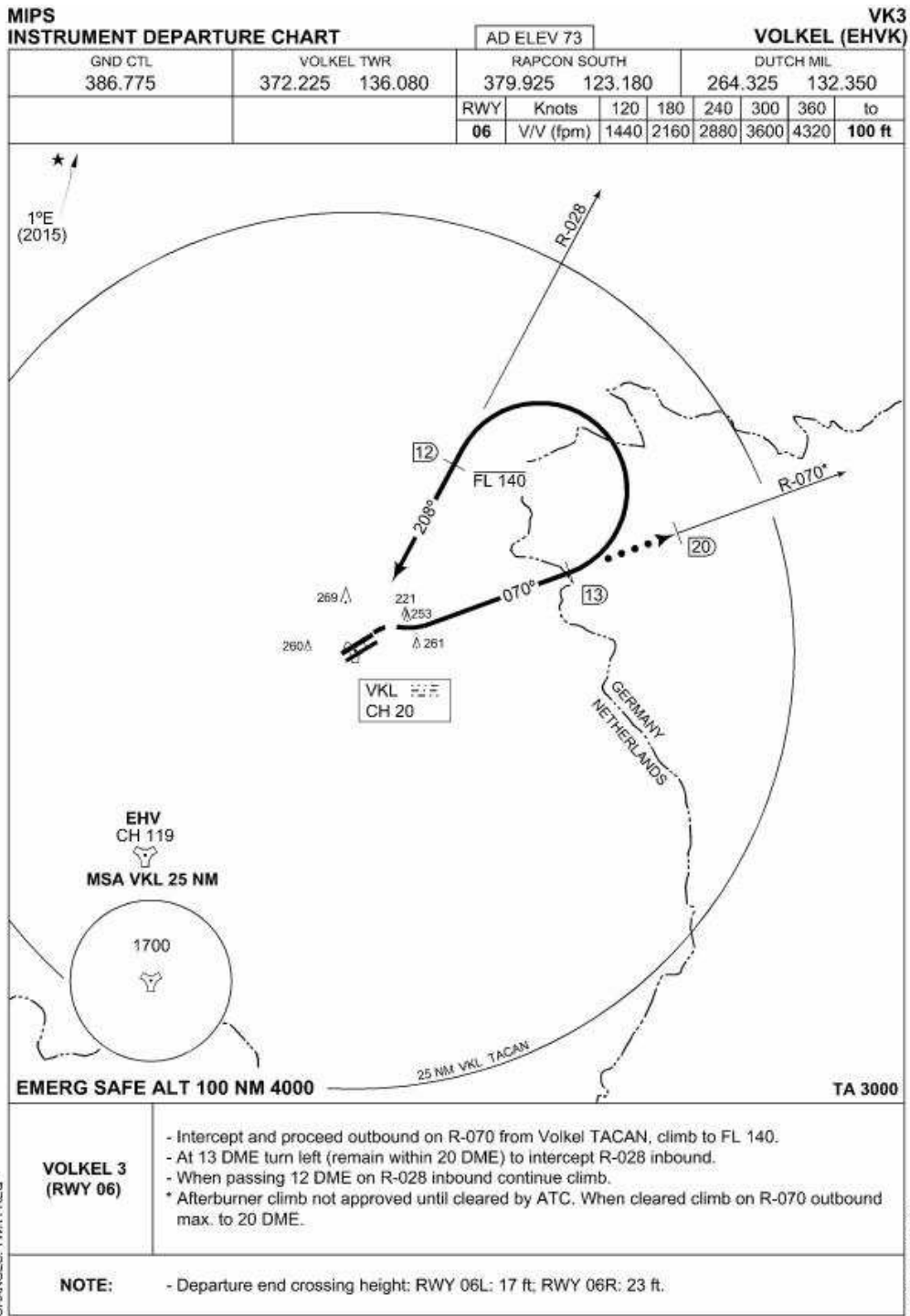


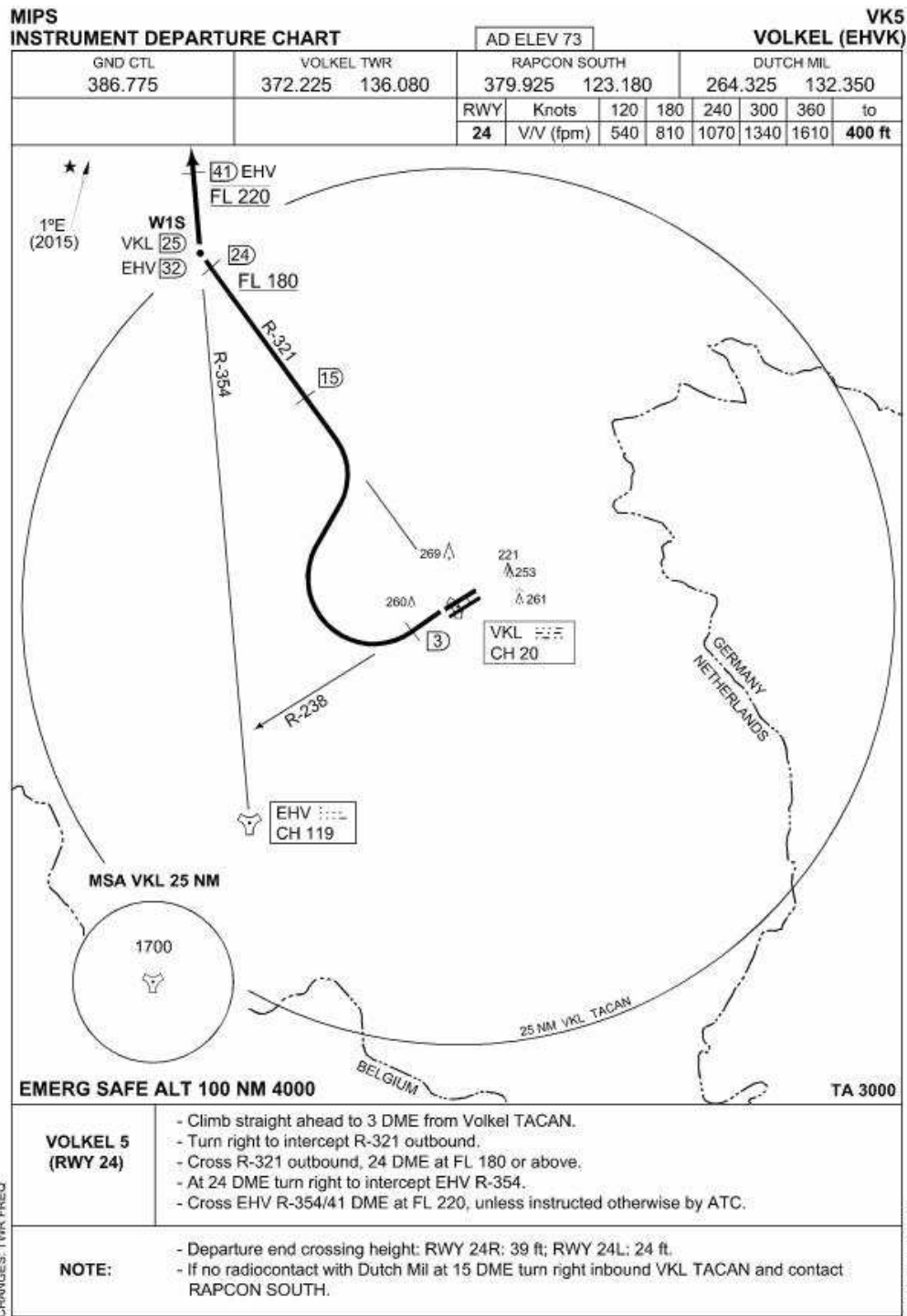
LOCAL MAP

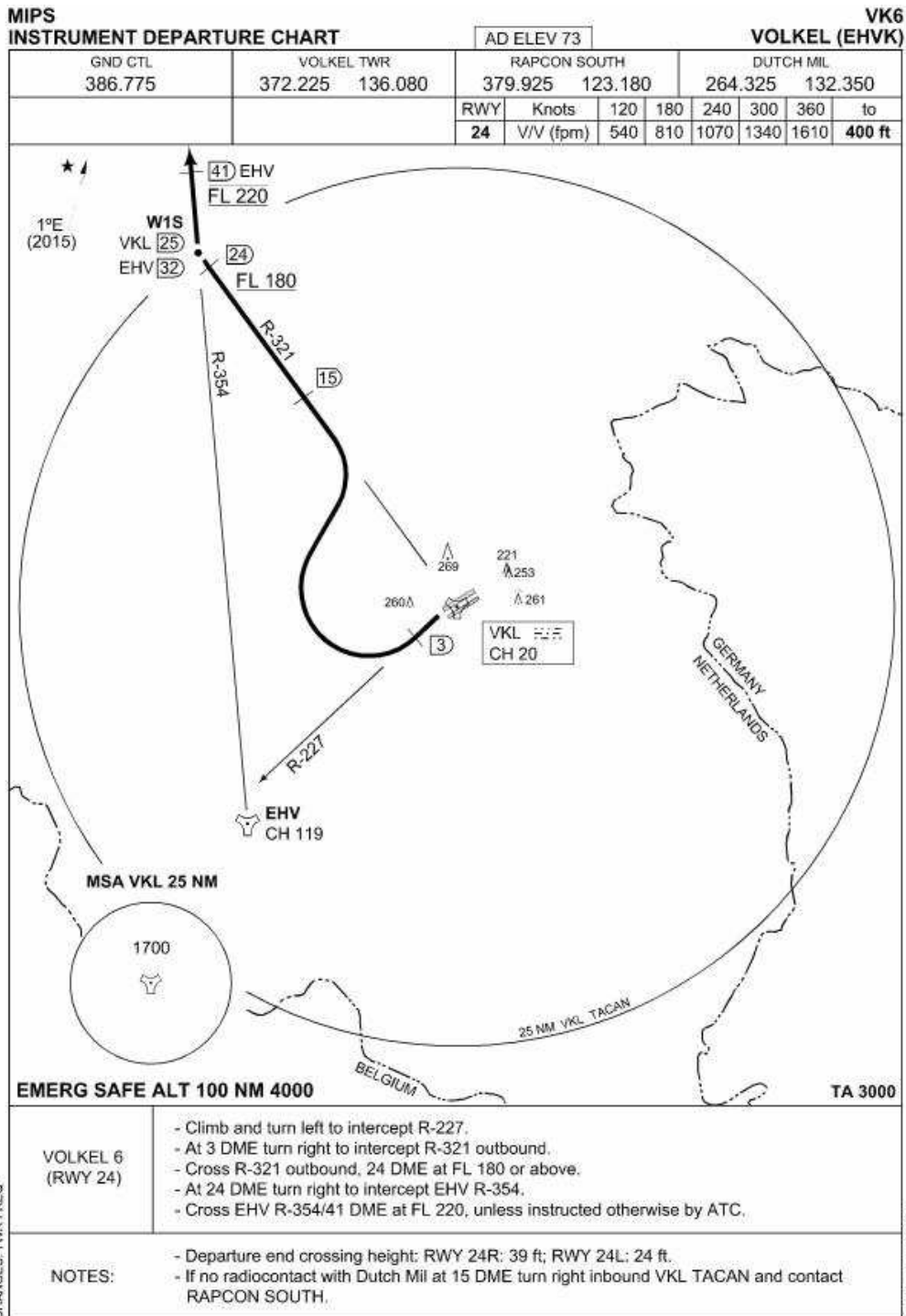


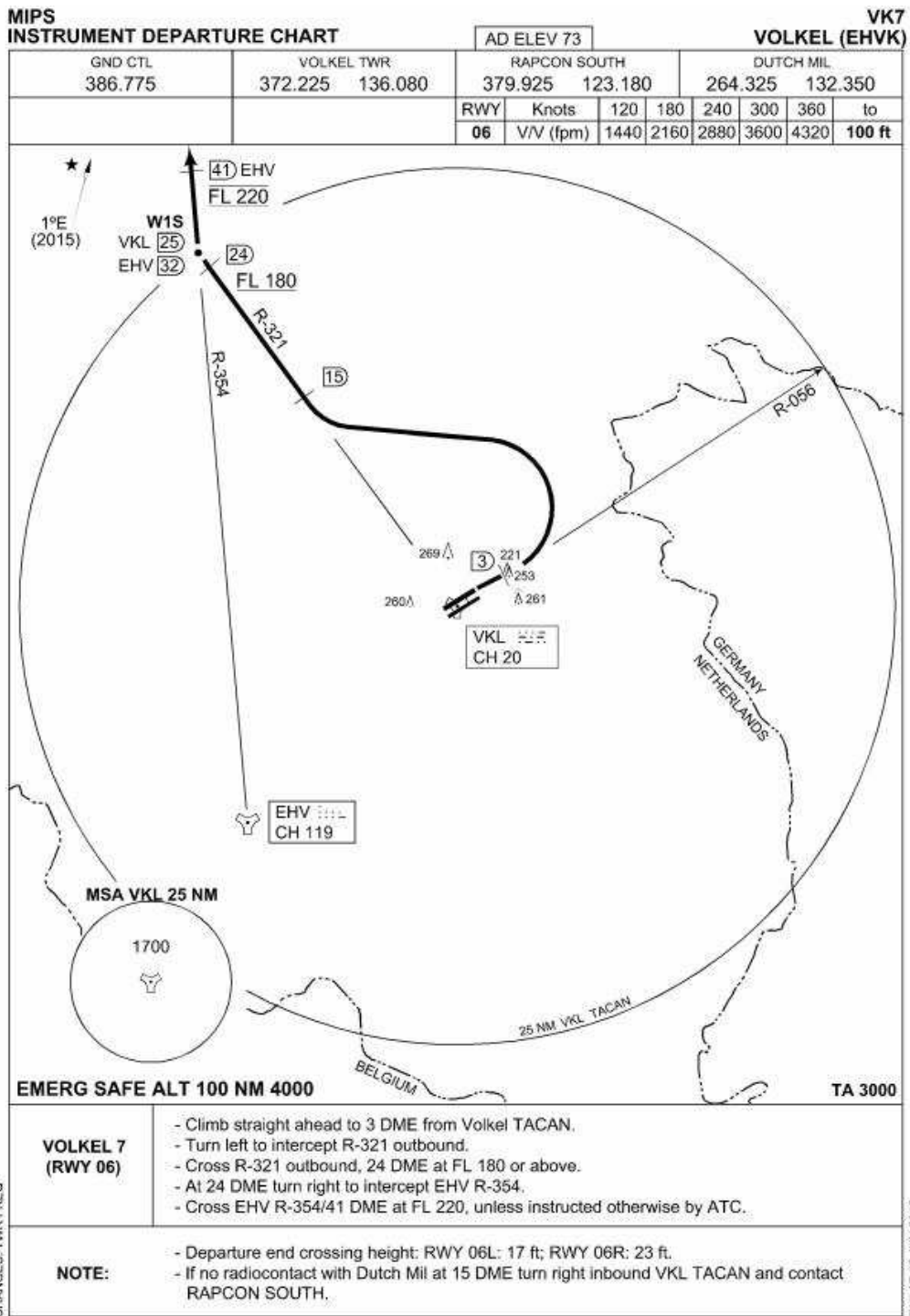




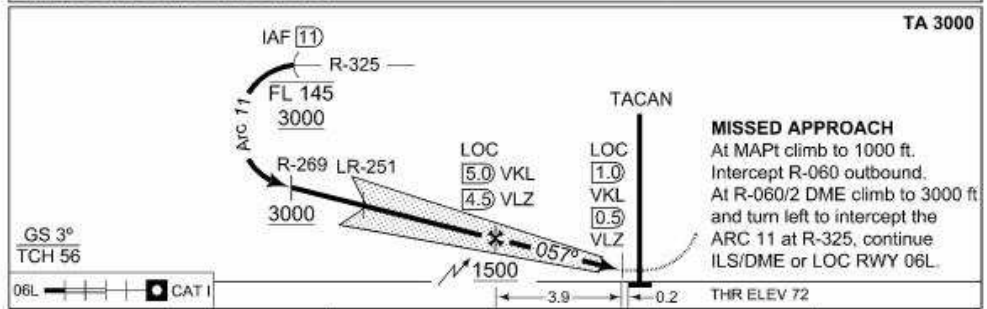
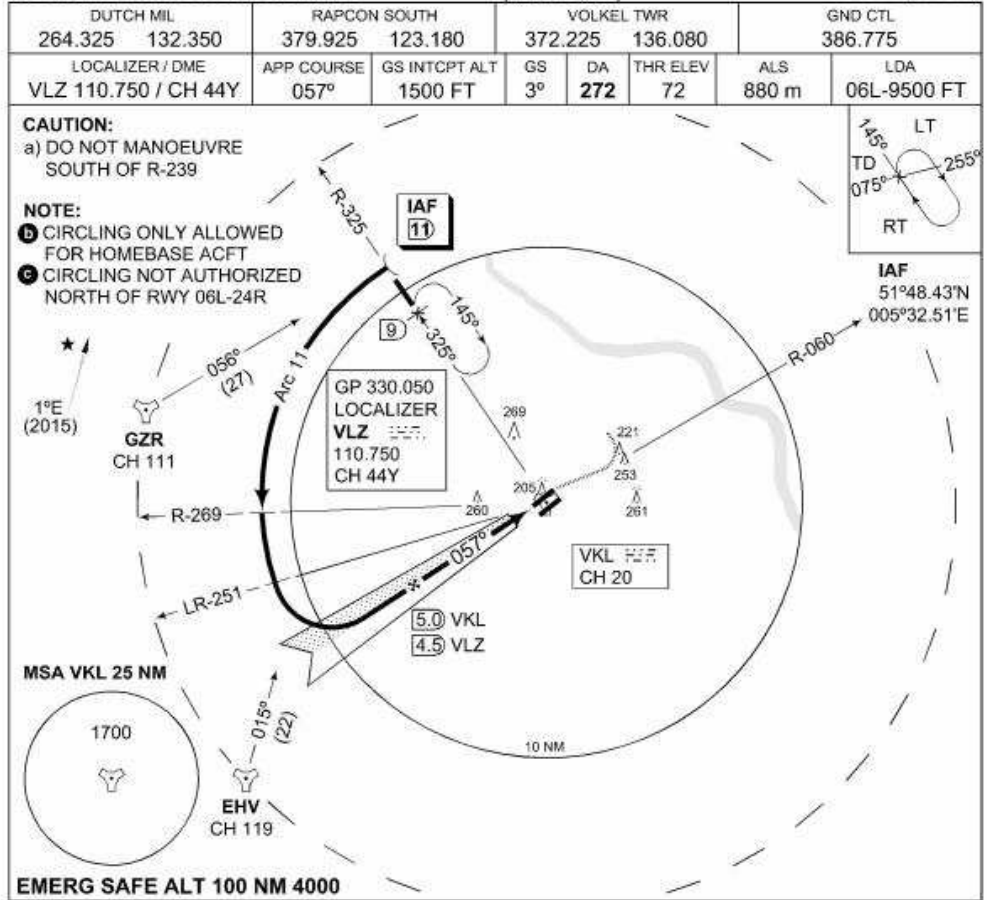




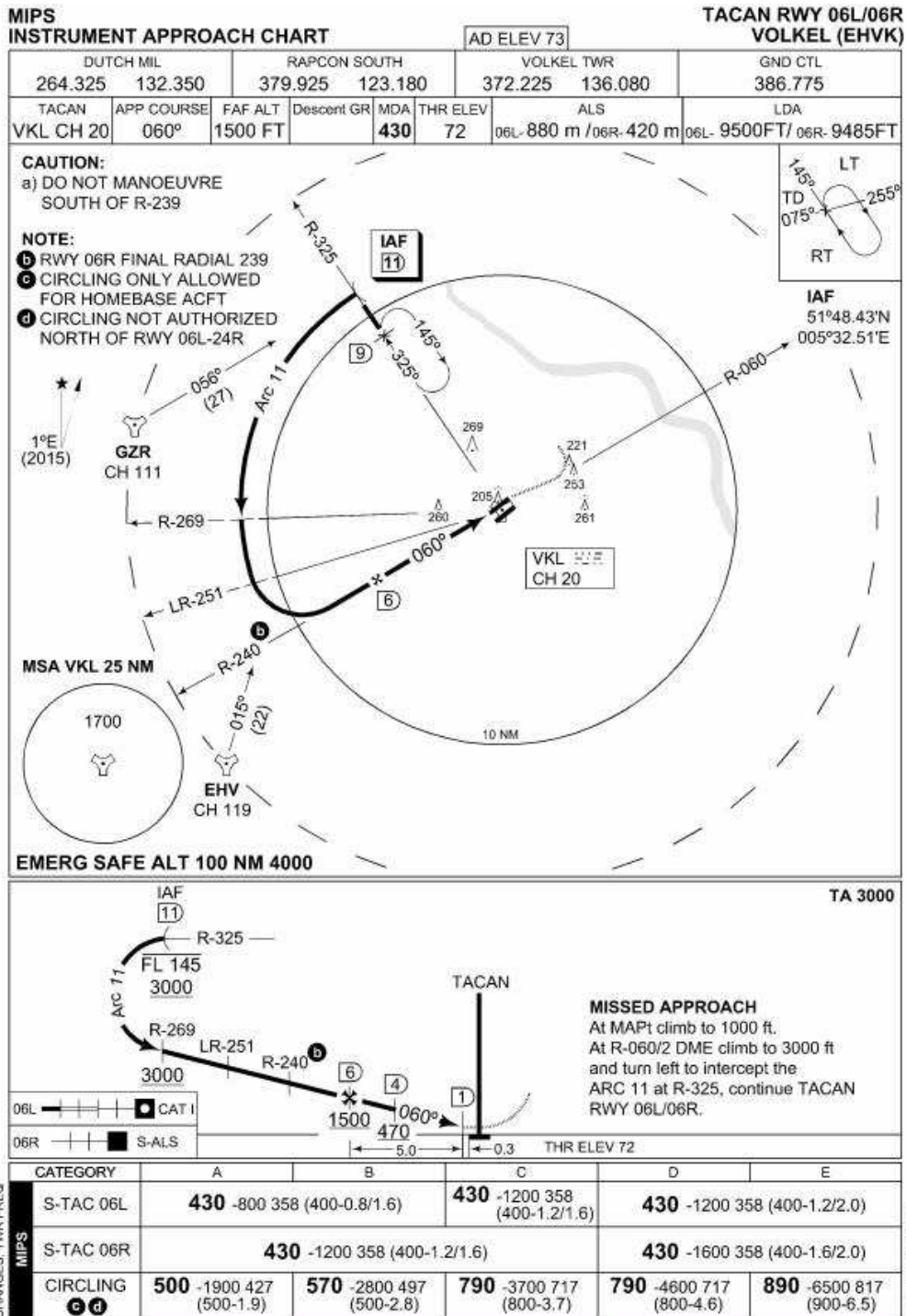




MIPS INSTRUMENT APPROACH CHART **ILS/DME or LOC RWY 06L VOLKEL (EHVK)**



CATEGORY	A	B	C	D	E
S-ILS 06L	272 -800 200 (200-0.8/1.6)				
S-LOC 06L	370 -800 298 (300-0.8/1.6)	370 -1200 298 (300-1.2/1.6)			
CIRCLING b c	500 -1900 427 (500-1.9)	570 -2800 497 (500-2.8)	790 -3700 717 (800-3.7)	790 -4600 717 (800-4.6)	890 -6500 817 (900-6.5)



MIPS INSTRUMENT APPROACH CHART **ILS/DME or LOC RWY 24R VOLKEL (EHVK)**

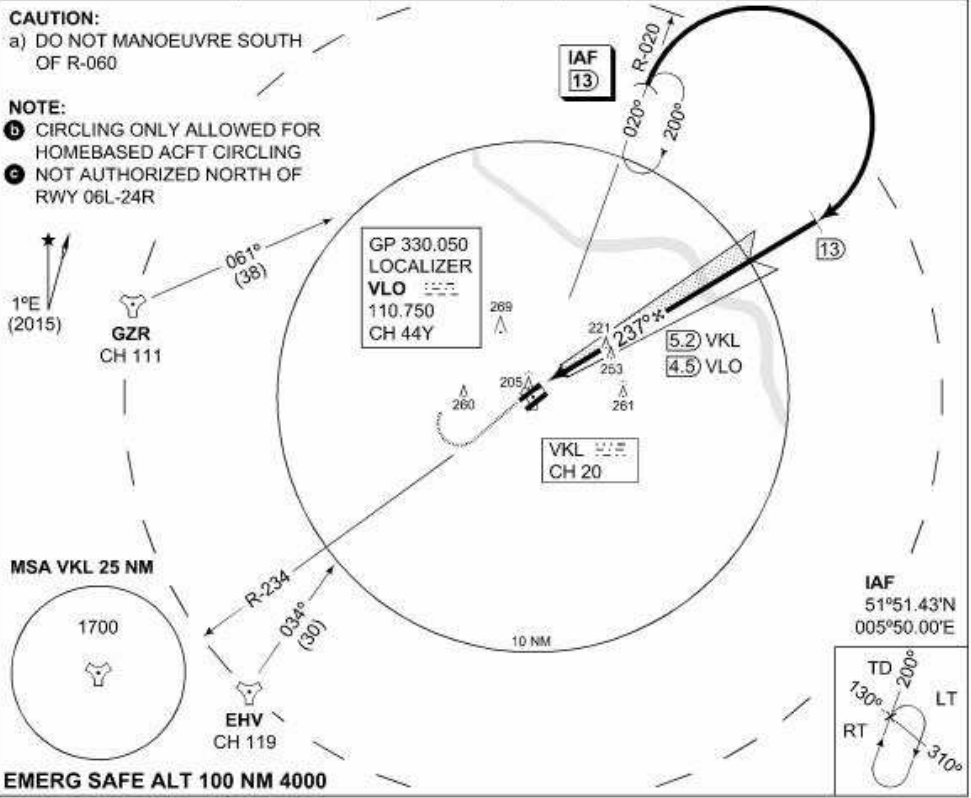
DUTCH MIL 264.325 132.350		RAPCON SOUTH 379.925 123.180		VOLKEL TWR 372.225 136.080		GND CTL 386.775	
LOCALIZER / DME VLO 110.750 / CH 44Y		APP COURSE 237°	GS INTCP ALT 1500 FT	GS 3°	DA 262	THR ELEV 62	ALS 852 m
							LDA 24R-9498 FT

CAUTION:

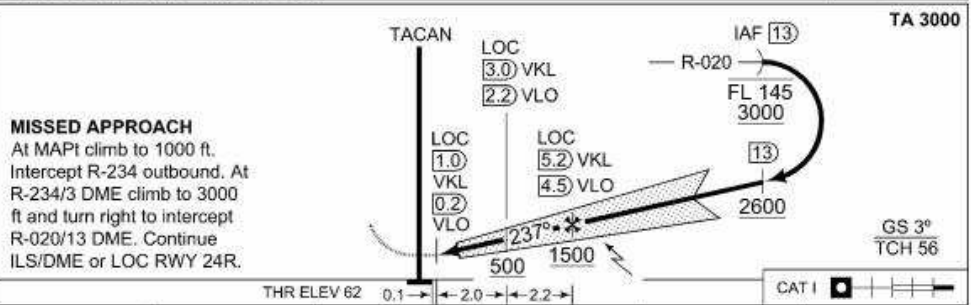
a) DO NOT MANOEUVRE SOUTH OF R-060

NOTE:

- b** CIRCLING ONLY ALLOWED FOR HOMEBASED ACFT CIRCLING
- c** NOT AUTHORIZED NORTH OF RWY 06L-24R



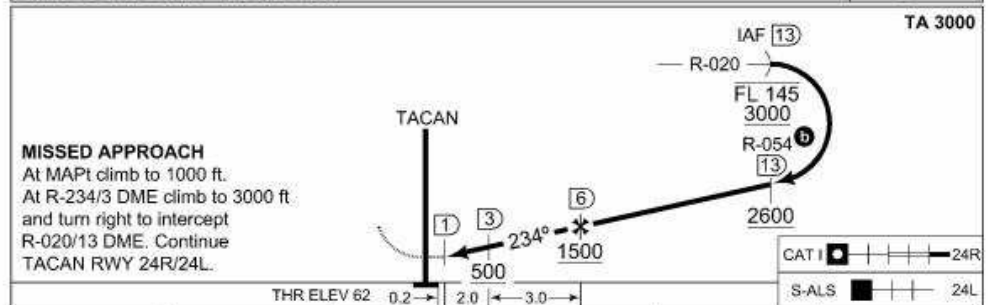
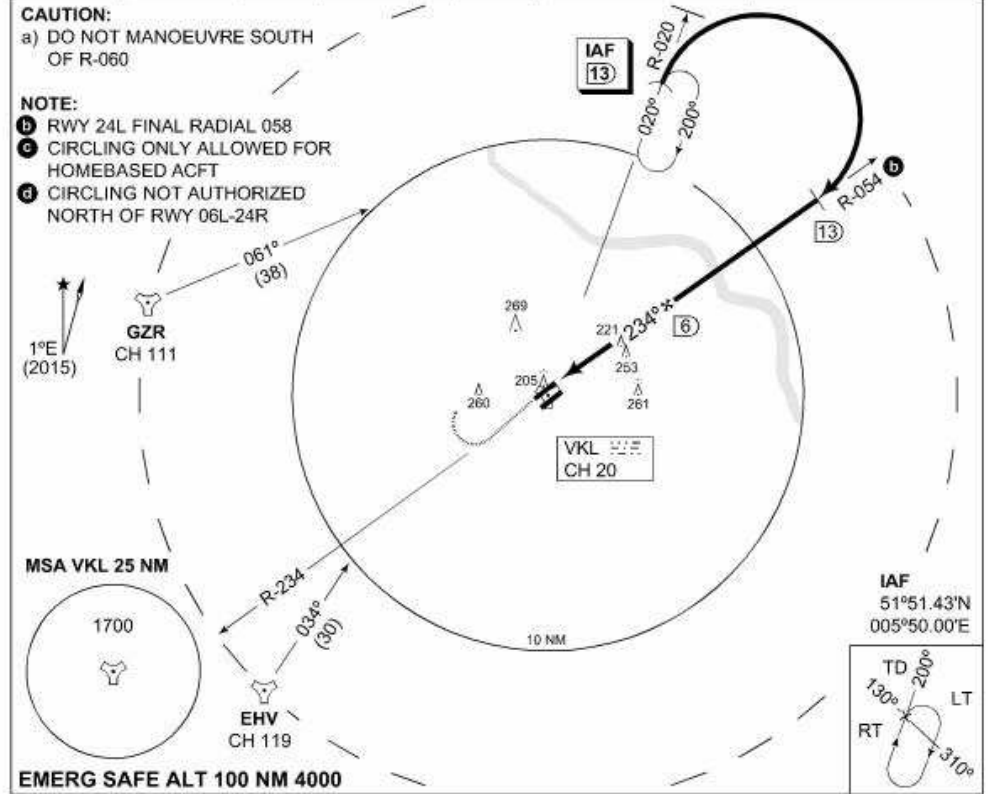
EMERG SAFE ALT 100 NM 4000



	CATEGORY	A	B	C	D	E
CHANGES: TVR FREQ MIPS	S-ILS 24R	262 -800 200 (200-0.8/1.6)				
	S-LOC 24R	430 -800 368 (400-0.8/1.6)		430 -1200 368 (400-1.2/1.6)	430 -1200 368 (400-1.2/2.0)	
	CIRCLING b c	500 -1900 427 (500-1.9)	570 -2800 497 (500-2.8)	790 -3700 717 (800-3.7)	790 -4600 717 (800-4.6)	890 -6500 817 (900-6.5)

MIPS INSTRUMENT APPROACH CHART **TACAN RWY 24R/24L VOLKEL (EHVK)**

DUTCH MIL 264.325 132.350		RAPCON SOUTH 379.925 123.180		VOLKEL TWR 372.225 136.080		GND CTL 386.775	
TACAN VKL CH 20	APP COURSE 234°	FAF ALT 1500 FT	Descent GR	MDA 430	THR ELEV 62	ALS 24R-852 m / 24L-423 m	LDA 24R-9498FT/24L-9487FT



CATEGORY	A		B		C		D		E			
	THR ELEV 62	0.2	2.0	3.0	THR ELEV 62	0.2	2.0	3.0	THR ELEV 62	0.2	2.0	3.0
S-TACAN 24R	430	-800 368 (400-0.8/1.6)	430	-1200 368 (400-1.2/1.6)	430	-1200 368 (400-1.2/2.0)	430	-1200 368 (400-1.2/2.0)	430	-1600 368 (400-1.6/2.0)	430	-1600 368 (400-1.6/2.0)
S-TACAN 24L	430	-1200 368 (400-1.2/1.6)	430	-1200 368 (400-1.2/1.6)	430	-1600 368 (400-1.6/2.0)	430	-1600 368 (400-1.6/2.0)	430	-1600 368 (400-1.6/2.0)	430	-1600 368 (400-1.6/2.0)
CIRCLING c d	500	-1900 427 (500-1.9)	570	-2800 497 (500-2.8)	790	-3700 717 (800-3.7)	790	-4600 717 (800-4.6)	790	-4600 717 (800-4.6)	890	-6500 817 (900-6.5)

CHANGES: TWR FREQ MIPS

RNLAF 25 JUN 2015