

## WOENS DRECHT

### EHWO AD 2.1 Aerodrome location indicator and name

EHWO - Woensdrecht

### EHWO AD 2.2 Geographical and administrative data

1	ARP	51°26'56.40"N 004°20'31.71"E
2	Direction and distance from city	150° MAG/3.5 NM BERGEN OP ZOOM
3	Elevation/Reference temperature	+ 63 ft AMSL/21.0° C (AUG)
4	MAG VAR/Annual change	0°38'E (JAN 2015)/9'E
5	AD operating authority Postal address  Visitors' address  Telephone E-mail AFTN	RNLAF Vliegbasis Woensdrecht MPC 91A P.O. Box 8762 4820 BB Breda Kooiweg 40 4631 SZ Hoogerheide +31(0)164 692365 kmsl.lvl@mindef.nl EHMCZPZX
6	Types of TFC permitted (IFR/VFR)	IFR/VFR
7	Remarks	Nil

### EHWO AD 2.3 Operational hours

1	AD OPR HR	MON/FRI 0800/1645 (local time)
2	Customs and immigration	1 HR PN
3	Health and sanitation	HO
4	AIS Briefing office	See 2.23
5	ATS Reporting Office (ARO)	See 2.23
6	MET Briefing Office	HO
7	ATS	HO
8	Fuelling	HO
9	Handling	Limited, check Airfield Manager for status +31(0)164 692765
10	Security	HO
11	De-icing	Limited, check Airfield Manager for status +31(0)164 692765
12	Remarks	PPR 24 HRS See AD 2.23

### EHWO AD 2.4 Handling services and facilities

1	Cargo-handling facilities	No
2	Fuel/oil types	F-34
3	Fuelling facilities/capacity	O/R
4	Oxygen	LOX
5	De-icing facilities/type	Limited, check Base-Ops for status
6	Starting units	DSA 150, DSA 600
7	Hangar space for visiting ACFT	No
8	Repair facilities	No
9	Remarks	Nil

### EHWO AD 2.5 Passenger facilities

1	Remain overnight	AVBL O/R
2	Medical facilities	Medical officer, ambulance
3	Remarks	Nil

### EHWO AD 2.6 Rescue and fire fighting services

1	AD category for fire fighting	NATO CAT 7
2	Remarks	Nil

### EHWO AD 2.7 Seasonal availability - clearing

1	Seasonal availability	All seasons
2	Snow removal equipment	Yes
3	Remarks	Nil

### EHWO AD 2.8 Aprons, taxiways and check locations/positions data

1	Apron surface and strength	Concrete, PCN: 77 R/C/W/T
2	TWY width, surface and strength	Width 48 ft, tarmac/concrete, PCN: 51 R/C/W/T
3	Remarks	TWY B north: width 36.27 ft, tarmac, PCN; 10 F/A/W/T only to be used by ACFT with ACN 10 or less

### EHWO AD 2.9 Surface movement guidance and control system and markings

According STANAG 3158		
1	Remarks	Nil

### EHWO AD 2.10 Aerodrome obstacles

See Aerodrome Chart		
---------------------	--	--

### EHWO AD 2.11 Meteorological information provided

1	Associated MET Office	Woensdrecht / Joint MET Group
2	Hours of service MET Office outside hours	HO Joint MET Group
3	Office responsible for TAF preparation Periods of validity	Woensdrecht 9 HRS
4	Type of landing forecast Interval of issuance	Colourstate trend Hourly
5	Flight documentation Language(s) used	Charts, abbreviated plain language text English/Dutch
6	Charts and other information AVBL for briefing or consultation	SWC, prognostic upper air chart, radar satellite images
7	Supplementary equipment AVBL for pro- viding information	Telefax: +31(0)164 692540
8	Remarks	Tel. Woensdrecht: +31(0)164 692268 (obs) Tel. Joint MET Group: +31(0)164 693111

### EHWO AD 2.12 Runway physical characteristics

1	RWY dimensions/a-gear	See Aerodrome Chart. Values in ft.
2	RWY surface	Tarmac/concrete
3	RWY strength	PCN: 51 R/C/W/T

### EHWO AD 2.13 Declared distances

See Aerodrome Chart. Values in ft.
------------------------------------

### EHWO AD 2.14 Approach and runway lighting

According STANAG 3316		
1	Approach lighting	RWY 25: CAT I. 900 m RWY 07: Nil
2	RWY lighting	RWY 07 VHI, RWY 25 VCL/VHI
3	PAPI	Situated on left side of both RWYs
4	Remarks	Nil

### EHWO AD 2.15 Other lighting, secondary power supply

1	LDI	Not lighted
2	TWY edge lighting	AVBL
3	Emergency RWY lighting	Moskit type 2 (according STANAG 3534)
4	Emergency TWY edge lighting	Retroreflective markers
5	Secondary power supply/switch-over	AVBL, switch over time 15 seconds
6	Remarks	Nil

### EHWO AD 2.16 Helicopter landing area

1	Location	51°26'46.52"N 004°20'15.47"E and 600 m south of TWR. See Aerodrome Chart
2	Marking	Daylight marking
3	Lighting	No
4	Remarks	Nil

### EHWO AD 2.17 Air traffic services airspace

1	Designation and lateral limits	Woensdrecht control zone 51°20'19.14"N 004°13'22.74"E; along clockwise arc (radius 8 NM, centre 51°26'56.40"N 004°20'31.71"E) to 51°25'38.09"N 004°33'08.47"E; along Dutch-Belgian border to point of origin.
2	Vertical limits	GND to 3000 ft AMSL
3	Airspace classification	D
4	ATS unit call sign Language(s)	Contact initially Woensdrecht TWR, outside HO Dutch Mil Info English FREQ 132.350 MHz.
5	Transition altitude	IFR: 3000 ft AMSL; VFR: 3500 ft AMSL
6	Remarks	Nil

### EHWO AD 2.18 Air traffic services communication facilities

STATION/ SERVICE	CALL SIGN OR IDENTIFICATION	FREQUENCY MHz	HOURS	REMARKS
1	2	3	4	5
	As appropriate	121.500 243.000	HO	Emergency FREQ for all services
TWR	Woensdrecht Tower	120.430*) 122.100 339.000*) 257.800	HO	*) Primary FREQ Outside HO contact Dutch Mil Info 132.350 MHz  AD
GND CTL	Woensdrecht Ground	121.680 283.125	HO	
VDF	Woensdrecht Tower	120.430*) 121.500	HO	
APP	Rapcon West	123.580 281.475	HO	Radar equipped
	Woensdrecht Arrival	123.580 378.650	HO	Through APP
	Woensdrecht Monitor	134.480	HO	Nieuw Milligen TMA D1, TMA G1 (extended) Walcheren Area

## EHWO AD 2.19 Radio navigation and landing aids

FACILITY	ID	CHANNEL FREQ.	HOURS	CO-ORD.	RANGE/ ALTITUDE	REMARKS
1	2	3	4	5	6	7
TACAN	WDT	CH 97X	H24	51°26'50.64"N 004°20'38.13"E	40 NM/25000 ft	FREQ protected
ILS 25 LOCALIZER	WDO	108.150	H24	51°26'40.78"N 004°19'25.34"E		
ILS 07 LOCALIZER	WDZ	108.150	H24	51°27'13.50"N 004°21'44.40"E		
GLIDEPATH		334.550				
DME		CH 18Y	H24			
VDF Woensdrecht Tower		120.425*) 121.500	HO			

## EHWO AD 2.20 Local traffic regulations

### Glider- and Light ACFT flying

Glider- and modelflying outside OPR HR SR/SS.

## EHWO AD 2.21 Noise abatement procedures

To be developed.

## EHWO AD 2.22 Flight procedures

### IFR procedures

The IAP and SID procedures are established in accordance STANAG 3759 and AATCP-1.

### VFR procedures

#### APPROACH PROCEDURES:

Both circuits are to be flown to the north, R/H pattern for RWY 25 and L/H pattern for RWY 07. The part of the approach in the CTR towards IP shall be flown at 2000 ft. After passing IP descend to 1500 ft circuit altitude.

Overhead pattern:  
1500 ft.

Rectangular pattern:  
1000 ft.

IP RWY 07:  
Complex of bridges over the Kreekrak (R-257, 4.3 NM).

IP RWY 25:  
Farm located west of the railway between Nispen and Essen (R-072, 3.3 NM).

HEL pattern:

500 ft.

IP north for HEL: 'De Akker' exit of the highway A58 (R-027, 4.1 NM).

REPORTING POINTS:

Kilo: 51°25'39.00"N 004°08'00.00"E

Victor: 51°33'43.00"N 004°13'47.00"E

Romeo: 51°33'34.00"N 004°27'47.00"E

### **EHWO AD 2.23 Additional information**

AIS Briefing office facility and the ATS Reporting Office (ARO) is only available through the Flight Data and Notam Office (FDNO) located at AOCs Nieuw Milligen.

Tel: +31(0)577 458336/8781

Fax: +31(0)577 456523

E-mail: aocs.fdno@mindef.nl

AFTN: EHMCPZPX  
avbl H24

PPR 24 HRS:for Prior Permission Request contact:  
AIRFIELD MANAGER

TEL: +31(0)164-692765

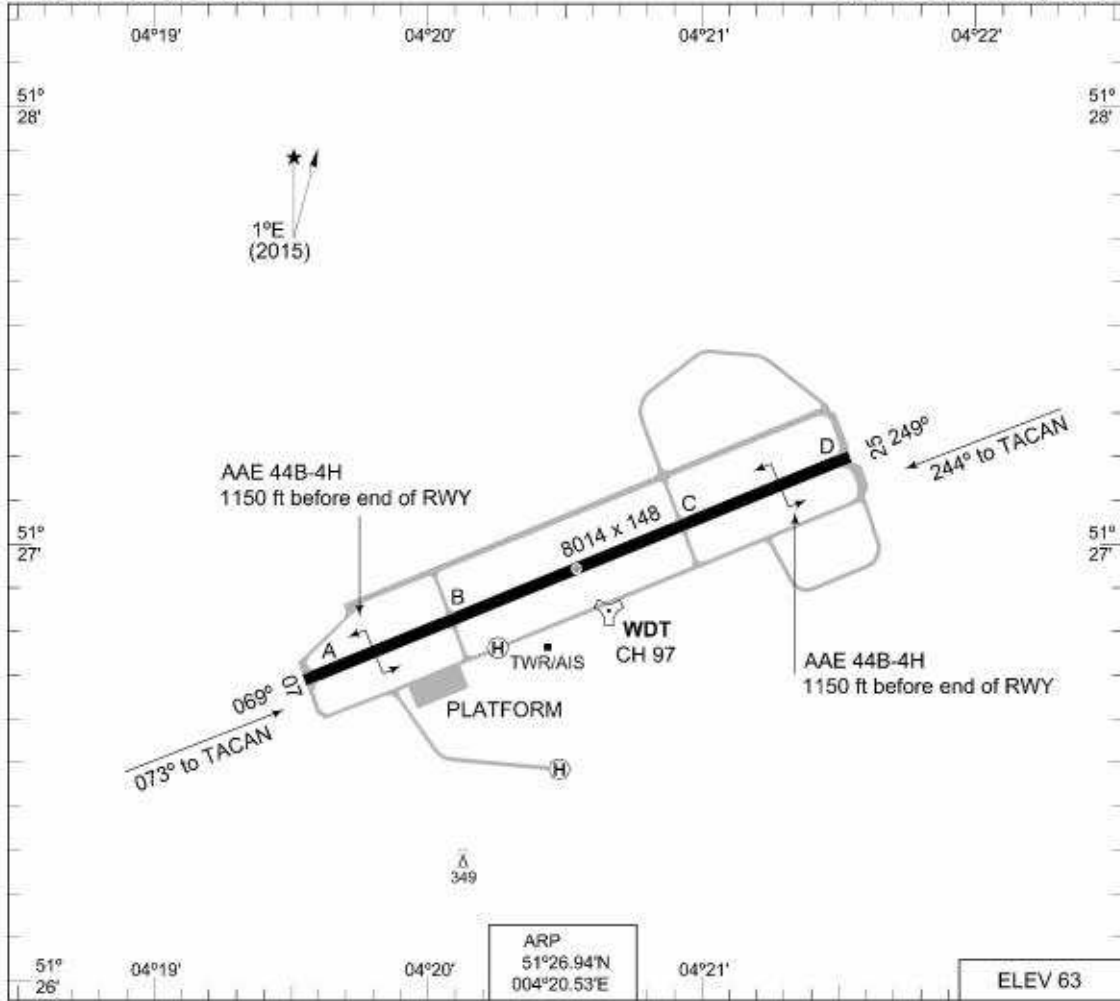
FAX: N.A.

EMAIL: LVL.KMSL@MINDEF.NL

### **EHWO AD 2.24 Charts related to an aerodrome**

Aerodrome Chart	EHWO AD 2-8
Local map	EHWO AD 2-9
Instrument departure chart WO1	EHWO AD 2-10
Instrument departure chart WO3	EHWO AD 2-11
Instrument approach chart TACAN ILS or LOC RWY 07	EHWO AD 2-12
Instrument approach chart HI-TACAN RWY 07	EHWO AD 2-13
Instrument approach chart TACAN RWY 07	EHWO AD 2-14
Instrument approach chart TACAN ILS or LOC RWY 25	EHWO AD 2-15
Instrument approach chart HI-TACAN RWY 25	EHWO AD 2-16
Instrument approach chart TACAN RWY 25	EHWO AD 2-17

**MIPS AERODROME CHART** **WOENS DRECHT (EHWO)**



RWY	PCN	TORA	ASDA	TODA	LDA	PAPI	TDZE	THR	PSN
25	51 R/C/W/T	8014	8014	8014	8014	3.0°	63	51°27.17'N	004°21.51'E
07	51 R/C/W/T	8014	8014	8014	8014		39	51°26.71'N	004°19.54'E

GROUND CONTROL 283.125 121.680  
 WOENS DRECHT TWR 339.000 120.430  
 RAPCON WEST 281.475 123.580  
 WOENS DRECHT ARRIVAL 378.650

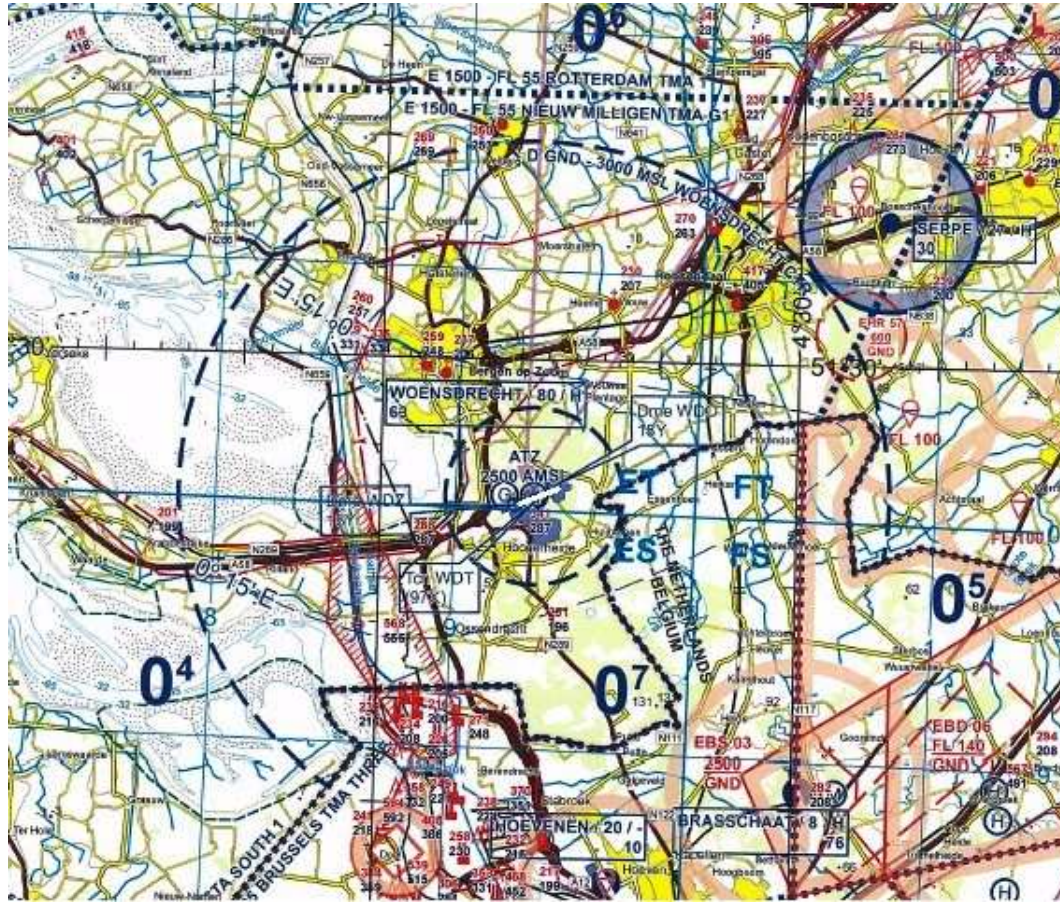
SRE	RWY	GS	TCH	OTCH	RPI	CAT	MINIMA
	25					AB	450 -1100 387 (400-1.1)
						CDE	450 -1200 387 (400-1.2)
						AB	600 -1900 561 (600-1.9)
						C	600 -2400 561 (600-2.4)
						D	600 -2800 561 (600-2.8)
	07					E	600 -3200 561 (600-3.2)

CHANGES: VAR

RNLAF 03 MAR 2016



LOCAL MAP

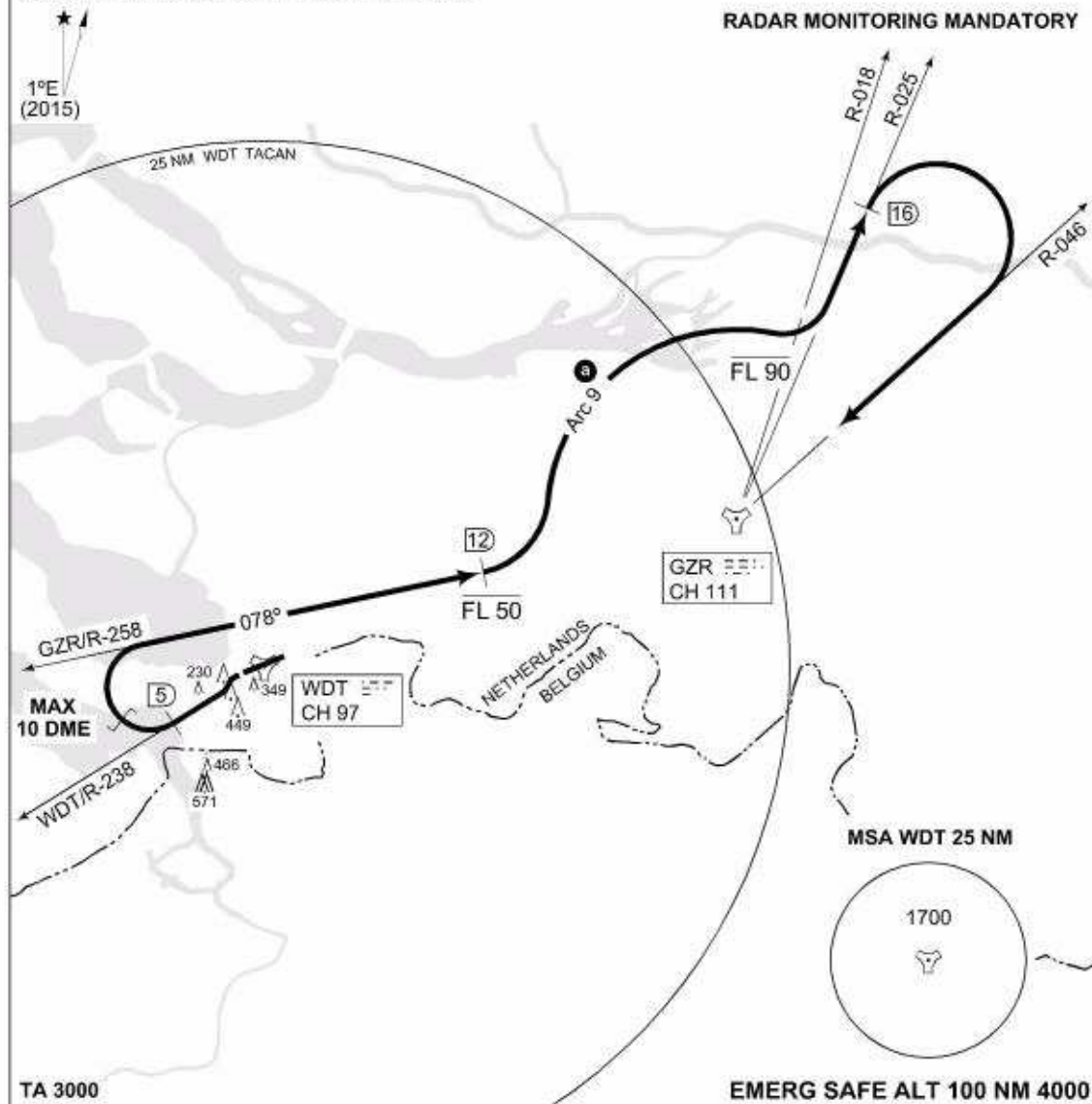


**TERPS INSTRUMENT DEPARTURE CHART** **WO1 WOENS DRECHT (EHWO)**

WOENS DRECHT TWR 339.000 120.430	RAPCON WEST 281.475 123.580	AD ELEV 63		DUTCH MIL 264.325 132.350		GND CTL 283.125 121.680			
		RWY	Knots	120	180	240	300	360	to
		25	V/V (fpm)	360	540	720	900	1080	114 ft

**NOTE:**

**a** WHEN IN ARC 9, DO NOT EXCEED 10 DME



CAUTION: Dep end crossing height 78 ft due to obstacle 230 ft right of centerline. TORA 8014.

**WOENS DRECHT 1 (RWY 25)**

- At 0.9 DME turn left and intercept R-238 outbound.
- At 5 DME turn right to intercept GZR R-258 inbound, level off at FL 50.
- At R-258/12 DME turn left to intercept Arc 9, climb to FL 90. **a**
- Intercept R-025 outbound, when crossing GZR R-018 continue climb.
- At 16 DME turn right to intercept R-046 inbound.

**NOTE:** Departure will be controlled by Rapcon West.

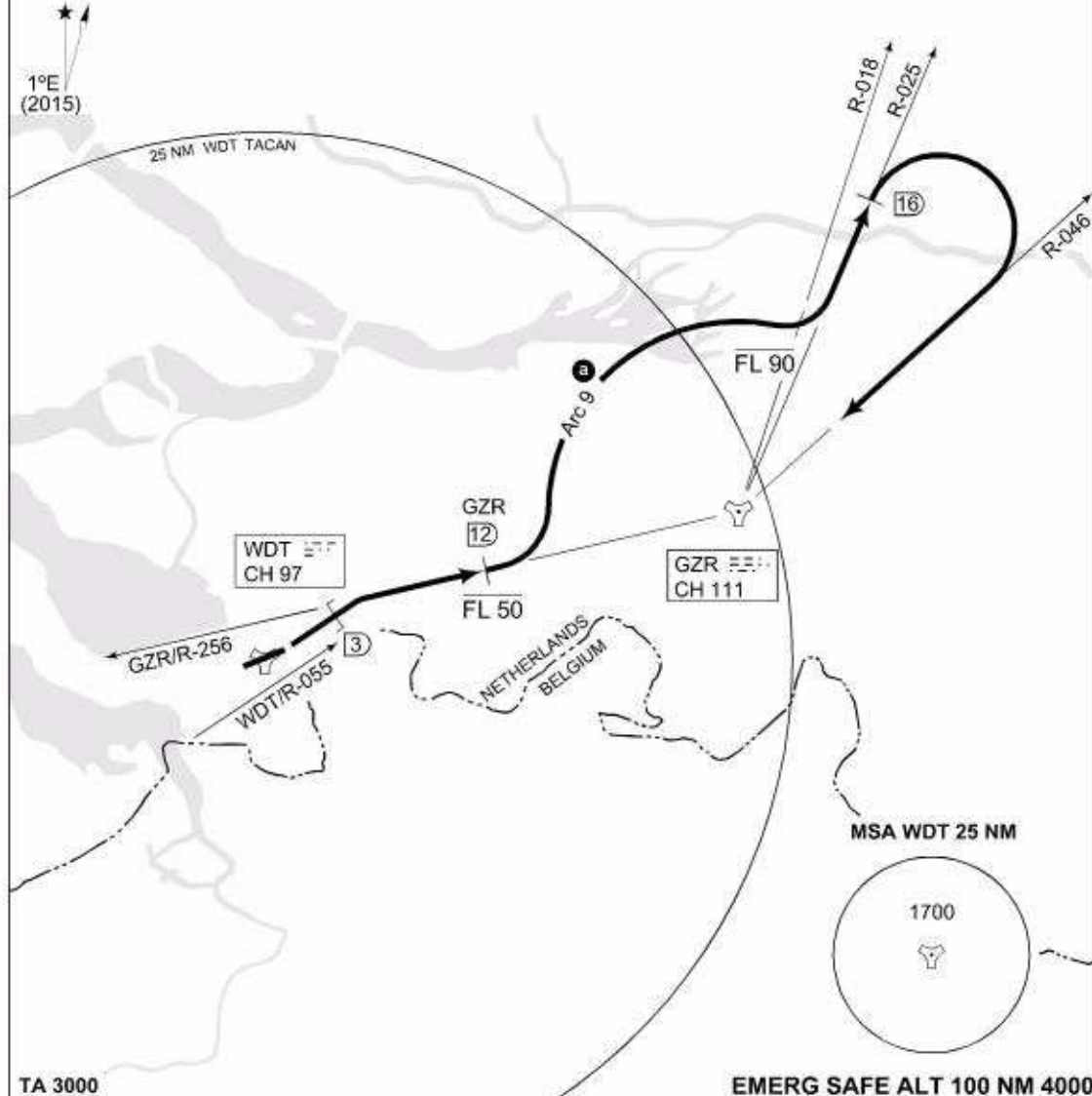
CHANGES: VAR

RNLAF 03 MAR 2016

**MIPS INSTRUMENT DEPARTURE CHART** **WO3 WOENS DRECHT (EHWO)**

WOENS DRECHT TWR 339.000 120.430	RAPCON WEST 281.475 123.580	DUTCH MIL 264.325 132.350	GND CTL 283.125 121.680
-------------------------------------	--------------------------------	------------------------------	----------------------------

**NOTE:**  
 ③ WHEN IN ARC 9, DO NOT EXCEED 10 DME



TA 3000 EMERG SAFE ALT 100 NM 4000

**WOENS DRECHT 3 (RWY 07)**

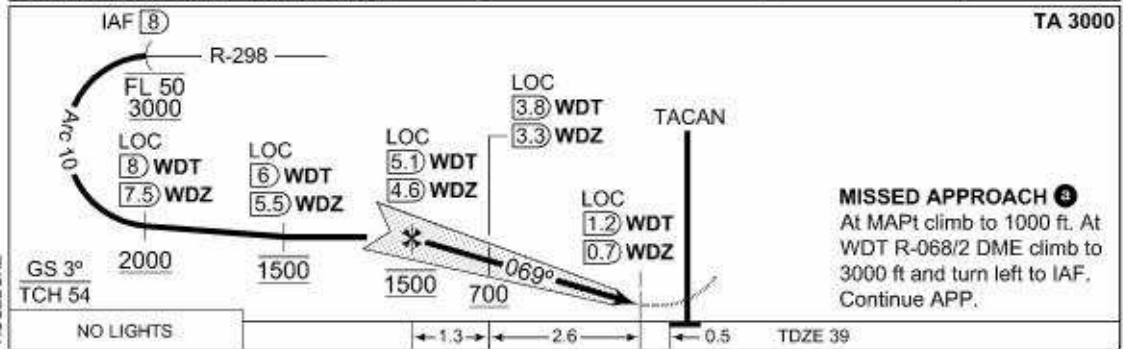
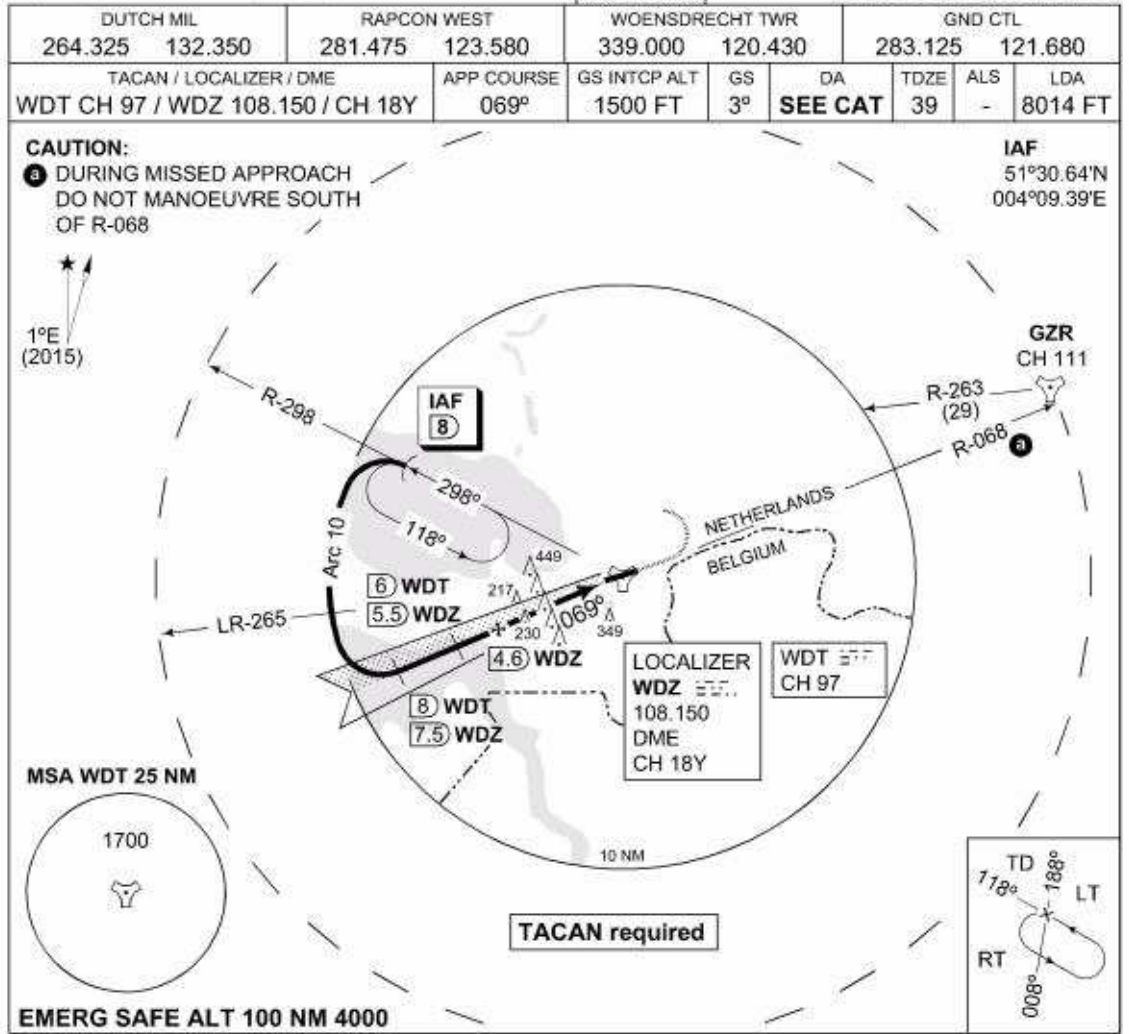
- At 0.9 DME turn left to intercept WDT R-055 outbound to intercept GZR R-256 inbound.
- Level off at FL 50.
- At GZR R-256/12 DME turn left to intercept Arc 9, climb to FL 90. ③
- When passing GZR R-018 continue climb, intercept GZR R-025 outbound.
- At 16 DME turn right to intercept R-046 inbound.

**NOTE:** Departure will be controlled by Rapcon West.

CHANGES: VAR

PNLAF 03 MAR 2016

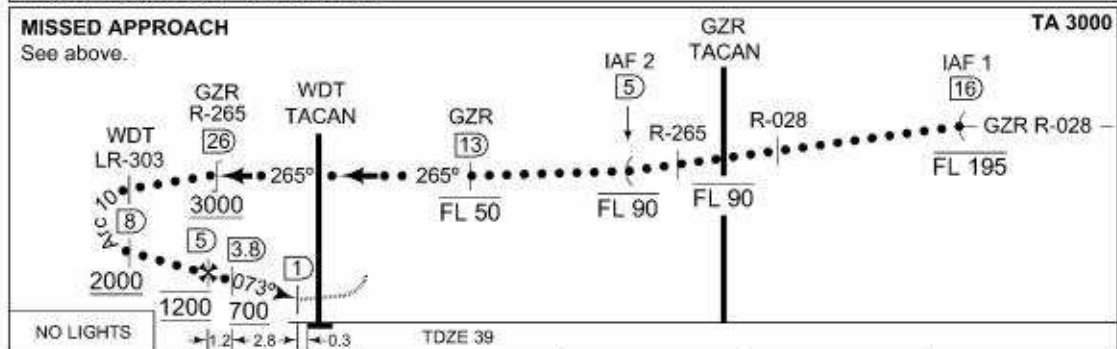
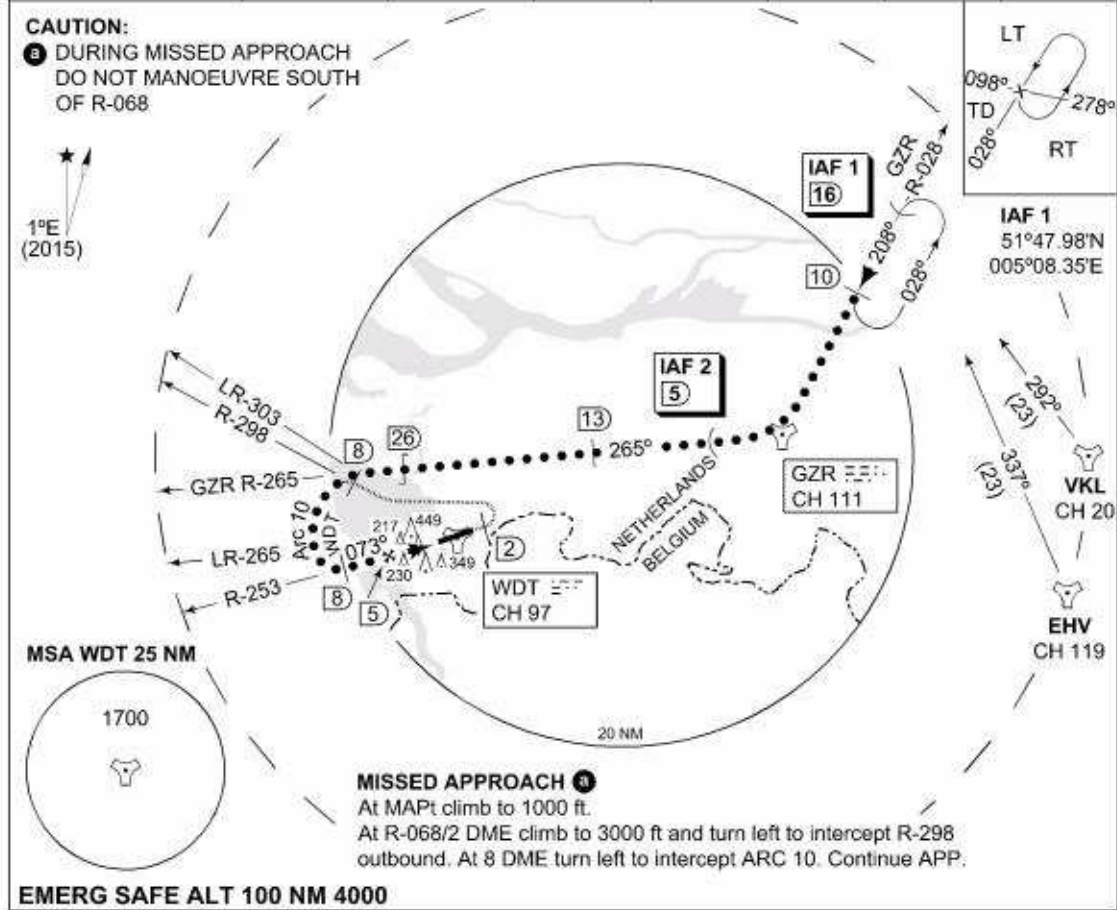
**MIPS INSTRUMENT APPROACH CHART** **ILS or LOC RWY 07 WOENSDRECHT (EHWO)**



CATEGORY	A	B	C	D	E
S-ILS 07	<b>239</b> -1200 200 (200-1.2)	<b>246</b> -1600 207 (300-1.6)	<b>256</b> -1600 217 (300-1.6)	<b>266</b> -1600 227 (300-1.6)	N.A.
S-LOC 07	<b>480</b> -1600 441 (500-1.6)		<b>480</b> -2000 441 (500-2.0)	<b>480</b> -2400 441 (500-2.4)	N.A.

**MIPS INSTRUMENT APPROACH CHART** **HI-TACAN RWY 07 WOENS DreCHT (EHWO)**

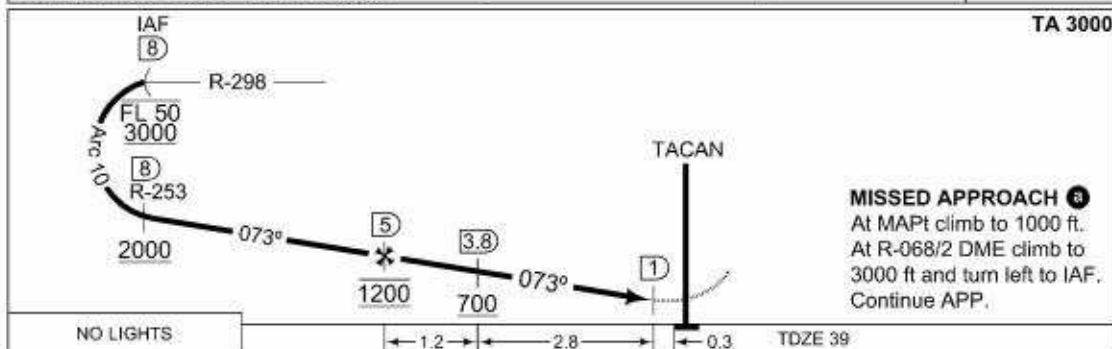
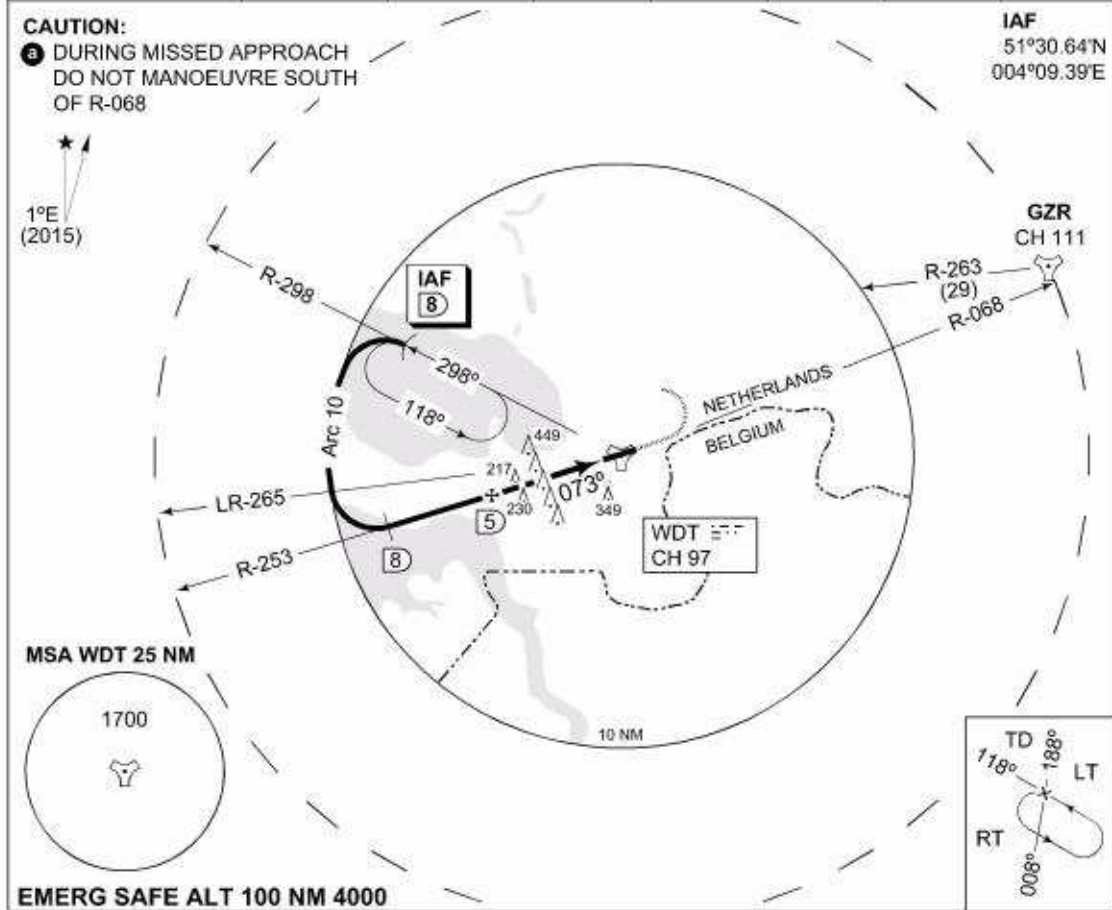
DUTCH MIL 264.325 132.350		RAPCON WEST 281.475 123.580		WOENS DreCHT TWR 339.000 120.430		GND CTL 283.125 121.680	
TACAN WDT CH 97		APP COURSE 073°	FAF ALT 1200 FT	Descent GR	MDA 600	TDZE 39	LDA 8014 FT



CATEGORY	A	B	C	D	E
S-TACAN 07	600 -1600 561 (600-1.6)	600 -2400 561 (600-2.4)	600 -2800 561 (600-2.8)	600 -3200 561 (600-3.2)	
CIRCLING	NOT AUTHORIZED				

**MIPS INSTRUMENT APPROACH CHART** AD ELEV 63 **TACAN RWY 07 WOENS DreCHT (EHWO)**

DUTCH MIL 264.325 132.350		RAPCON WEST 281.475 123.580		WOENS DreCHT TWR 339.000 120.430		GND CTL 283.125 121.680	
TACAN WDT CH 97	APP COURSE 073°	FAF ALT 1200 FT	Descent GR	MDA 600	TDZE	ALS -	LDA 8014 FT

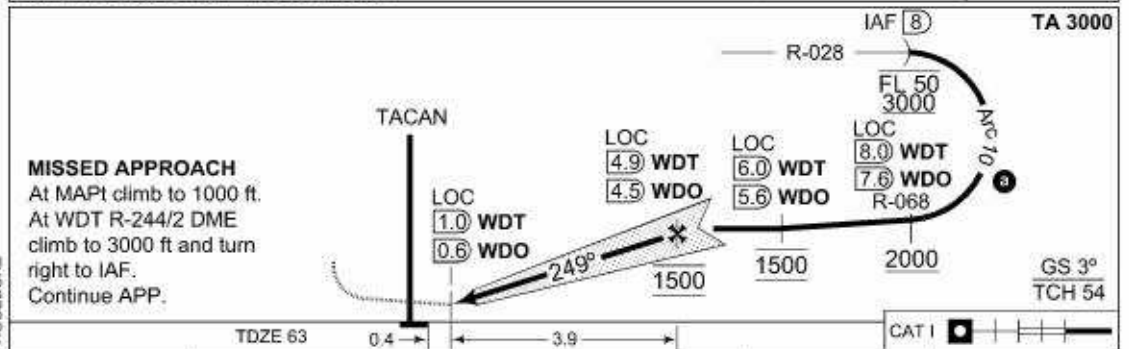
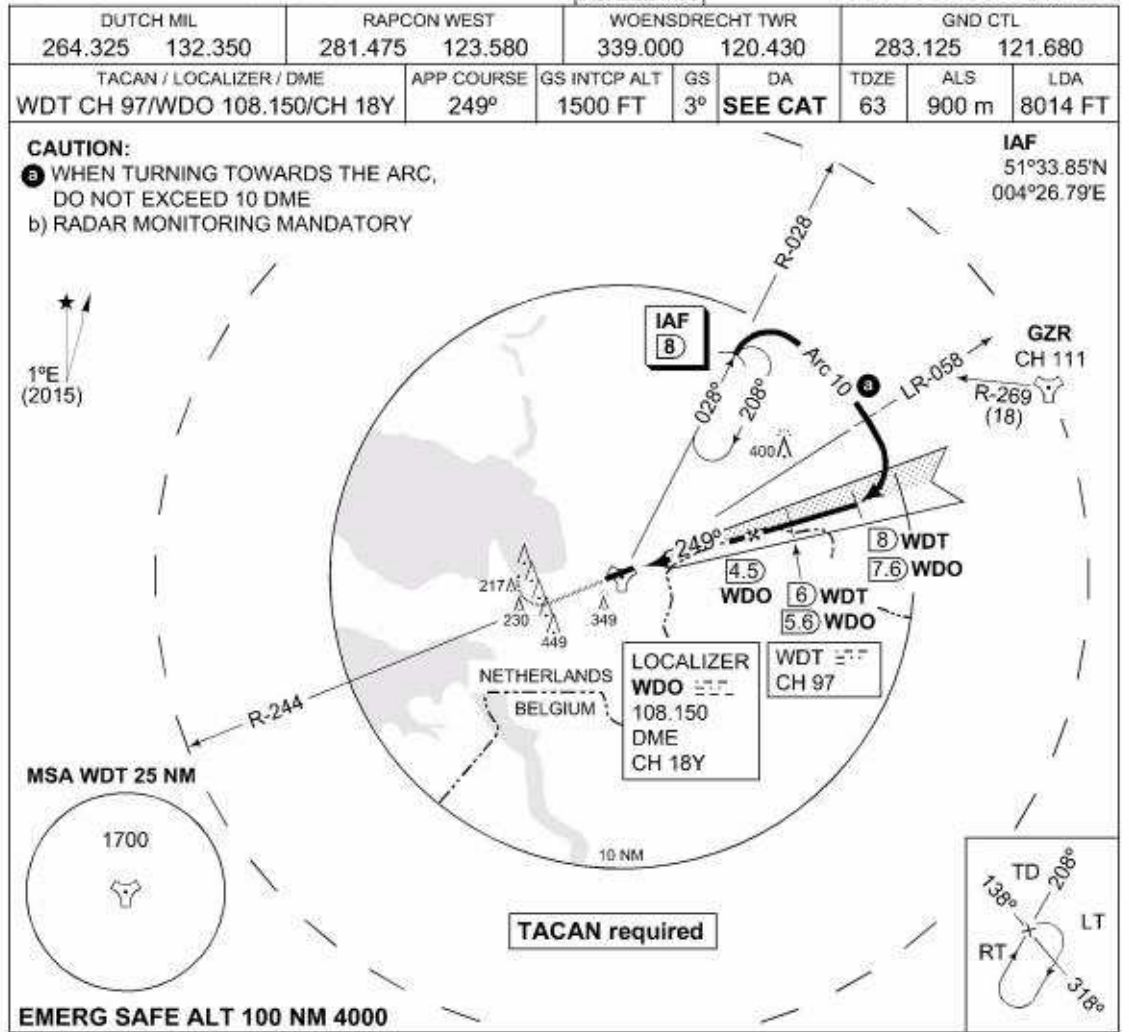


	NO LIGHTS				TDZE 39
CATEGORY	A	B	C	D	E
S-TACAN 07	<b>600</b> -1600 561 (600-1.6)	<b>600</b> -2400 561 (600-2.4)	<b>600</b> -2800 561 (600-2.8)	<b>600</b> -3200 561 (600-3.2)	
CIRCLING	NOT AUTHORIZED				

CHANGES: VAR MIPS

RNLAF 03 MAR 2016

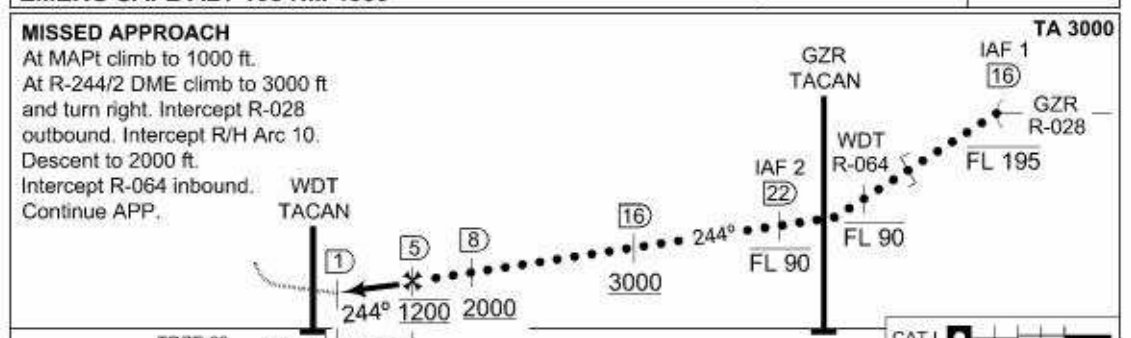
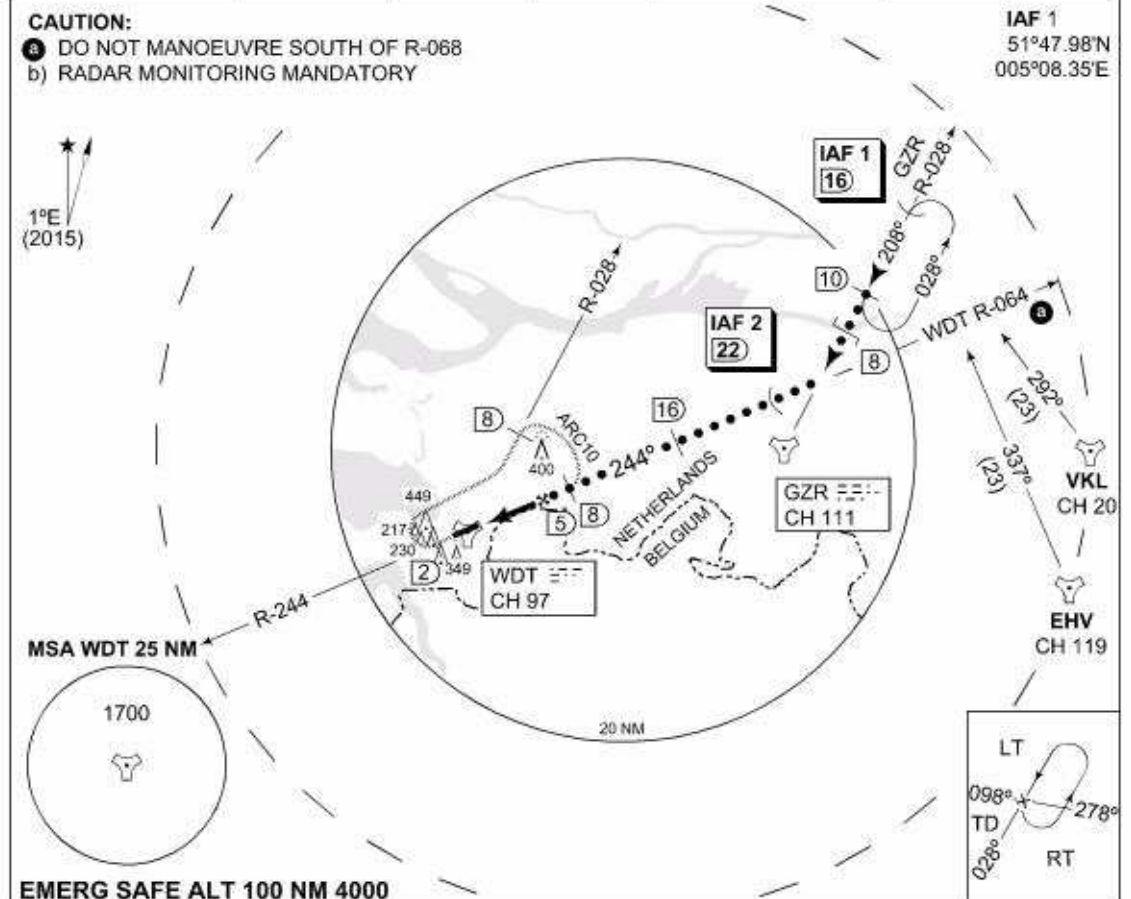
**MIPS INSTRUMENT APPROACH CHART** **ILS or LOC RWY 25 WOENSDRECHT (EHWO)**



CATEGORY	A	B	C	D	E
S-ILS 25		<b>263</b> -800 200 (200-0.8)		<b>268</b> -800 205 (300-0.8)	N.A.
S-LOC 25		<b>440</b> -800 377 (400-0.8)		<b>440</b> -1200 377 (400-1.2)	N.A.

**MIPS INSTRUMENT APPROACH CHART** **HI-TACAN RWY 25 WOENS DRECHT (EHWO)**

DUTCH MIL 264.325 132.350		RAPCON WEST 281.475 123.580		WOENS DRECHT TWR 339.000 120.430		GND CTL 283.125 121.680	
TACAN WDT CH 97	APP COURSE 244°	FAF ALT 1200 FT	Descent GR	MDA 440	TDZE 63	ALS 900 m	LDA 8014 FT



CATEGORY	A	B	C	D	E
S-TACAN 25	<b>440 -800 377 (400-0.8)</b>			<b>440 -1200 377 (400-1.2)</b>	
CIRCLING	NOT AUTHORIZED				



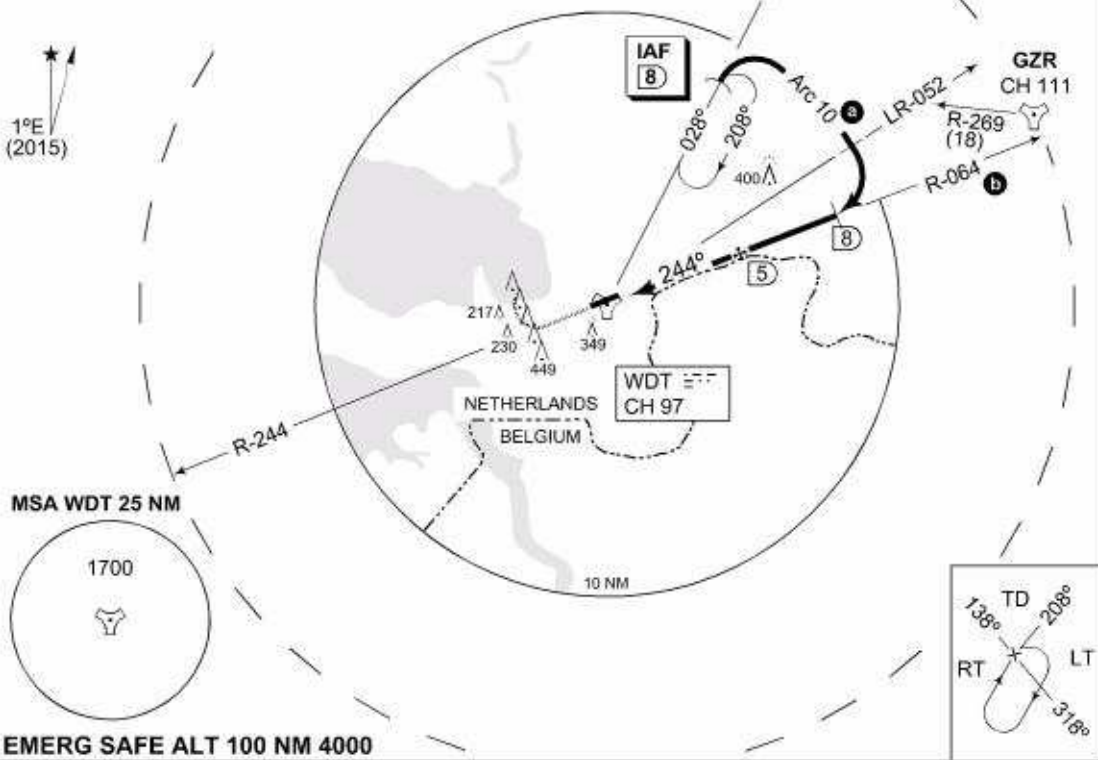
**MIPS INSTRUMENT APPROACH CHART** **TACAN RWY 25 WOENS DreCHT (EHWO)**

DUTCH MIL 264.325 132.350		RAPCON WEST 281.475 123.580		WOENS DreCHT TWR 339.000 120.430		GND CTL 283.125 121.680	
TACAN WDT CH 97	APP COURSE 244°	FAF ALT 1200 FT	Descent GR	MDA 440	TDZE 63	ALS 900 m	LDA 8014 FT

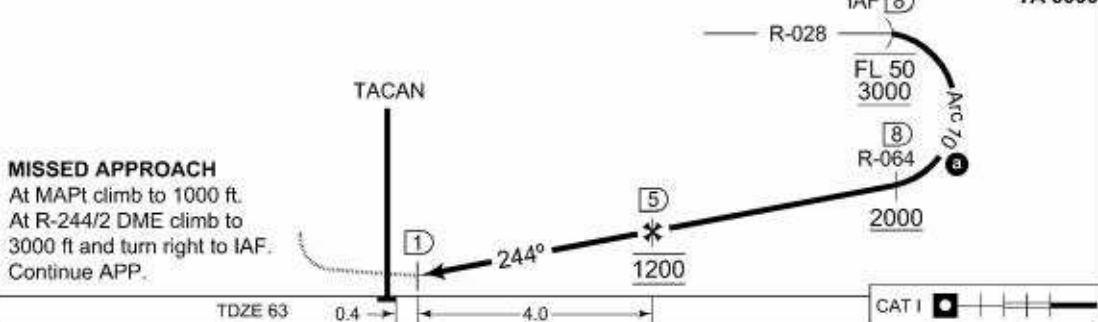
**CAUTION:**

- a) WHEN TURNING TOWARDS THE ARC, DO NOT EXCEED 10 DME
- b) DO NOT MANOEUVRE SOUTH OF R-068
- c) RADAR MONITORING MANDATORY

**IAF**  
51°33.85'N  
005°26.79'E



**EMERG SAFE ALT 100 NM 4000**



CHANGES: VAR MIPS	CATEGORY	A	B	C	D	E
	S-TACAN 25	440 -800 377 (400-0.8)			440 -1200 377 (400-1.2)	
CIRCLING	NOT AUTHORIZED					



**INTENTIONALLY LEFT BLANK**